

Tools to Create Healthy Communities

Healthy communities are healthy and sustainable places built on a balanced foundation of “people-prosperity-planet”. This *evidence-based toolbox* (www.tpchd.org/HealthyCommunityPlanningToolbox) will assist cities and towns create healthy communities by integrating health into their long-range planning.

Organization of the Toolbox

Contains two types of tools: *process tools* and *policy tools*. You can cater these to your unique community needs, aspirations, health priorities, disparities and existing resources.

Planning Process Tools are designed to help you define your approach and scope of work, incorporate community health priorities and aspirations into the vision statement, and consider health during each step of the process. To reverse the health disparities gap, it is crucial to meaningfully engage all segments of the diverse population throughout the planning process. It is particularly important to include your underserved populations (seniors, low-income, minorities, etc.) in making planning decisions affecting their livelihood and health. You can wear a health lens by accessing tools under each of the nine planning tasks:

- Visioning
- Community Assessment and Existing Conditions Update
- Goal Formulation
- Policy Development
- Draft Plan Review
- SEPA Review
- Final Plan Adoption
- Plan Implementation
- Plan Monitoring and Performance Management

Policy Intervention Tools provide sample policies for comprehensive plans and their implementation to achieve healthy community outcomes. You can integrate policies into your comprehensive plan elements of land-use, transportation, housing, natural environment, capital facilities and others to affect the following *six priority or intervention areas*:

- Physical Activity
- Healthy Food
- Safety and Injury
- Placemaking
- Access to Opportunity
- Natural Environment

Toolbox Application: Just a Few Examples

Apply the *Self-assessment Tool to Integrate Health into Comprehensive Plan Update* to identify gaps and opportunities to address public health in your current comprehensive plan:

www.tpchd.org/files/library/87189ac3d23467ab.pdf

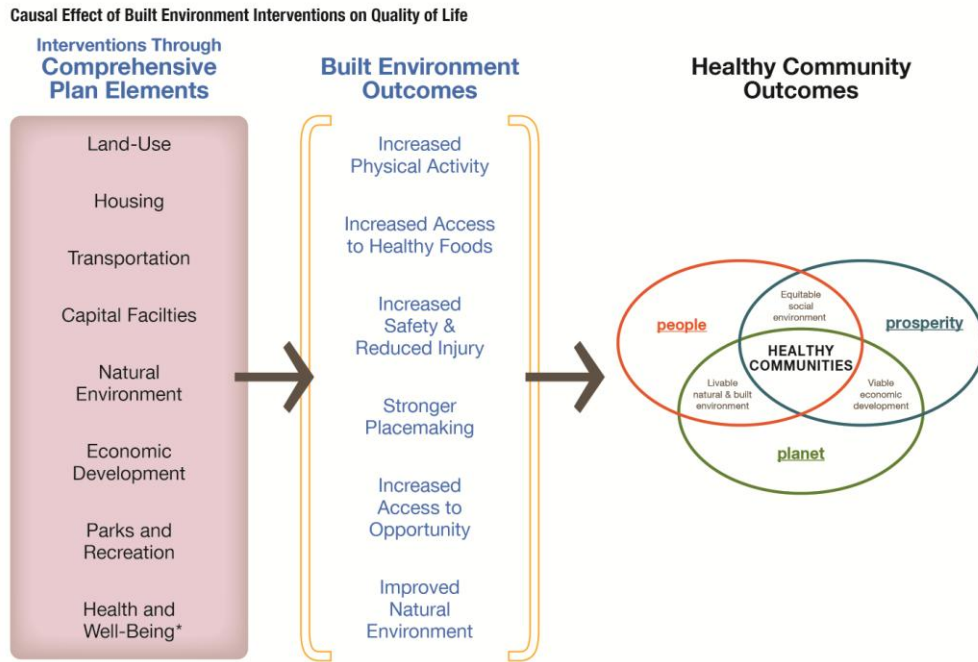
Learn how to *Understand and Identify Underserved Populations* before designing your public participation program: www.tpchd.org/files/library/d30555beb1557e78.pdf

Customize the *Community Health Assessment Questions* to conduct the community-wide needs assessment or visioning sessions: www.tpchd.org/files/library/daa719e3665adf13.pdf

Adapt the *Built Environment Outcome Measures* to drive goals and policies to achieve the city-wide vision: www.tpchd.org/files/library/9f8937e58af92c5d.pdf

Access Policy Tools with the Use of Logic Models

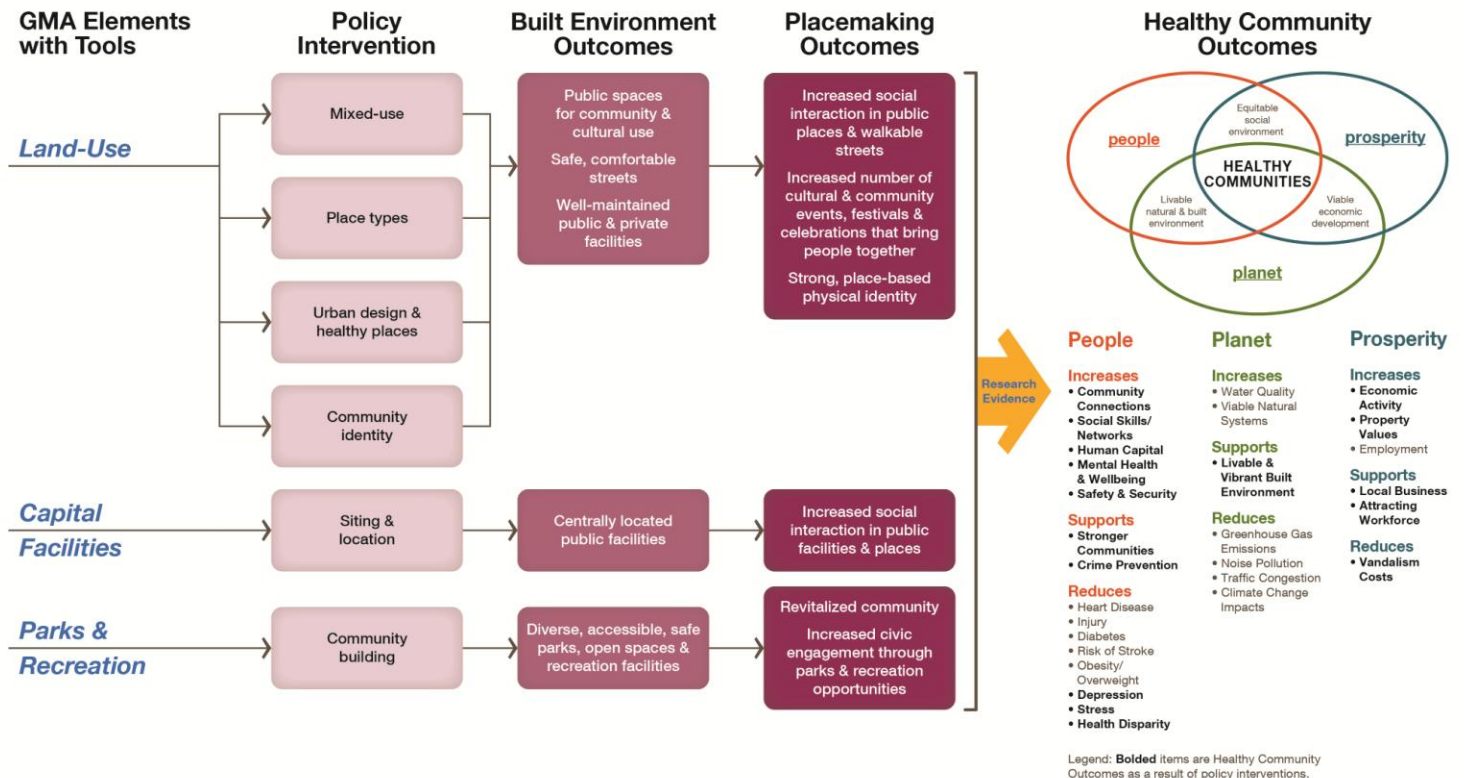
The Introductory Logic Model/Cause and Effect Map—Access built environment outcomes and detailed logic models under each of the six policy intervention areas.



* Integrate health into existing comprehensive plan elements or as a separate element

A Sample of the Six Detailed Logic Models—Access policy tools to create a sense of place under various GMA elements.

PLACEMAKING



Contact Information: Amy Pow, MCIP • Built Environment Liaison • Email apow@tpchd.org • Phone (253) 798-6456