



Think Global, Act Local: Best Practices of School Nursing Around the World

Erin D. Maughan PhD, MS, RN, APHN-BC
Director of Research



National Association of School Nurses

Objectives

- ▶ By the end of the session, participants will be able to:
 - Articulate similarities and differences in models of school nursing practiced around the world.



<http://www.town.ledyard.ct.us/index.aspx?nid=172>

Children Around World

- ▶ Nearly 235 million children in the world suffer from asthma.
- ▶ Over 155 million children are considered obese (tripled in 20 years)
- ▶ Leading cause of death of children less than 5 years include pneumonia, diarrhea, malnutrition, and malaria



World Health Organization

http://www.who.int/school_youth_health/en/



Method

- ▶ Systematic review of the literature (2007, English)
- ▶ A secondary analysis of OECD health data
- ▶ Key informant interviews



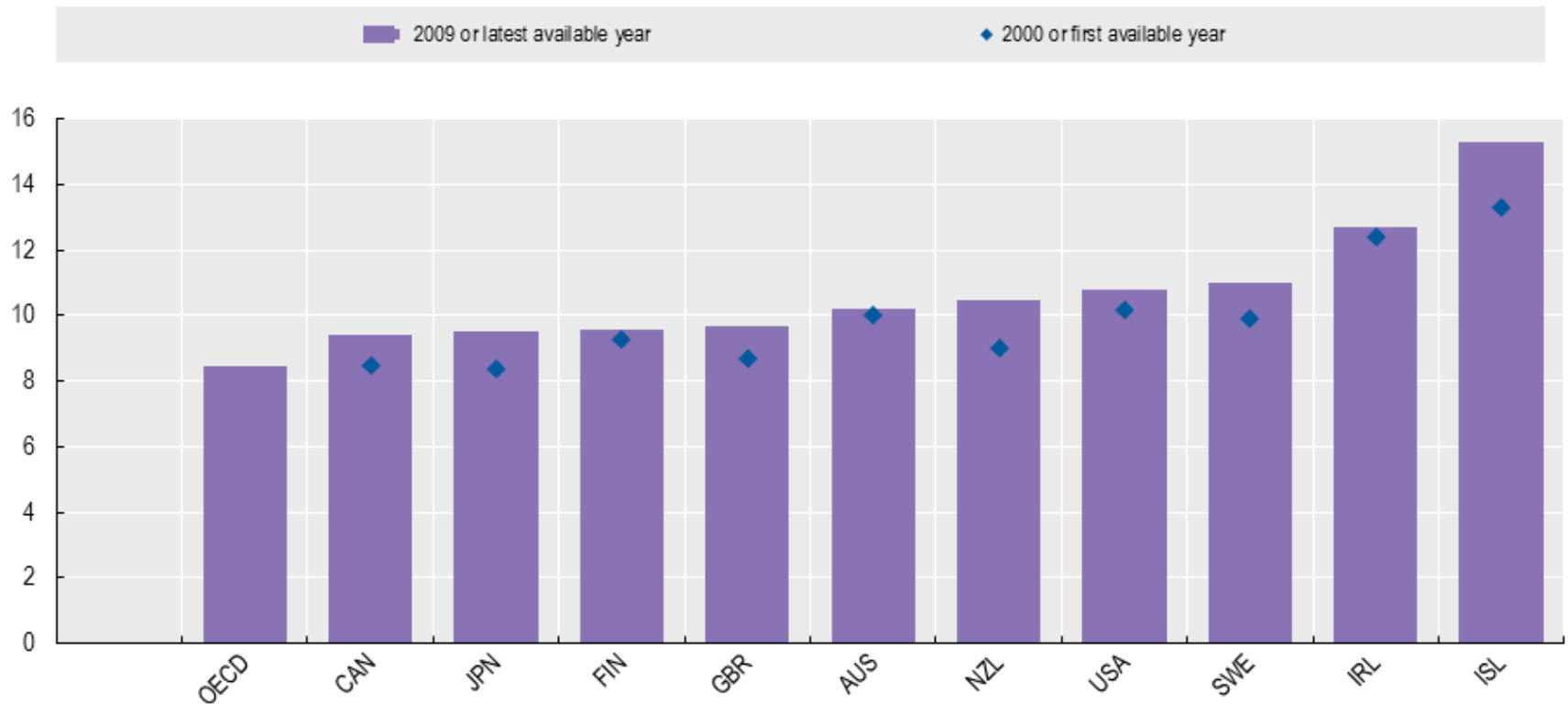
<https://www.coursera.org/course/publichealth>

Results

- ▶ 10 articles
- ▶ 4 government/white papers
- ▶ 4 Key Informant Interviews
 - Many more 'informal interviews'



OECD Data: Nurses Per Population



Nurse to Physician Ratio

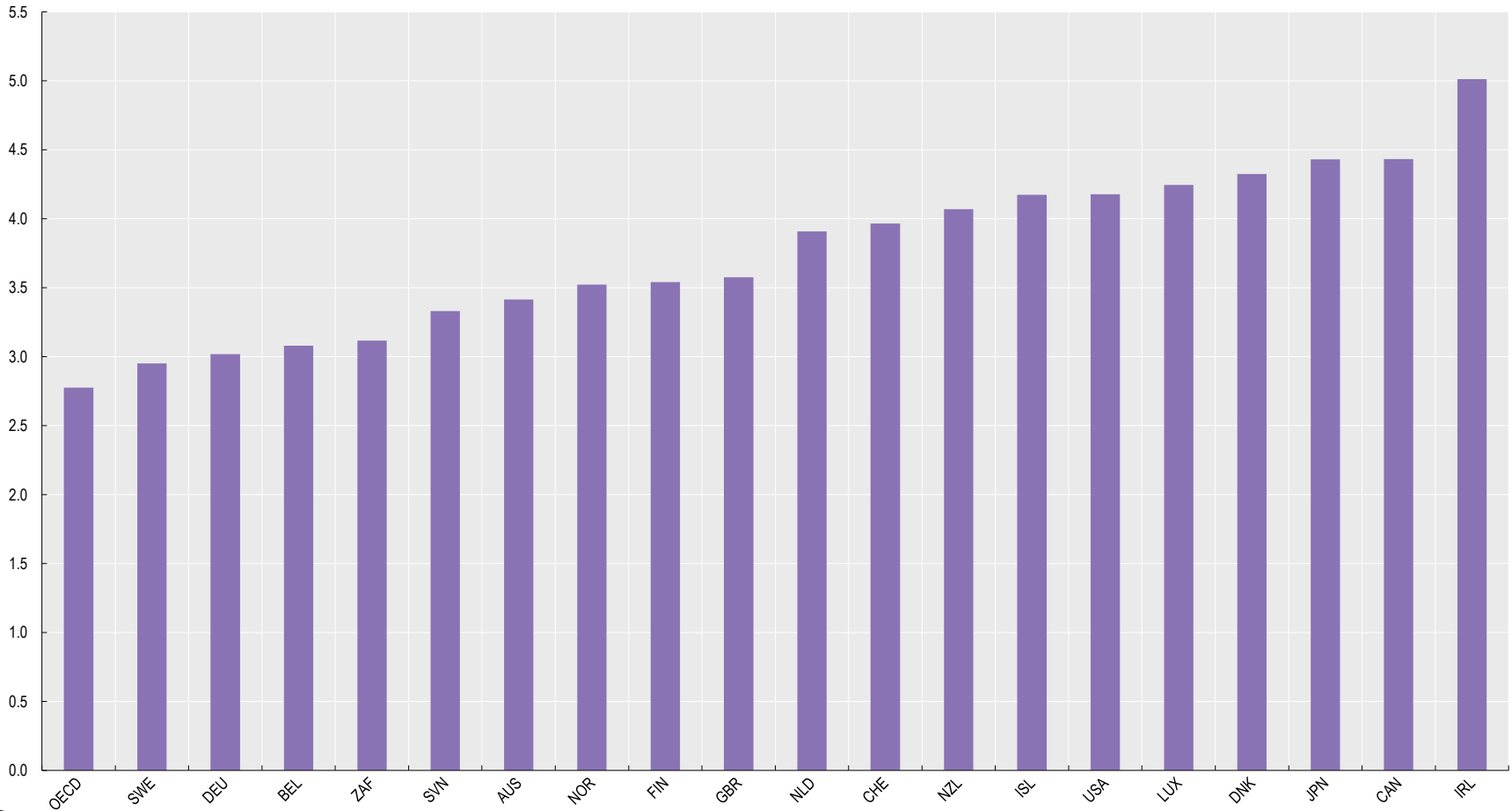


Table 2.1. Comparative policy-focused child well-being in 30 OECD countries

1 ranks the best performing country

	Material well-being	Housing and environment	Educational well-being	Health and safety	Risk behaviours	Quality of school life
Australia	15	2	6	15	17	n.a.
Austria	5	9	18	27	27	11
Belgium	11	11	20	26	13	19
Canada	14	n.a.	3	22	10	16
Czech Republic	18	24	19	5	23	17
Denmark	2	6	7	4	21	8
Finland	4	7	1	6	26	18
France	10	10	23	19	12	22
Germany	16	18	15	9	18	9
Greece	26	19	27	23	7	24
Hungary	20	21	12	11	25	7
Iceland	8	4	14	2	8	1
Ireland	17	5	5	25	19	10
Italy	19	23	28	17	11	20
Japan	22	16	11	13	2	n.a.
Korea	13	n.a.	2	10	2	n.a.
Luxembourg	3	8	17	7	14	23
Mexico	29	26	29	28	30	n.a.
Netherlands	9	17	4	8	9	3
New Zealand	21	14	13	29	24	n.a.
Norway	1	1	16	16	4	2
Poland	28	22	8	14	20	15
Portugal	25	20	26	18	6	21
Slovak Republic	27	25	24	1	22	25
Spain	24	13	21	12	16	6
Sweden	6	3	9	3	1	5
Switzerland	7	n.a.	10	21	5	13
Turkey	30	n.a.	30	30	29	12
United Kingdom	12	15	22	20	28	4
United States	23	12	25	24	15	14

Results

- ▶ Employed by health or education.
- ▶ Roles varied
- ▶ Health promotion and chronic disease management.
- ▶ Screening



Results, cont.

- ▶ Many roles changing (health reform)
- ▶ Health Disparities and Social Determinants a key function.
- ▶ Budgets impacting numbers of school nurses. Need to show cost effectiveness and impact.



Scotland

- ▶ Structure of Children's health
 - Home Visitors, 0–5 years
 - District Nurse



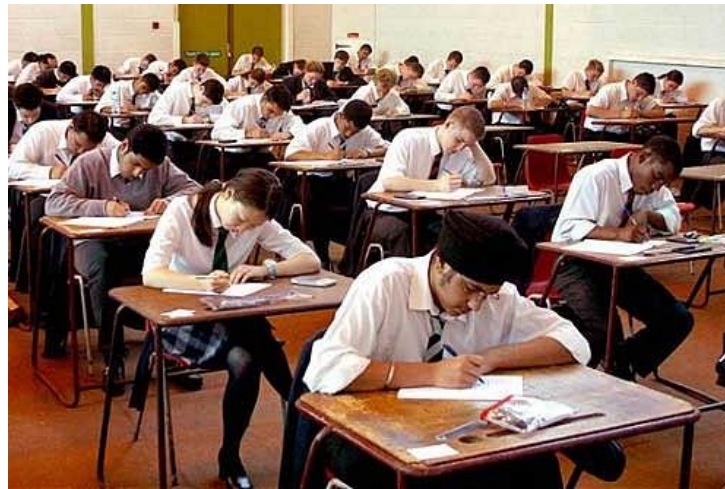
Coordination of Agencies

- ▶ Budget Cuts=New Model of Care
 - Coordinated forms: police, school and health
 - 0–5 years Home Visitors
 - District Nurse–Chronic Disease Specialist
 - Teacher’s responsibilities



Care Coordination

“In the new health and care system, every organisation needs to demonstrate how it can best contribute to people’s health and wellbeing at every stage of life.”



US Care Coordination



RN Case Manager Antonelli, Stille, and Antonelli (2008)

- ▶ 81% reduction in ER visits
- ▶ 63% reduction in medical office visits

School Nurse Case Manager (Moricca, et al., 2013)

- ▶ Decreased absences due to illness

Public Health Impact

- ▶ **School Savings** (SAMHSA, 2010)
 - \$US 4.5 million –for children not repeating grades
- ▶ **Return on Investment** (return per \$US1 spent)
 - Prevention: \$5.60
 - Depression: \$7.00
 - Substance abuse \$4.00–\$7.00
 - Immunizations: \$9.9 million direct care
 - School Nursing: \$2.20 (low estimate)



Limitations

- ▶ English only
- ▶ Not representative of each country
- ▶ Hard to compare some aspects of data
- ▶ Limited information (need for data!)



Future Work Needed

- ▶ International School Nurse Survey
 - English
- ▶ Identification of key outcomes/indicators
- ▶ Visibility



School Nurses: Eyes & Ears

“Each affects the other and the other affects the next, and the world are full of stories, but the stories are all one.”

M. Algom: The Five People You Meet in

Heaven



Questions



<http://www.sfcapc.org>

Selected References

Care Coordination

- <http://www.nursingworld.org/carecoordinationwhitepaper> (Antonelli et al reference found in report)
- Moricca, M. L., et al (2013). School asthma screening and case management: attendance and learning outcomes. *JOSN*, 29(2), 104-112. doi: 10.1177/1059840512452668

Budget

- <http://costofvision.preventblindness.org/costs/direct-costs/school-screening-cost>

Return on Investment

- <http://healthyamericans.org/reports/prevention08/Prevention08Exec.pdf>
- http://www.nphw.org/assets/general/uploads/APHA-NPHW2013_Sec_ONE_4b_noTOC.PDF

- SAMHSA, (2010). *Working together to help youth thrive*.
- OECD: <http://www.oecd.org/social/family/43570328.pdf>