

*Inter-Cultural Collaboration
for Health Promotion Among Gay Latino Immigrants*



Lo Que Soy: Experiencias de Los Gay Inmigrantes

LGBT Health Caucus
APHA Annual Meeting, Washington, DC
November 2007

Brad A. Vanderbilt, MPH

Learning Objectives

Identify three methods for conducting community-based needs assessments.

Recognize three key challenges to community-based, participatory health promotion projects in inter-cultural settings.

Describe four opportunities to enhance individual/community strengths through intercultural collaboration.

Problem Statement

Gay Latino immigrants face significant challenges related ***racism and homophobia*** which pose important ***contextual factors*** that seriously impact individual and ***community health*** among gay Latino immigrants, and contribute to significant ***health disparities***.

Three Big Ideas

Challenges/opportunities in **community-participatory** health education.

Challenges/opportunities in **cross-cultural** health education.

Social/contextual factors influencing individual/community health, and the impact of community engagement on health.



Risk as a Contextual Factor

Oppressive Social Factors (homophobia, racism, etc.)

Psychological Impact of Oppression.
(shame, depression, low self-esteem)

High Risk Situations
(unequal power dynamics, substance use)

Risk Behaviors

Diaz R., Ayala G., Culture, Health & Sexuality, 1999, VOL. 1, NO. 3, 277- 293

Resilience Factors

- Family Acceptance
- Gay Role Model in Childhood
- Social & Sexual Satisfaction
- Social/Political Network and Activism

Resilience Factors in *Lo Que Soy* film project

- ✓ *Space to Acknowledge Challenges*
- ✓ *Space to Celebrate Strengths*
- ✓ *Enhanced Social Support/Networks*
- ✓ *Positive Contribution to the Community*

Diaz R., Ayala G., Culture, Health & Sexuality, 1999, VOL. 1, NO. 3, 277- 293

Methods

Community-Based Health Assessment

- Key Informants
- Survey Outreach
- Group Interview
- Community Advisory Board



 **Filmmaking
Evaluation**

 **Distribution**



Findings, Pt. 1



Top Suggested Themes from Community Surveys (n=130)

HIV/AIDS

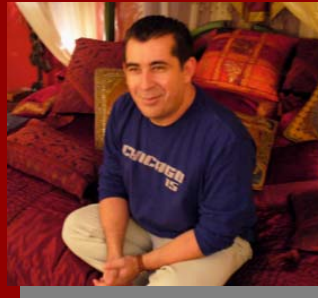
Alcohol/Drugs

Family Ties

How We Treat Each Other

What's Cool About
Being An Immigrant

Findings, Pt. 2



All respondents reported that the project:

✓ Created Space to Discuss Community Strengths/Challenges

✓ Created Opportunities to Discuss Community Issues with Peers

✓ Provided Positive Personal Experience for the Participant

(n = 9, total surveyed 19)



Challenges in Intercultural CBPH

racism

acculturation issues

poverty

Family

truth telling

health disparities

drama

ethical di

communication

historic inequities

sleep deprivation

trust

grunt work

translation

homophobia

finding volun

heavy lifting

internalized oppression

past trauma

tech issue

awkward moments

“¿Como Se Dice...?”

hurt feelings **STRESS**

coordinating schedules

privilege-owni

rivalries

eurocentrism

burnout

Challenges in Intercultural CBPH

Time

Money

Heart



Opportunities to Strengthen Communities Through Intercultural CBPH

- ✓ **Enhanced Satisfaction with Friendships**
- ✓ **LGBT/Latino Social+Political Engagement**
- ✓ **Re-envisioning Concepts of Family**
- ✓ **All Teachers, All Learners**



Limitations

✓ Effectiveness of film itself not evaluated.



✓ CAB and participants reflect higher levels of education and acculturation.

Final Thoughts...

⌚ Let Go. Have Faith. Breathe.

⌚ Identity and Wholeness

⌚ Small World, Indeed

⌚ Defining Success



Besos+Abrazos



SOMOS CAB Members

**“The Principals” + The April 7th Shoot Team
AGUILAS, GELAAM, Hermanos + ProLatino**

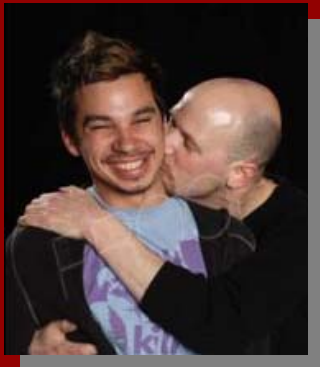


J. Antonio Aguilar Karayianni + Rafael Diaz

Lisa Moore, José Ramon Fernandez-Peña + Rachel Poulin

Raging Stallion Studios, Michael Brandon + Kent Taylor

Garza, Café Flore + the Sisters of Perpetual Indulgence



For more information visit...

www.twentyfive7.org