

Because All Children Are Our Children





-Children with Disabilities
-Early Childhood

-After-School
-Violence Prevention

-Academics
-Youth Development

Because All Children Are Our Children



Results



52,943

children attended summer
and after-school programs



370

funded programs or
agencies in the community



\$90 million

invested in programs in
Miami-Dade County

Because All Children Are Our Children



Our Vision

We see a day when...

Access

Awareness

Change



Because All Children Are Our Children





HealthConnect In Our Community

HealthConnect The Early Years

HealthConnect In Our Schools



What is a Medical Home?

Comprehensive care
from a consistent
provider who knows
the family and keeps
the child's health
records.

<http://www.medicalhomeinfo.org/>



HealthConnect In Our Community

- Identify
- Help
- Guide



Because All Children Are Our Children



HealthConnect In Our Community



STATUS

- \$2.6 million annually
- 6 funded agencies
- 1 mobile HealthConnect on Wheels
- 20 Community Health Workers
- 21 Health Navigators



Overall HealthConnect Results

Short-term / Intermediate

Insured families

Regular primary care

Long-term

Better awareness and education

Decreased use of ER for non-emergent care



Because All Children Are Our Children





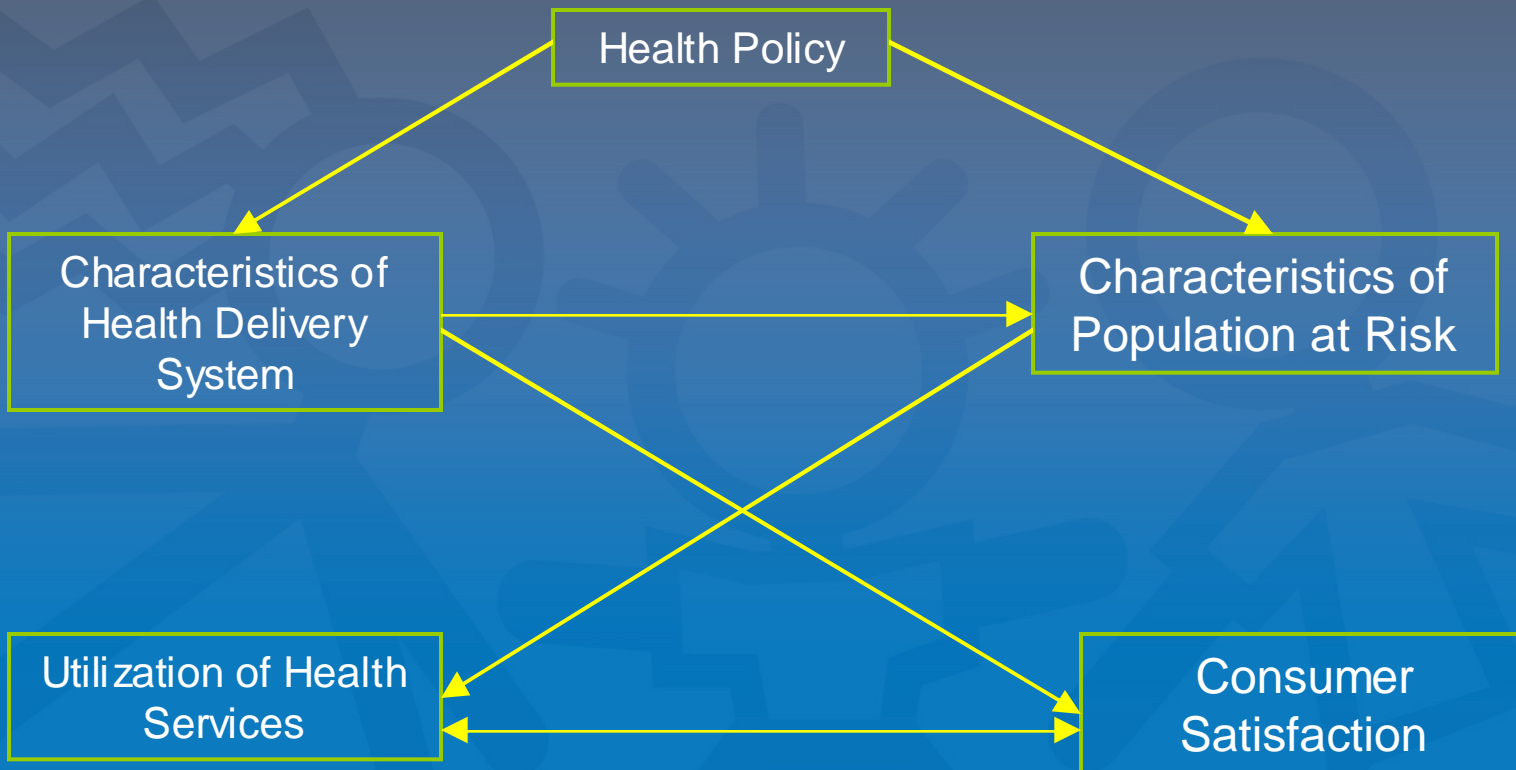
Finding Programmatic Synergy

- Synergy: *The interaction of two or more forces so that their combined effect is greater than the sum of their individual effects.*
- Families don't want programs.
- Families want a seamless system of health care.

Because All Children Are Our Children



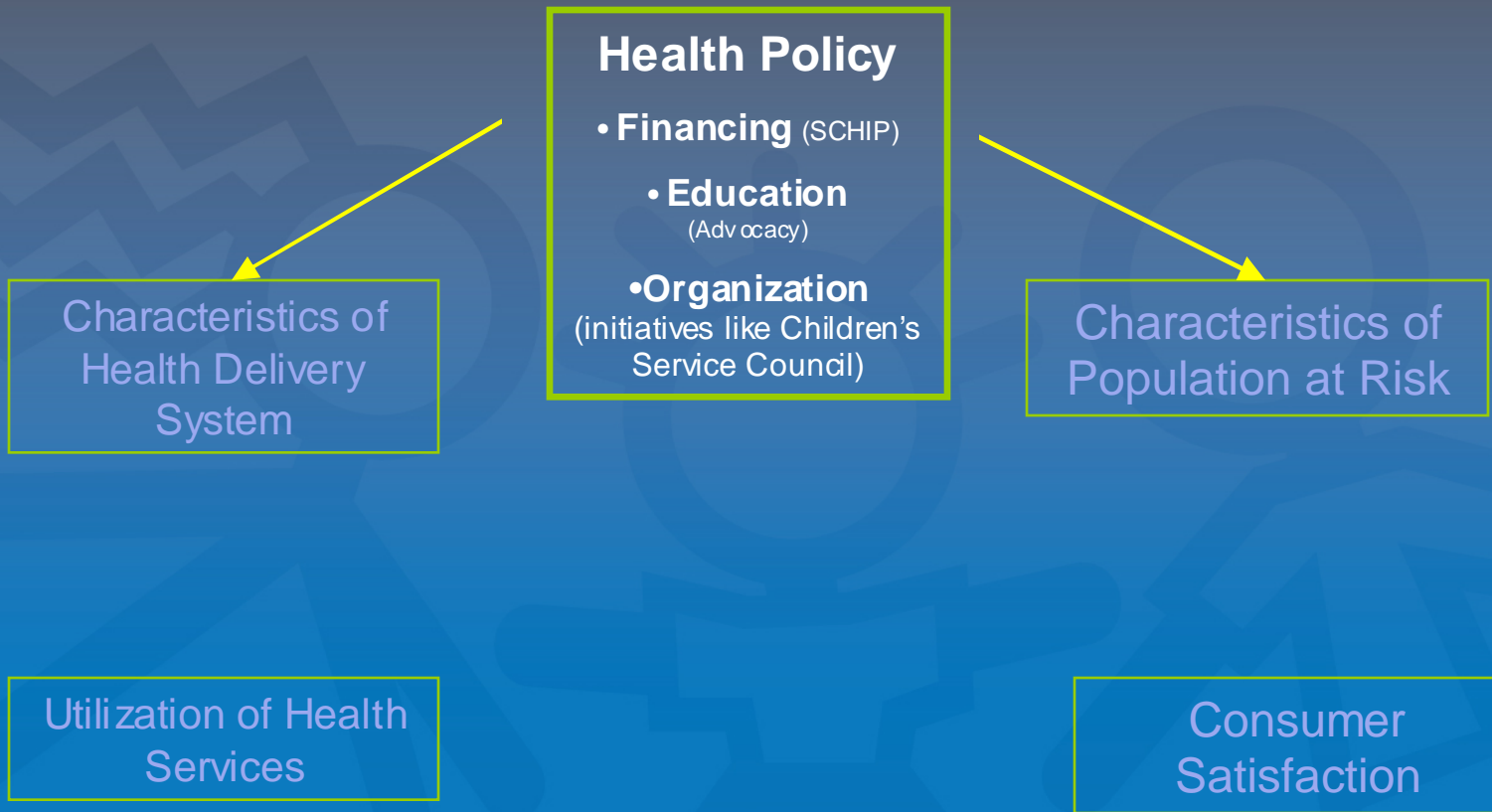
Do our programs fit into an Access to Care Model?



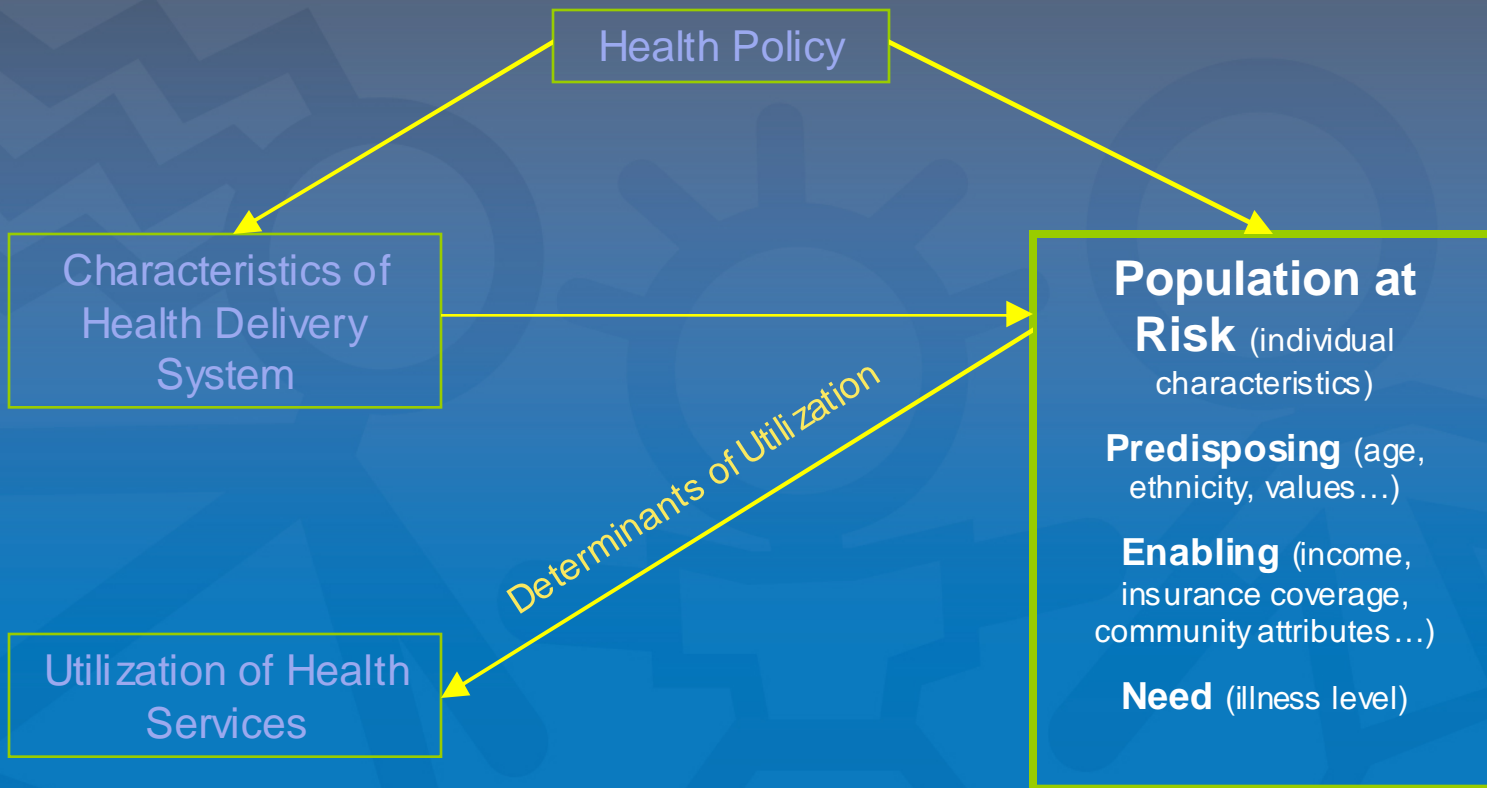
Aday & Andersen, *Health Services Research*, 1974



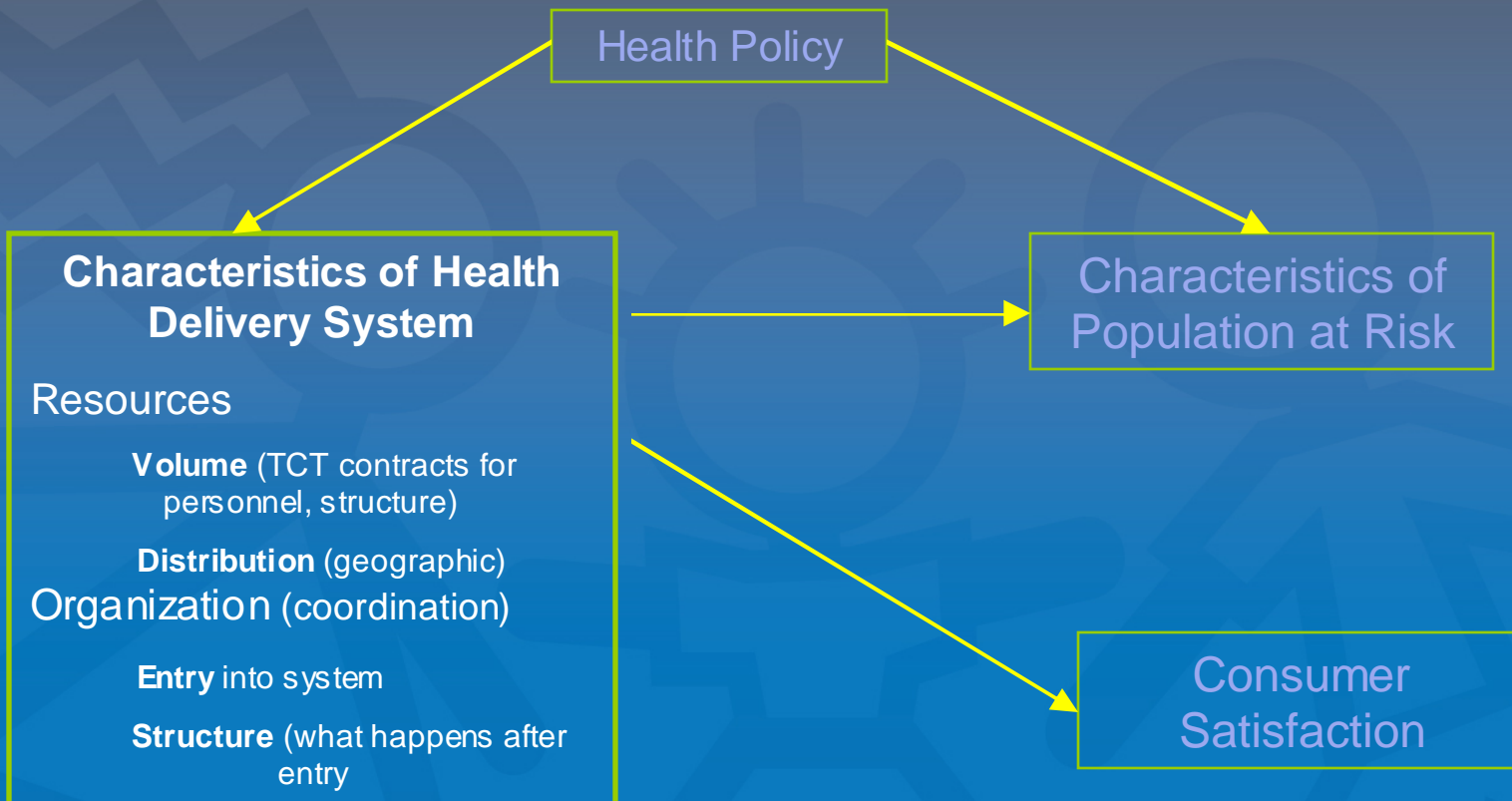
Access to Care Model



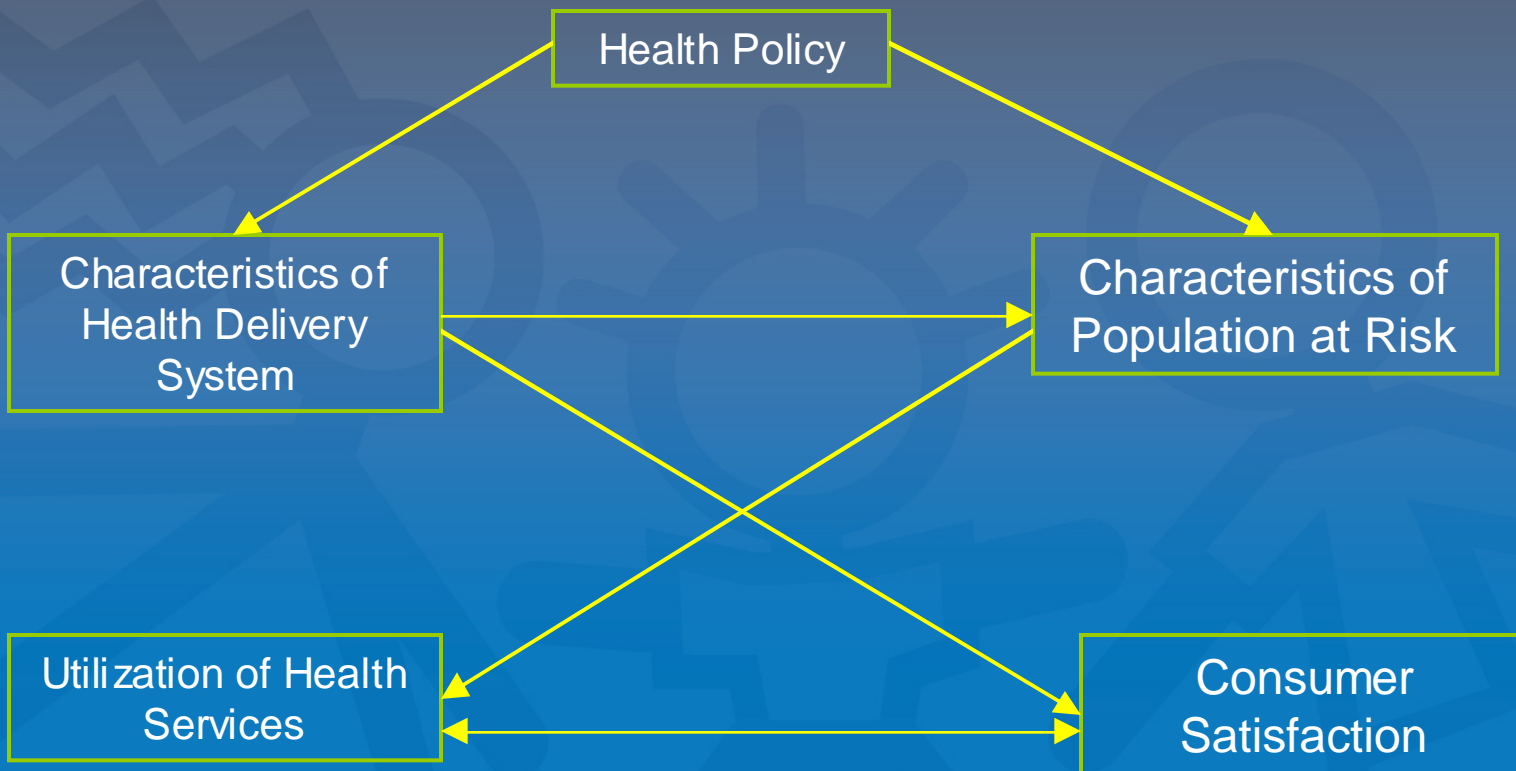
Access to Care Model



Where do our programs fit into an Access to Care Model?



Where do our programs fit into an Access to Care Model?

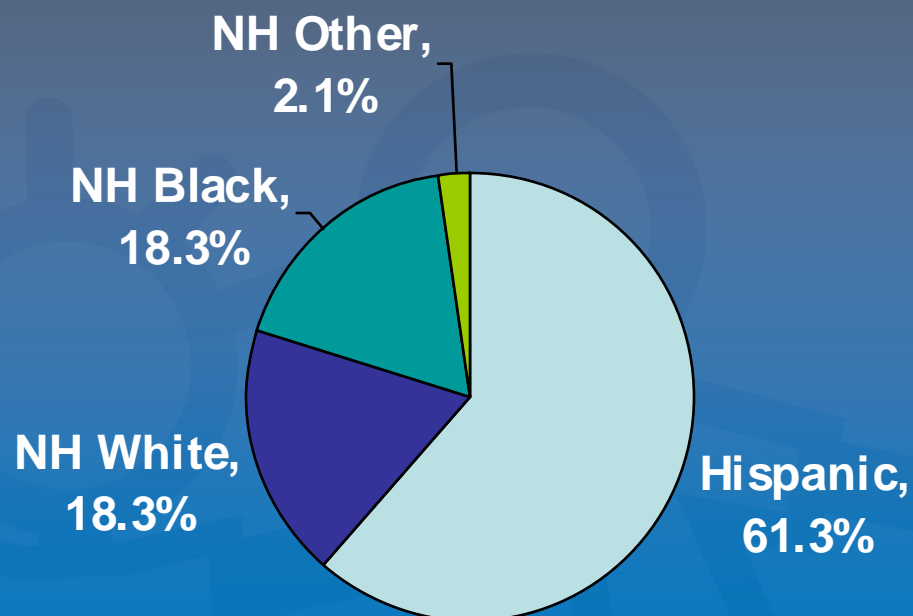


Aday & Andersen, *Health Services Research*, 1974



Miami-Dade County Race & Ethnicity

- Population
2,402,208
- Population <18
24.8%
- HH Income < \$25,000
31.3%



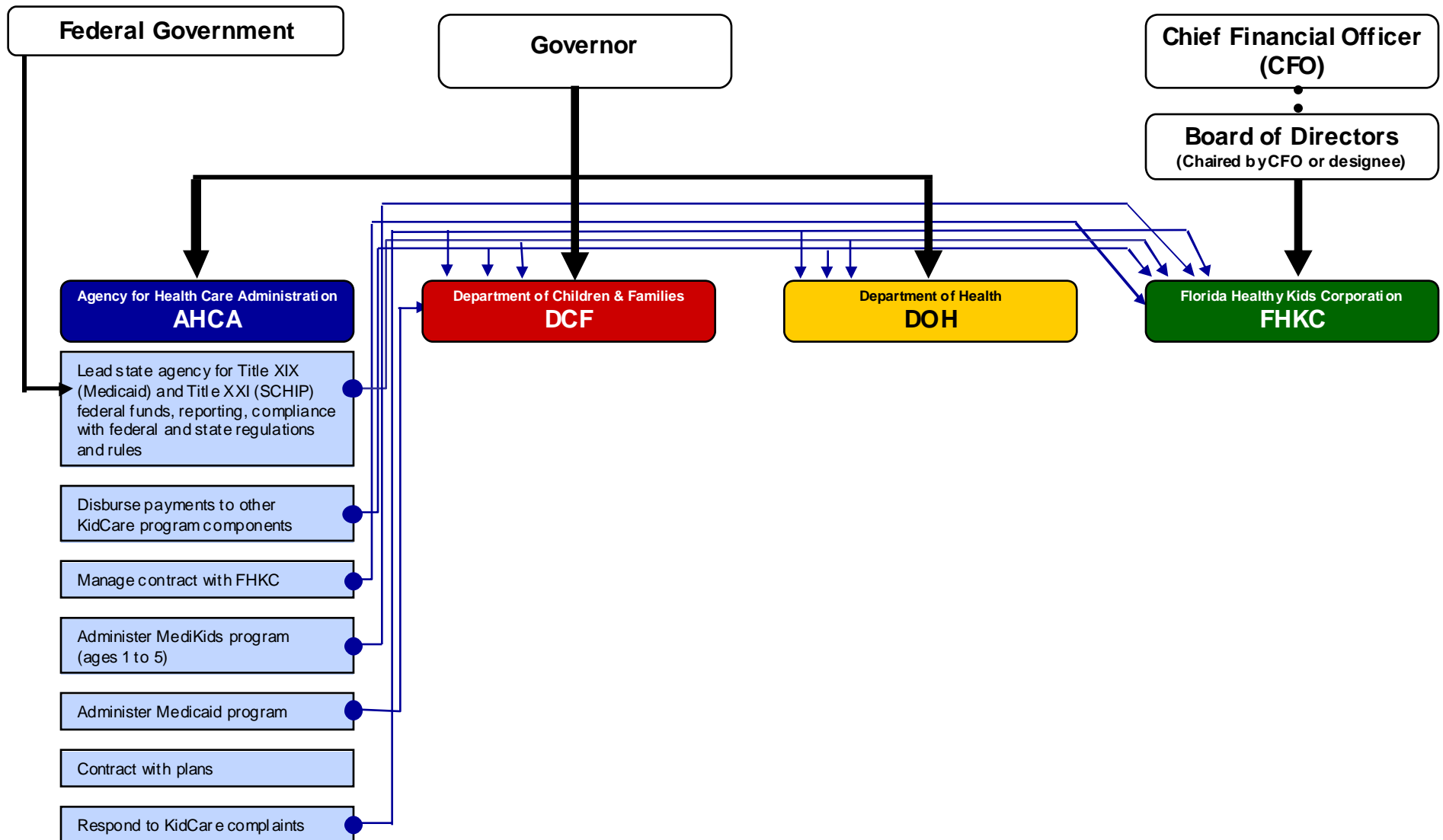
Source: U.S. Census; T4-2006. Hispanic or Latino by Race; Data Set 2006 Population Estimates

FL Kidcare Policy Considerations

- Florida enrollment and outreach experience
- Wait list
- System confusion issues
- Immigrant children
 - Finding them
 - Documenting Them
 - Finding alternatives



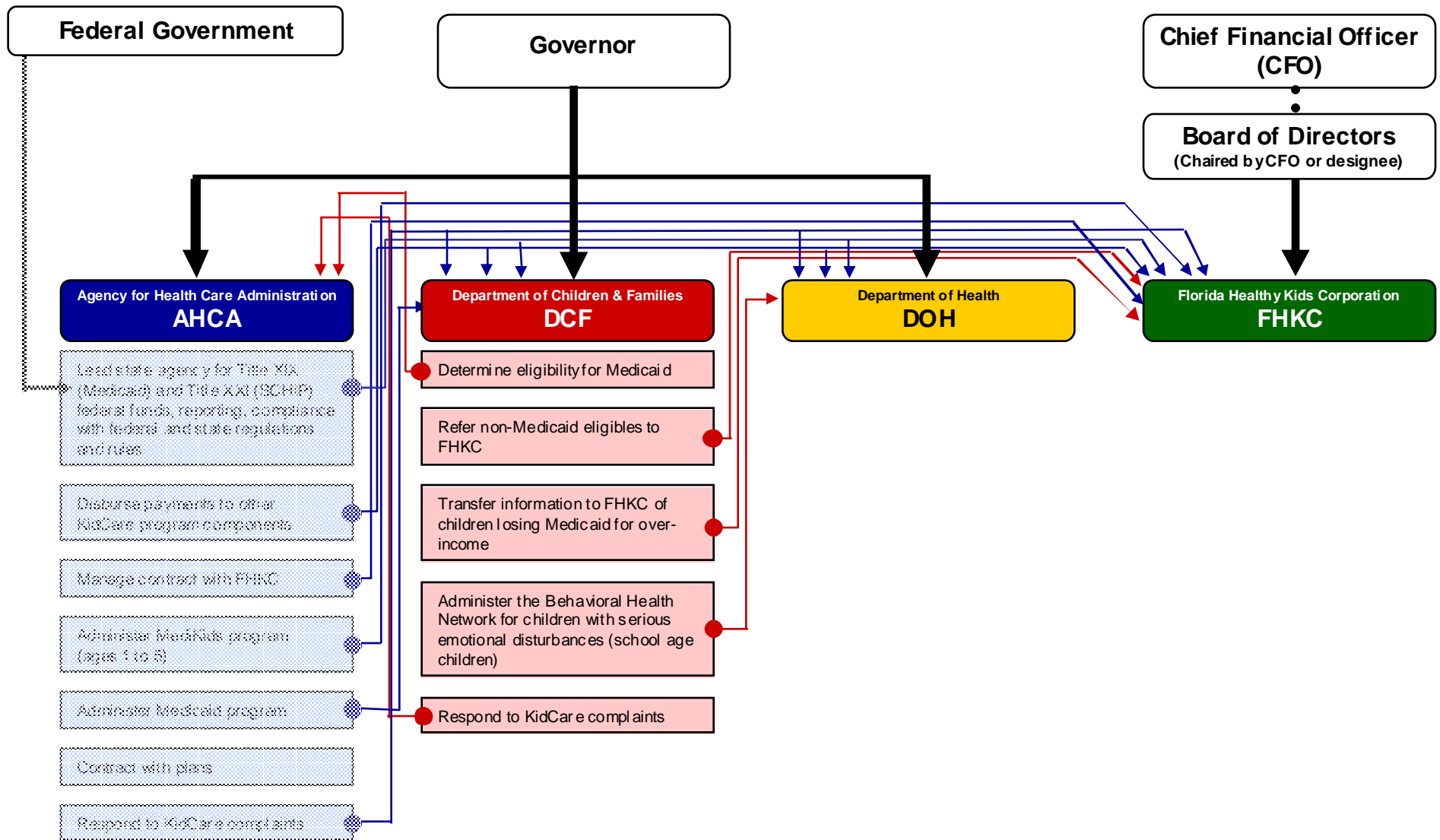
Florida KidCare Responsibilities



● = Start Here

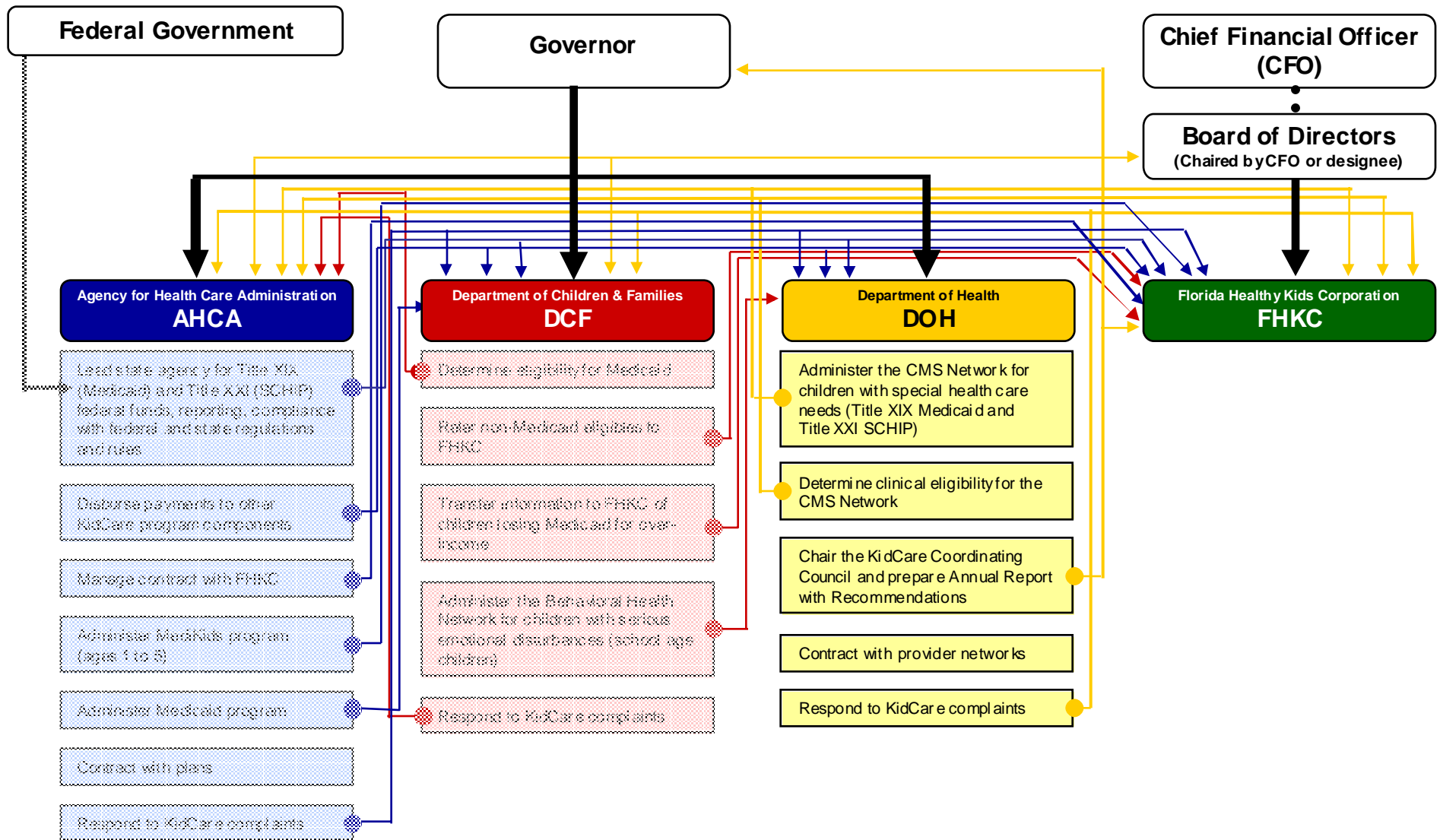
Source: Florida KidCare Coordinating Council 2007 Recommendations

Florida KidCare Responsibilities



Source: Florida KidCare Coordinating Council 2007 Recommendations

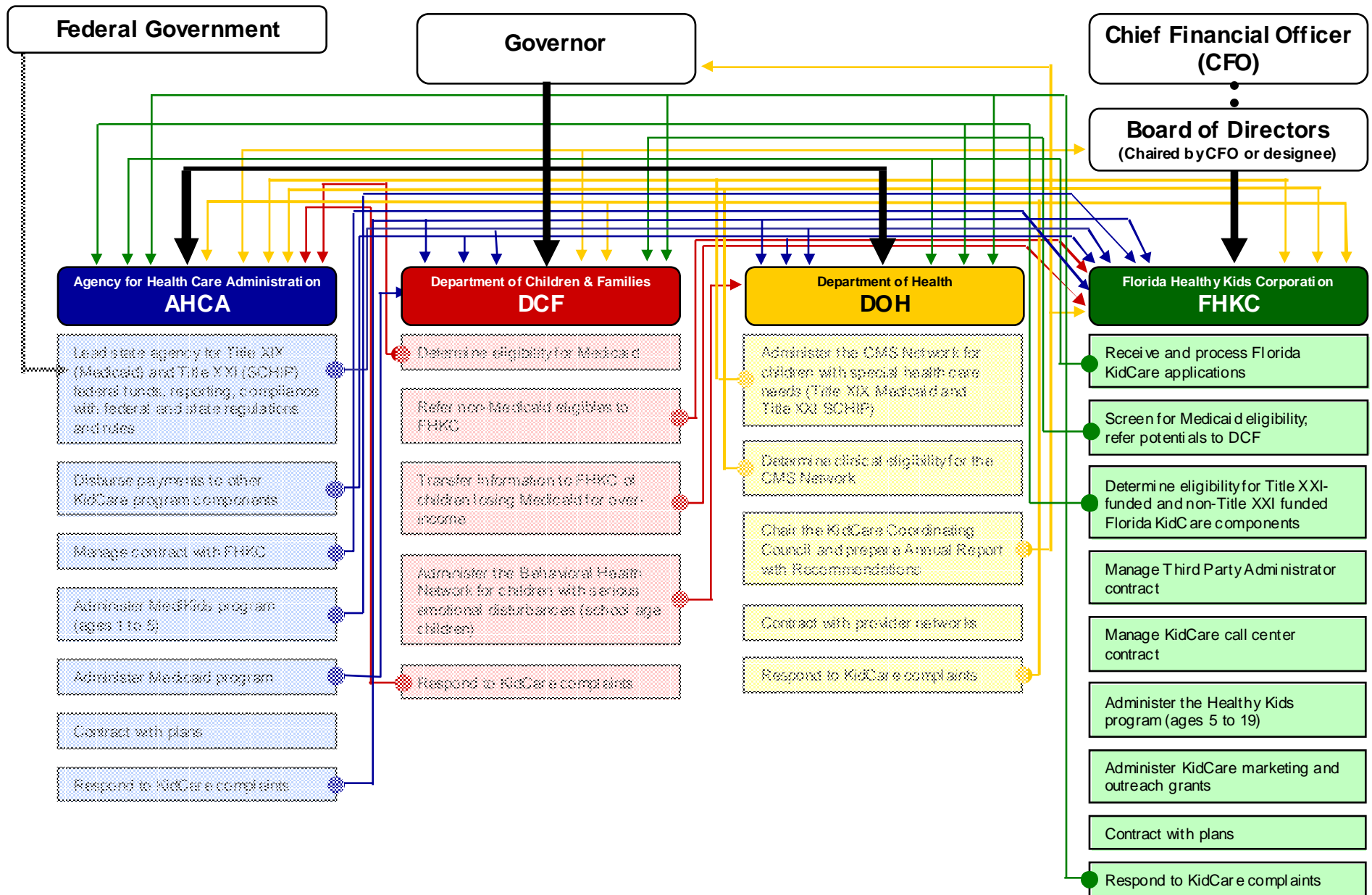
Florida KidCare Responsibilities



● = Start Here

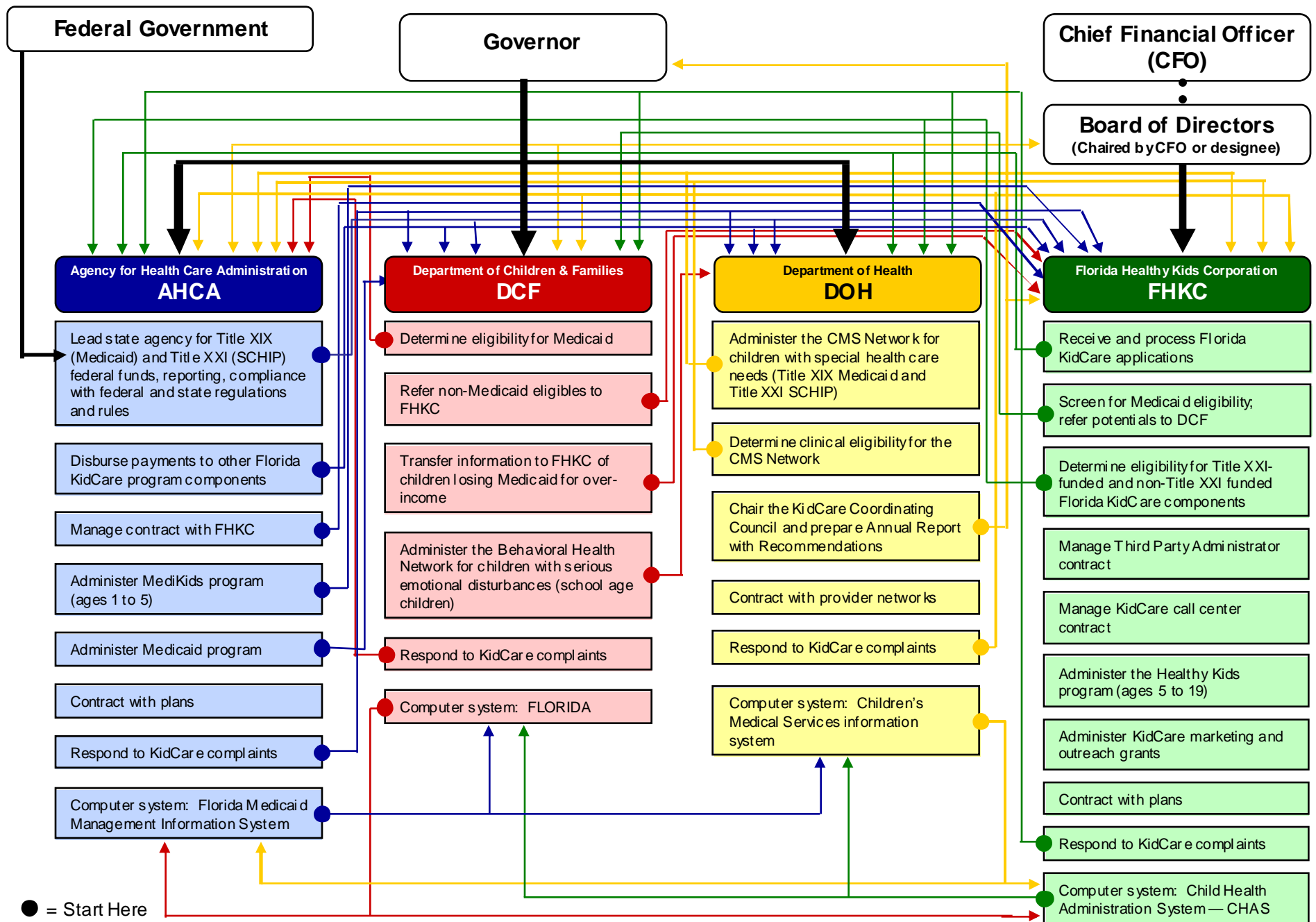
Source: Florida KidCare Coordinating Council 2007 Recommendations

Florida KidCare Responsibilities

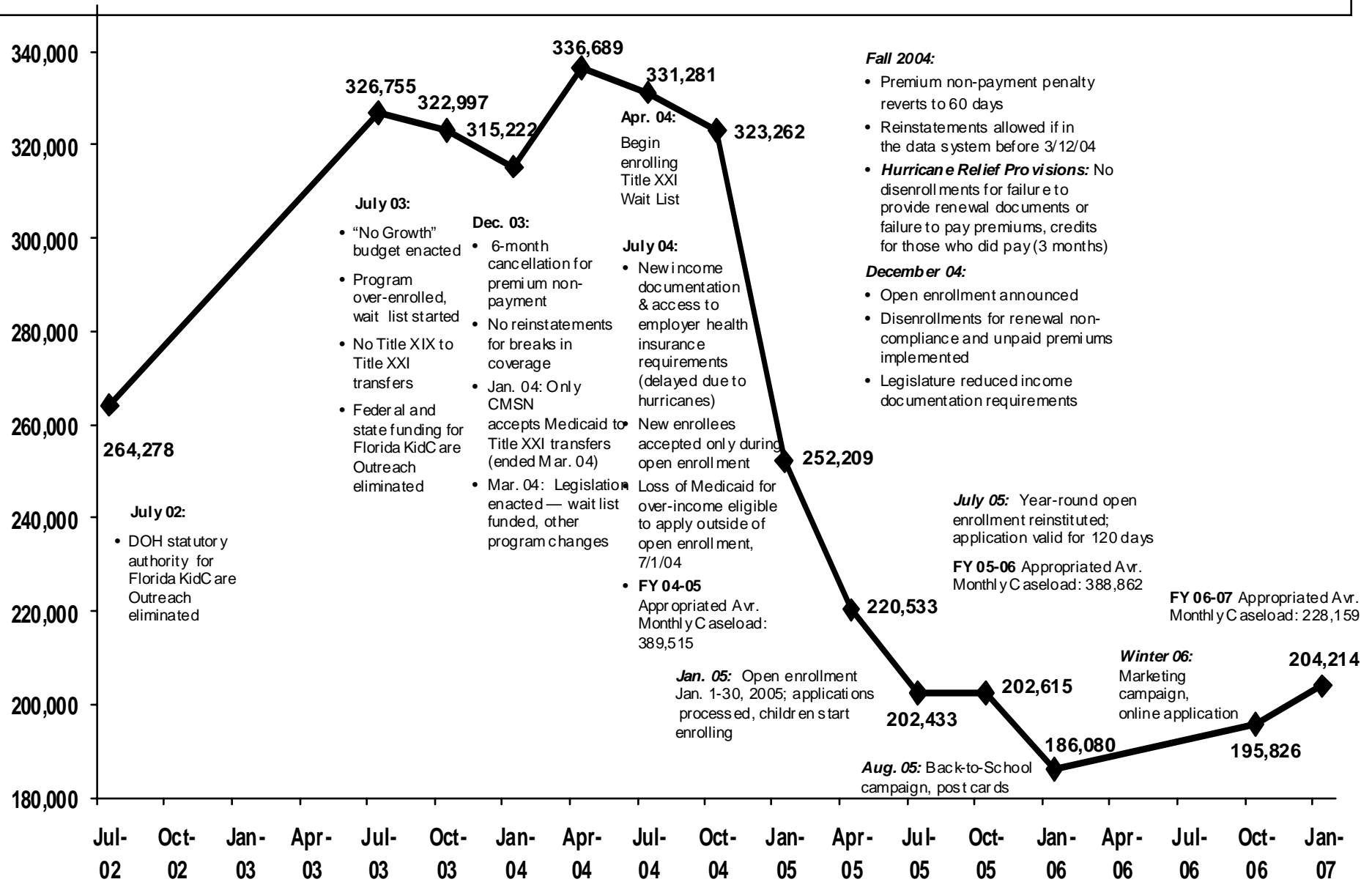


Source: Florida KidCare Coordinating Council 2007 Recommendations

Florida has one of the most complicated children's health insurance programs in the country



Title XXI enrollment is slowly rebounding, but not fast enough



Because All Children Are Our Children

