

American Public Health Association 2007

Where is the space?!

Findings from the Healthy Eating, Active Communities
neighborhood physical activity assessment survey in six
low-income communities in California

Washington, DC

November 7, 2007

Sally Lawrence, MPH

Lisa Craypo, MPH, RD

Krista Stiffler, MPH

Sarah Stone-Francisco, MPH

Sarah E. Samuels, DrPH

Samuels & Associates

Healthy Eating, Active Communities

Strategies for Increasing Opportunities for Physical Activity

- Improving walkability around schools
- Complete streets policies
- Joint use
- Securing and developing parks
- Advocating for updated park equipment
- Resident involvement in park planning
- Walkability and safety

Evaluation of HEAC Neighborhood Physical Activity

- Neighborhood Environmental Assessment
- Neighborhood Stakeholder Survey

Neighborhood Environmental Assessment

Data Collection Methodology

- Tool developed by Samuels & Associates and UCLA
- Observed streets surrounding schools and parks, as well as schoolyards and park interiors
- Collected data included:
 - Built environments
 - Walkability/bikability
 - Park amenities
 - Blight and safety

Neighborhood Environmental Assessment

Background

- Neighborhood environmental assessment
 - 12 schools and parks assessed in the 6 HEAC sites
 - 6 schools
 - 3 elementary, 1 middle and 2 high schools
 - 6 parks
 - Multipurpose community parks
 - Baseline data collected in Spring 2007

Selected Results of Environmental Assessment

- Posted speed limits
 - 62% of streets surrounding observed parks
 - 42% of streets surrounding observed schools
- No assessed streets had bike amenities or facilities
- Crosswalks
 - 79% of streets surrounding schools
 - 31% of streets surrounding parks
- 2 of 6 assessed schools had accessible schoolyards



ATTENTION

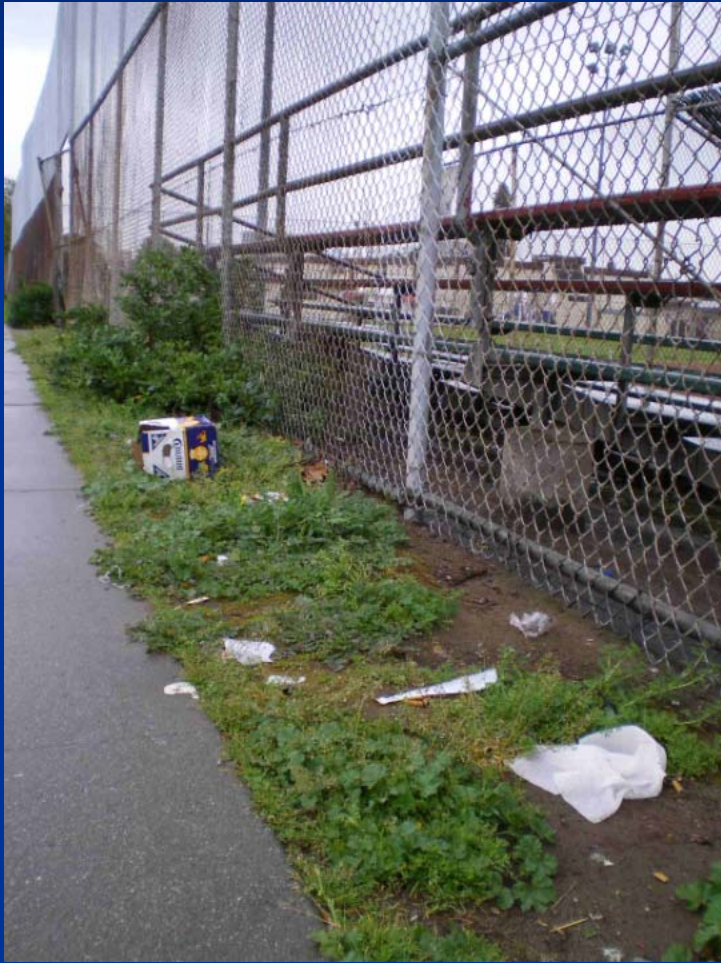
PLEASE FOLLOW THE GUIDELINES BELOW

1. ALL SPORTS COURTS AND PLAY FIELDS REQUIRE A ***BALDWIN PARK UNIFIED SCHOOL DISTRICT FACILITIES USE PERMIT.***
2. AN APPLICATION MAY BE OBTAINED BY CALLING THE B.P.U.S.D. FACILITIES OFFICE AT (626) 962-3311.
3. A COPY OF YOUR VALID **FACILITIES USE PERMIT** MUST BE AVAILABLE FOR VIEWING AT ALL TIMES UPON DEMAND BY AN OFFICIAL OF THE ***BALDWIN PARK UNIFIED SCHOOL DISTRICT.***
4. ALL ***BALDWIN PARK UNIFIED SCHOOL DISTRICT*** RULES AND REGULATIONS WILL BE ENFORCED.
5. TRAFFIC LAWS WILL BE ENFORCED PER SEC., 21113 (A) of the California Vehicle Code.

THANK YOU

 **BALDWIN PARK UNIFIED SCHOOL DISTRICT**
3699 Holly Ave. - Baldwin Park - California 91706
(626) 962-3311









Selected Results from Environmental Assessment

- Traffic control devices
 - 95% of streets surrounding schools
 - 62% of streets surrounding parks
- Sidewalks
 - 88% of streets surrounding schools
 - 92% of streets surrounding parks
 - Sidewalks are all in good or fair condition
- Observed schoolyards had minimal blight
 - 2 out of 6 schools had litter, but no potentially hazardous features

Neighborhood Stakeholder Survey

Data Collection Methodology

- Telephone survey with 34 stakeholders in 6 HEAC communities:
 - HEAC neighborhood sector lead
 - Neighborhood partners
 - City department staff
 - City Council
 - Other public officials
- Eight government officials interviewed
- Survey topics
 - Access to food and physical activity
 - Safety issues and remedies
 - Policy solutions and sentinel events
 - Role of community leaders in HEAC work
 - Influence of state and federal legislation

Selected Results from Neighborhood Stakeholder Survey

- Range of physical activity resources available to residents
 - Parks
 - Gyms/Community Centers
 - Programming
- Barriers to physical activity opportunities
 - Walkability and bikability
 - Safety
 - Limited open space

Selected Results from Neighborhood Stakeholder Survey

“It is too hard to find a facility. We don’t have parks and the streets they are too dangerous or have bumpy sidewalks.”

“Everybody walks and bikes, but it is not easy. The sidewalks are all torn up and there are no bike lanes.”

“There are a number of parks. There are lots of physical activity programs that kids can participate in at parks.”

Selected Results from Neighborhood Stakeholder Survey

Physical Activity Policies

- General plan
- Walkability
 - Safe routes to school
 - Complete streets
- Joint use/school yard improvements
- Bikability
- Parks

Increasing Opportunities for Physical Activity

Challenges

- Schools lack safe street networks for walking/biking
- Schools unavailable for public use after school
- Joint use policies not enforced, or site-specific
- Safety of streets and parks
- Neighborhoods lack access to parks
- Variety and quality of park facilities ranges widely
- All observed parks in use, but quality varied

Increasing Opportunities for Physical Activity Successes

- Youth successfully advocated to policymakers for improvements to streets and parks
- Safety improvements in dangerous intersections
- Processes developed for sustained involvement of residents in community decisions
- City and developer approval of new parks
- Development of KABOOM parks

Endpoint data collection

- Endpoint data collection begins in 2008
- Repeating neighborhood environmental assessment and neighborhood stakeholder surveys
- Looking for increased opportunities to be physically active within neighborhoods
- Goal is to institutionalize changes so they can be sustained beyond the end of the initiative

Contact Information

Sally Lawrence, MPH

Samuels & Associates

1222 Preservation Park Way

Oakland, CA 94612

(510) 271-6799

sally@samuelsandassociates.com