

Bicycle-related injuries and outcomes in a pediatric population from 1997-2006

Laura L. Ten Eyck, Ph.D.

Children's Medical Center Dallas

Diane S. Berry, Ph.D.



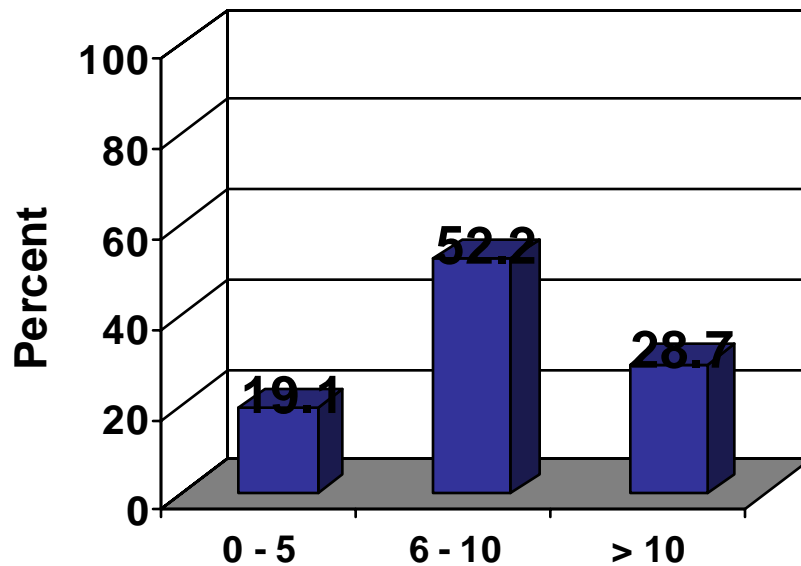
Bicycle-Related Injuries

- 1997-2006 Trauma Registry data
- N = 732
- 74.3% male
- $M_{age} = 8.41$ (0 to 17)
- Ethnicity
 - 42.4% Caucasian
 - 35.1% Hispanic
 - 17.5% African Am.
 - 4.6 % Other
 - .4 % Unknown

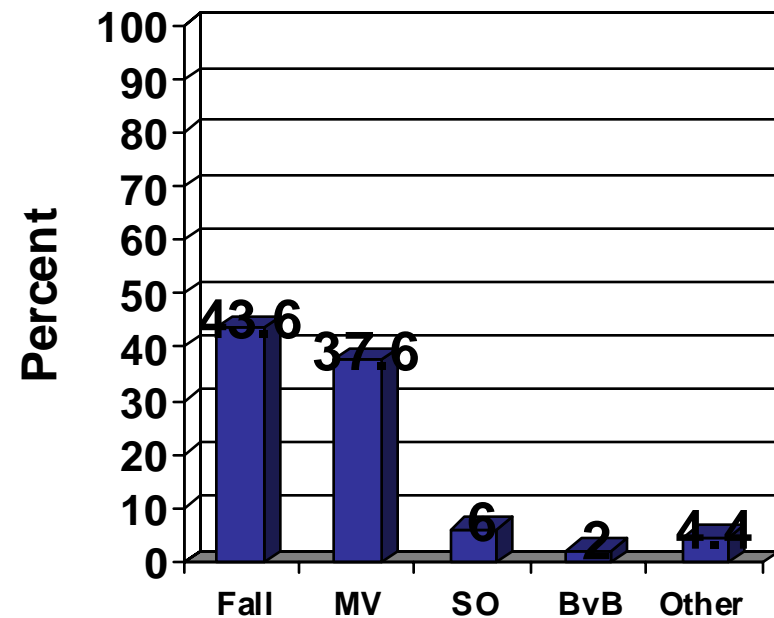


Bicycle-Related Injuries

Frequency of Injuries by Age Category



Frequency of Injuries by Type

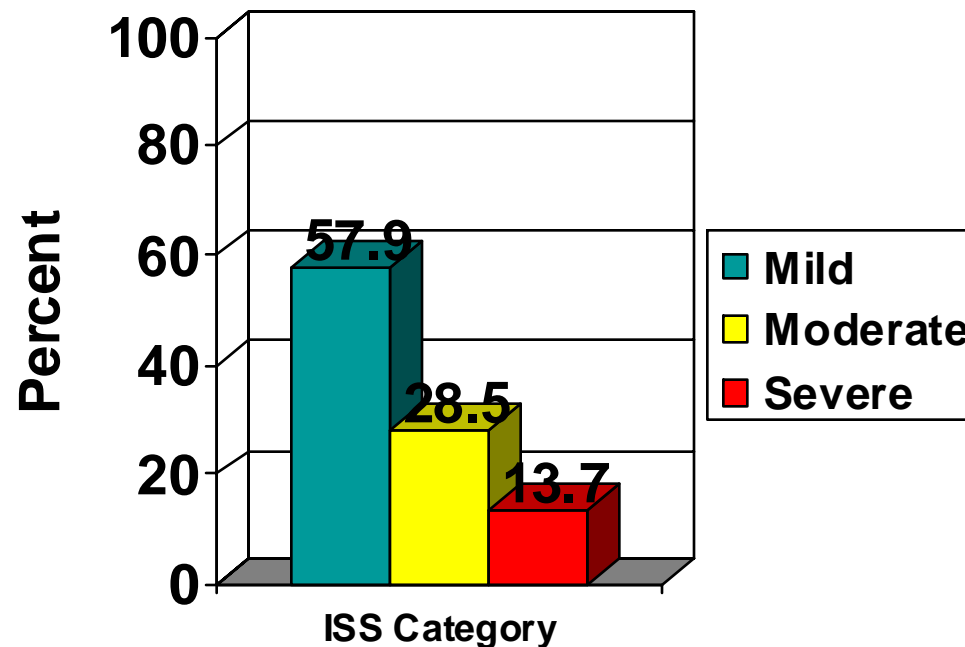


Note: Injury type "unknown" for 6.4% of cases (n = 47)



Bicycle-Related Injuries

Injuries by ISS Category

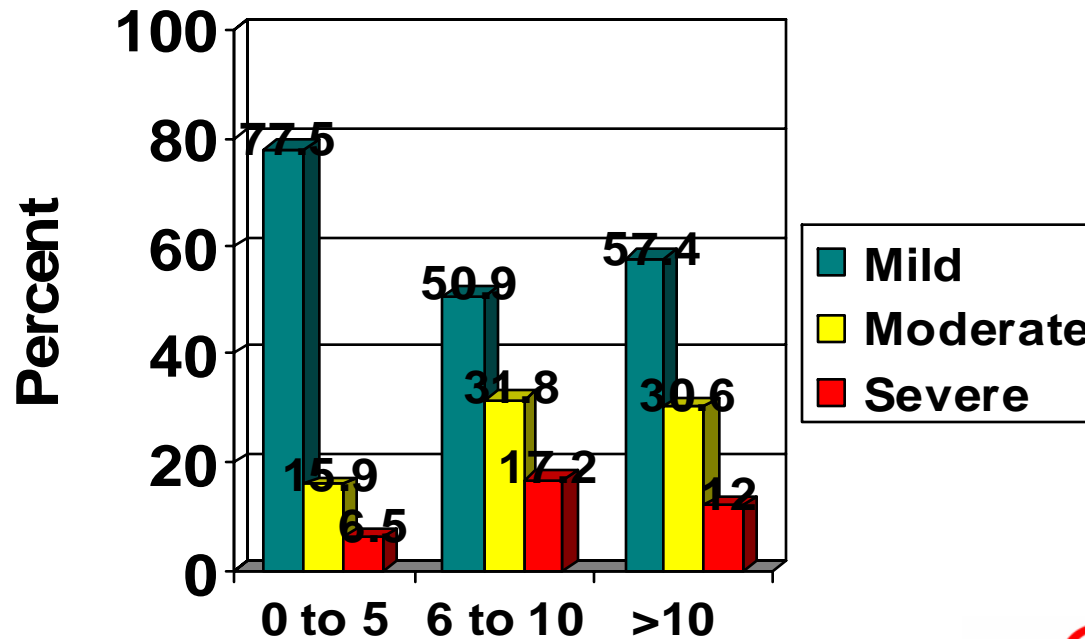


Note: Mild: 1-8; Moderate: 9-16; Severe: >16 (n = 724)



Bicycle-Related Injuries

ISS Category by Age Category



Bicycle-Related Injuries

- **5.8% helmet use**
- **12 of 13 fatalities – no helmet**
- **11 of 13 fatalities involved head injury**
- **All fatalities involved motor vehicle**



Bicycle-Related Injuries

- **Summary**
 - **At-risk for injury in Dallas area?**
 - **Male**
 - **Caucasian & Hispanic**
 - **< 10 years of age**
 - **Helmet use?**
- **Conclusions**



Thank You!

