

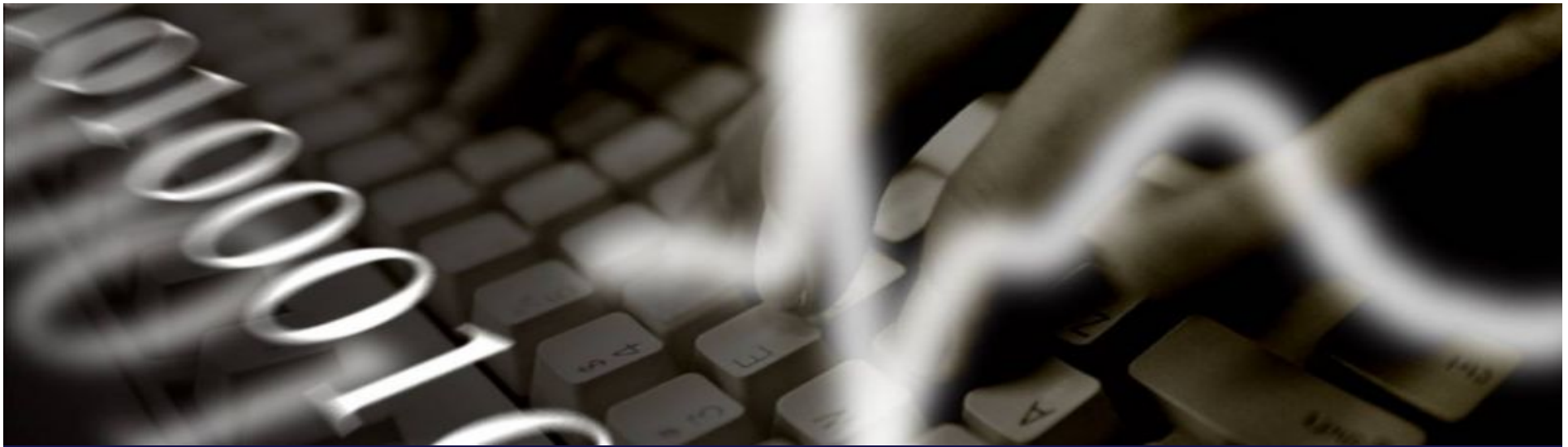


Building an Interoperable Public Health Framework: Enabling Data Exchange

Advancing Health Care Through the Adoption of EHR/PHR

Donald George, CEO

PRISM Communication Systems, Inc.



Why does Public Health need transformation?



Disasters

Why does Public Health need transformation?



Diseases

Why does Public Health need transformation?

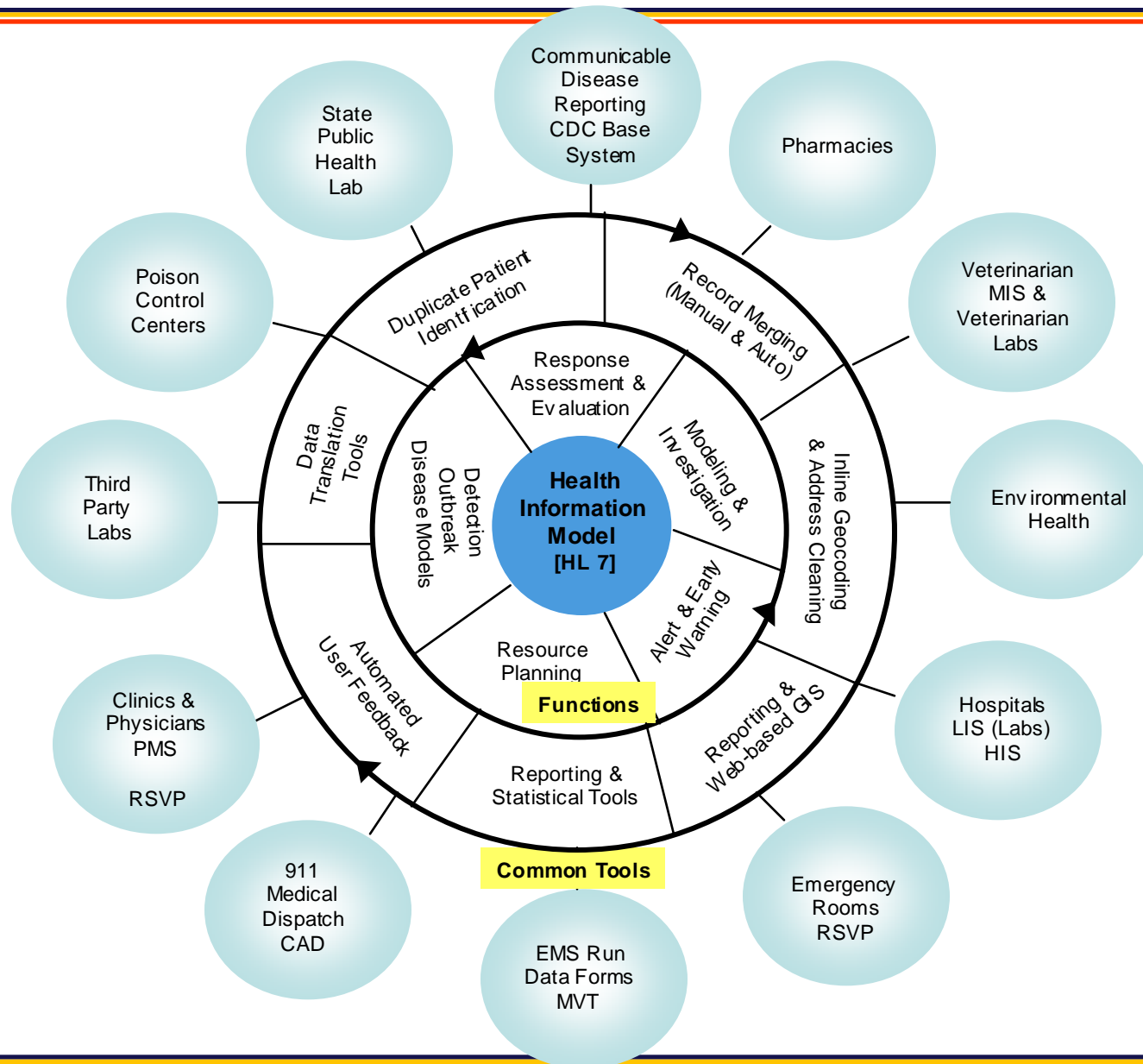


Terrorism

Why does Public Health need transformation?

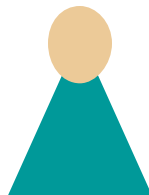


Healthcare



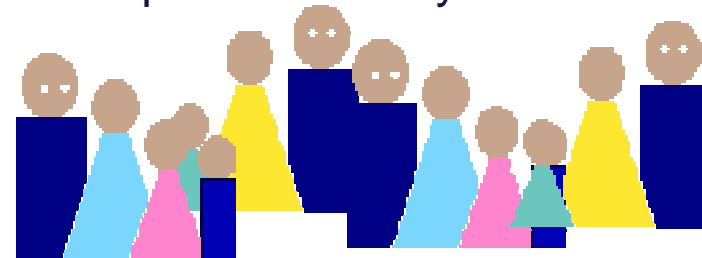
Personal Health Data

Adult Immunizations
Childhood Immunizations
Tuberculosis Testing
STD Testing and Counseling
HIV Testing and Counseling
EPSDT
Family Planning
WIC
Prenatal Care
Dental Care
HIV Treatment
Primary Care

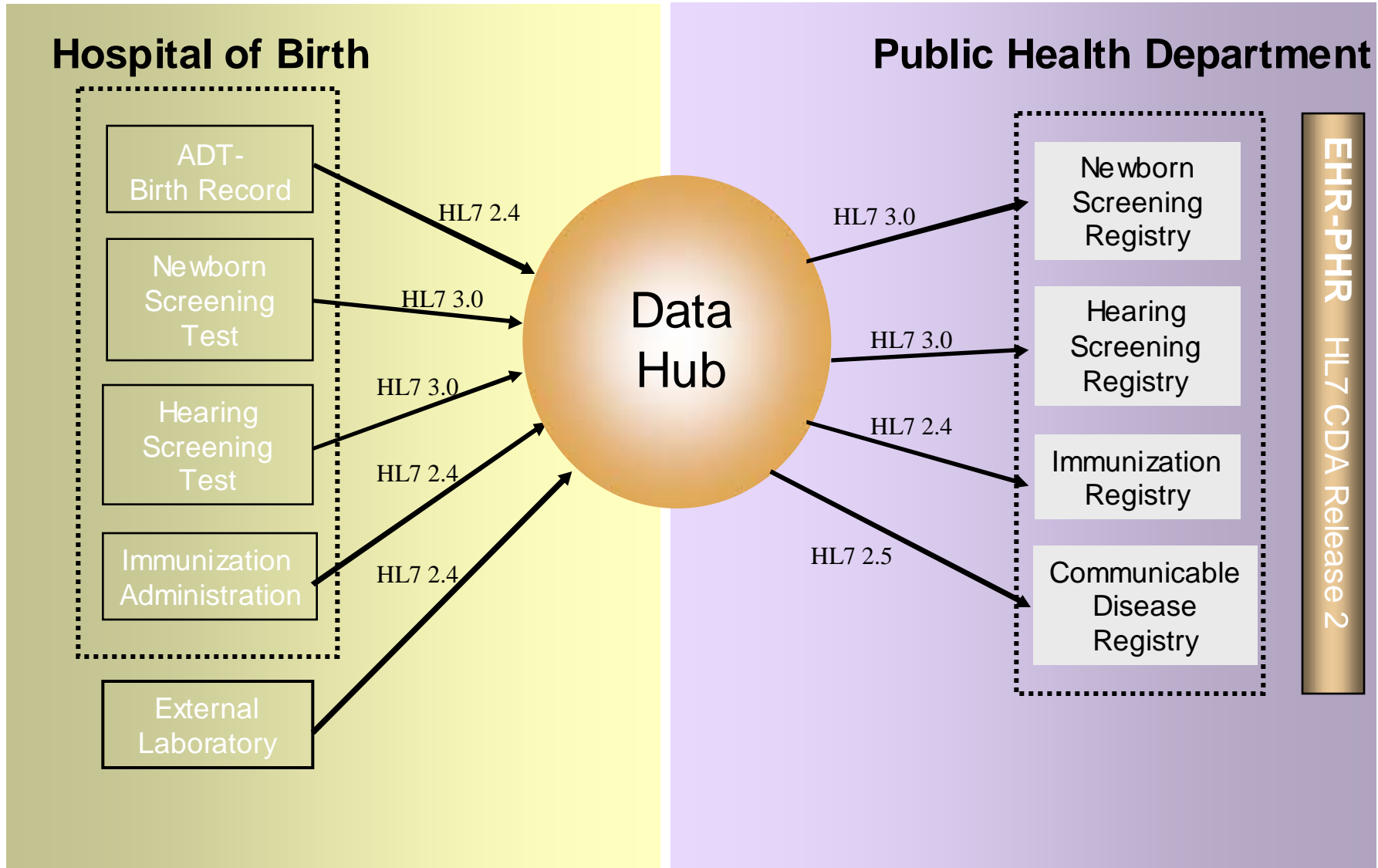


Population Health Data

Communicable Disease Control
Health Education
Epidemiology and Surveillance
High Blood Pressure Screening
Tobacco Use Reduction
Cancer Screening
Diabetes Screening
Cardiovascular Disease Screening
Injury Control
Violence Prevention
Occupational Safety and Health



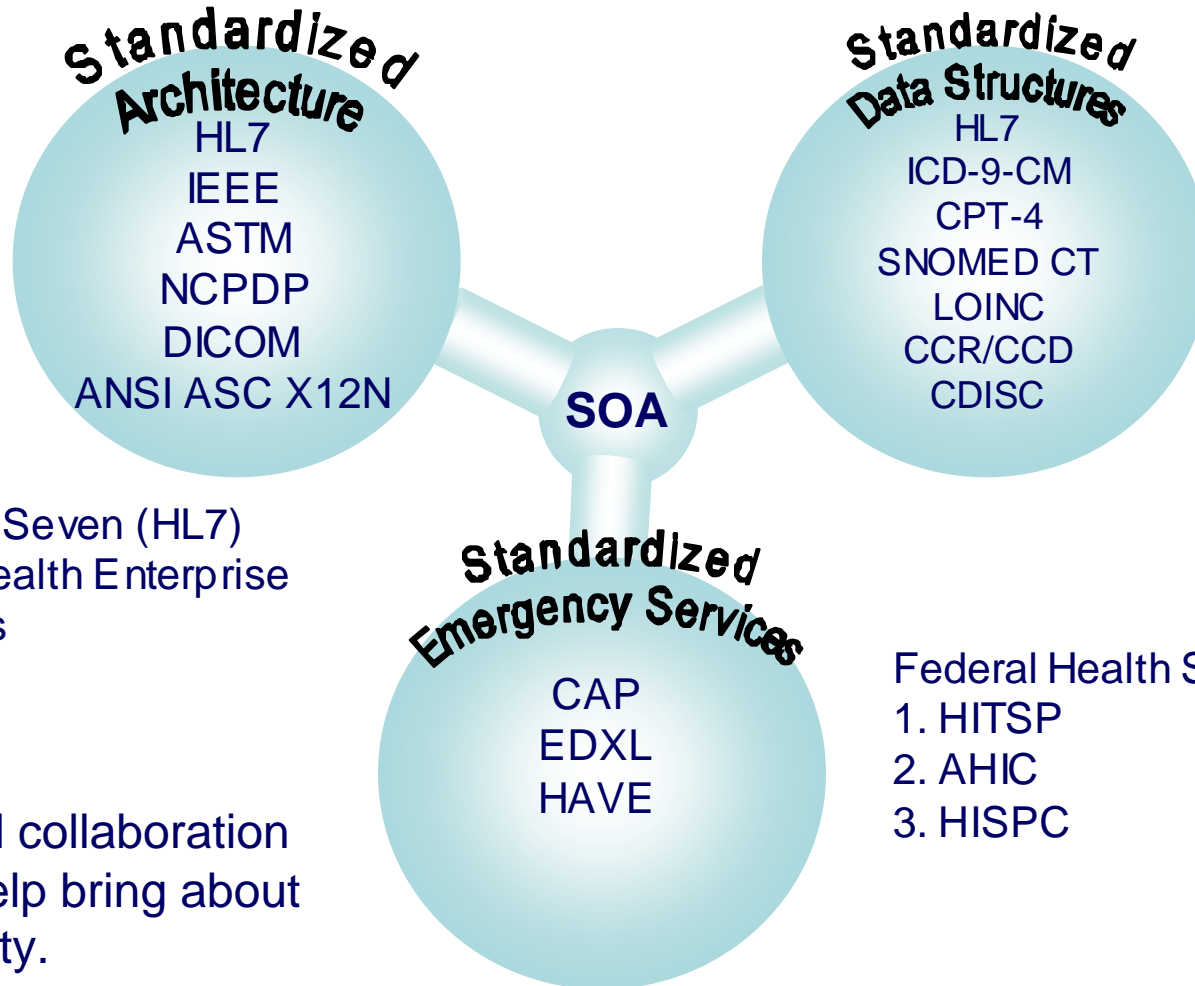




Connect the Information Systems

Integrated Health Framework

Standards for Enabling an Integrated Public Health Systems

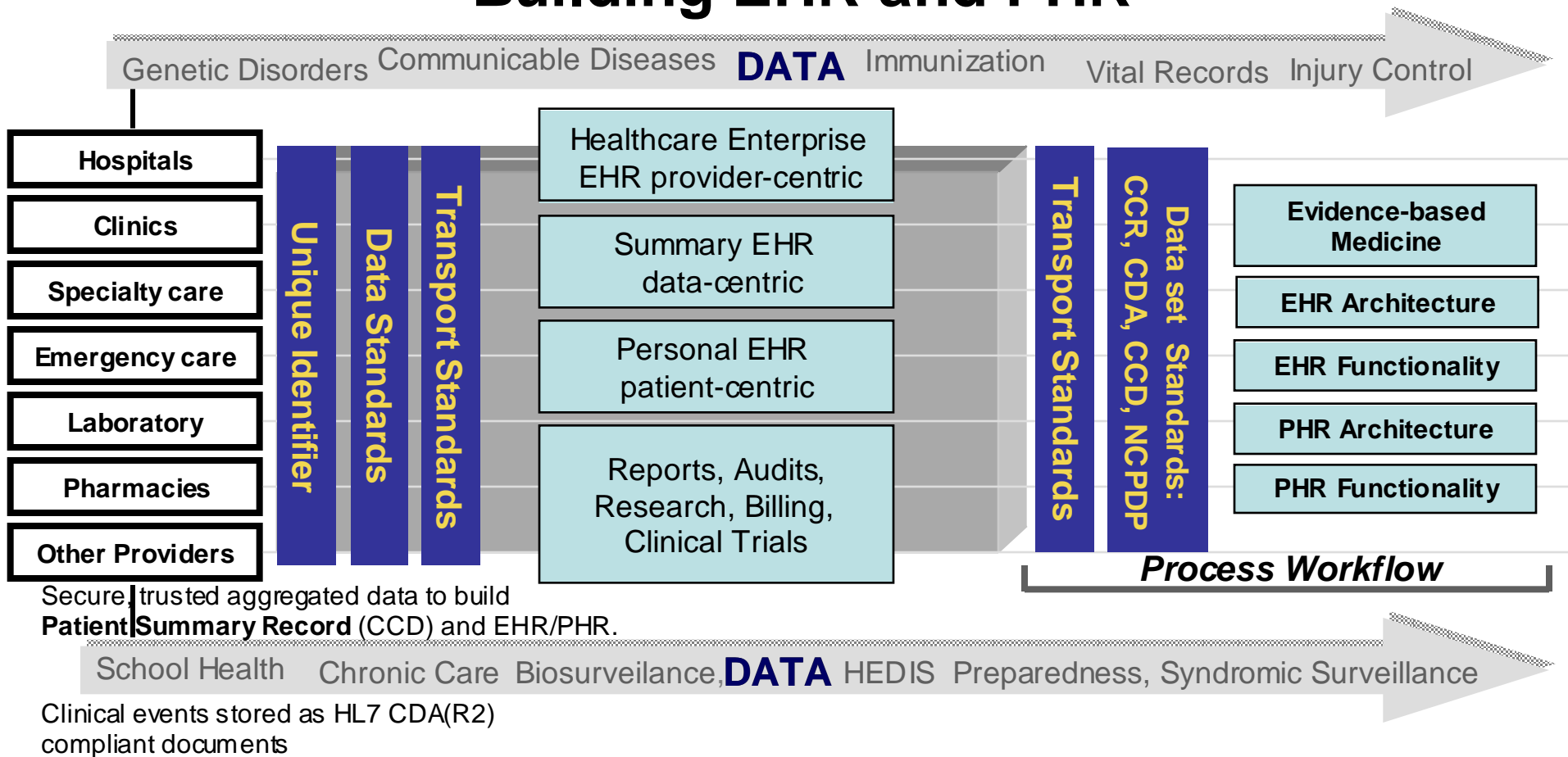


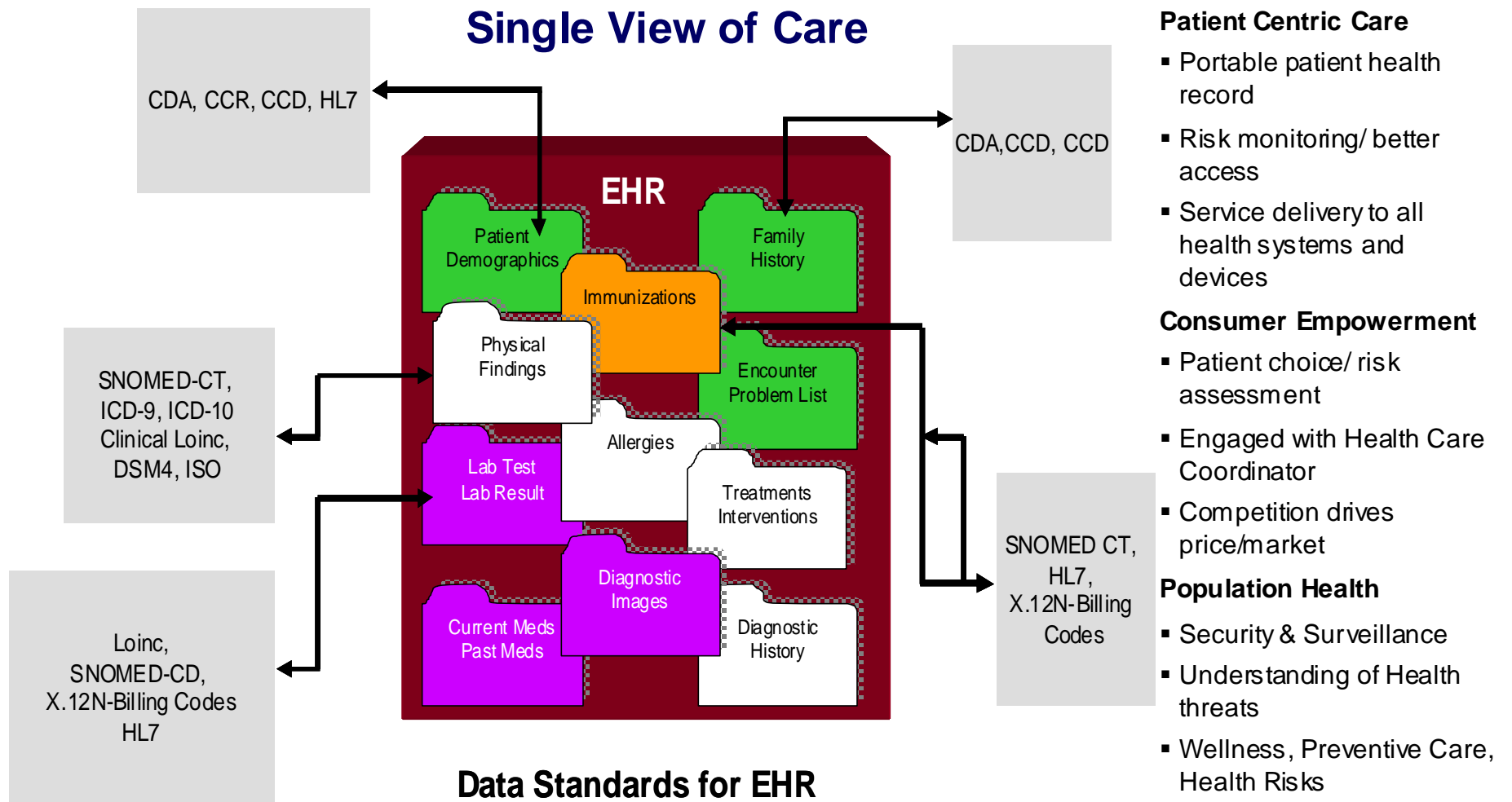
- 1. Health Level Seven (HL7)
- 2. Integrated Health Enterprise (IHE) Profiles

Standardized collaboration processes help bring about interoperability.

- Federal Health Standard Groups
- 1. HITSP
 - 2. AHIC
 - 3. HISPC

Building EHR and PHR





Connect the Information Systems

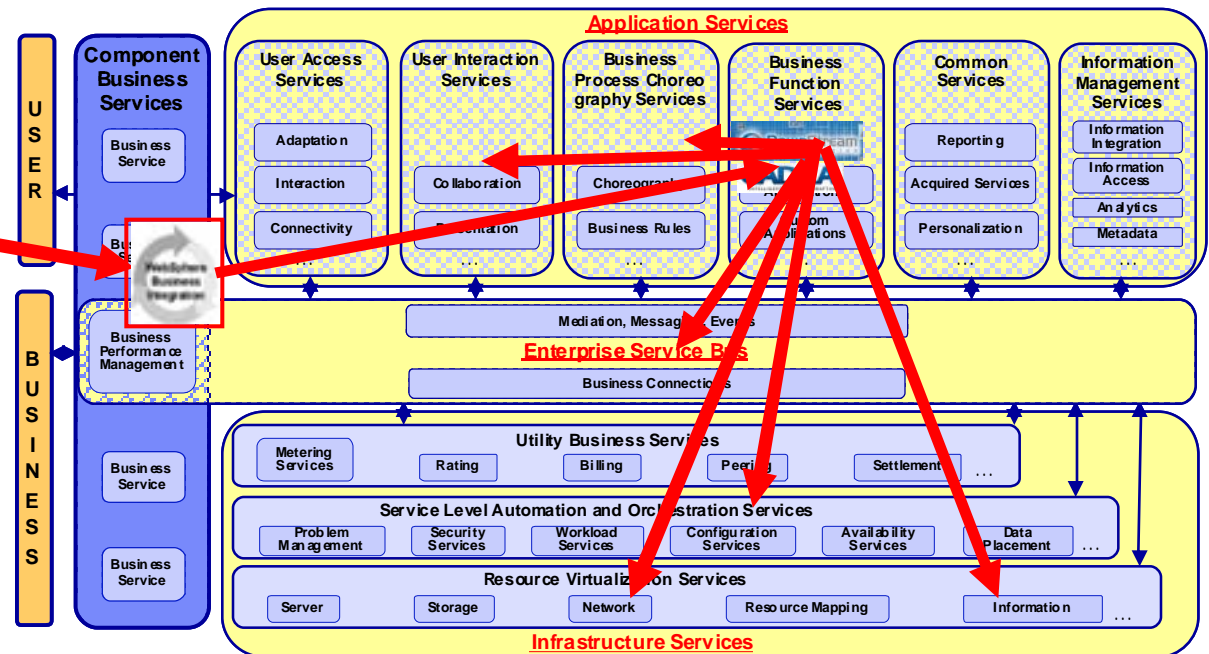
The business needs will be met by using the Service Oriented Modeling and Architecture (SOMA) to:

- Integrate HL7 standards
- Transform the public health business model across multiple functional health domains

Move from Strategy to Implementation — Health Services Model

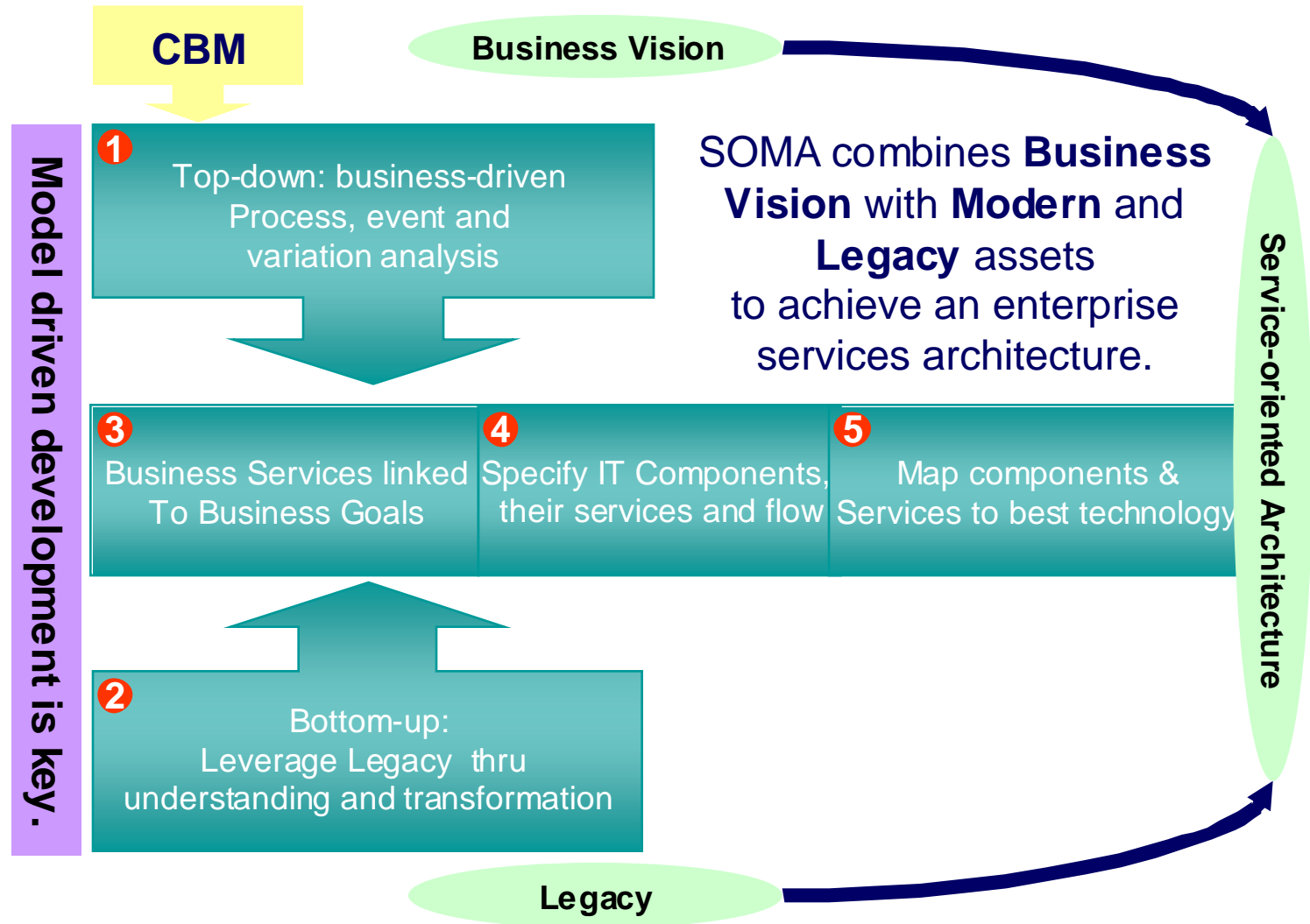
Building an EHR-PH Component Services Model For Health Information Exchange

	Business Administration	Product Management	Customer Acquisition	Customer Portfolio Management	Customer Service and Sales	Product Operations	Customer Accounting	Financial Management
Direct	Business Planning	Sector Marketing Plans	Acquisition Planning	Customer Portfolio and Analysis	Customer Sales Planning	Product Operations Management	Customer Accounting Policies	Risk Management
Control	Business Architecture	Managing Products	Acquisition Oversight	Credit and Risk Management	Customer Service Planning			
Execute	Legal	Marketing	Customer Profits	Sales	Product Processing	Billing	Treasury	
	Health	Facilities	Market Research	Compliance	Product Development and Deployment	Service Level Automation and Orchestration	Resource Virtualization	
	Use & By Systems	Product Directory	Compliance	Correspondence	Cross Selling	Product Inventory Management	Market Operations	
	Accounting & U.S.							Financial Control
								Asset Securitization
								Financial Consultation
								Collections and Recovery



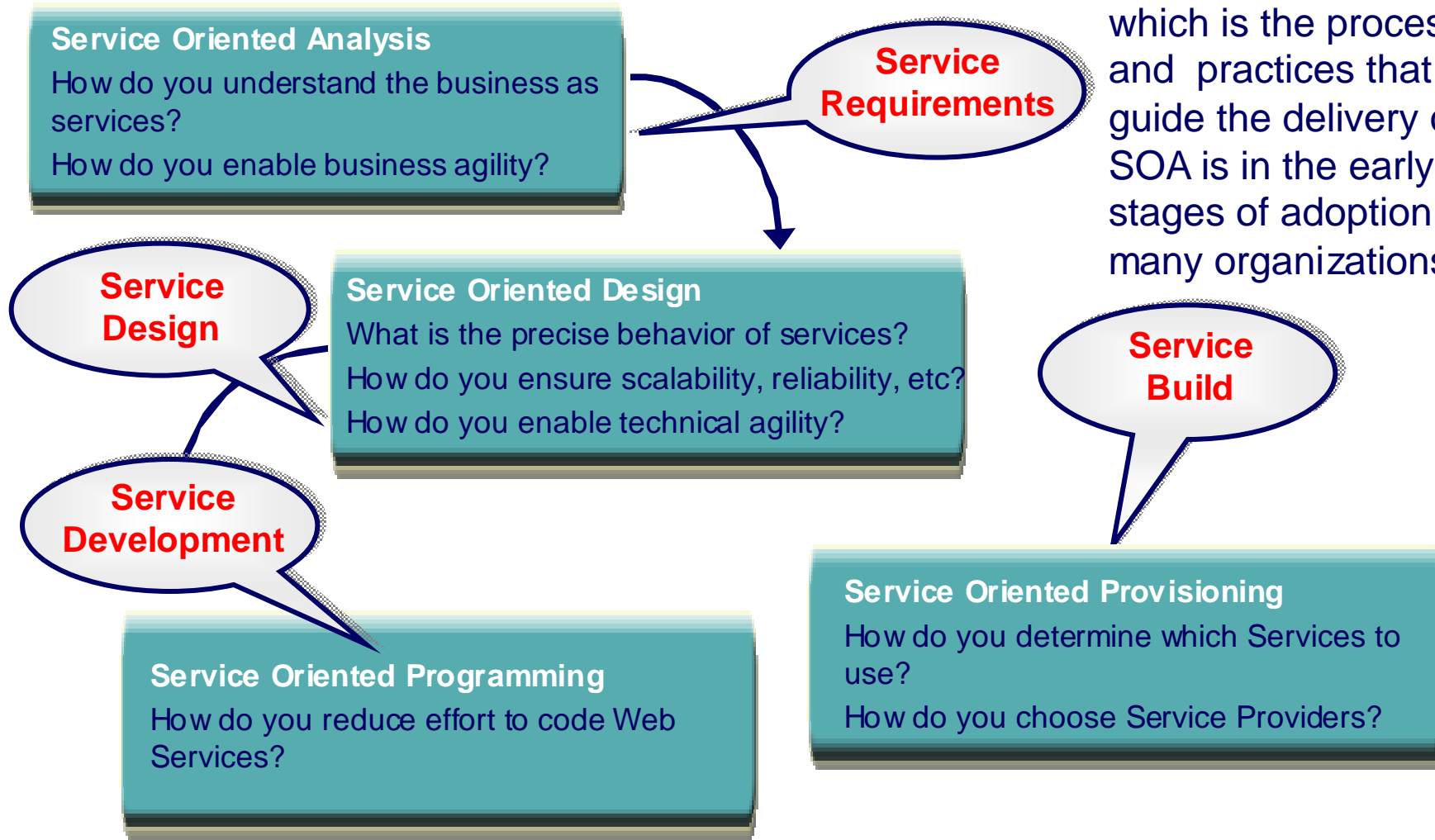
- Start with a “hot” component area – product identification
- Define a model of the component to be transformed
- Understand the underlying applications infrastructure and how it needs to change
- Identify and design the required supporting infrastructure

Service-oriented Modeling and Architecture (SOMA)



Intro to Service Oriented Architecture Modeling

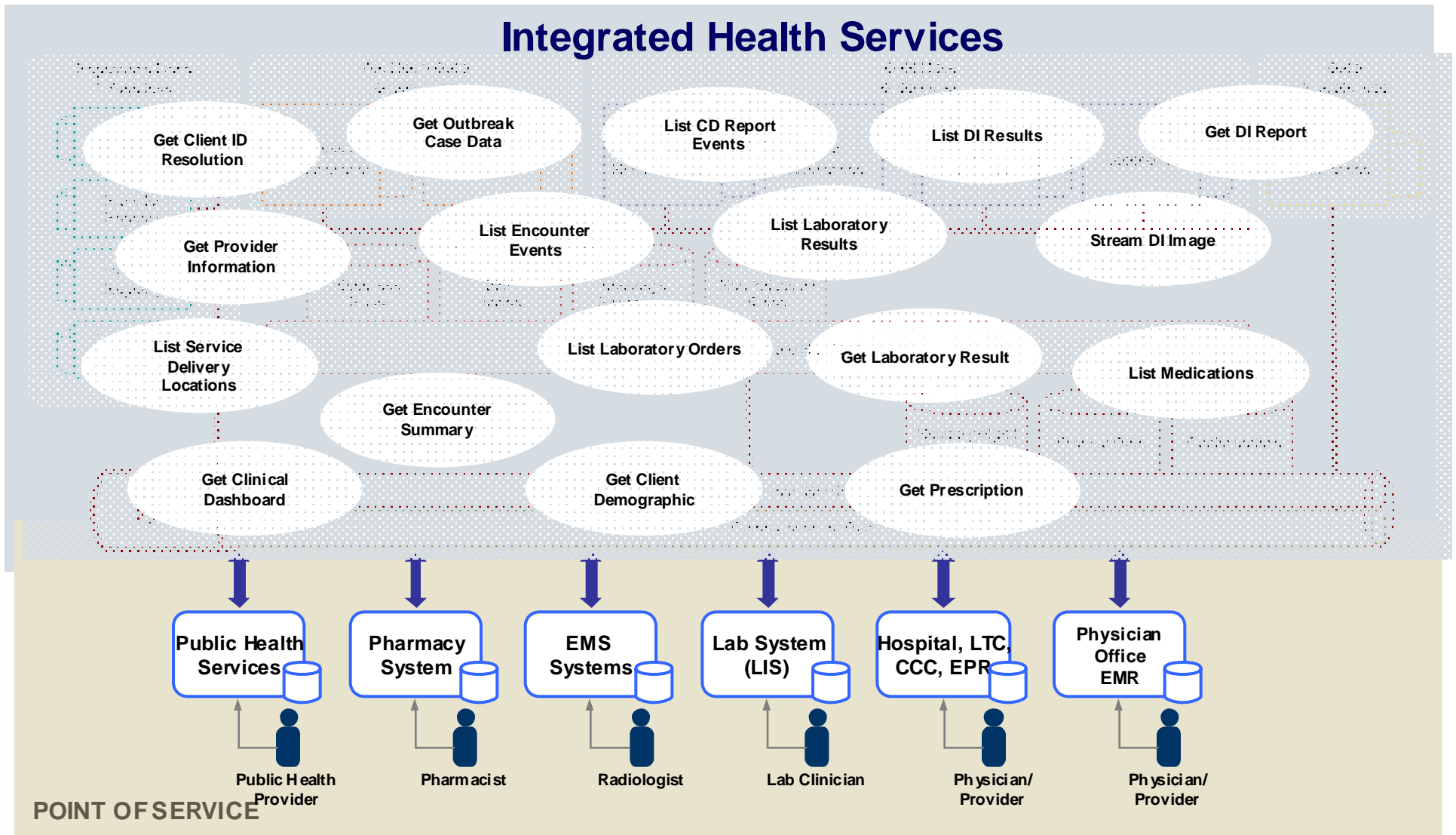
The best practices of service orientation which is the process and practices that guide the delivery of a SOA is in the early stages of adoption for many organizations

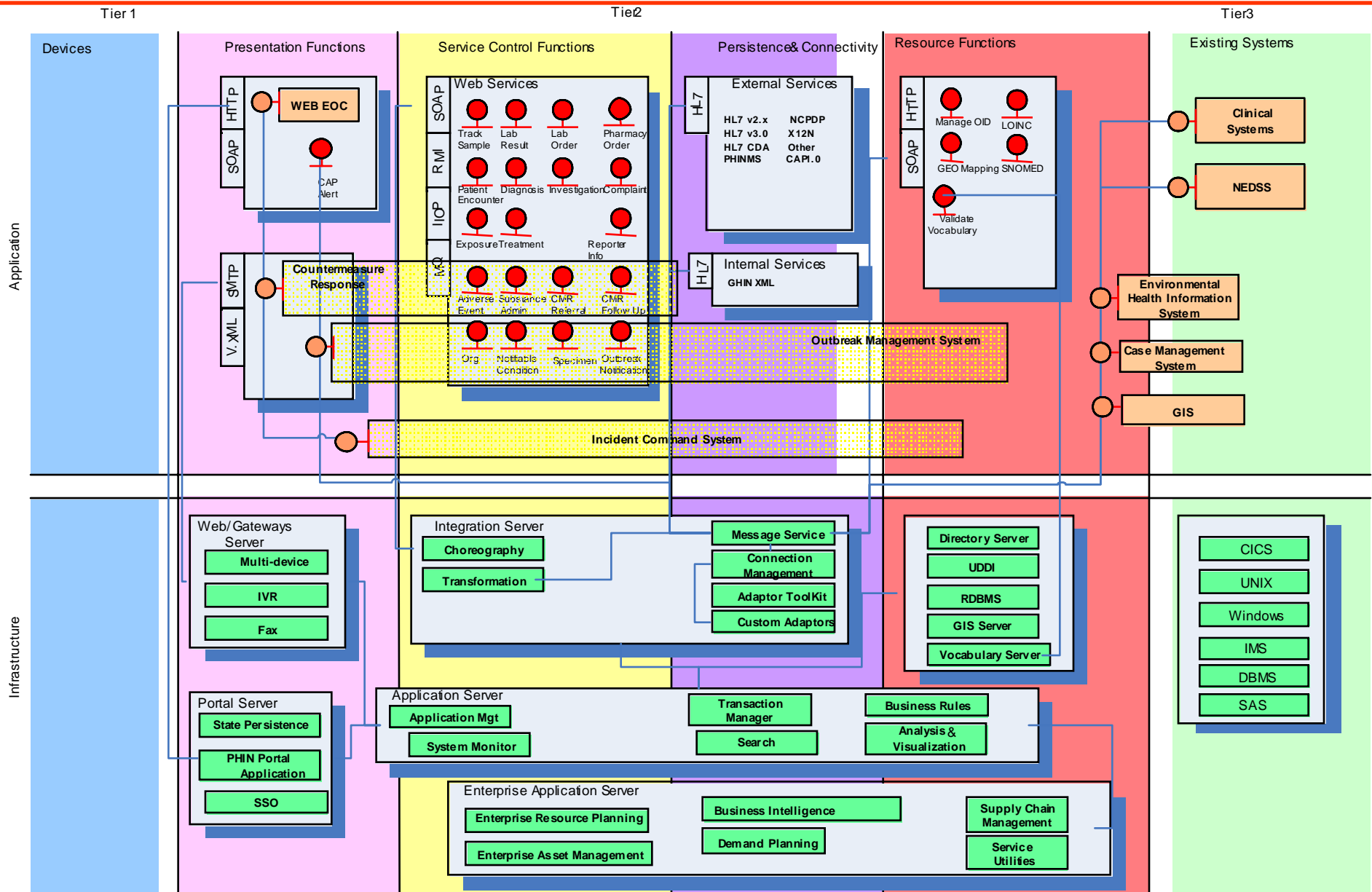


Connect the Information Systems

Integrated Health Framework

Integrated Health Services





- Integrated services improve data exchange and, ultimately, service delivery
- Provides an integrated view across the continuum of health situations
- Creates an integrated process framework that connects health and all medical services to improve quality of care and health outcomes
- Builds common, reusable services

- Without an *Enterprise Services and Information Roadmap* for Public Health, today's public health services will remain siloed
- An *Enterprise Services and Information Roadmap* is essential to moving toward achieving Interoperability
- Make data exchange real by tackling cross-enterprise processes
- Service oriented modeling is essential to effective architecture design to achieve interoperability

<http://www.prismsolution.com>

Donald George
Chief Executive Officer

PRISM Communication Systems, Inc.
1701 Barrett Parkway - Kennesaw, Georgia 30144
dgeorge@prismsolution.com

Building an Interoperable Public Health Framework: Enabling Data Exchange

Advancing Health Care Through the Adoption of EHR/PHR

Donald George, CEO

PRISM Communication Systems, Inc.

