



*Federally Mandated Referrals
from Child Welfare to
Part C Early Intervention Services:
What Works in Rhode Island*

American Public Health Association
135th Annual Meeting & Exposition ○ November 7, 2007

Taletha M. Derrington, M.A.
Institute for Child, Youth, & Family Policy
The Heller School for Social Policy & Management
Brandeis University
taletha@brandeis.edu



*Referral & Engagement of Children from
Child Welfare to Early Intervention Services:
What Works in Rhode Island*



Partners

- Meeting Street Early Intervention Program
- Rhode Island Department of Human Services (DHS)
- Rhode Island Department of Children, Youth, & Families (DCYF)
- Visiting Nurses Association (VNA) of Care New England



Presentation Overview

- ▶ Implementation plan
- ▶ Initial impact
- ▶ Lessons learned



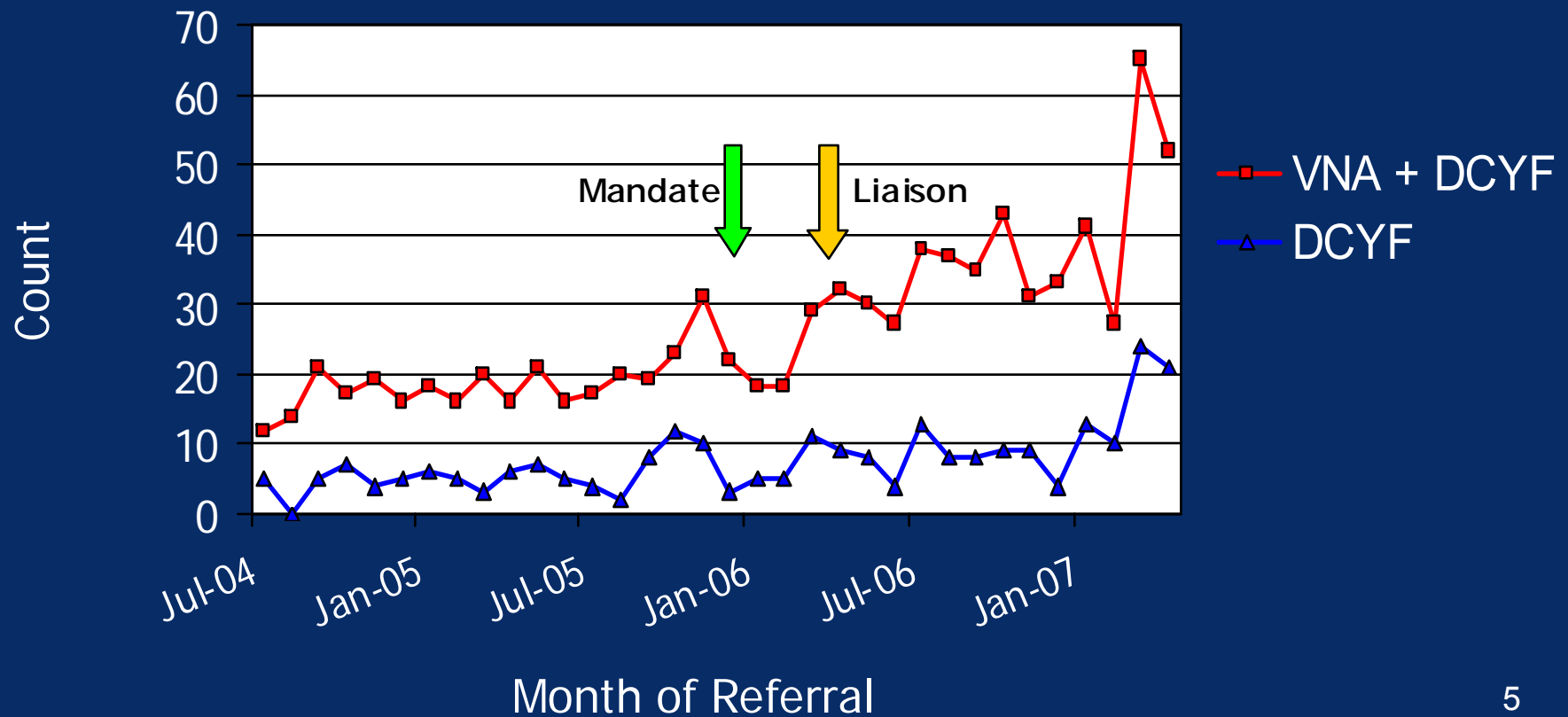
Implementation Plan

- ▶ State
 - Implemented developmental screening for children without presumptive eligibility
 - Employed referral liaison in April 2006
- ▶ Meeting Street
 - Initiated an internal referral process
 - Developed an Infant Mental Health initiative



Initial Impact: Statewide Referrals

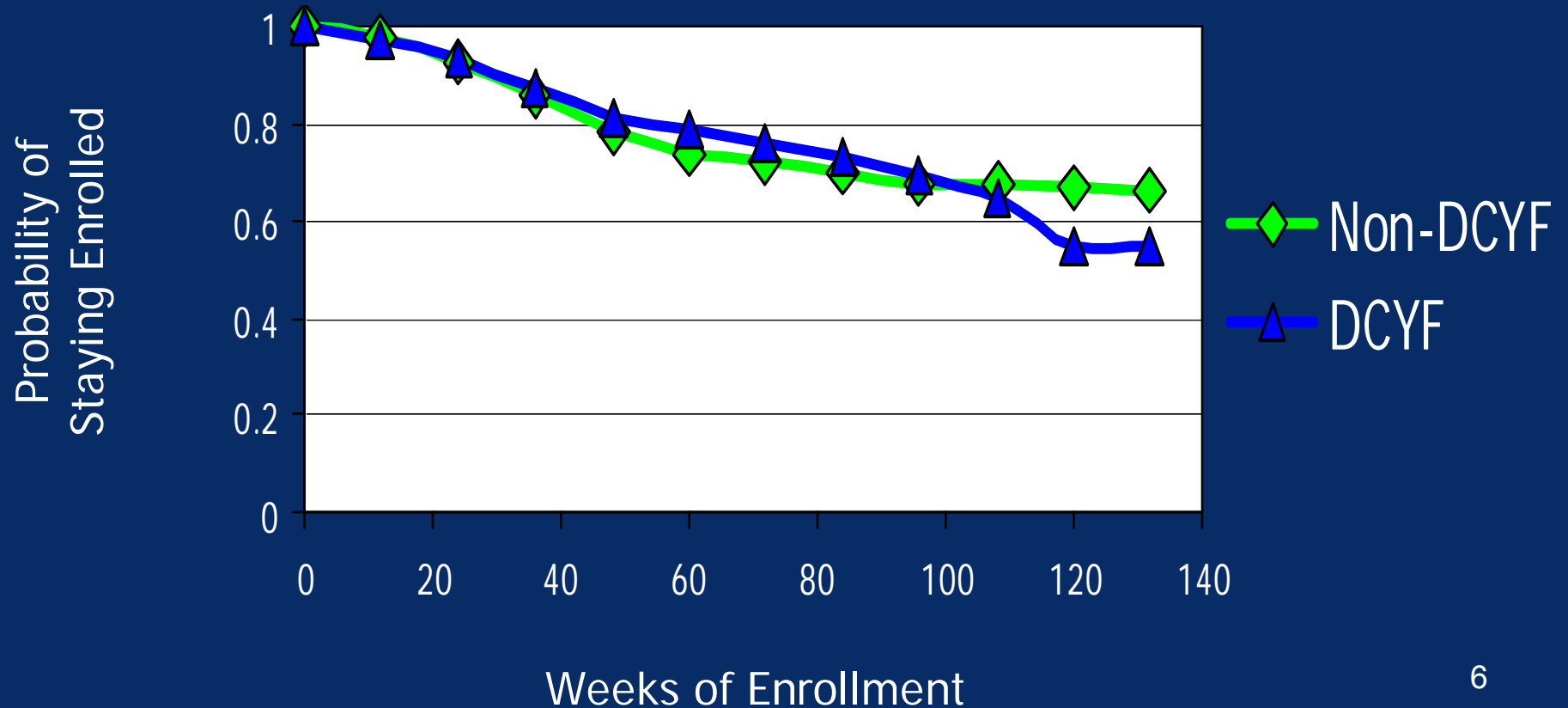
Early Intervention Referrals by Source: July 2004 - April 2007





Initial Impact: Meeting Street Service Engagement

Enrollment Duration by DCYF Status





Initial Impact: Challenges & Facilitators

- ▶ Challenges
 - Number of decision points
 - Need for service integration
 - New & existing rules
 - Need for additional resources



Initial Impact: Challenges & Facilitators

▶ Facilitators

- Progress towards service integration
- Implementation plan
- Provider discretion
- Additional resources



Lessons Learned

- ▶ Service integration helped
 - Referral liaison facilitated process
 - Written & verbal communication improved
 - Delays at decision points reduced
 - Resources identified & used – personnel, funding



Lessons Learned

- ▶ Service plan helped
 - Infant Mental Health initiative was a valued resource
 - Provider expertise & discretion key to relationships – internal support policies helped
 - Resources identified & used – personnel, funding



Lessons Learned

- ▶ Mandate provided initial leverage for improvement
 - The child welfare to early intervention link needed systematic improvement
 - Service integration benefits all children & families
 - Rules still need fine tuning



Lessons Learned

- ▶ Paradigm shift needed for sustained improvement
 - Both systems
 - Mandated vs. family-centered service paradigm
 - Early intervention
 - Infant mental health approach
 - Child welfare
 - Developmental approach



"I'm afraid you've had a paradigm shift."



Acknowledgements

Special thanks to Meeting Street, Rhode Island's Departments of Human Services & Children, Youth, & Families, the VNA of Care New England, & all of the individuals who contributed to this study.

The results & interpretations herein are the sole responsibility of the presenter. Although information has been reviewed by state representatives for accuracy, it does not represent the official position of the State of Rhode Island.



References

Hasenfeld, Y. & Brock, T. (1991). Implementation of social policy revisited. *Administration & Society*, 22(4), 451-479.

Matland, R. E. (1995). Synthesizing the implementation literature: The ambiguity-conflict model of policy implementation. *Journal of Public Administration Research & Theory*, 5, 145-174.

Mazmanian, D. A. & Sabatier, P. A. (1983). *Implementation & public policy*. Glencoe, IL: Scott, Foresman, & Co.

Prottas, J. (1979). *People processing: The street-level bureaucrat in public service bureaucracies*. Lexington, MA: Lexington Books.