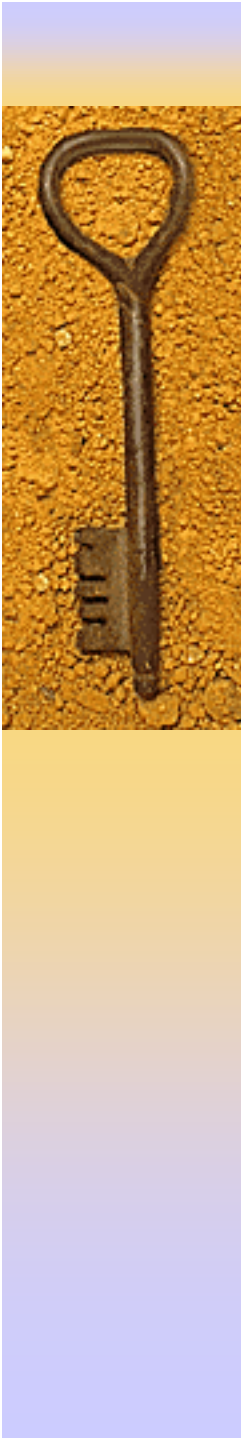




Community Context and the Premarital Sex among Young Women in Kenya, Nigeria, and the Philippines from 1993 to 2003

Chi Chiao, PhD
Department of Public Health
College of Medicine
National Cheng Kung University
2007 APHA

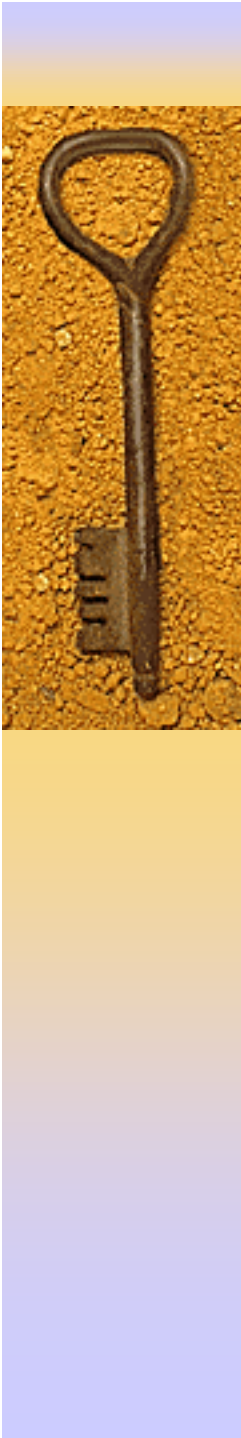


Acknowledgement

This research is supported by grant NSC-96-2314-B-006-054 from National Science Council in Taiwan to Chi Chiao

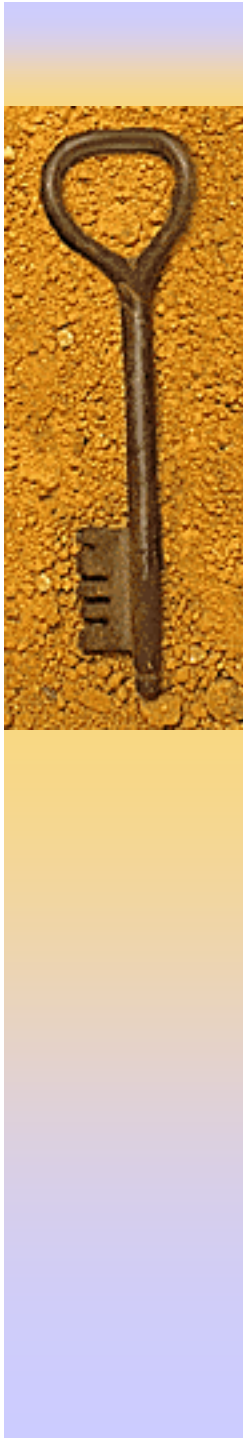


行政院國家科學委員會
National Science Council



Why premarital sex?

- ◆ Rising rates of premarital sex among the youth globally
- ◆ Implications for the prevalence of forced sex, early childbearing, school drop-outs, diminished mental health, deviant behaviors, and sexually transmitted diseases among the female youth



Main objectives

- ◆ **Main objective:**
 - a) To describe trends and differentials in premarital sex among female youth aged 15-24 across Kenya, Nigeria, and the Philippines
 - b) To explore community influences on premarital sex trends net of other individual and household characteristics

What accounts for premarital sex?

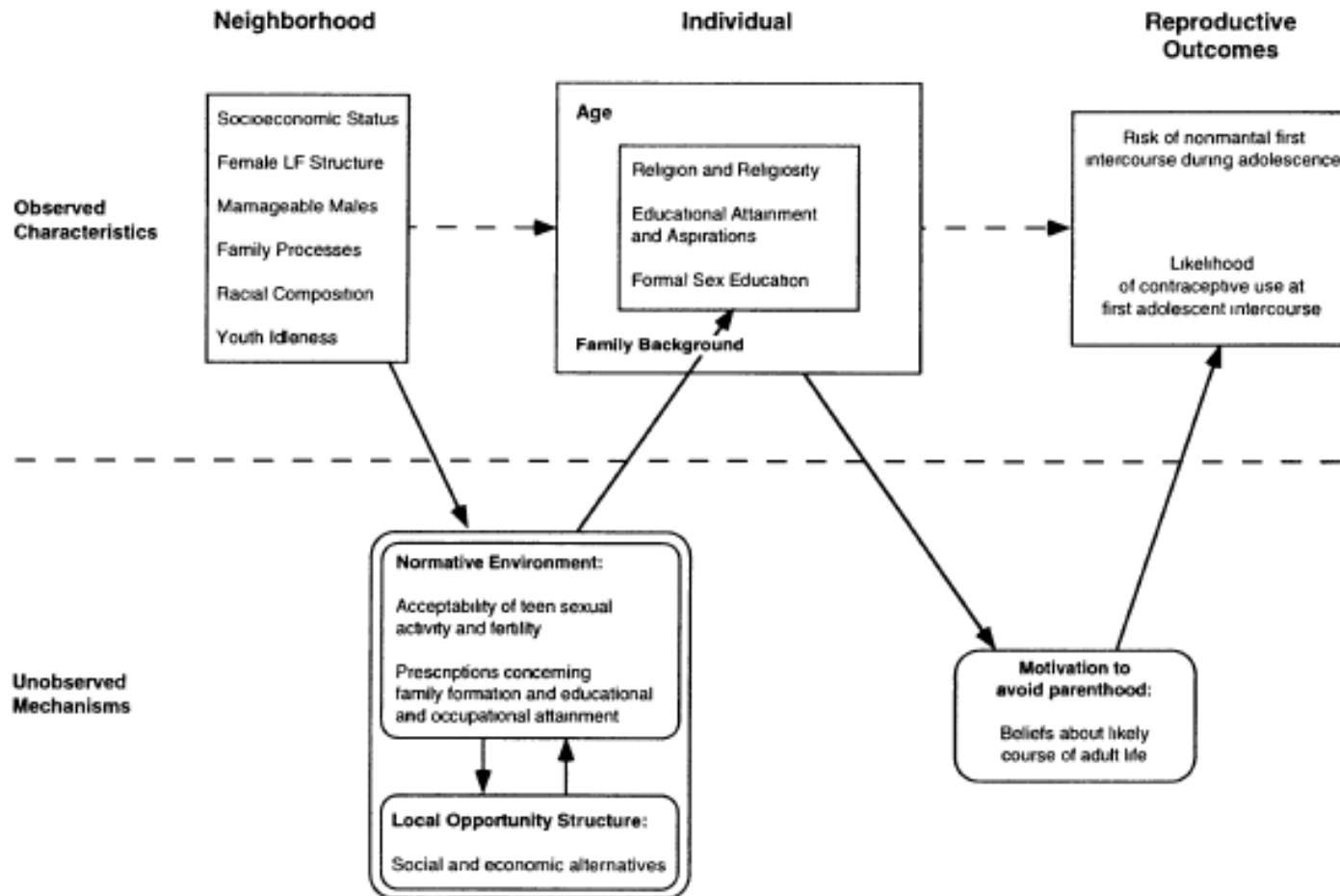
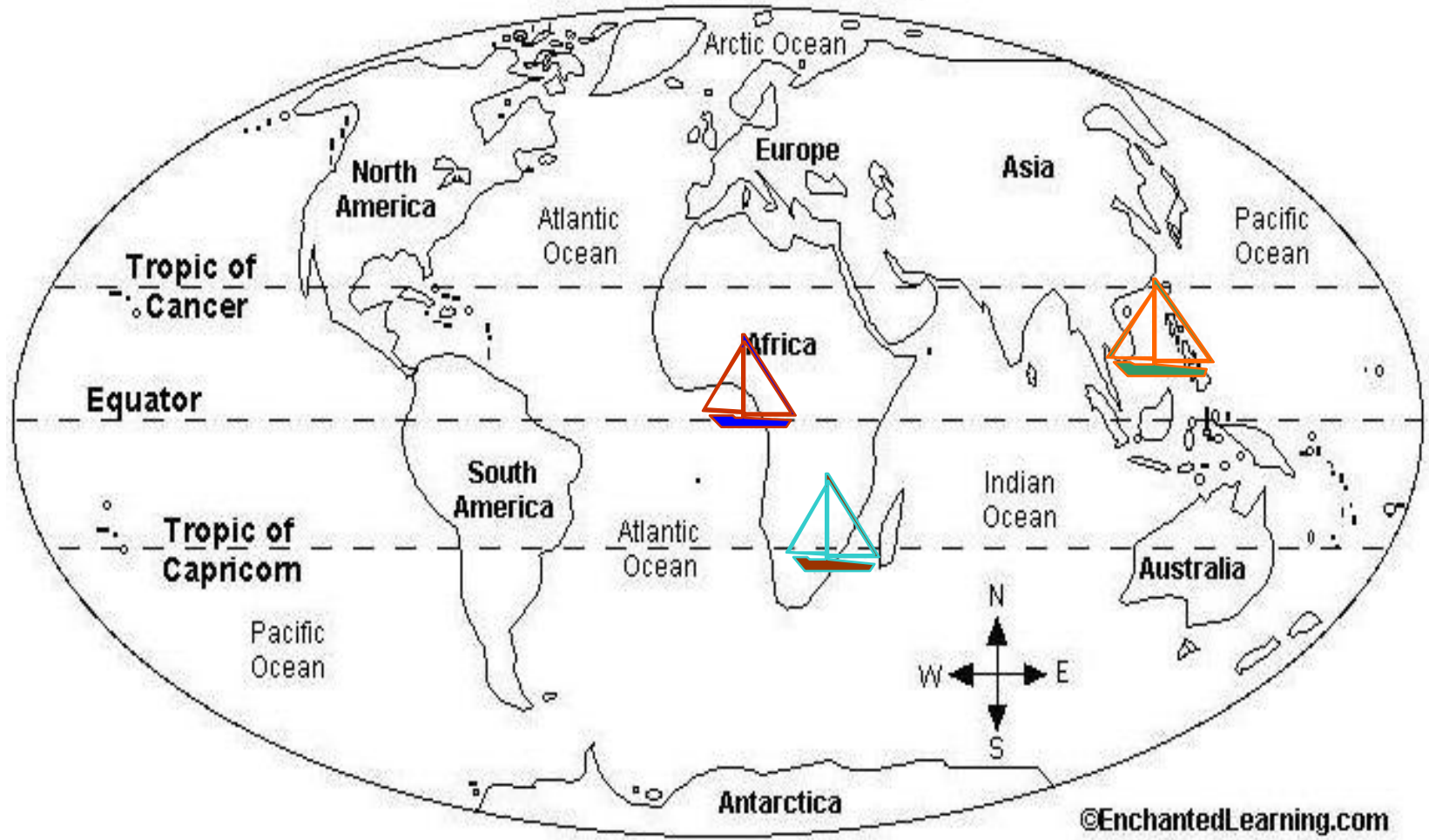


Figure 1. Conceptual Model of Neighborhood Effects on Adolescent Women's Sexual and Contraceptive Behavior

Source: Brewster KL (1994). Neighborhood context and the transition to sexual activity among young black women. *Demography*. 31(4): 603-614.

Location of study area

The World





Data source

- ◆ Multiple cross-sections of Demographic and Health Survey (DHS) data
- ◆ Multistage stratified sampling is used to achieve nationally-representative samples of households and individuals
- ◆ Questionnaires cover topics such as living conditions, fertility, nutrition and health behaviors, illness, and child mortality

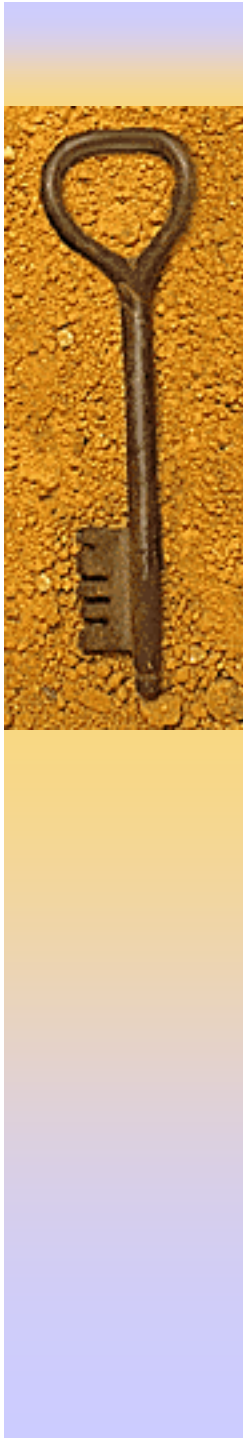


Measures & Data analysis

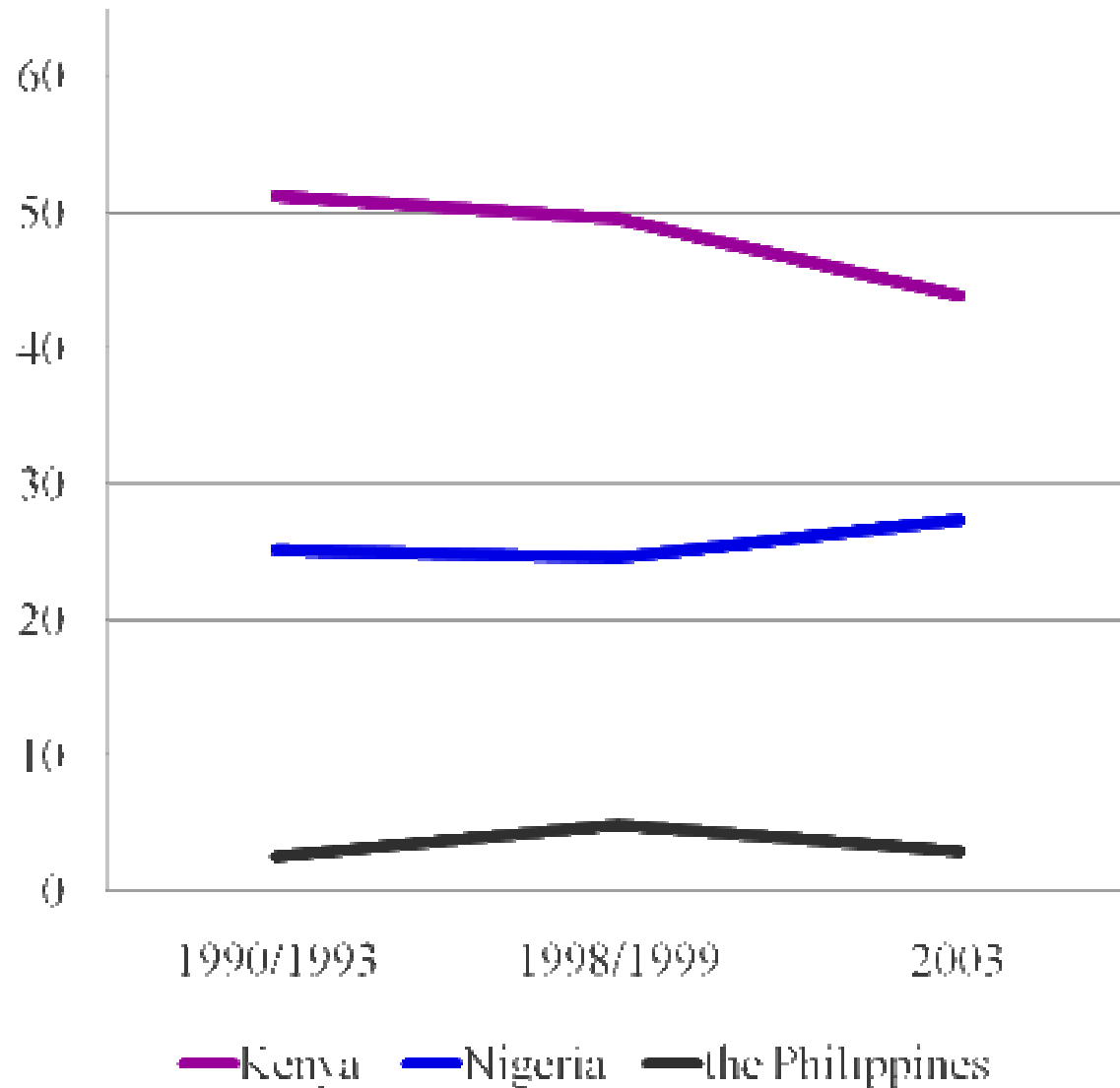
- ◆ Binary outcome: premarital sex
- ◆ Contextual factors:
 - Community capital variables. Inclusion of community education, percent of electricity, and percent of female labor force participation .
 - Sexual behavior related norms. Inclusion of percent of first sex under 15 in the community and community mean marriage age
- ◆ Individual/household controls:
 - Inclusion of age, education, residence, household size, number of children under 5.
- ◆ Multilevel logistic regression analysis



Preliminary findings

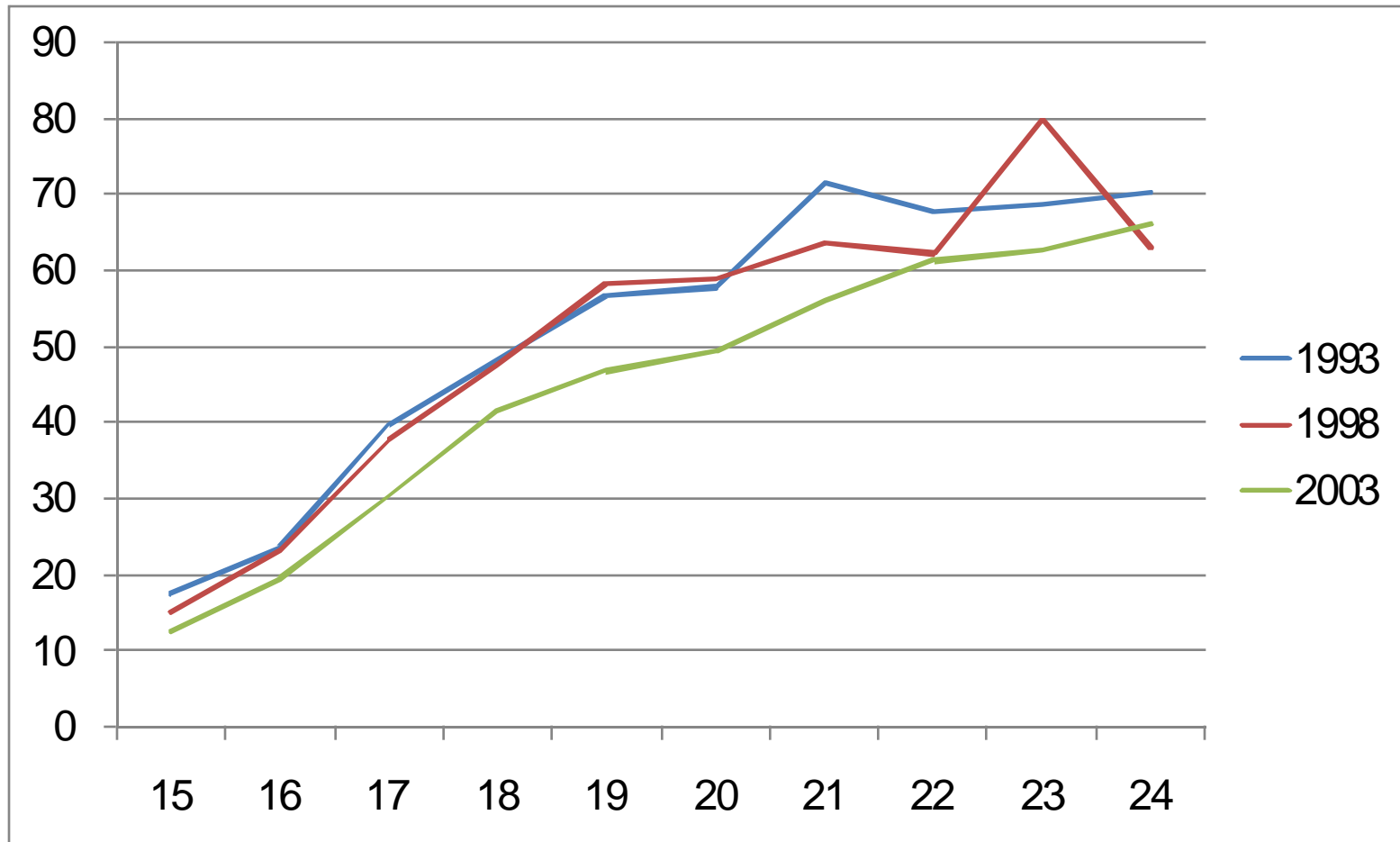


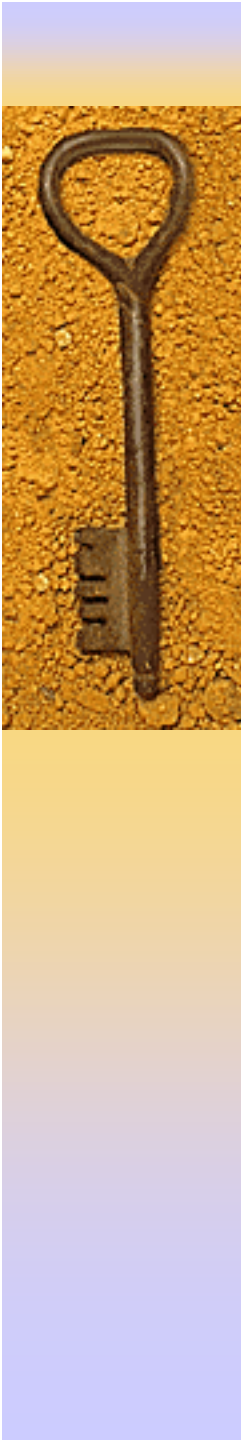
Premarital sex trends in 3 countries





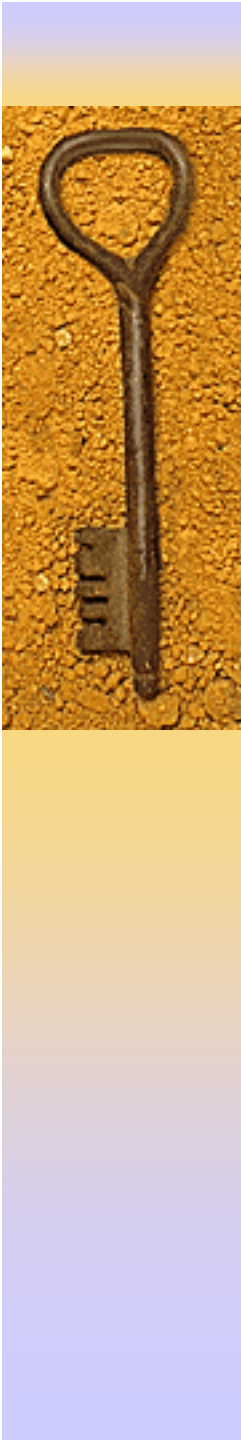
Premarital sex trends by age in Kenya



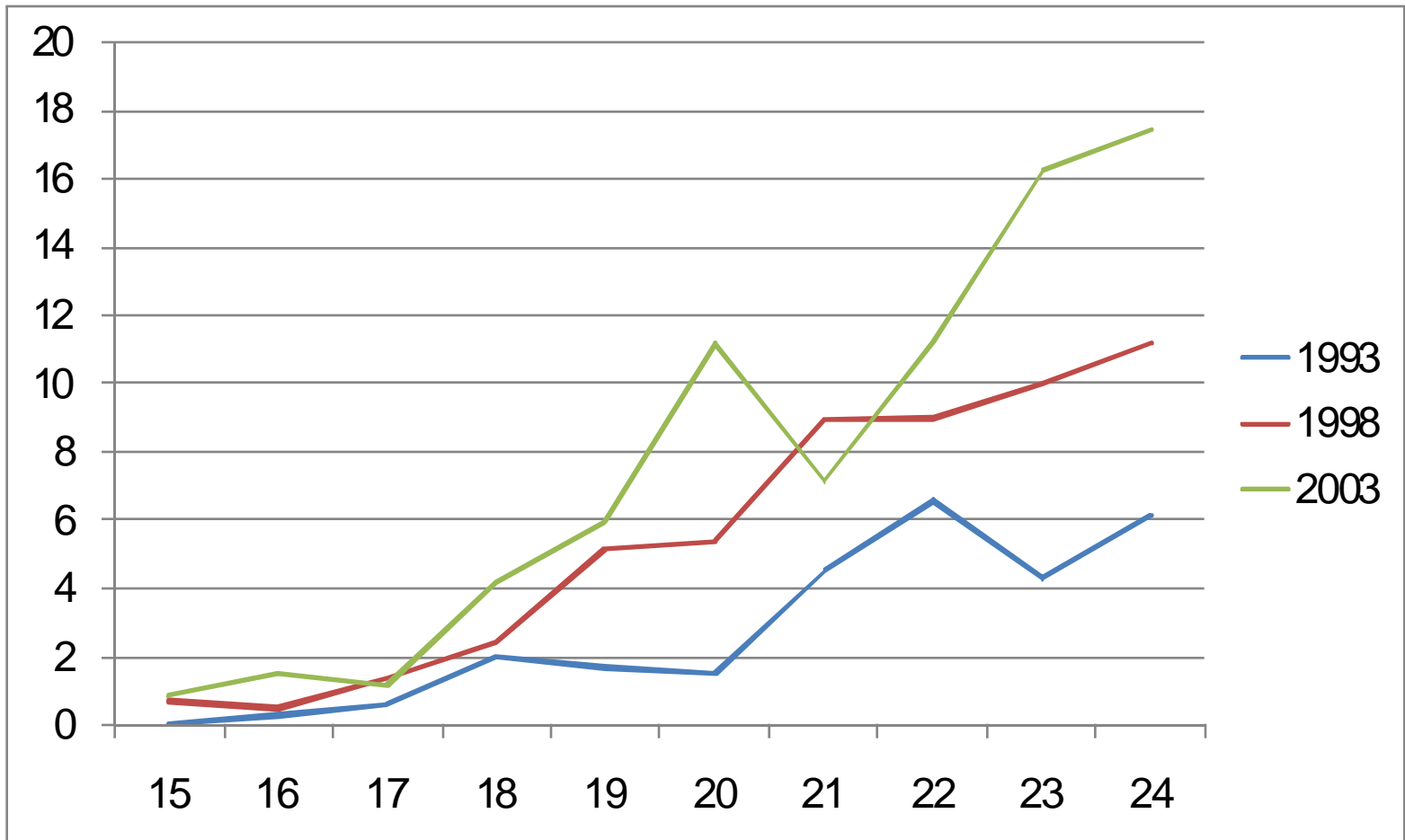


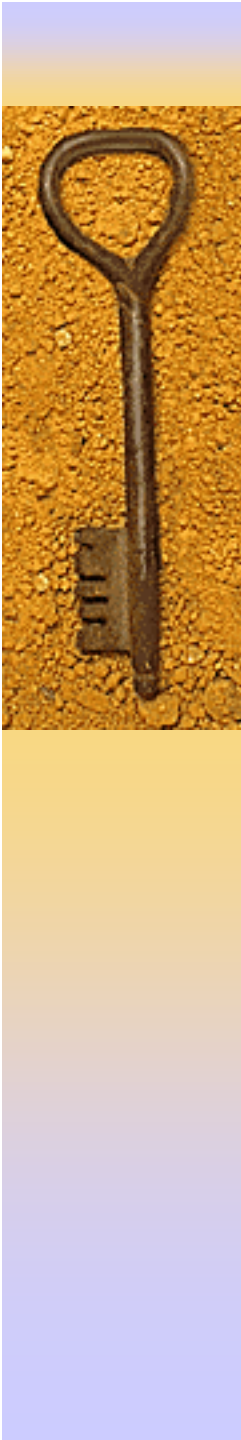
Premarital sex trends by age in Nigeria



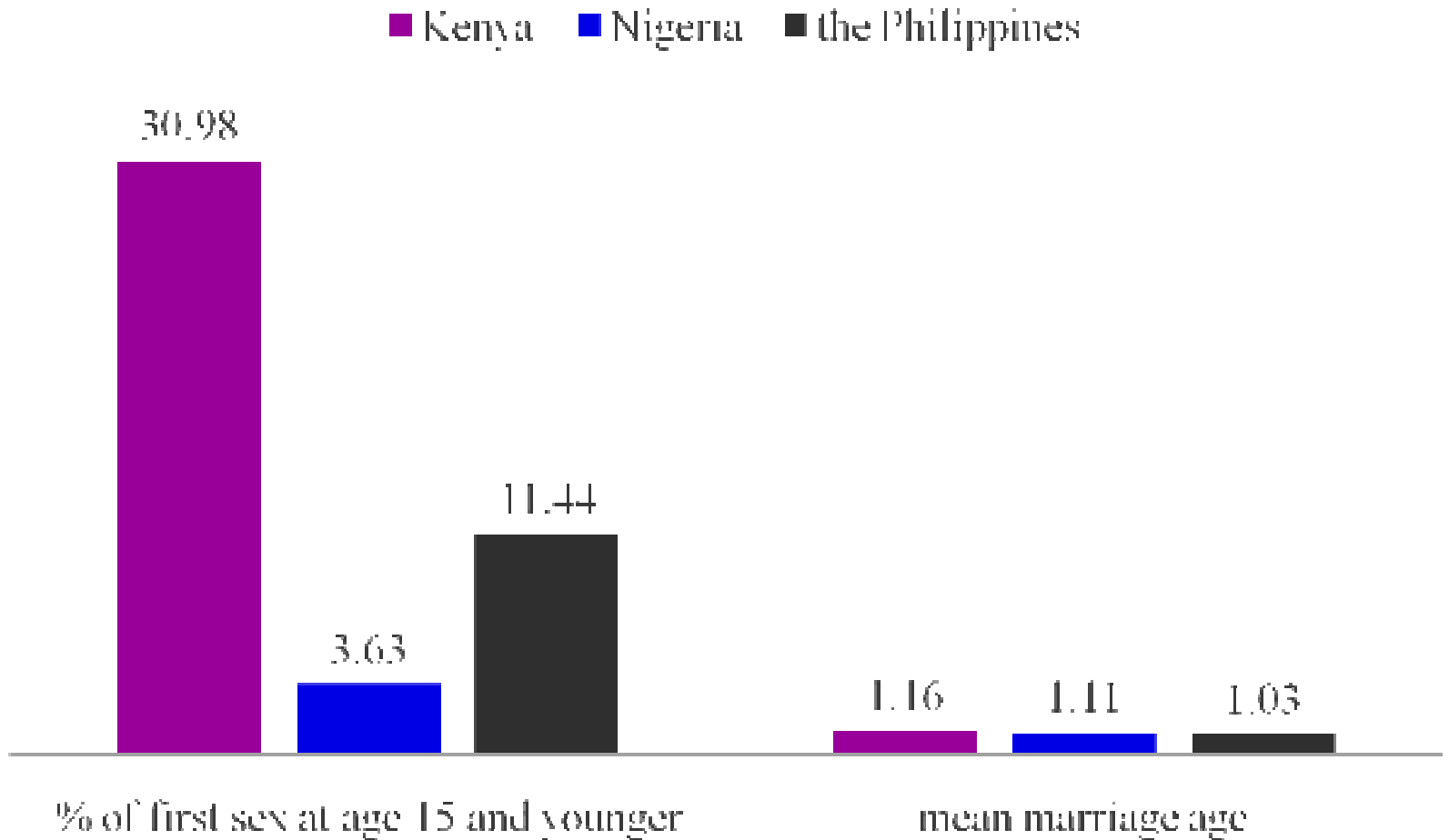


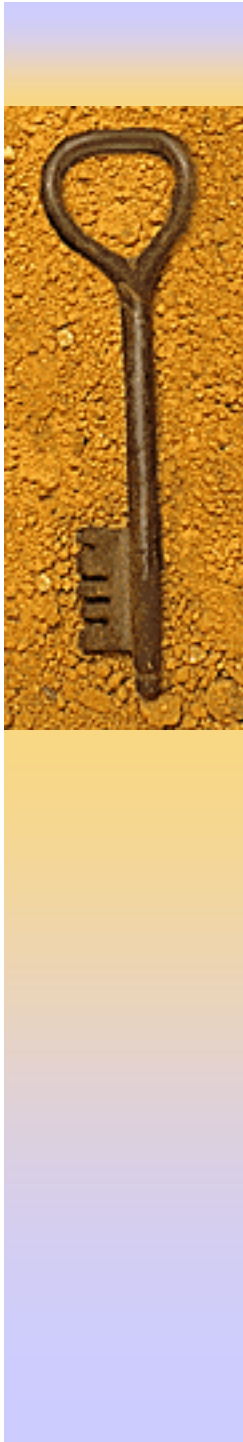
Premarital sex trends by age in the Philippines



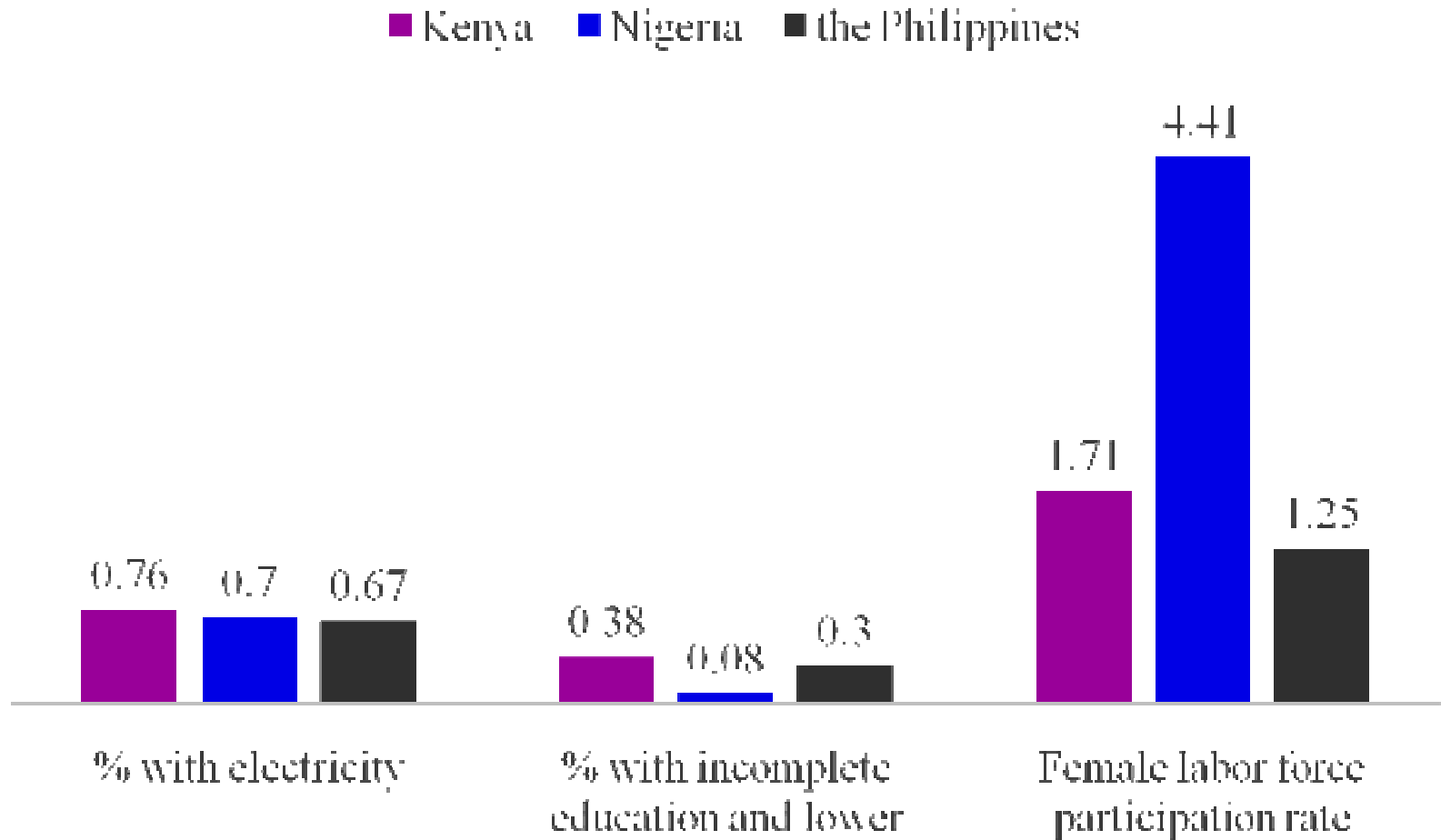


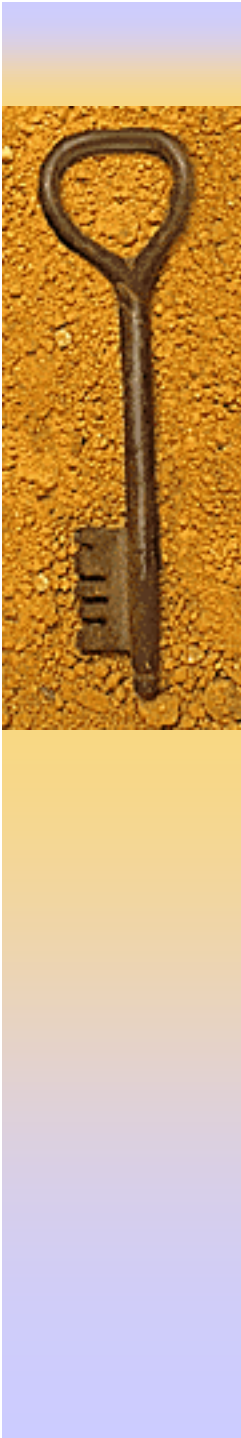
Influence of social norms on premarital sex





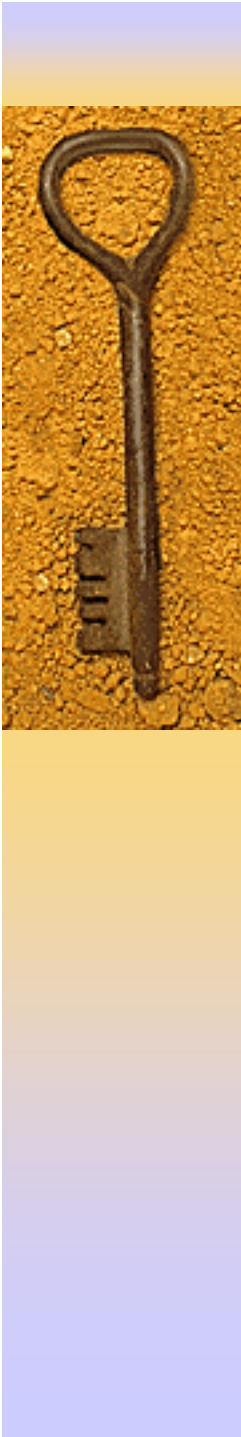
Community influence on premarital sex





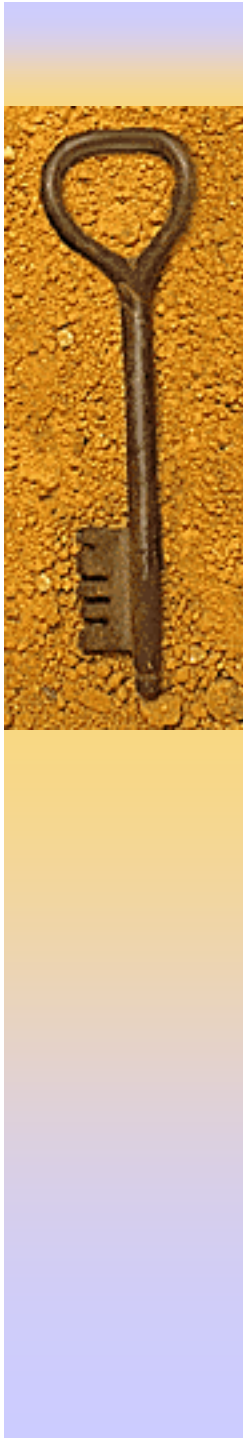
Summary

- ◆ Significant differentials in premarital sex trends across countries
- ◆ Contextual factors playing a significant role in these trends, even controlling for individual and household characteristics



Study limitations

- ◆ Challenged to create culturally- relevant measures of premarital sex using secondary data
- ◆ DHS may not be ideal source of information on social capital associated variables, particularly those regarding social networks
- ◆ May not completely capture the construct of “community” by using PSUs
- ◆ Multiple cross sections to establish the “order of events” at the country level, but these data limited to make causal inferences



Next steps

- ◆ The very rare study in Kenya, Nigeria, and the Philippines to examine how community-level factors affect premarital sex
- ◆ Inclusion of individual physical health and household variables
- ◆ Implications of this study potentially to improve HIV prevention efforts in three countries where female youth are diversely threatened by HIV/AIDS



Thank You!

Please send your inputs to
Chi Chiao
chichiao@mail.ncku.edu.tw