

Reducing access barriers through transportation innovations

Jeff Muschell, ME, MPH
The Children's Health Fund



Child Health Transportation Initiative (CHTI)

- **Three year project designed to address the health care access needs of transportation-disadvantaged children and their families**
- **Supported by the W.K. Kellogg Foundation and the Federal Transit Administration (FTA)**
- **Three components:**
 - **Research**
 - **Public education & advocacy**
 - **PILOT PROJECT DEVELOPMENT**



Problem statement

Lack of access to reliable transportation is one of the most pervasive barriers to health care for children in the United States

The result:

- **missed opportunities for immunizations and routine well-child care**
- **increased incidence of untreated chronic illnesses**
- **increased use of emergency rooms (and ambulances) for non-emergency care**
- **increase in preventable hospitalizations**

Acute problem in HPSAs and DHPsAs, as such areas are also likely to be transportation-disadvantaged



CHTI “working assumptions” for pilot projects

- **Additional investments in transportation resources for health care access are likely to be cost-beneficial or cost-effective**
- **Additional resources actually available for transportation are likely to be minimal**
- **Pilot project development should focus on solutions that increase EFFICIENCY and/or demonstrate COST-EFFECTIVE alternatives to existing practices**



Federal effort to coordinate transportation resources

- **Executive Order 13330 of Feb '04**
 - **Coordinating Committee on Access and Mobility (CCAM)**

An interagency group charged with integrating 62 separate federal human services transportation funding streams
- ***United We Ride* initiative, implemented by CTAA, working with states to develop coordinated transportation plans (collaborative process with state DOTs)**

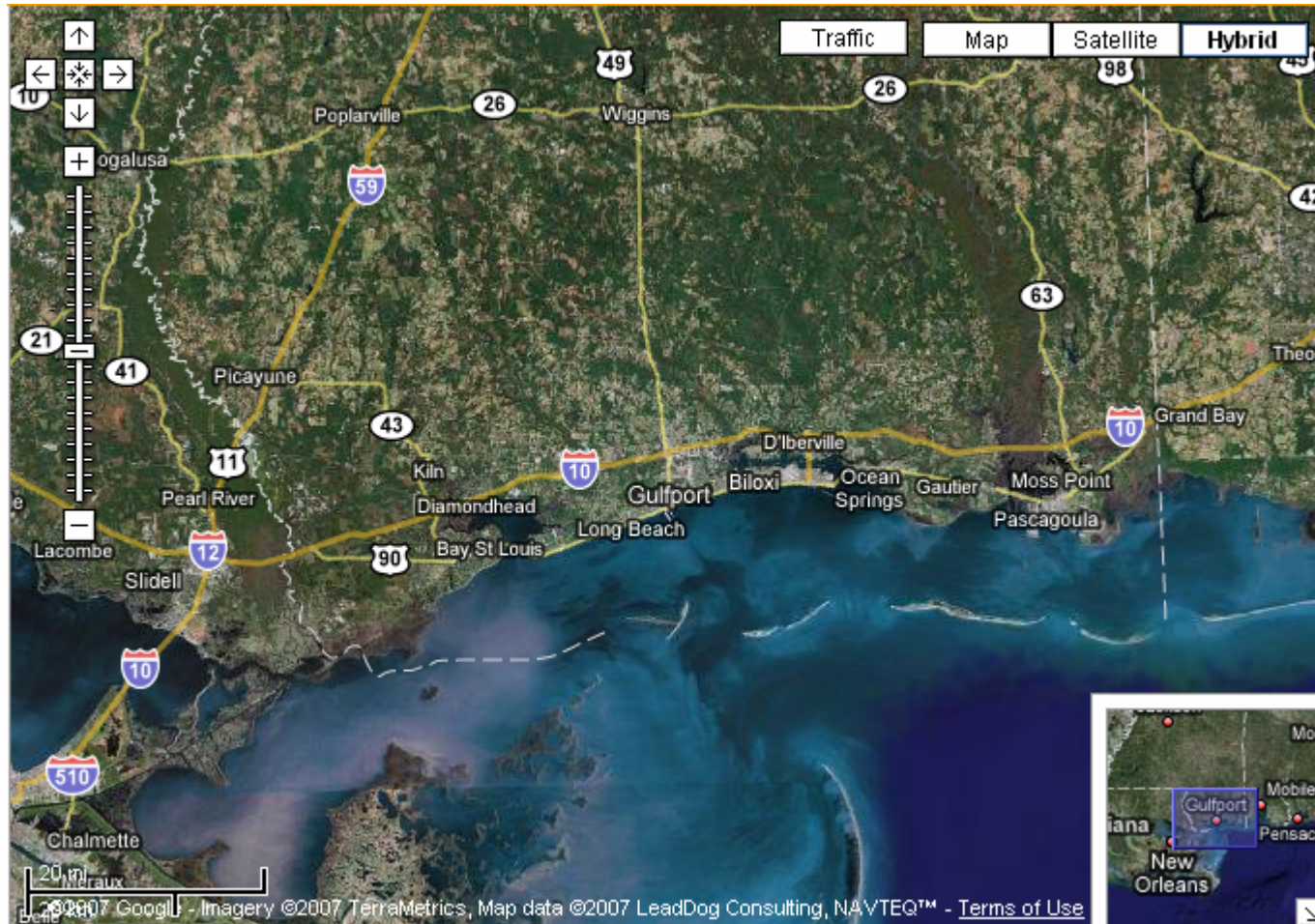


Overarching objectives for pilot projects

- **Identify and bring together local stakeholders in health and transportation sectors**
- **Initiate or enhance high-impact child health care transportation solutions**
- **Evaluate for potential applicability in other communities, in other states**



Gulf Coast region



Mississippi Gulf Coast Children's Health Project Gulfport & Biloxi, MS

Specific Objectives:

- **Increase health care access for populations displaced by Hurricane Katrina by offering transportation support**
- **Provide a means for displaced populations to gain access to other public services and employment opportunities**



Project characteristics: Gulfport & Biloxi

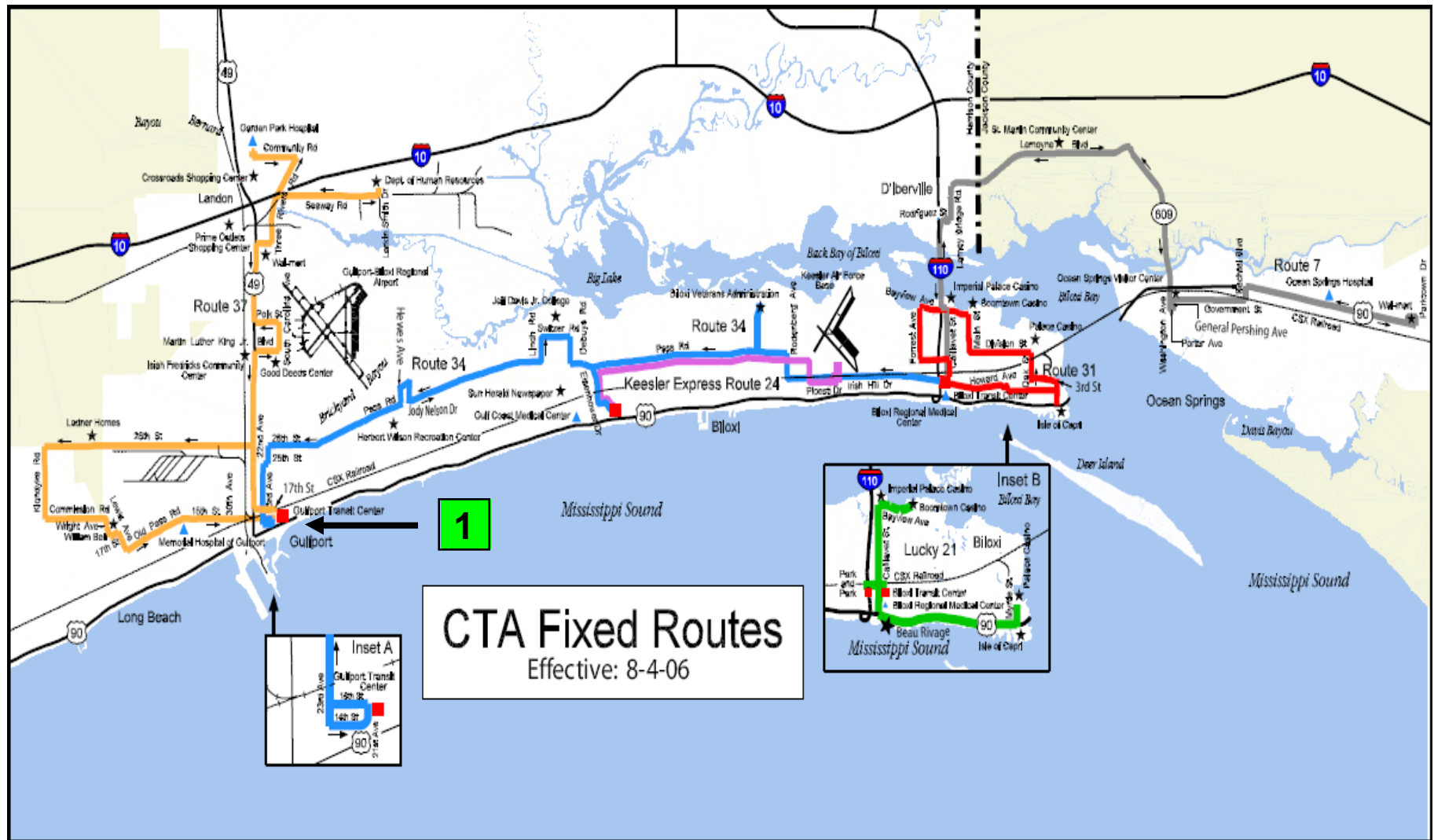
- **Establishment of “feeder route” running from large FEMA trailer park into Gulfport, using 15-passenger van supplied by the Coast Transit Authority**
- **Local stops at health care facilities, job center and shopping, plus linkage to fixed routes of Coast Transit Authority**



“Feeder Route” into Gulfport



Link to fixed routes of Coast Transit Authority



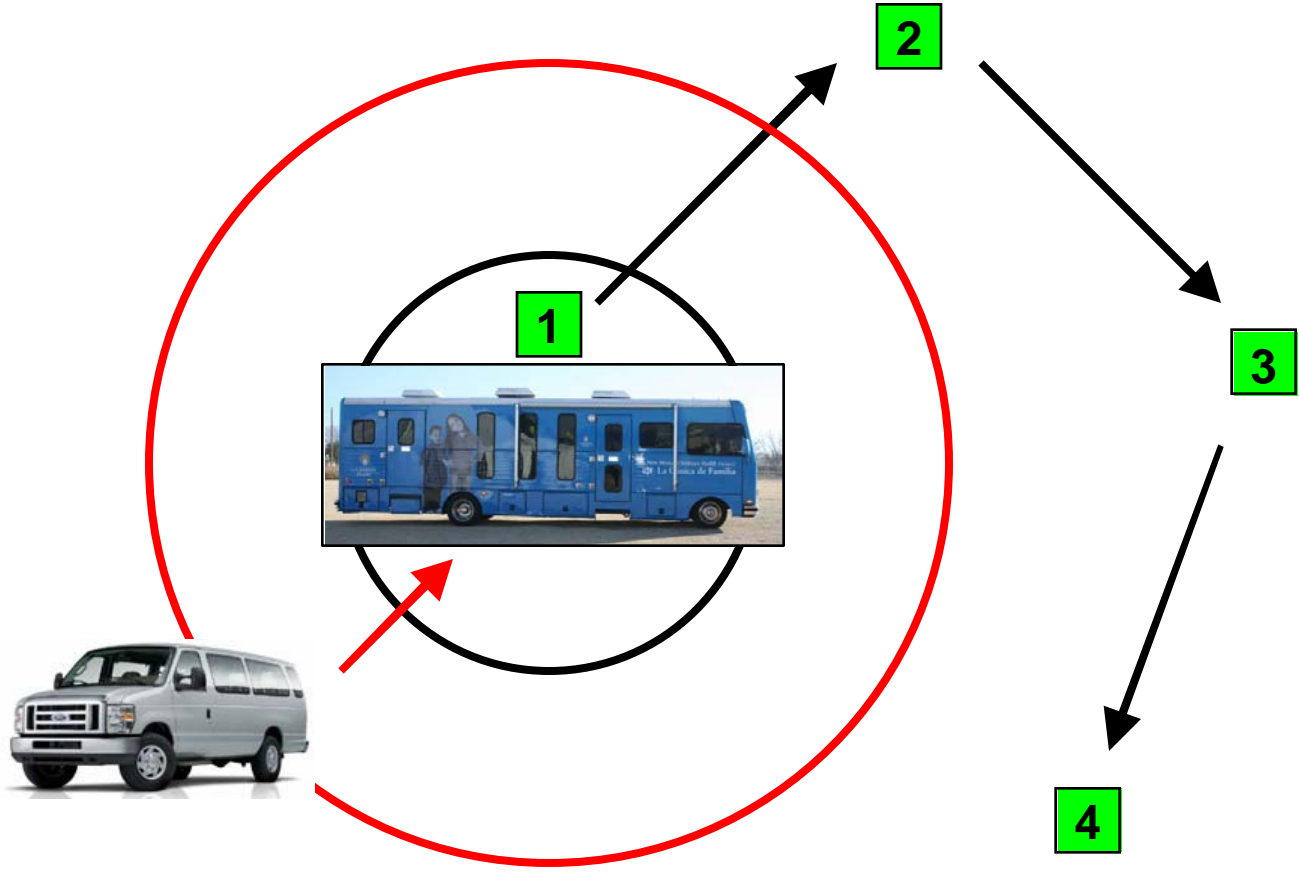
Interim outcomes: Gulf Coast project

- **Consolidation of other FEMA parks into Scenic Trails is not occurring; park population lower than when service was planned**
- **Ridership not sufficient to maintain thrice-weekly service**



New strategy: van will bring patients to MMU stops

Increase the radius of the MMU's (temporary) catchment area



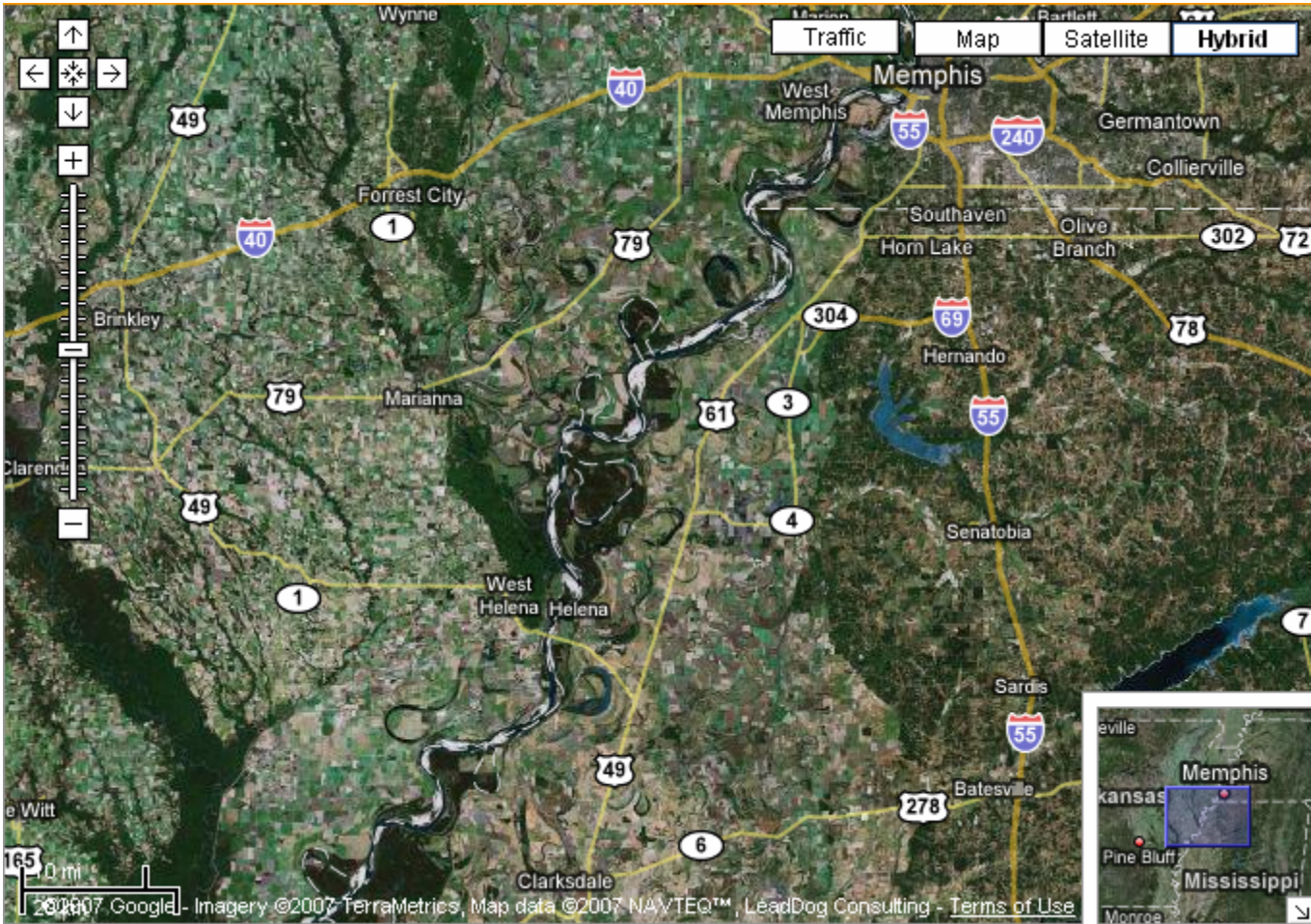
Indicators: Gulf Coast project

- **Pediatric patient/riders per time period**
- **Pediatric asthma patients presenting at MMU sites as a percentage of total pediatric patients using the service**

As logistics are worked out, van will continue to serve Scenic Trails as a demand-response service



Mississippi Delta region



Arkansas Children's Health Project Marianna, AR

Specific Objectives:

- **Strengthen management of clinic's transportation department**
- **Shift Medicaid NEMT-eligible patients over to local Medicaid transportation broker**
- **Improve health care access for pediatric patients who are transportation-disadvantaged**



Project characteristics: Marianna

- **Establish post of Transportation Coordinator**
- **New tools for transportation management & training (with inputs from CTA)**
- **Making use of waiver provision where feasible**
- **Hopefully, eventual negotiation with local Medicaid NEMT broker for a) sub-contracting Medicaid rides, b) fleet management support, or c) both**
- **“Kids’ van” for referral to Memphis and for sweeping in kids on “pediatrician day”**



Marianna project

Indicators:

- **Average monthly ridership; average monthly Medicaid ridership; average mileage per vehicle per month**
- **Absolute number of pediatric patients on “pediatrician day”; successfully completed pediatric specialty referrals**

Progress:

- **Site visits; tools developed; training with CTA consultant**
- **Initial meetings with state Medicaid Managed Care Services**



Mississippi Children's Health Project Clarksdale, MS

Specific Objectives:

- Reduce use of emergency room by patients presenting with non-emergency conditions
- Reduce preventable hospitalization and use of emergency transportation resulting from inability to access primary care



Project characteristics: Clarksdale

- **Survey of patients with non-emergency conditions presenting at Northwest Regional Medical Center emergency room**
- **Implementation of targeted solution(s) based on survey results, possibly involving:**
 - **Negotiation with local Primary Care Providers to offer extended clinic hours**
 - **Piloting of new CHF Transportation and Referral Management System (TRMS)**
 - **Establishment of new route within Delta Area Rural Transit System (DARTS) schedule**

Clarksdale project

Indicators:

- **Percentage of patients with non-emergency conditions presenting at the ER**
- **Absolute number of hospitalizations for children with asthma**

Progress:

- **ER survey will be conducted this month (November 2007)**



Second group of pilot sites

Memphis

- **New relationship with Le Bonheur Children's Hospital**

Nashville

- **New relationship with Vanderbilt University School of Nursing**

New Orleans

- **Availability of clinic bus will allow a duplication of the Gulf Coast "increased radius" strategy**

Colorado

- **Grant support to a new van service for health care access provided by the Local Health Initiative**



Contact Information

**Jeff Muschell, ME, MPH
The Children's Health Fund**

212-535-9400

jmuschell@chfund.org

