

---

# Research partnerships with community health centers: Collaborative approaches considered from a research ethics perspective

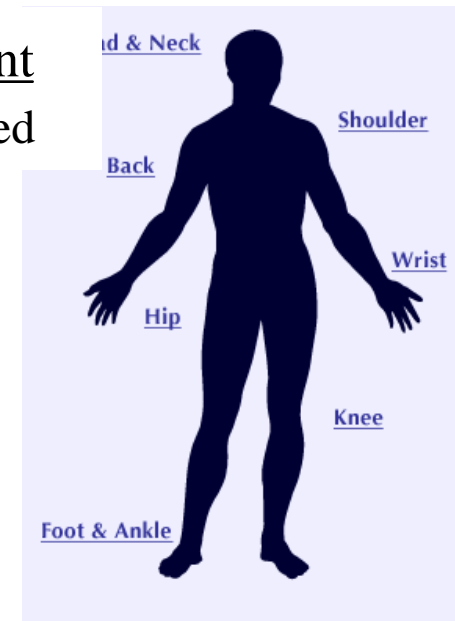
**Milton "Mickey" Eder, PhD**, Research Programs  
**Linda Diamond Shapiro, AM, MBA**, External Affairs  
135<sup>th</sup> Annual APHA Meeting, Washington DC  
November 5, 2007



---

# Concepts of Research Ethics

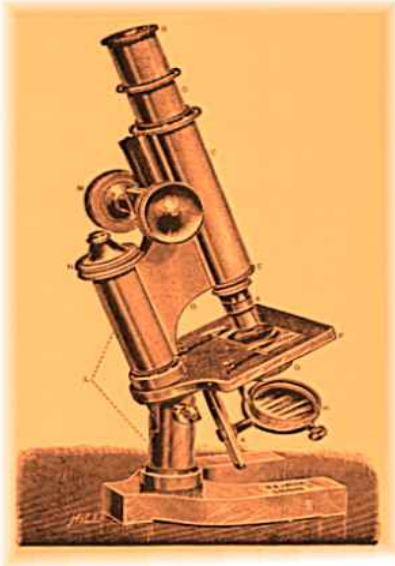
Consent  
Voluntary & Informed



---

# Concepts of Research Ethics

“Clinical Research” (Experimental conduct)



Begin with laboratory and animal experiments  
Scientifically qualified individuals  
Evaluate risks and benefits for subjects

Consent

Voluntary & Informed

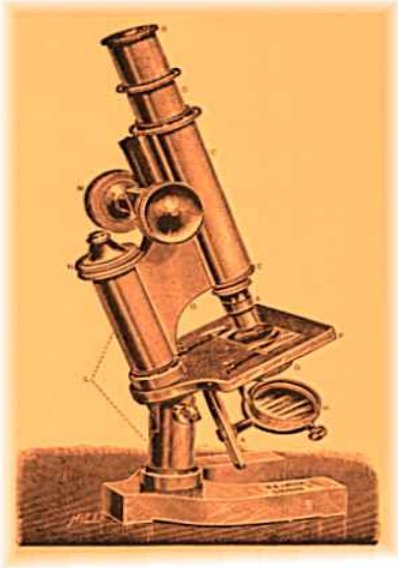


---

Images: [www.widenclinik.com/images/human\\_figure.gif](http://www.widenclinik.com/images/human_figure.gif); [www.oralpath.com/departments/microscope.jpg](http://www.oralpath.com/departments/microscope.jpg)

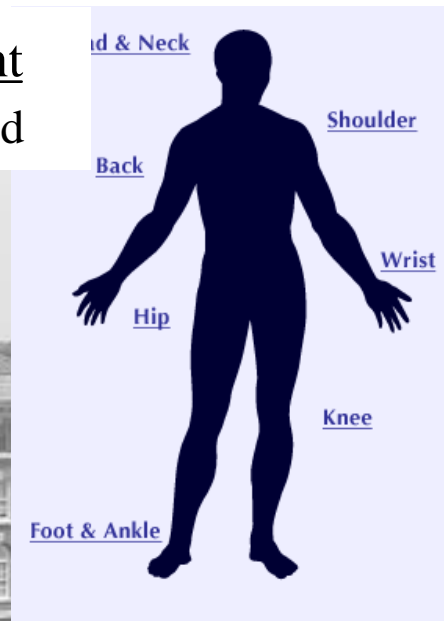
# Concepts of Research Ethics

“Clinical Research” (Experimental conduct)

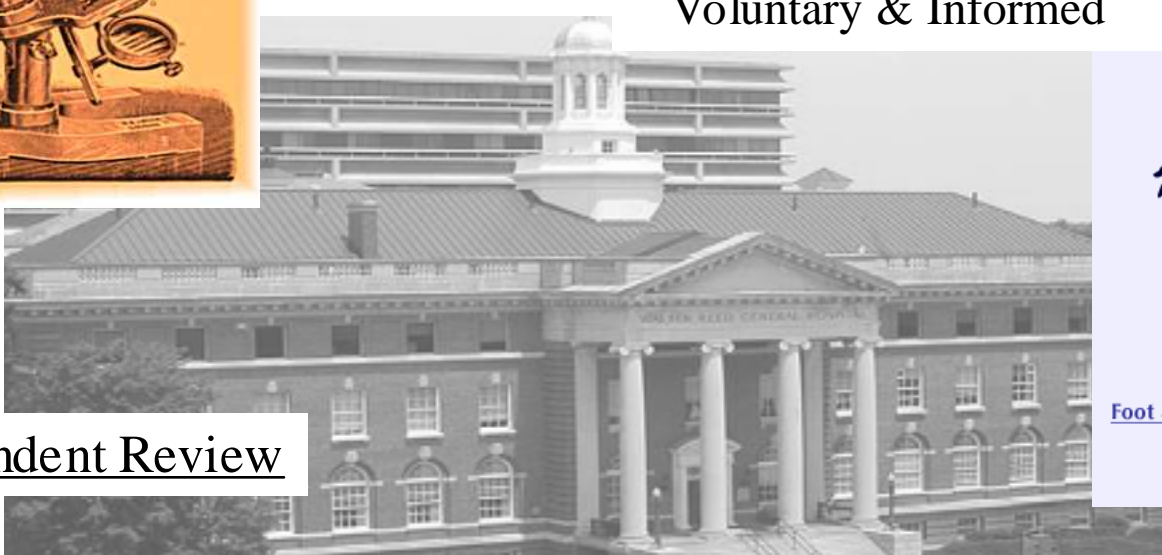


Begin with laboratory and animal experiments  
Scientifically qualified individuals  
Evaluate risks and benefits for subjects

Consent  
Voluntary & Informed



Independent Review



Images: [www.widenclic.com/images/human\\_figure.gif](http://www.widenclic.com/images/human_figure.gif) [www.oralpath.com/departments/microscope.jpg](http://www.oralpath.com/departments/microscope.jpg)  
[www.nlm.nih.gov/hmd/medtour/images/wreed.jpg](http://www.nlm.nih.gov/hmd/medtour/images/wreed.jpg)

---

# The NIH Clinical Research Enterprise

Clinical and Translational Science

Link academic health centers into a network

AHCs develop relationships with community  
partnerships



---

# Shared Interests in the Research Question

Research paradigms – top/down or bottom/up

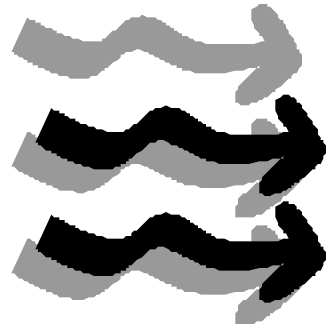
Contrasting missions, priorities and relationships

Talk, talk and talk some more ...proposal development, funding negotiation, IRB application , etc.



---

# Aligning research intent with the health center clinical and administrative practices:



Collaboration – to work with another or others to  
achieve a particular purpose

Engaged staff breaks down barriers for potential  
study participants

Make “informed consent” a process and not an event

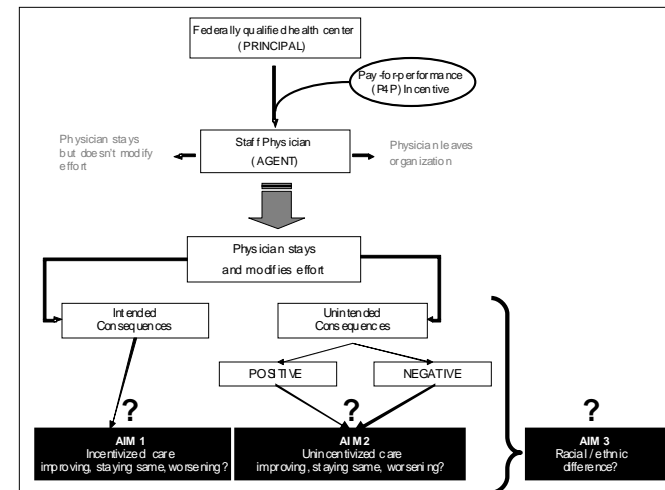


---

# Engaging health center staff in study design

Beyond power and recruitment

Verifying community resources and facilities for research within proposals





---

# Acknowledging full operational and research management costs

Non-existent or low indirect cost rate

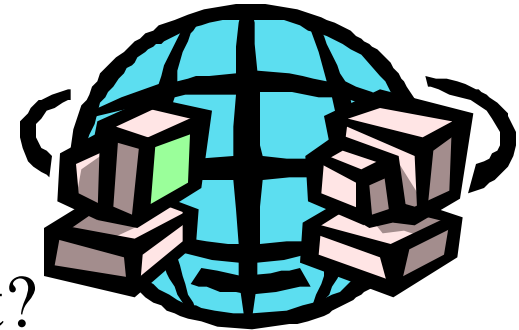
Will CTSA funds reach community partners?

Can we collect cost data for community oriented translational research?



---

# Clarity regarding the collection, storage and sharing of protected information



Who are we protecting and from what?

Protecting identities and personal information about human subjects has financial, technical and staffing components

---

# Strengthening the health center workforce to participate in research processes

Understand health center staff knowledge, attitudes and beliefs about research

Human subjects protection training – an inconvenient nuisance or the basis of trust?

Does translational research need ongoing research expertise **IN** the community?



---

# Health Center engagement: interpreting and disseminating results

What results matter for building translational research capacity? Number recruited, refused (reasons?), left and withdrawn; researcher response to unanticipated events

Community Translational Research – consider the person psycho-socially, behaviorally, culturally, linguistically, economically...



---

## ??? Ponderables ???

How do we define community?

Will translational research improve the capacity of community health centers to support research?

Will translational research contribute to the reduction of health disparities?

