

ROMANIAN FAMILY PLANNING NATIONAL PROGRAM: A PARTNER-COORDINATED EFFORT

Patricia Mihaescu, MSc.



USAID
FROM THE AMERICAN PEOPLE

**Romanian Family
Health Initiative**





Pop: 22 mil. 51,2% urban

Literacy rate: 97%

Fertility rate: 1,3

Maternal mortality 2004: 24‰

abortion related: 12‰

obstetrical risks: 12‰

Abortion rate (number of abortion/woman/lifetime):

1993 - 3.4

1999 - 2.2

2004 - 0.84

Contraceptive Prevalence Rate (women in union):

total (%) / rural (%)

1993 - 13.9 / 9.4

1999 - 29.5 / 20.9

2004 - 38.2 / 33

Poverty level: 41%

Source of data:
Romanian National Center of Statistics
2004 Romanian Reproductive Health Survey
Ministry of Health / Center of Health Statistics



USAID
FROM THE AMERICAN PEOPLE

Romanian Family
Health Initiative



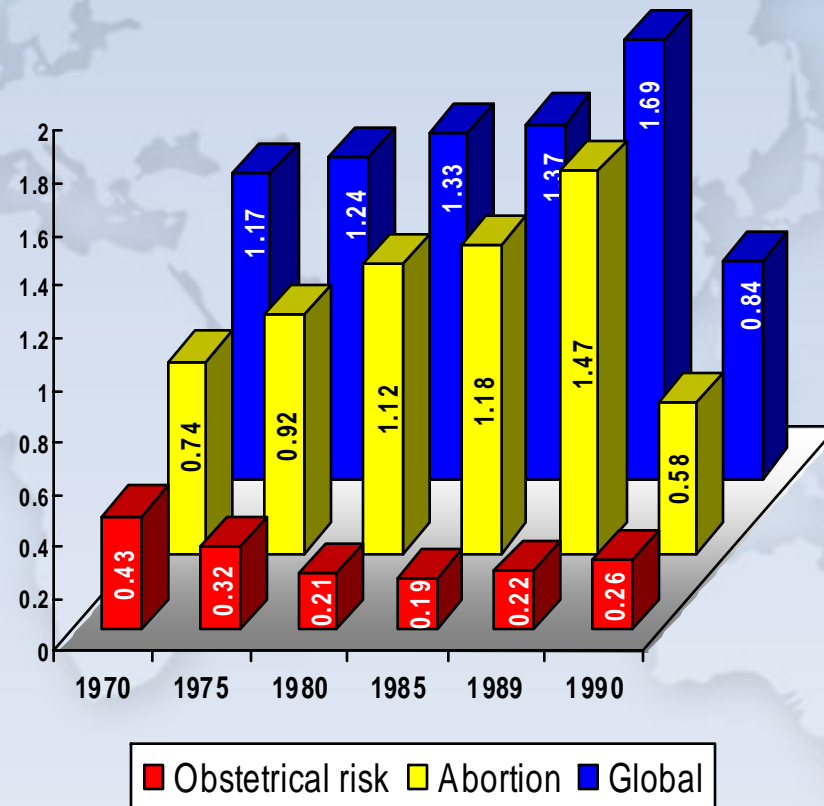
Background

Before 1990

- abortion and contraception illegal
- high maternal mortality rates

Early '90s

- low number of FP services providers
- 2.2 abortions per woman (1999 RRHS)
- only 23.3% women (15-44 y.o.) using modern contraception (1999 RRHS)



Rates per 1,000 live births



USAID
FROM THE AMERICAN PEOPLE

Romanian Family
Health Initiative



Data source: Ministry of Health,
National Institute of Health and Medical Statistics

Romanian Family Health Initiative

- Started in August 2001 and will end in December 2007
- Based on a Partnership Convention between MOPH, USAID and JSI Research & Training Institute
- Funding source: USAID
- Components
 - FP, prenatal
 - Avian Influenza
 - AIDS, sustainability
- RFHI has supported the

Romanian National Family Planning Program



USAID
FROM THE AMERICAN PEOPLE

Romanian Family
Health Initiative



The National Family Planning (FP) Program

- “Three pillars” approach:
 1. train providers;
 2. IEC/BCC activities
 3. free contraceptives (LMIS)



- Efficient through its demonstrated results
- Known and appreciated internationally
- Result of collaboration between government, international agencies (USAID, UNFPA, JSI R&T) and NGOs (SECS)



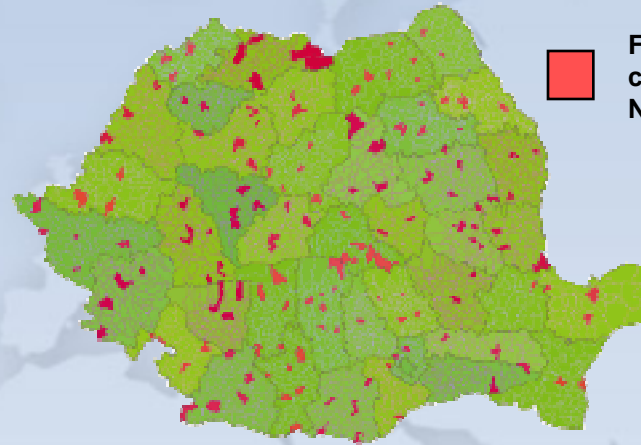
USAID
FROM THE AMERICAN PEOPLE

Romanian Family
Health Initiative



Results from Romania

- Increased access to family planning services
 - 80% rural communities with trained FP providers by December 2006.



FP cabinets in ~200 cities
No rural coverage



80% rural coverage



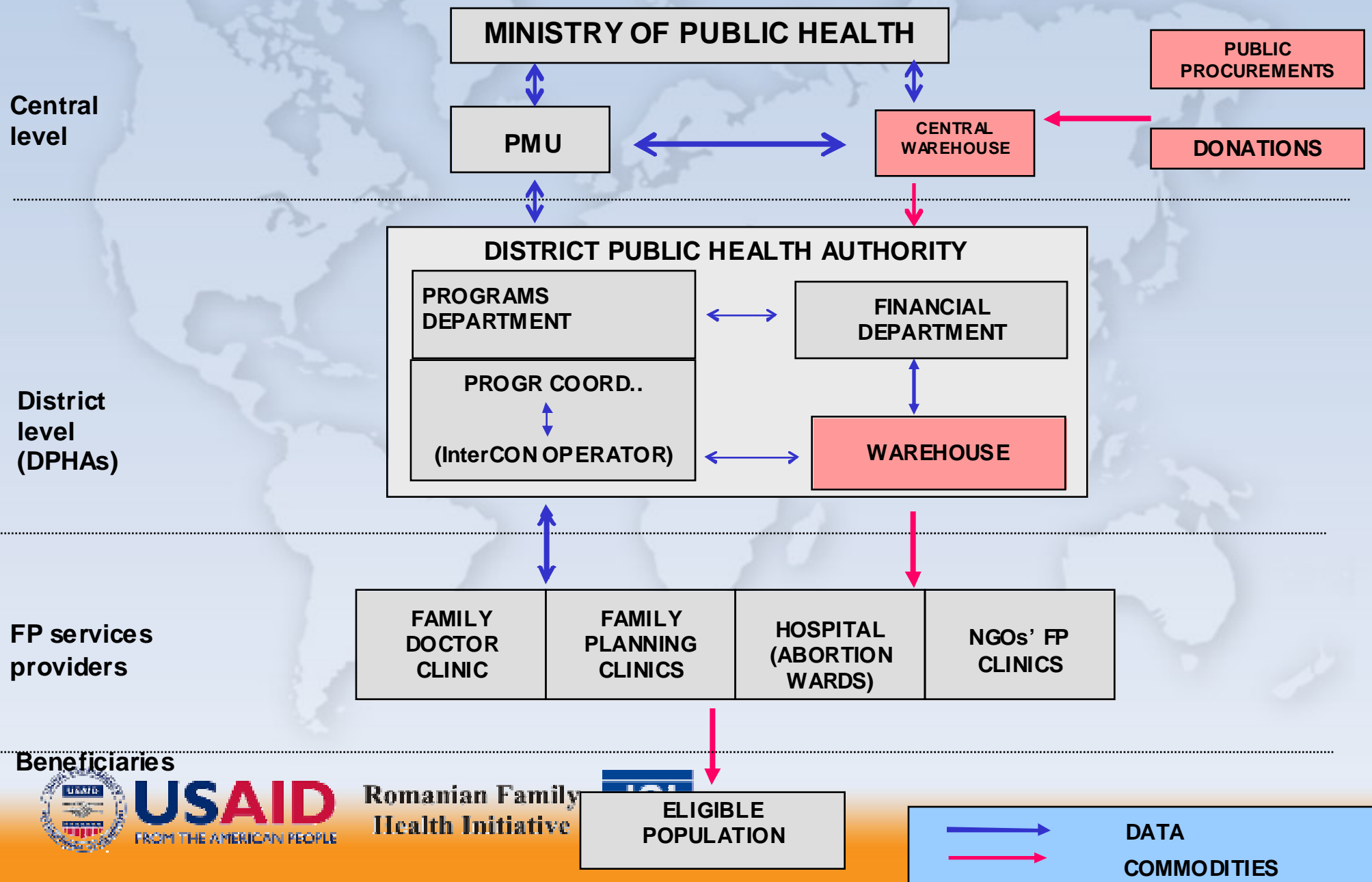
USAID
FROM THE AMERICAN PEOPLE

Romanian Family
Health Initiative



Data sources: SECS training database, SIRUTA 2005/ NIS
Software: ArcView 9.1/ESRI Romania

The Romanian LMIS for contraceptives



The Romanian LMIS for contraceptives

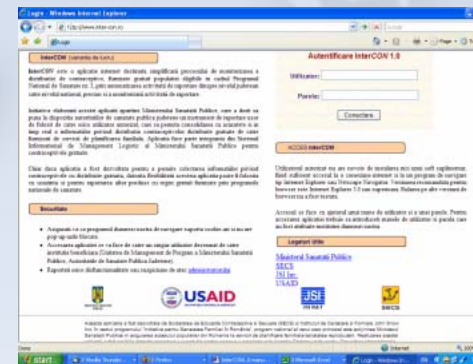
History - products

- 2001-2002 – UNFPA and USAID's contraceptive donations
- 2002→2007 – yearly public contraceptive procurements

History - data

- Providers' level:
 - 2001-2002: paper-based LMIS reporting forms, simplified in 2006
- District and national level:
 - from 2003: spreadsheet-based data consolidating tool, revised in 2004
 - 2006: web-based monitoring and data consolidating tool InterCON1.0
- All three levels:
 - LMIS Procedures Guide

Unitate/Cabinet:	Luna: April 2009									
	ODOC		POP		Speridula		Fisc		Altele	
A Distribuirea contraceptivului										
B Validarea de incalzire										
C Stoc in intercalul lunar										
D Inchisura in cursul lunar										
E Distribuirea in cursul lunar de catre cabinet										
F Perisabilitati / Agrement de stoc (+/-)										
G Stoc in intercalul lunar										



www.inter-con.ro



USAID
FROM THE AMERICAN PEOPLE

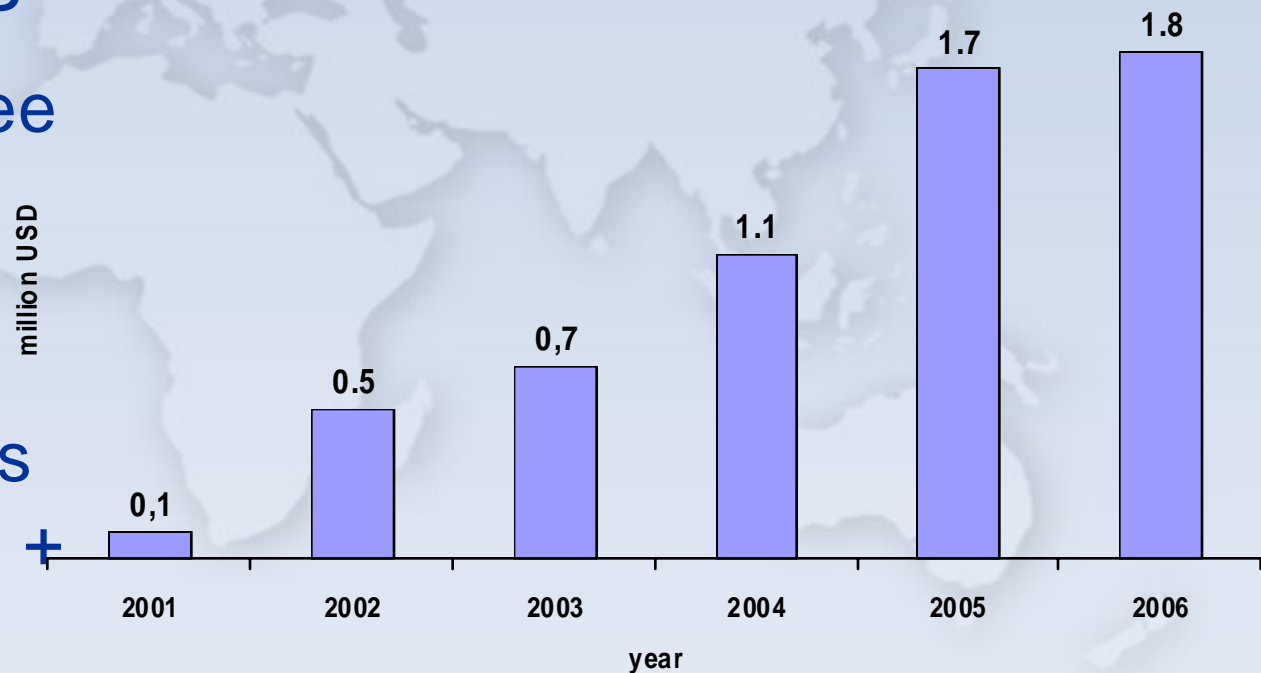
Romanian Family
Health Initiative



Results from Romania

- Increased resources within the health system allotted for FP
 - MOH allocations (free contraceptives procurements, etc.)
 - NHIH framework contract: FP services reimbursed (insured + uninsured)

MOPH budget allocated for the procurement and management of contraceptives supplies



USAID
FROM THE AMERICAN PEOPLE

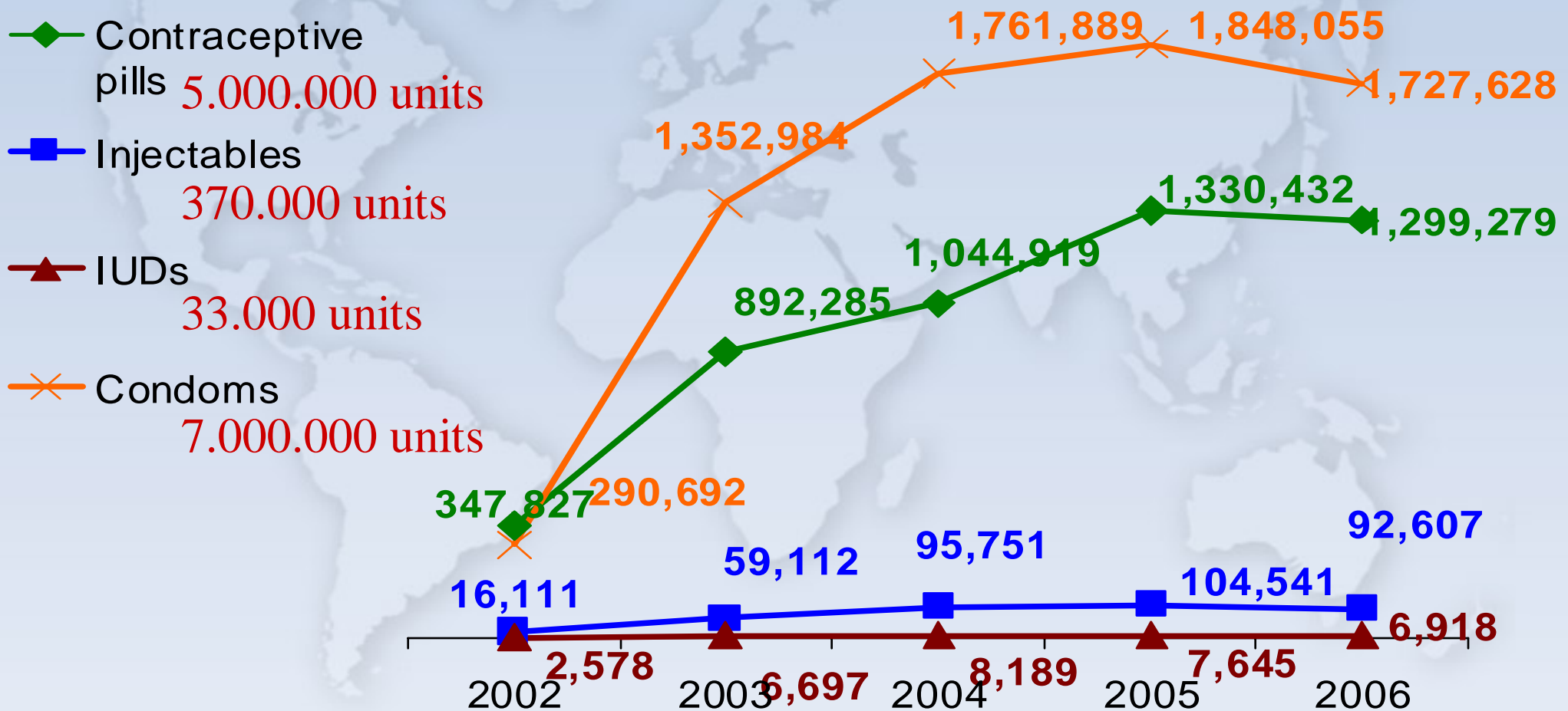
Romanian Family
Health Initiative



Data source: MOPH 2001-2006
Software: MSOffice Excel

Results from Romania

Total number of contraceptive units dispensed under the National FP Program, 2002-2006



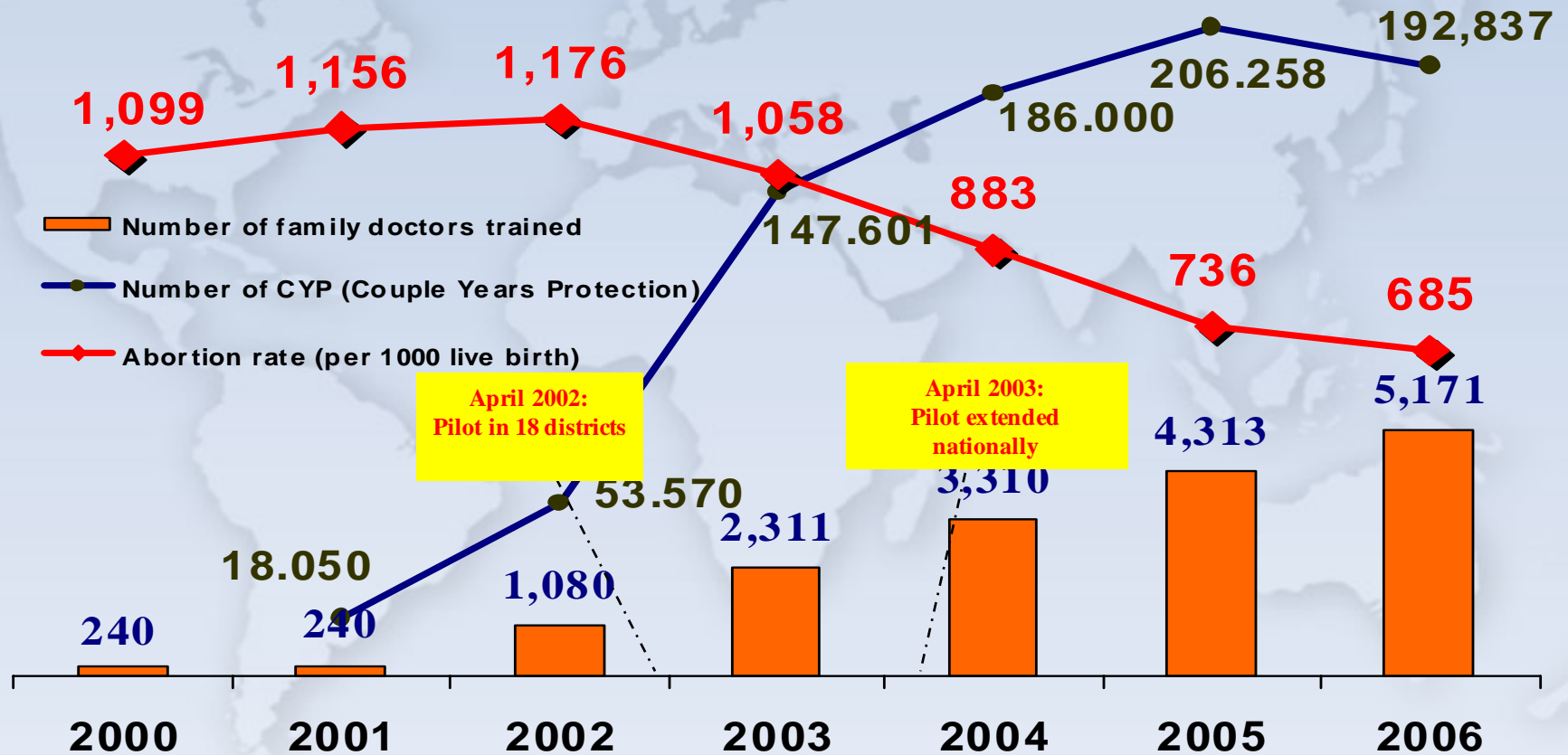
Romanian Family Health Initiative



Source: SECS training database and MOPH database
Software: MS Office Excel

Results from Romania

Evolution of number of FP providers, abortion rate and CYP



USAID
FROM THE AMERICAN PEOPLE

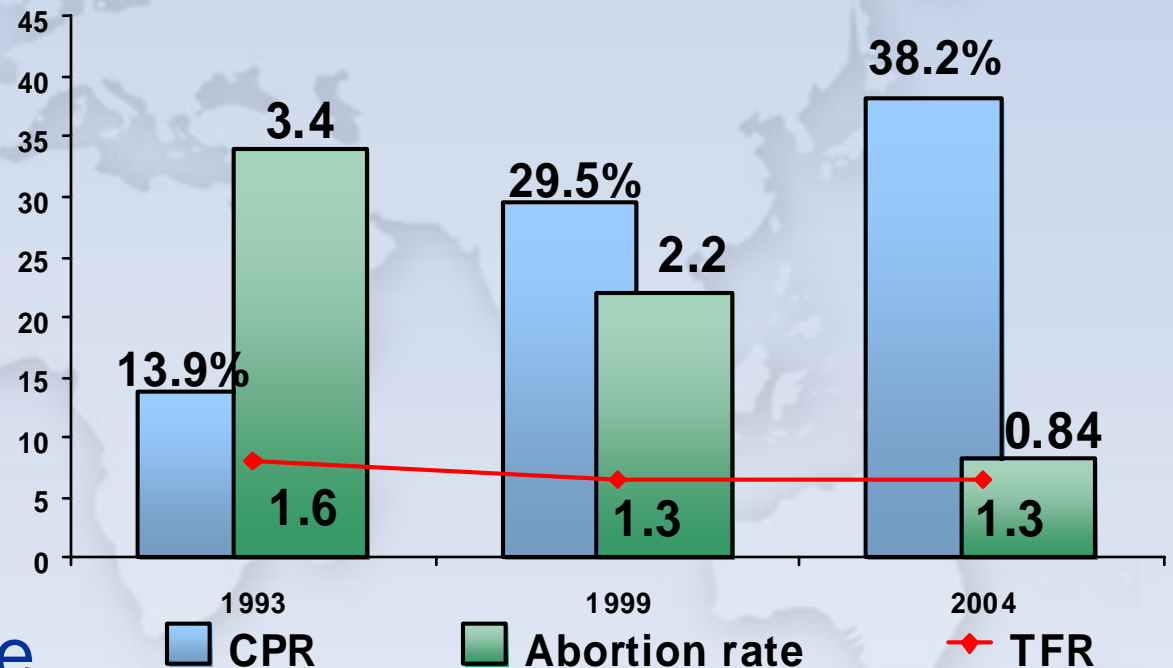
Romanian Family
Health Initiative



Source of data: SECS training database, LMIS DSP-uri+UMP
Software: MS Office Excel

Results from Romania

- Increased use of modern contraceptives (CPR in WRA in couples)
- Decreased abortion rate



USAID
FROM THE AMERICAN PEOPLE

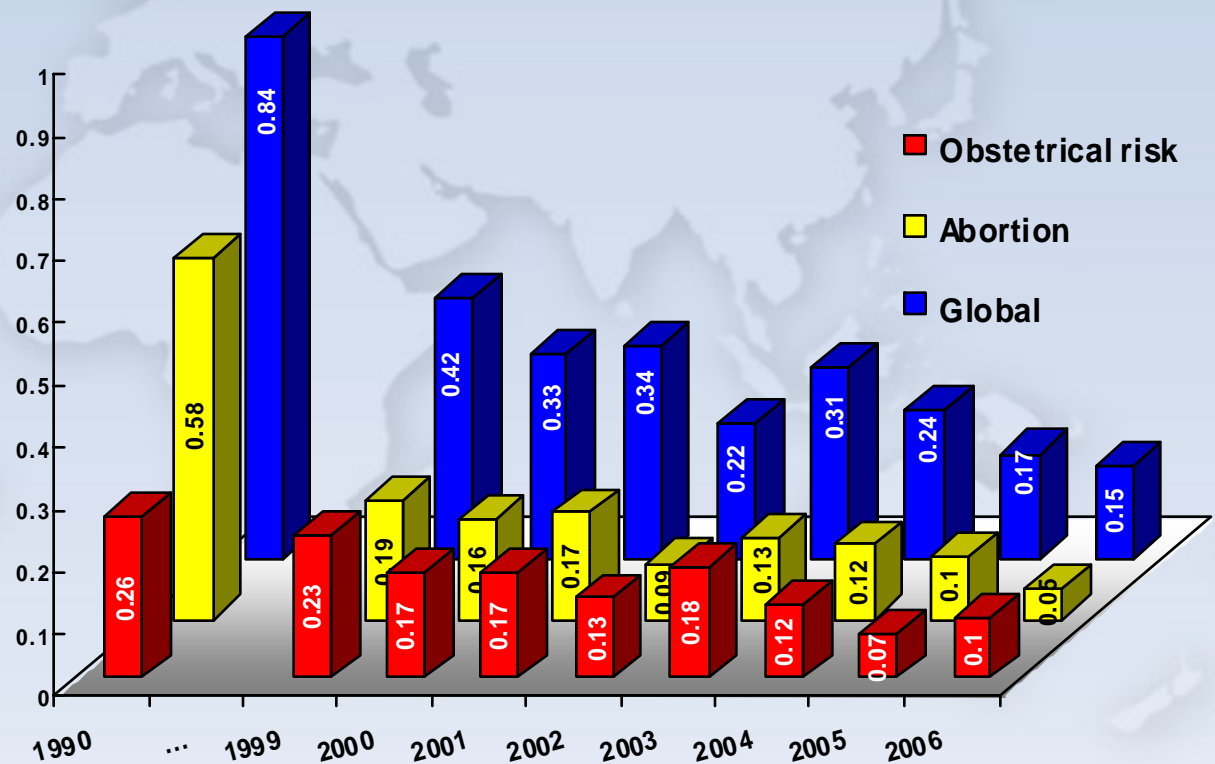
Romanian Family
Health Initiative



Source— Reproductive Health Surveys 1993, 1999, 2004; MOH

Results from Romania

- By 2005, Romania exceeded its MDG Objective 5/Target 12 (75% MMR reduction)



Romanian Family Health Initiative



Rates per 1,000 live births

Data sources: Ministry of Public Health, Institute of Health and Medical Statistics

Leaving a Legacy

- Strategy-based program design and implementation
- Increased management capacity (national & local)
- Partnership MOPH – NGOs
- Broad pool of trained providers, training capacity, training materials
- User-friendly, efficient LMIS
- BCC know-how, increased demand for quality FP services



USAID
FROM THE AMERICAN PEOPLE

Romanian Family
Health Initiative





Thank you!



USAID
FROM THE AMERICAN PEOPLE

**Romanian Family
Health Initiative**

