

# JUST-IN-CASE Training for a Public Health Emergency



Pharmacy, Social Work, Nursing  
University of Texas at Austin  
2007

# Content

- How did our initiative evolve?
- Segments of actual training
- Collaborative strategies
- Challenges with multiple key players
- Ability to replicate in your locale

# Training Topics

- UT has a disaster plan!
- We have to understand it!
  - Disaster Basics 101
- We need to form partnerships:
  - City of Austin and the University of Texas
  - Nursing, Pharmacy, Social Work
- School of Nursing will share its work:
  - Disaster Mobilization Plan template
- We should have some skills.

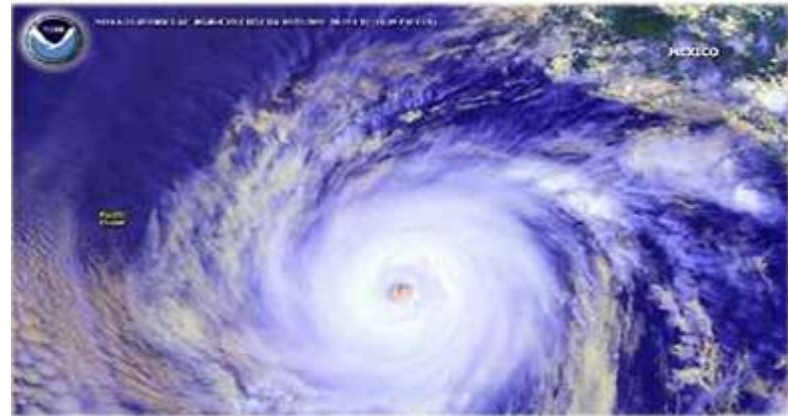
# The University has a disaster response plan.



- Emergency Management Plan
- Hurricane Plan Considerations for Mass Sheltering
- Pandemic Flu Plan

# Types of Disasters

- **Natural**
  - **With warning**
  - **Without warning**
- **Man-made**
  - **Unintentional**
  - **Intentional**
    - **Criminal**
    - **Terrorism**
    - **Weapons of Mass Destruction**



# Emergency Management System

- National Incident Management System (NIMS) - A federal response plan, Presidential declaration in response to state and local requests.
- Incident Command System (ICS)



# **Memorandum of Cooperation:**

## **UT & City of Austin**

- **Collaborative Agreement**  
↓
- **In public health emergency, City of Austin will take the lead**  
↓
- **President of UT & Campus Safety & Security**  
↓
- **Deans for Schools will be contacted**  
↓
- **Disaster Mobilization Plan of the Schools may be deployed**

# School of Nursing Template

- Committee Structure
- Disaster Mobilization Plan
- Call-up Process





# Your expected role: Prevention of Disease



- **Assist in disease surveillance**
- **Distribute public stocks of drugs and vaccines**
- **Prevent local disease transmission using containment strategies**
- **Prepare educational campaigns to reduce disease spread**

# Your expected role: Mass Sheltering



- **Minor first aid and psychological first aid**
- **Basic screening triage (vitals, medical history, chief complaints, some specialized care)**
- **Special needs: morbidly obese, infants, cognitively impaired**
- **Immunization services**

# Your expected role: Specialty Shelter Care



- Special or vulnerable populations
- Agreement between City of Austin and City of Galveston
- City will set up special needs shelter

# Your expected role: Triage

- **A process to prioritize the management of multiple patients with injuries**
- **Principles include: ABCDEs of care**
  - A = airway**
  - B = breathing**
  - C = circulation**
  - D = disability (mental status)**
  - E = exposure (what happened?)**



# Thank You!

- UT Disaster Plan
- Disaster Basics
  - know who is in charge
  - know what you don't know
- Get organized
- Sign up for more training
- Questions?

# Collaborative Strategies

- **Coordination with Pharmacy and Social Work at UT**
- **University Health Services**
- **“Testing” with City of Austin- hurricane season**



# Challenges with Multiple Key Players



- **UT experience**
- **Competing priorities**
- **Politics**

# Ability to replicate in your locale



- **Who to contact?**
- **How to initiate?**
- **Who should be involved?**
- **What formal steps are needed?**



# Contact Information

- Trish O'Day, MSN, RN, CNS
- University of Texas at Austin
- Clinical Instructor, Public Health Nursing
- [today@mail.nur.utexas.edu](mailto:today@mail.nur.utexas.edu)
- [Disaster Preparedness | The University of Texas at Austin | School of Nursing](#)