

Strategies for Improving Transportation Access for Children's Health Services In Rural Communities

Mark Burton

Center for Transportation Research

November 2007



Discussion Overview

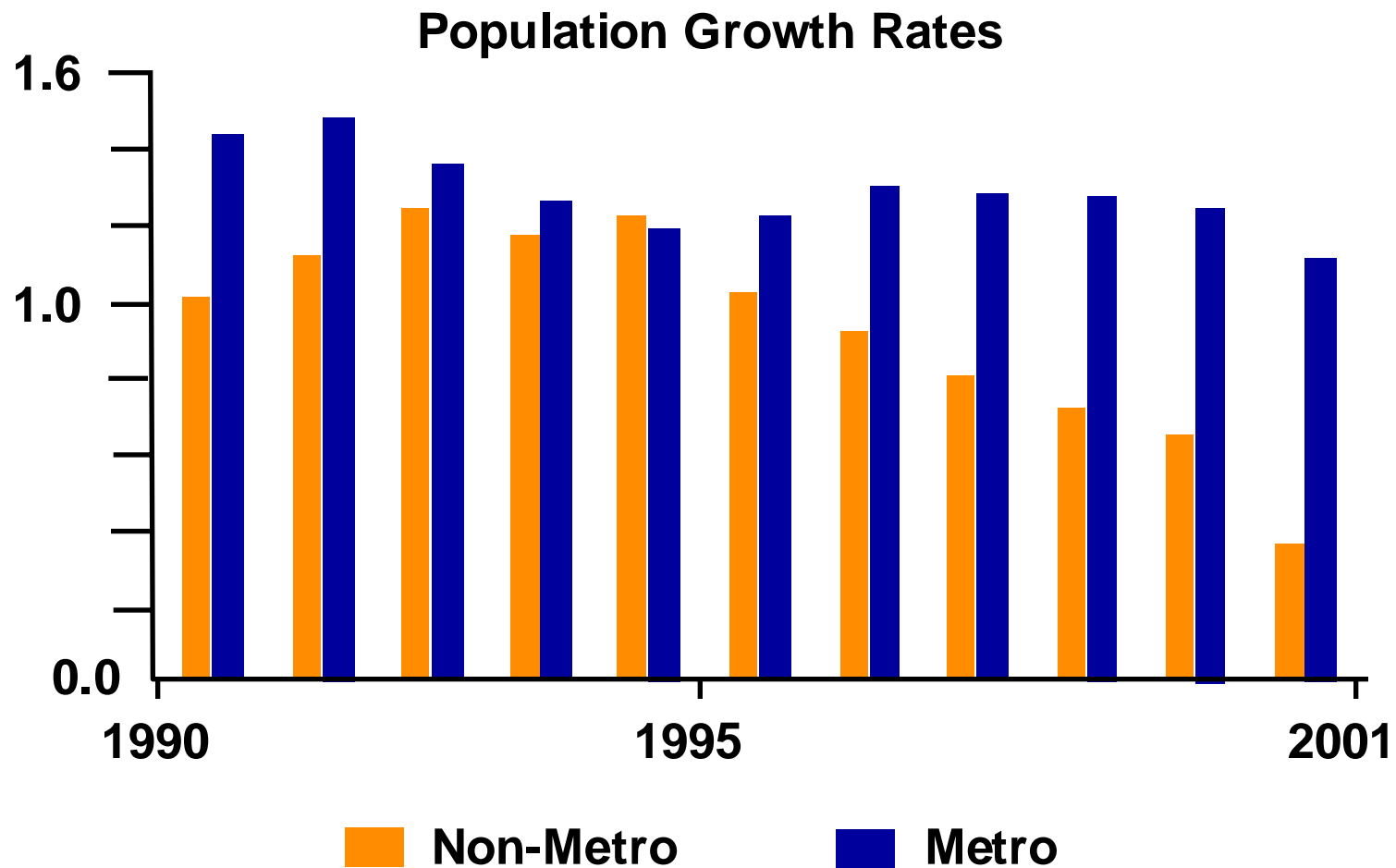
- ▶ Rural Context
- ▶ What's At Stake
- ▶ The Fundamental Problem
- ▶ Potential Strategies
- ▶ Implementation Issues



Rural Context

	Non-Metro	Metro
Average Annual Earnings	26,468	39,907
Median Household Income	33,601	45,219
Per Capita Income	17,884	24,069
Poverty Rate	14.2%	11.1%

Rural Context



Rural Economic Challenges

- ▶ **Farming and Manufacturing Employment Continues to Decline**
- ▶ **Public Services Are More Expensive to Provide**
- ▶ **Quantity and Quality of Workers Is Limited**
- ▶ **(Sometimes) Rugged Terrain**



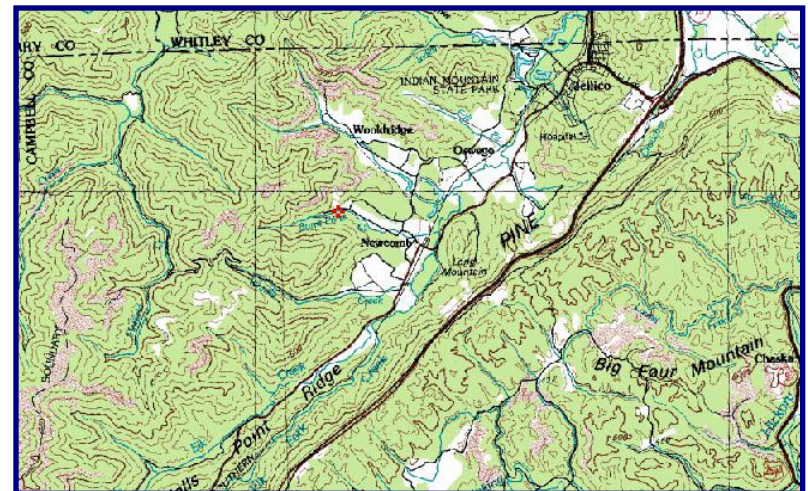
Gains From Improved Access

- ▶ Parental Job Performance
- ▶ Employer Productivity
- ▶ Children's School Performance
- ▶ Future Workforce Performance



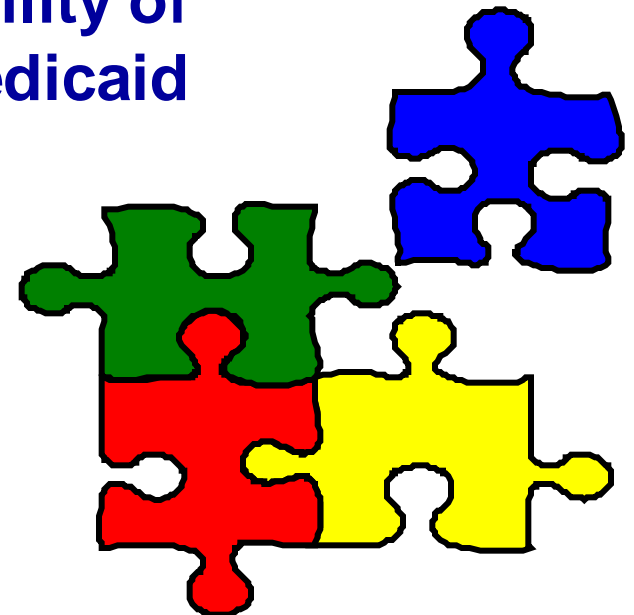
The Transport Problem

- ▶ **Vehicle Availability**
- ▶ **Longer Transit Distances**
- ▶ **Unreliable Roadway Network**
- ▶ **Minimal Public Transit**
- ▶ **Available Guardian**



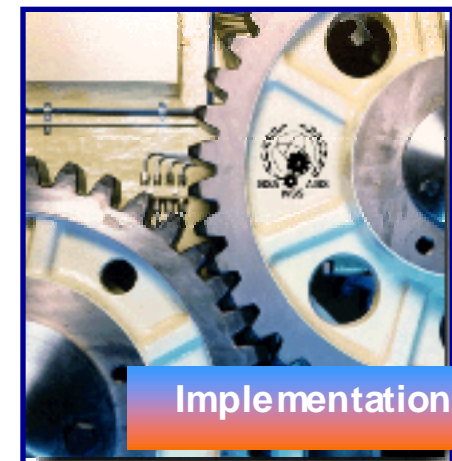
Potential Strategies

- ▶ **Improved Schedule Coordination**
- ▶ **Hybrid Fixed-Route Demand-Response Transit Systems**
- ▶ **Blended Fleet Use**
- ▶ **Education Regarding the Availability of (and Potential Adaptation of) Medicaid Transport Benefits**



Implementation Issues

- ▶ **Codified or Even Statutory Restrictions On Vehicle Uses**
- ▶ **Tremendous Variations In Medicaid Transport Provisions**
- ▶ **Guardian Issue and Transit Rules**
- ▶ **Squabbles Over Cost Allocations**



Strategies for Improving Transportation Access for Children's Health Services In Rural Communities

Mark Burton

Center for Transportation Research

November 2007

