

turning knowledge into practice

Double Jeopardy with Men's Sexual Behavior and Drug Use: Down Low and High

Presented by

Elizabeth Costenbader; W. Zule; W. Wechsberg

RTI International

Presented at

The 135th Annual Meeting of the American Public Health Association

Washington, DC, November 3–7, 2007



3040 Cornwallis Road
Phone 919-541-6000

■ P.O. Box 12194

■ Fax 919-485-5555

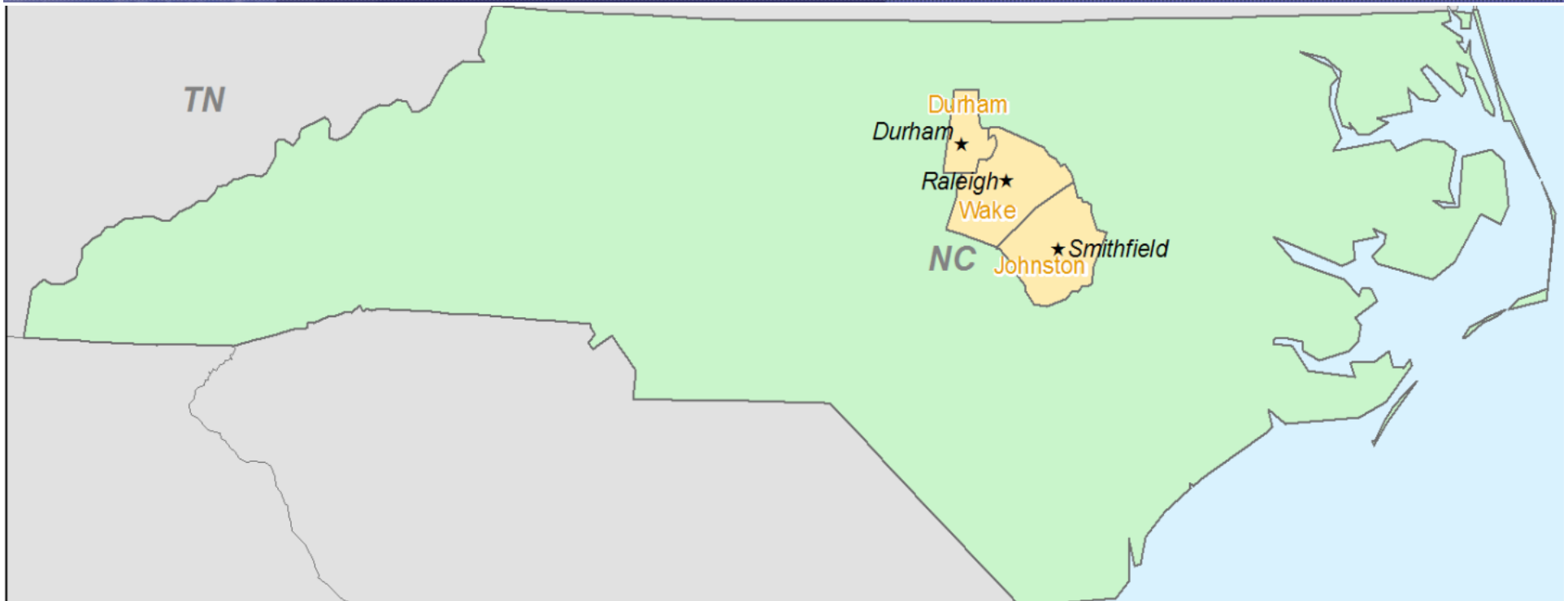
■ Research Triangle Park, NC 27709

■ e-mail ecostenbader@rti.org

www.rti.org

*RTI International is a trade name of
Research Triangle Institute*

North Carolina SATH-CAP



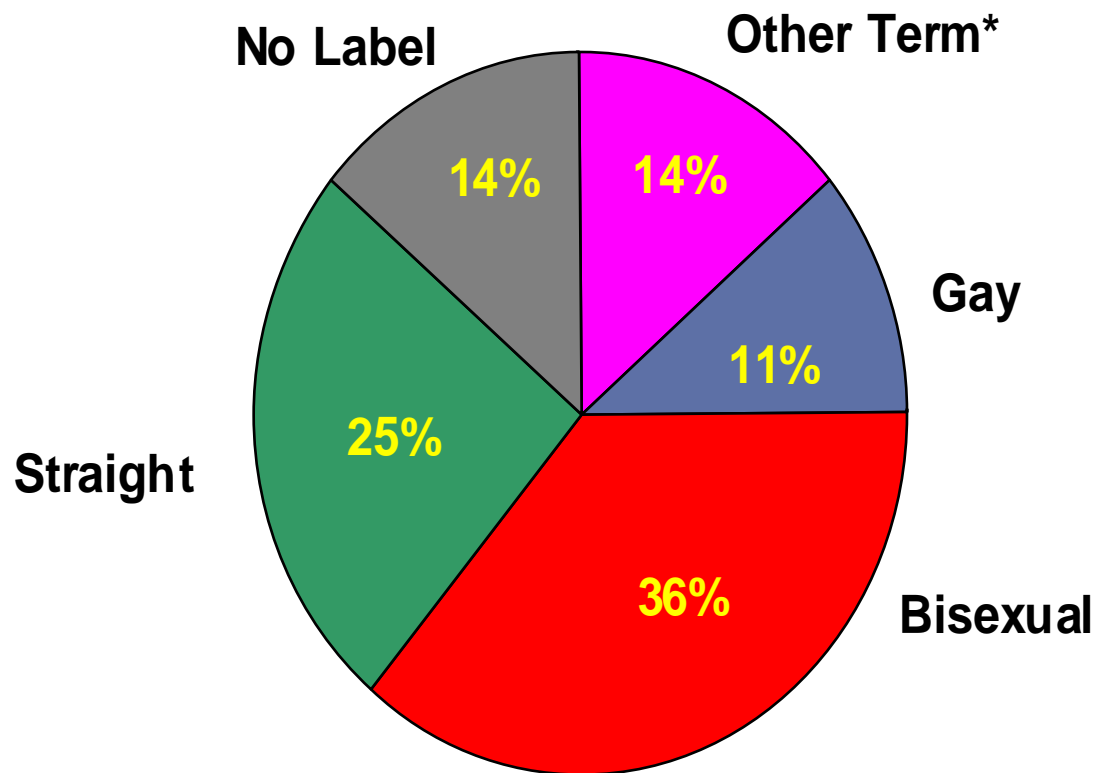
- Sexual Acquisition and Transmission of HIV- Cooperative Agreement Program (SATH-CAP) – funded by NIDA
- 881 Drug Users (DUs) & MSM recruited - September '05-November '06

Background

- MSMW thought to serve as a bridge in HIV epidemic
- More than 30% of men in year 1 reported sex with both men & women past 6 months
- Little is known about this risk group
- Identify with a variety of sexual labels

MSMWs Identify with a Variety of Sexual Labels

% MSMW Sexual Self-Identification



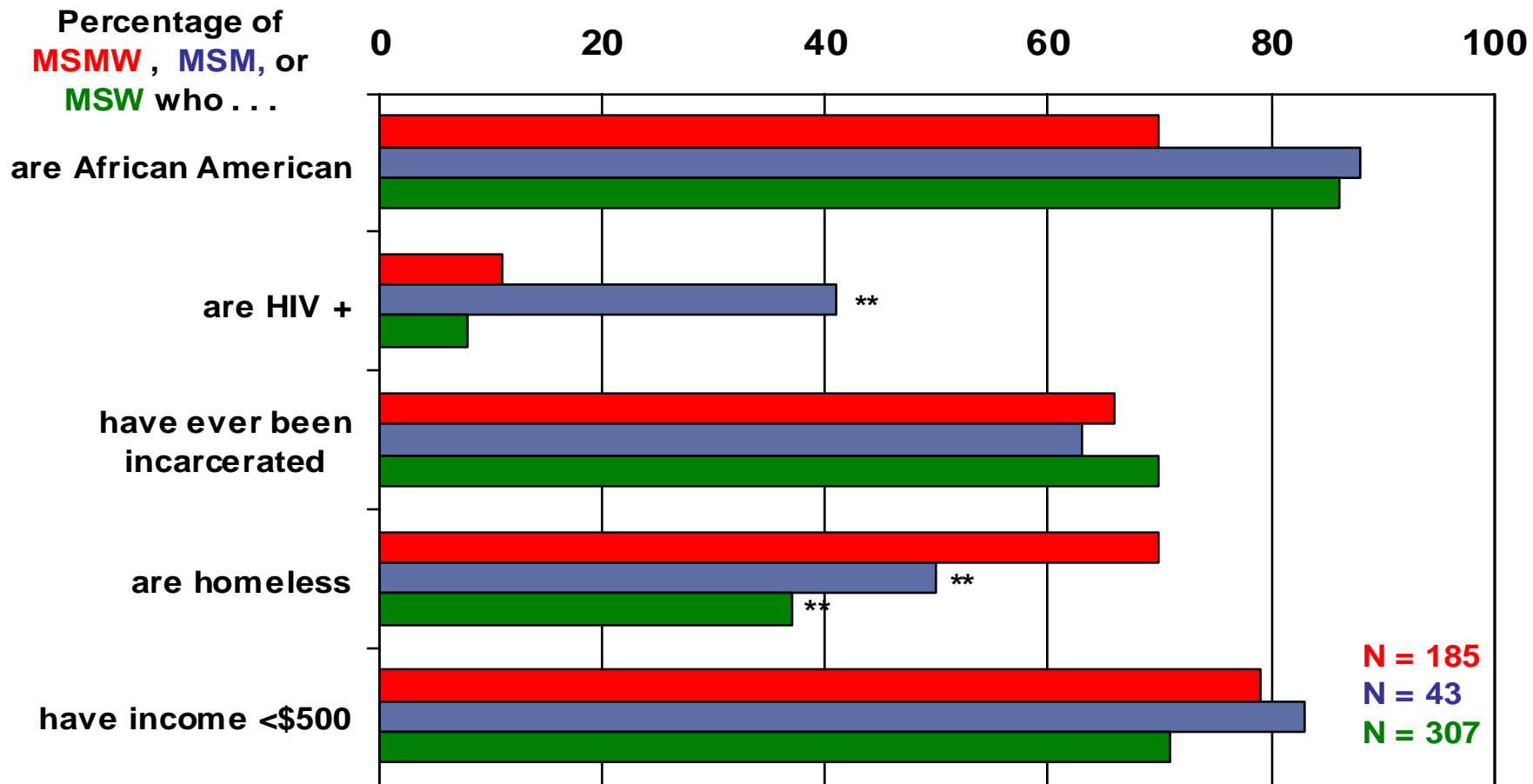
* Includes:

- 1) Down Low
- 2) Just messing around on the other team
- 3) Same gender-loving

Objectives & Approach

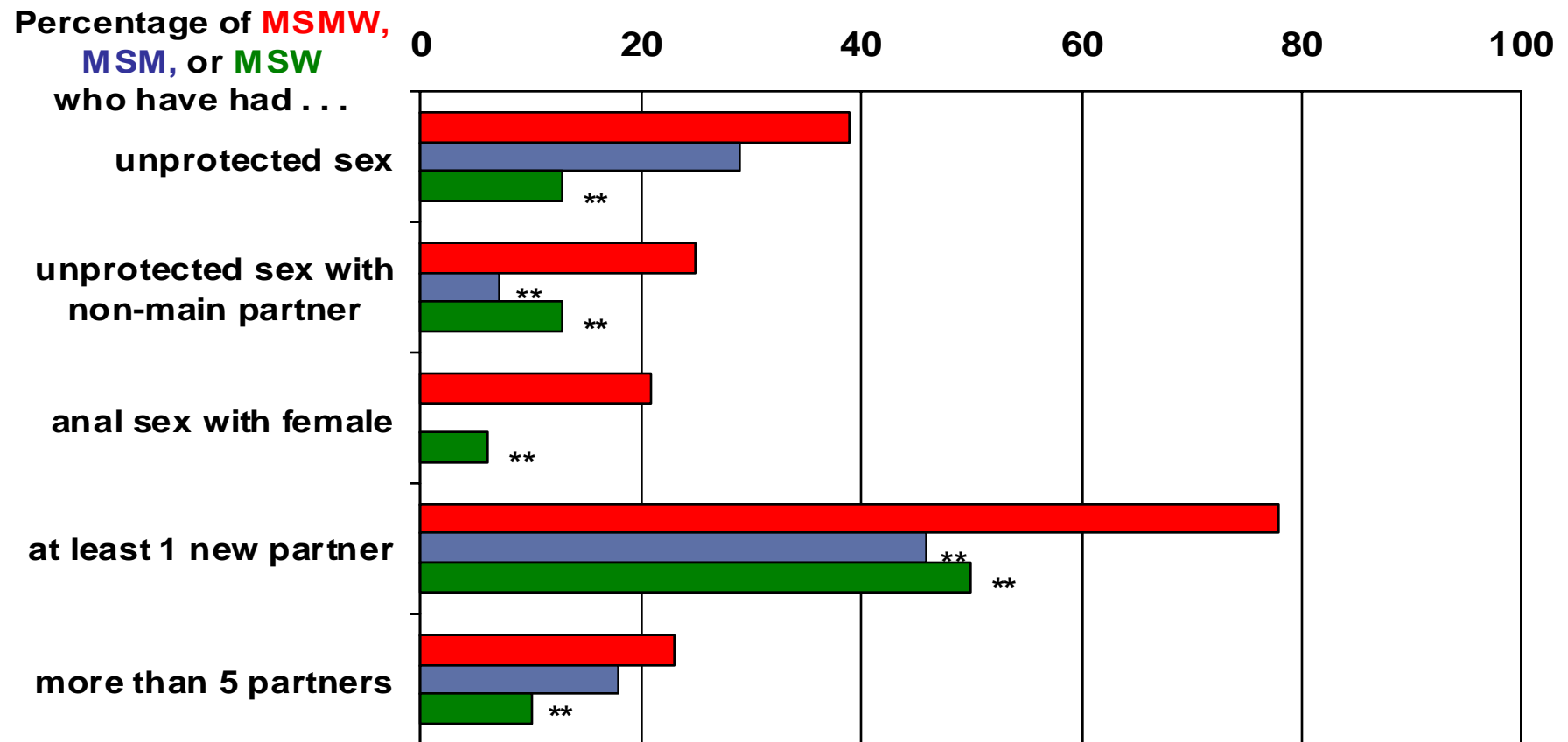
- Objectives: To determine whether MSMWs:
 - Are demographically &/or behaviorally different from other men
 - Might be serving as a bridge for transmitting HIV from one demographic risk group to another
- Approach:
 - Compared MSMW (N= 185) demographics and behaviors to MSW (N= 307) and MSM (N= 43)
 - Then examined Sex Partners (SP) of MSMW to discern bridging – i.e., how similar, dissimilar are their SPs?

MSMW Demographically Similar to Other Participants



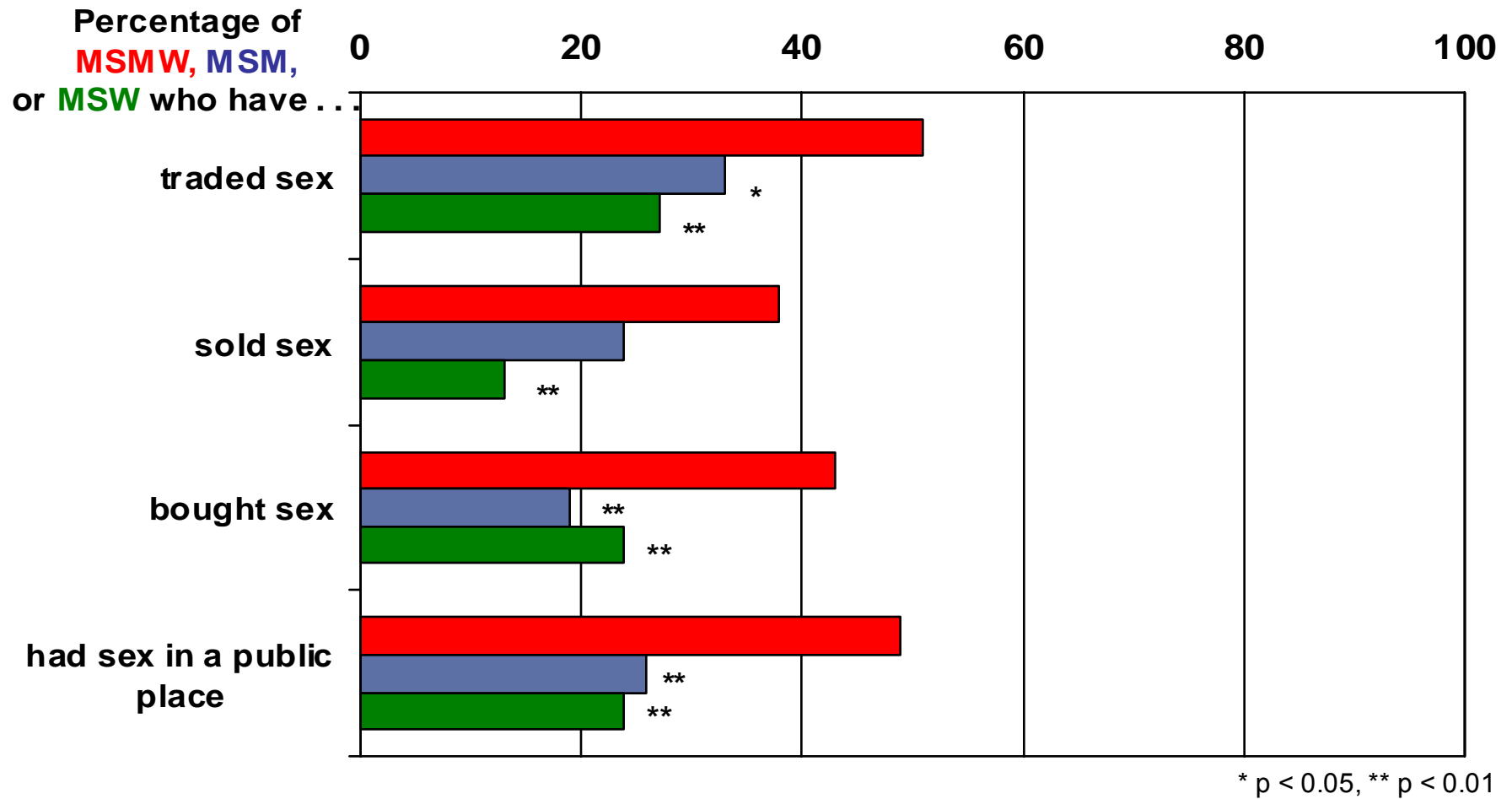
* p < 0.05, ** p < 0.01

More Unprotected Sex & New Partners Among MSMW



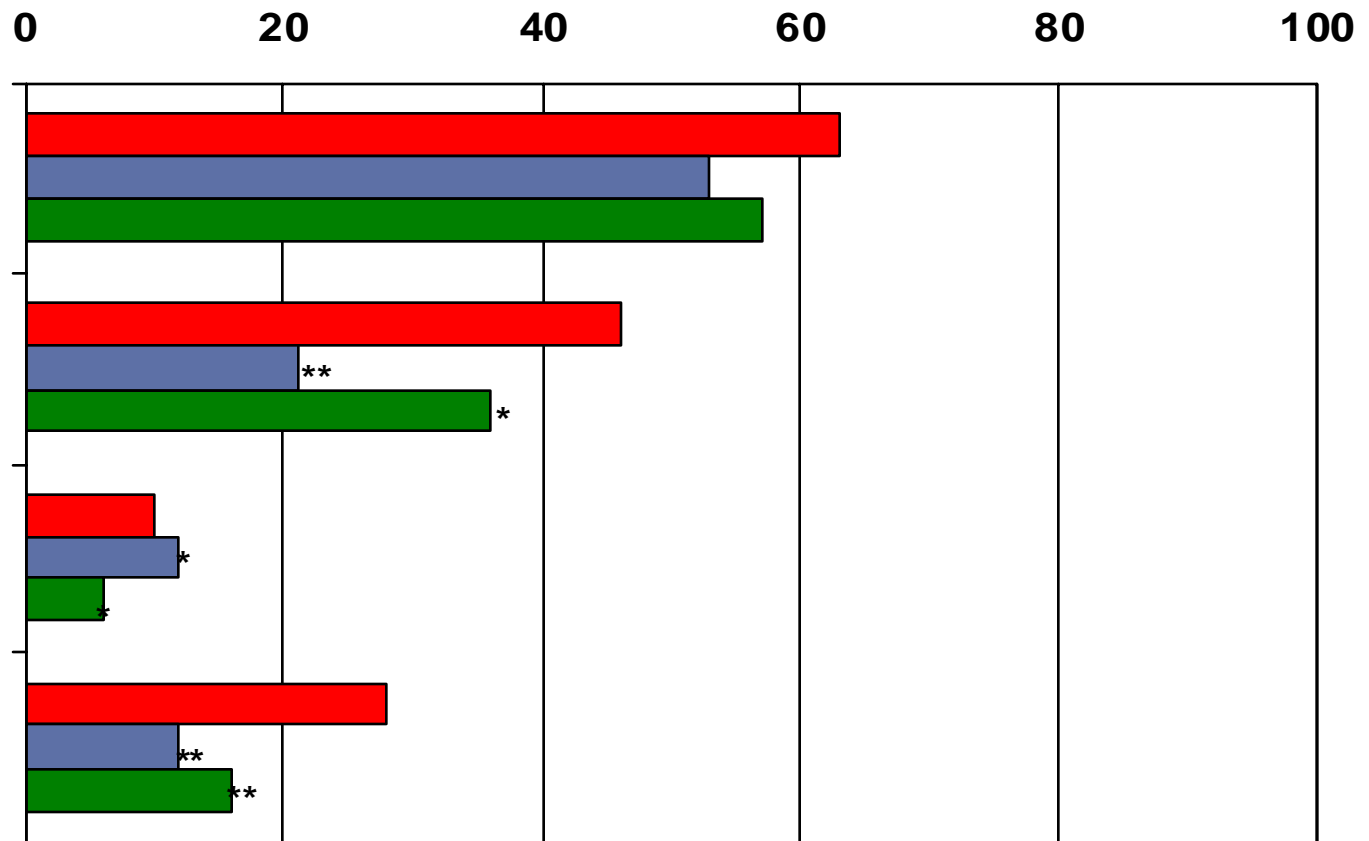
* p < 0.05, ** p < 0.01

More Sex Trading & Sex in Public Places Among MSMW



More Cocaine & Opiates Among MSMW

Percentage of
MSMW, **MSM**,
 and **MSW** using ...



* p < 0.05, ** p < 0.01

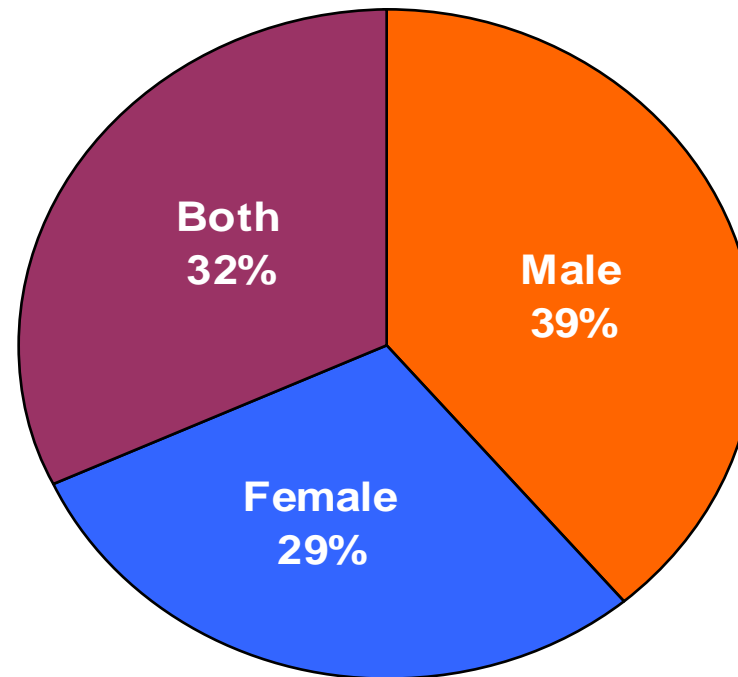
Conclusion: MSMW Appear to be Riskier

- Riskier sexually than MSM or MSW
 - Greater number of partners, more unprotected sex & more anal sex with women
 - More sex trading, buying, selling & sex in public places
- Use more drugs than MSM or MSW
 - More stimulant & opiate use and injection

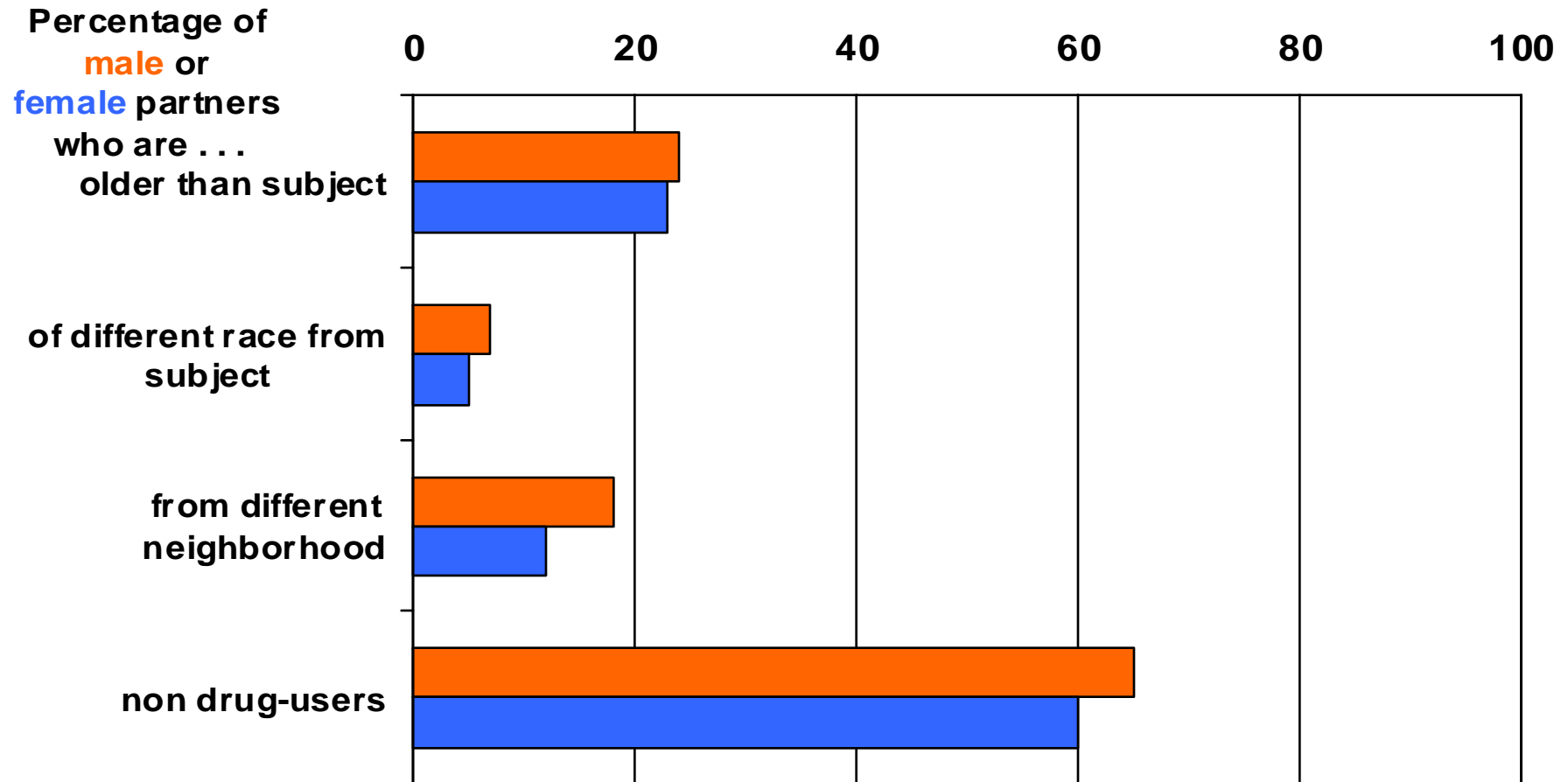
Who are Their Sex Partners?

- Looked for evidence of bridging by examining characteristics of most recent 3 sex partners?
 - Differences in DU, Sexual orientation, Race, Age
 - Met in a different neighborhood
- Also looked at concurrency (> 1 male & female partners)

Sex Partners (SPs) Were More Male than Female; Many Subjects Had Both



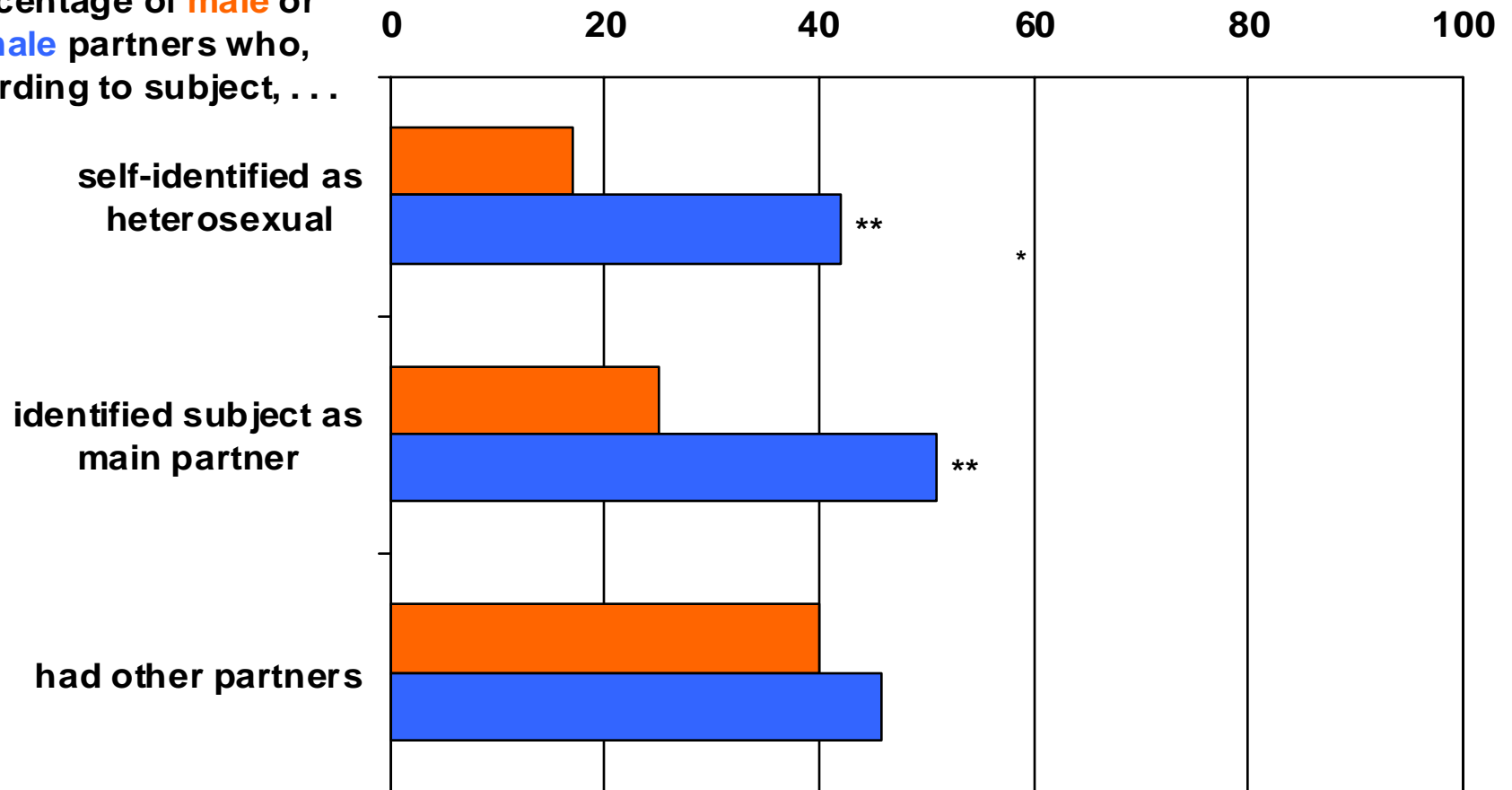
Majority of Sex Partners Non-DU



* $p < 0.05$, ** $p < 0.01$

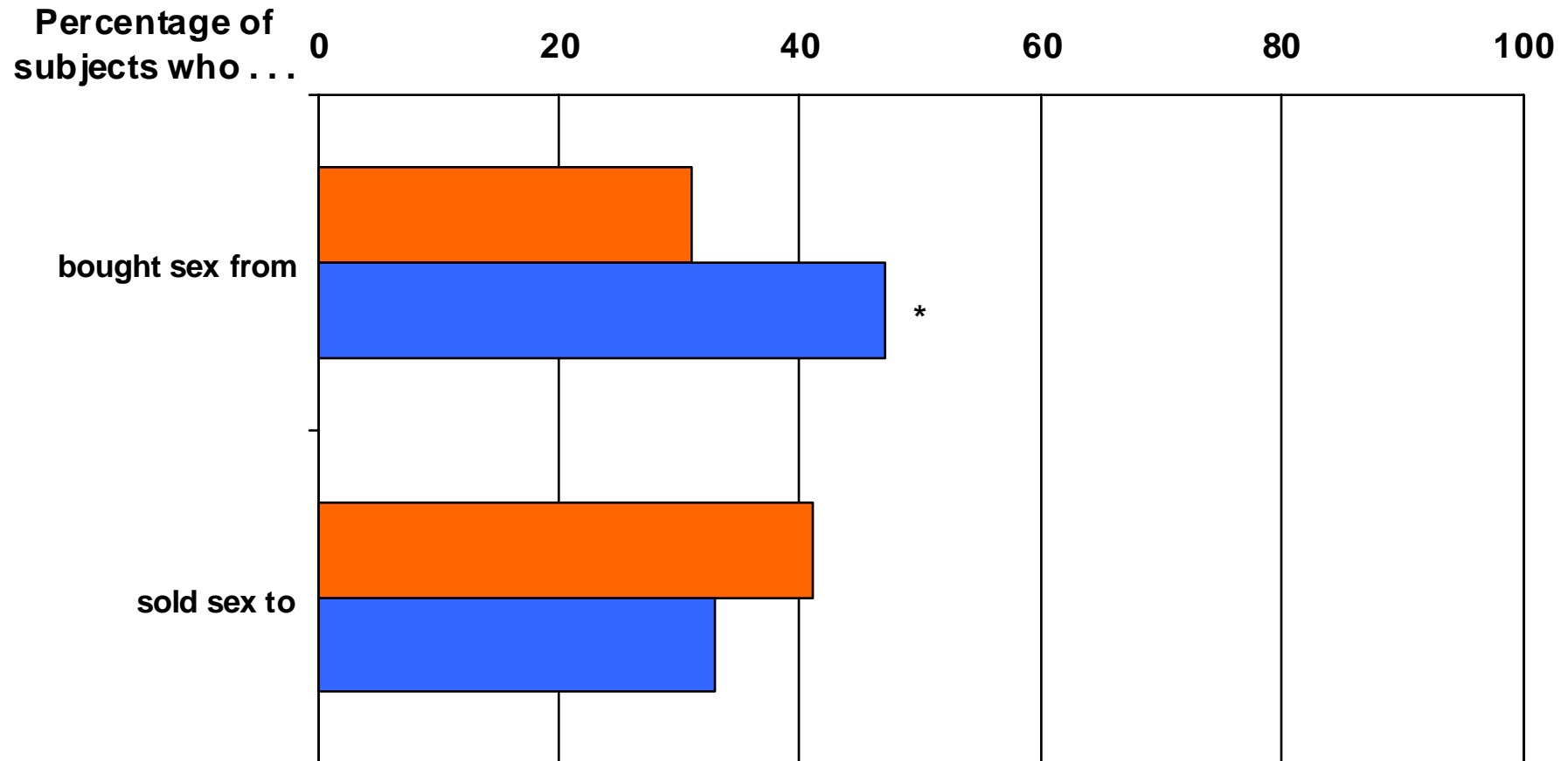
Close to 1/2 of SPs Have Other SPs

Percentage of **male** or **female** partners who, according to subject, . . .



* p < 0.05, ** p < 0.01

Trading Sex with SPs of Both Genders



... their **male** or **female** partners

* $p < 0.05$, ** $p < 0.01$

Conclusions: Bridging & Other Risk to SP's

- In addition to female to MSM bridging, bridging DU to non-DU
 - Almost 100% of MSMW are DU, more than half of their partners non-DU
- Sex Partners pose additional risks in that
 - Most partners have other partners
 - Most male partners identify as gay or bi
 - Sex trading occurs with many SPs

Next Steps

- Analyzing differences in sexual behaviors with men and women
- Conducting qualitative in-depth interviews with these men
- Development of an intervention(s) tailored to the needs of different types of MSMW

Acknowledgements

This research is supported by Grant No. U01DA017373
from the National Institute on Drug Abuse (NIDA)