

Full Scale Exercises on a Dime

*Developing regional mass prophylaxis capacity
with limited time and resources*

Charles Ishikawa, Garrett Simonsen, and Bryan Hall

Panelist

Teresa Wood, M.P.H.

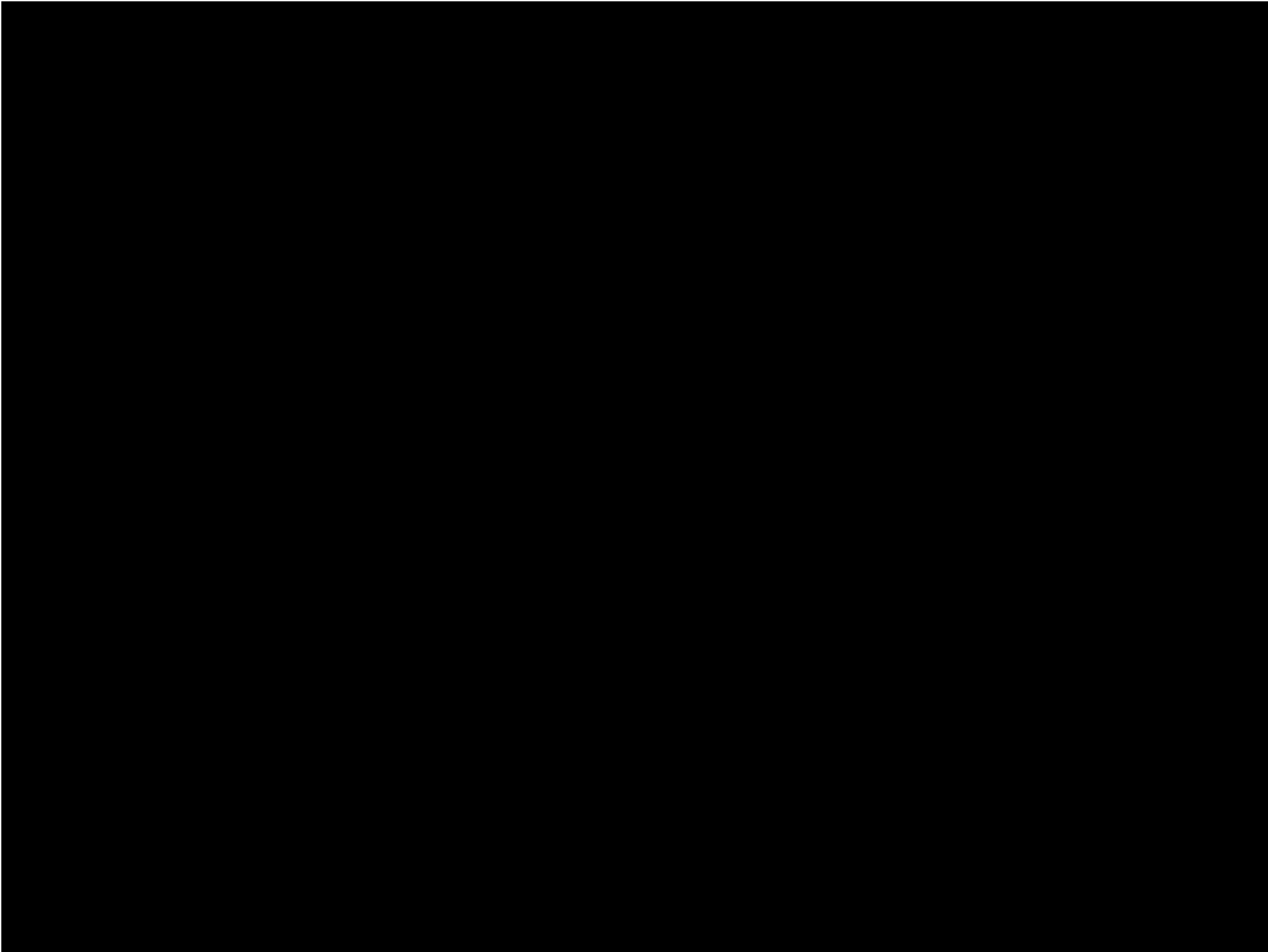
Christine Connolly, M.P.H.

Dawn Sibor, M.E.D.

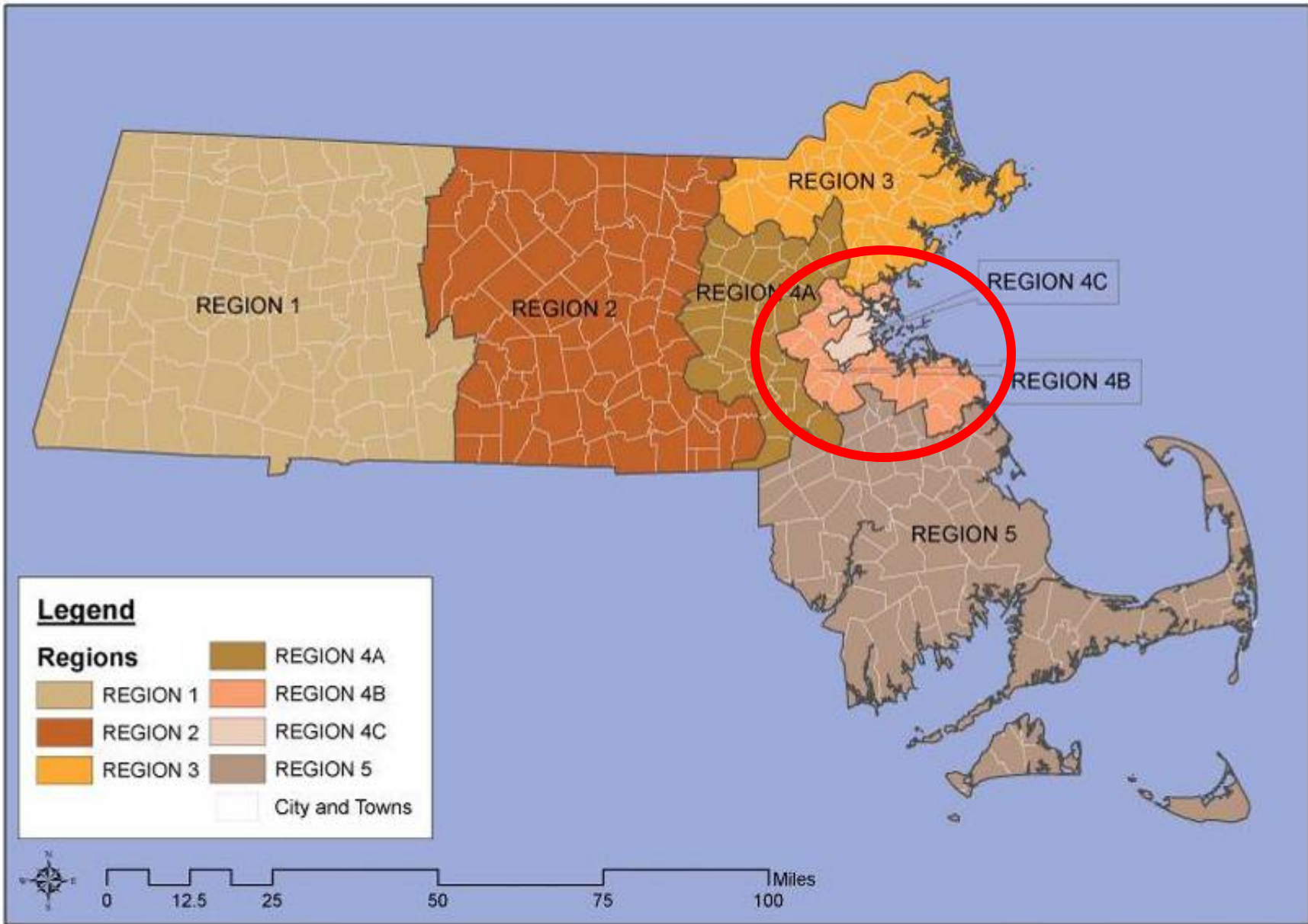
Gerard Cody



Public Health
Prevent. Promote. Protect.



Massachusetts Public Health Emergency Preparedness Regions



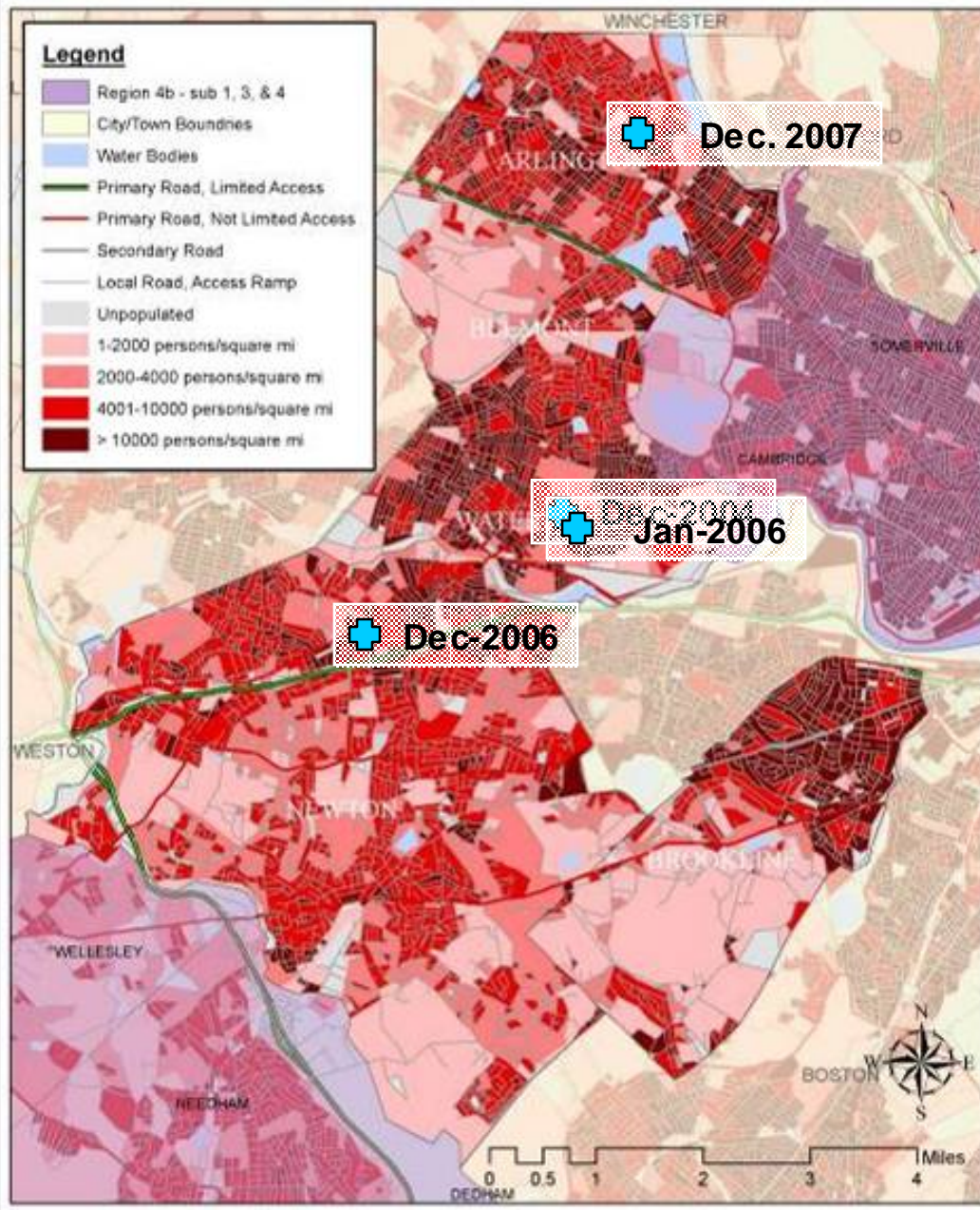
Massachusetts Public Health Emergency Preparedness Region 4b

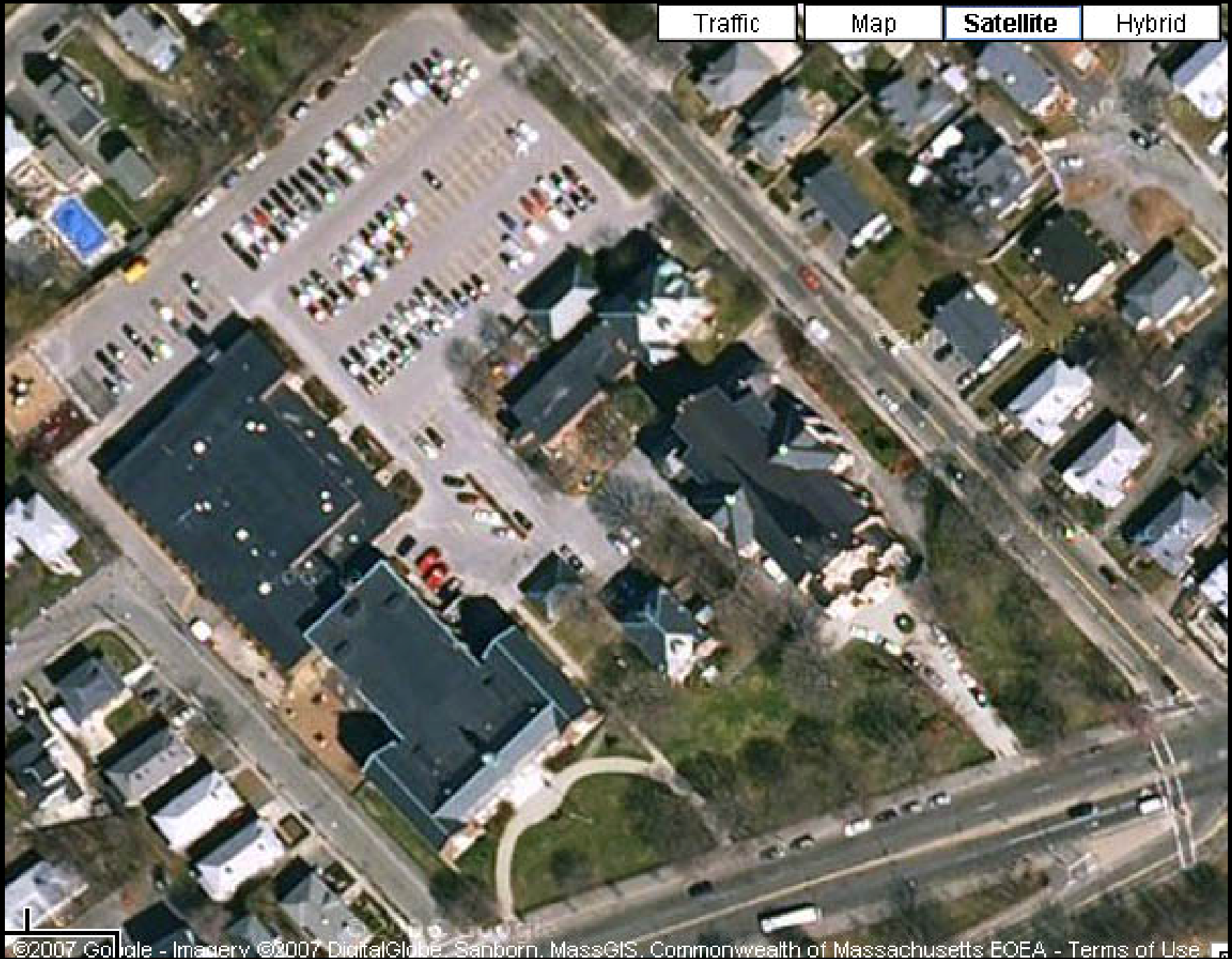
Region 4b communities and surrounding cities & towns



Massachusetts Emergency Planning Region 4b

Sub-Region 2: Arlington, Belmont, Brookline, Newton and Watertown





Traffic

Map

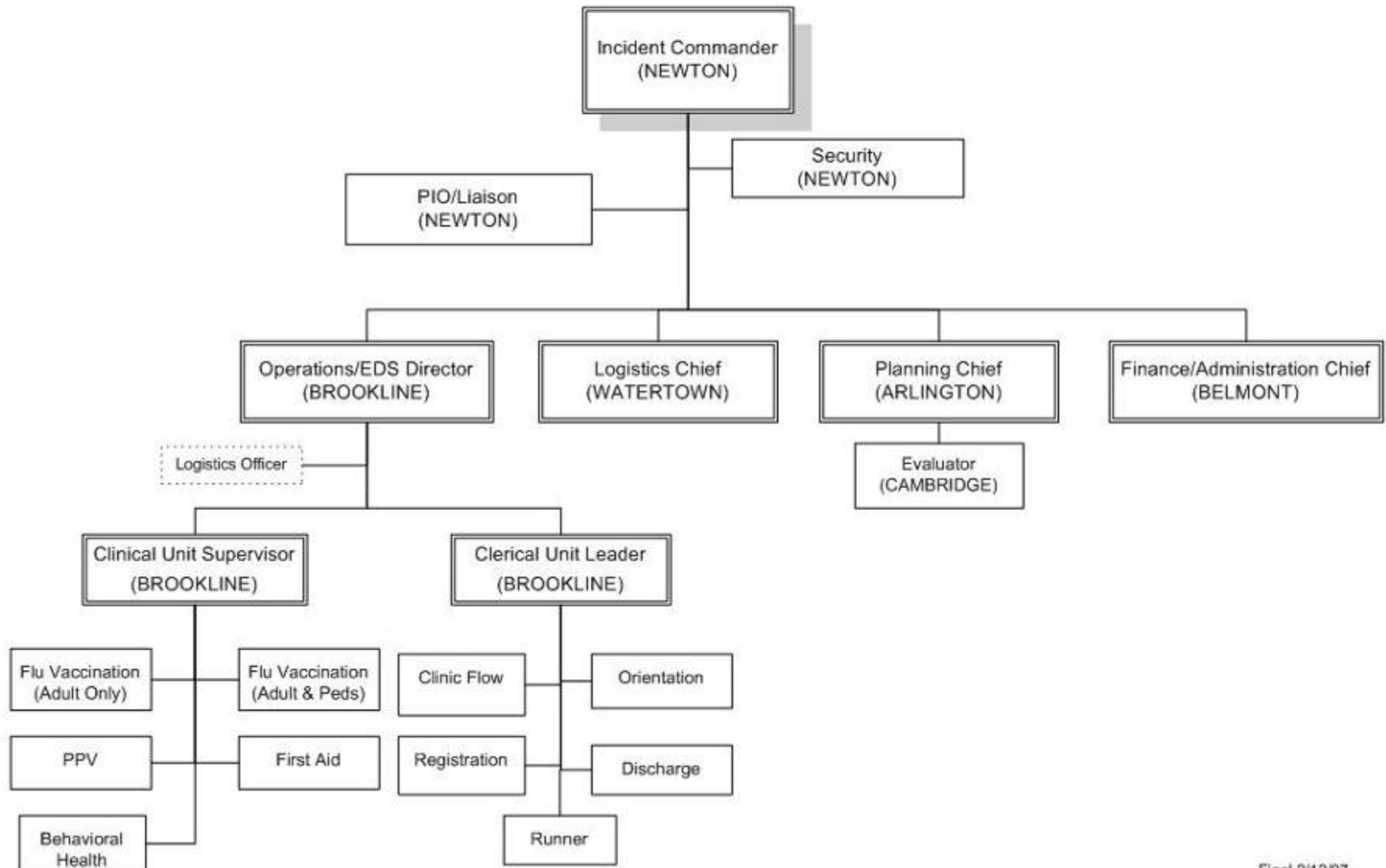
Satellite

Hybrid

©2007 Google - Imagery ©2007 DigitalGlobe, Sanborn, MassGIS, Commonwealth of Massachusetts EOEA - Terms of Use

Incident Command Structure

Sub-Region 2 Flu Vaccination Clinic / EDS Exercise - December 9, 2006
Our Lady of Help Church, Newton



Final 2/12/07

Incident Command and Exercising Regional Emergency Mass Prophylaxis



Public Health
Prevent. Promote. Protect.

Teresa Wood
City of Newton, Town of Arlington (MA)
Departments of Health & Human Services

How we did it...



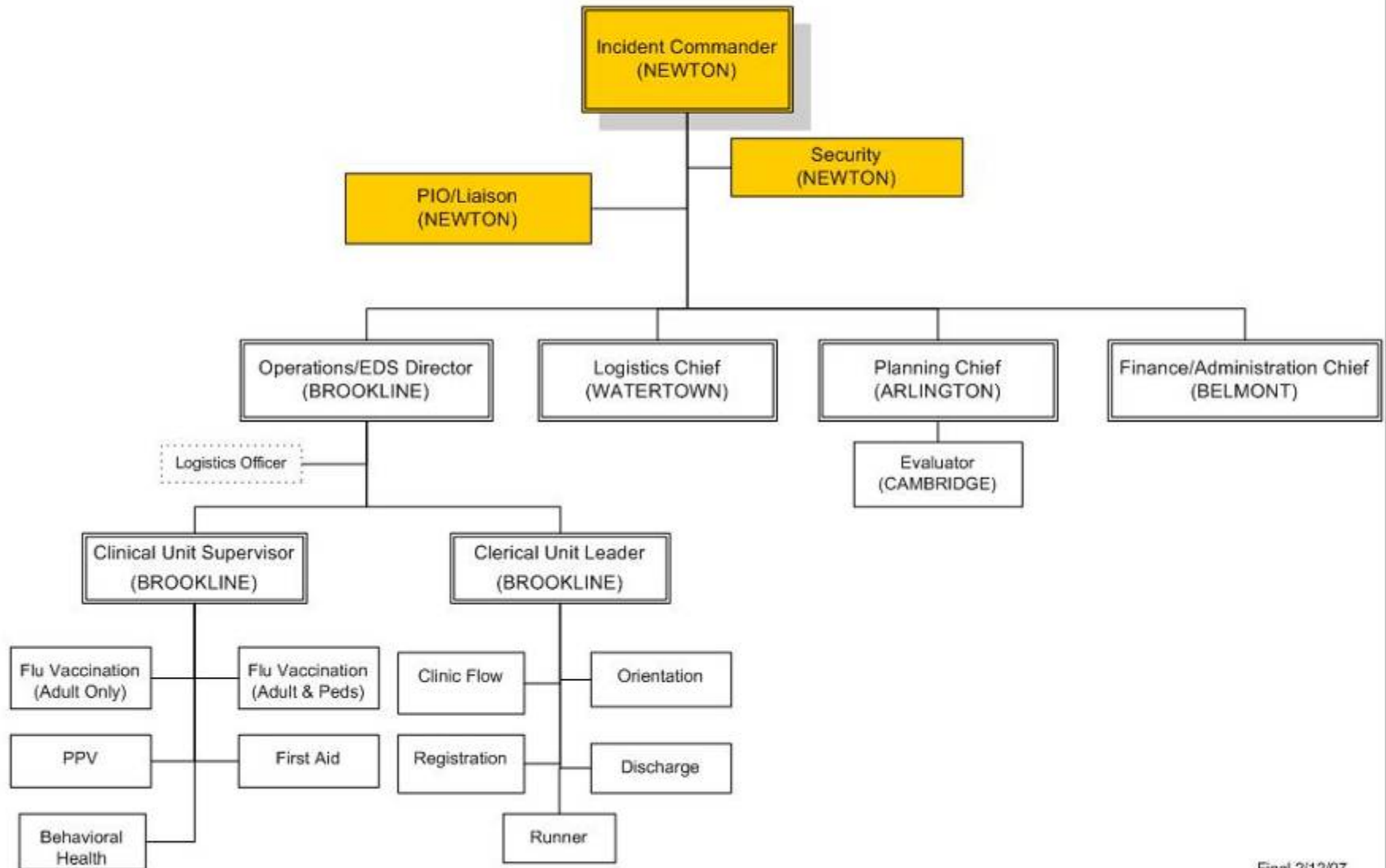
- Community Roles
- Different sizes, available resources
- Commitment
- “Loose” ICS
- Other communication



Public Health
Prevent. Promote. Protect.

Incident Command Structure

Sub-Region 2 Flu Vaccination Clinic / EDS Exercise - December 9, 2006
Our Lady of Help Church, Newton



Final 2/12/07

How we did it...



- Community Roles
- Different sizes, available resources
- Commitment
- “Loose” ICS
- Other communication



Public Health
Prevent. Promote. Protect.

Goals

- EDS Action Plan
- ICS
- Risk Communication
- Special Populations
- Behavioral Health
- Visuals
- MRC



Public Health
Prevent. Promote. Protect.

Management Lessons

- Learning to work the system
- Problem solving
- Training employees
- Using MRC volunteers
- Providing public health service



Public Health
Prevent. Promote. Protect.





Public Health
Prevent. Promote. Protect.



Public Health
Prevent. Promote. Protect.

It starts with a plan

Planning Section

Christine Connolly, MPH

Charlie Ishikawa and Bryan Hall



Public Health
Prevent. Promote. Protect.

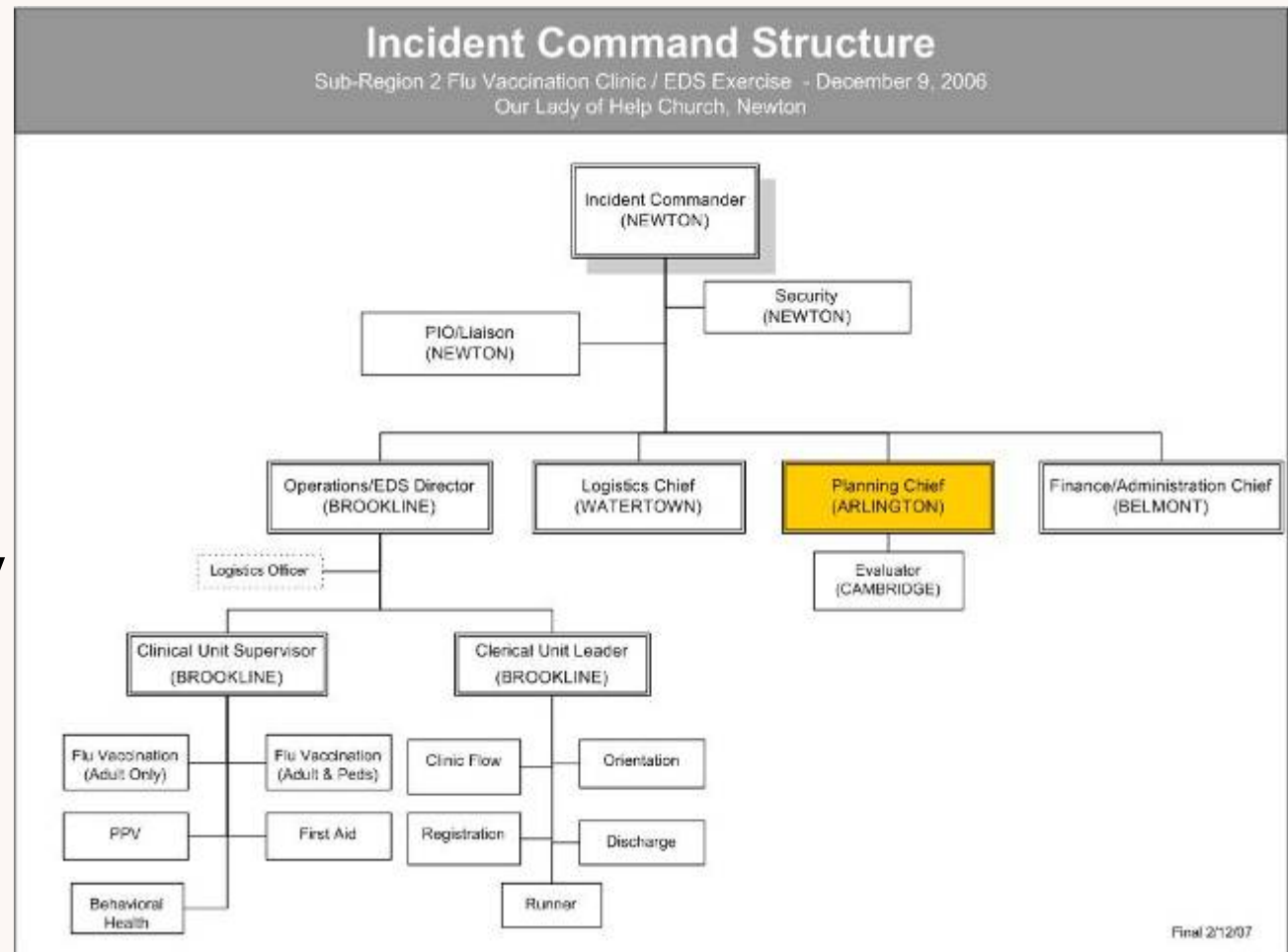
Planning Section

Staff

- Town of Arlington
- Region 4B
- Institute for Community Health



Public Health
Prevent. Promote. Protect.



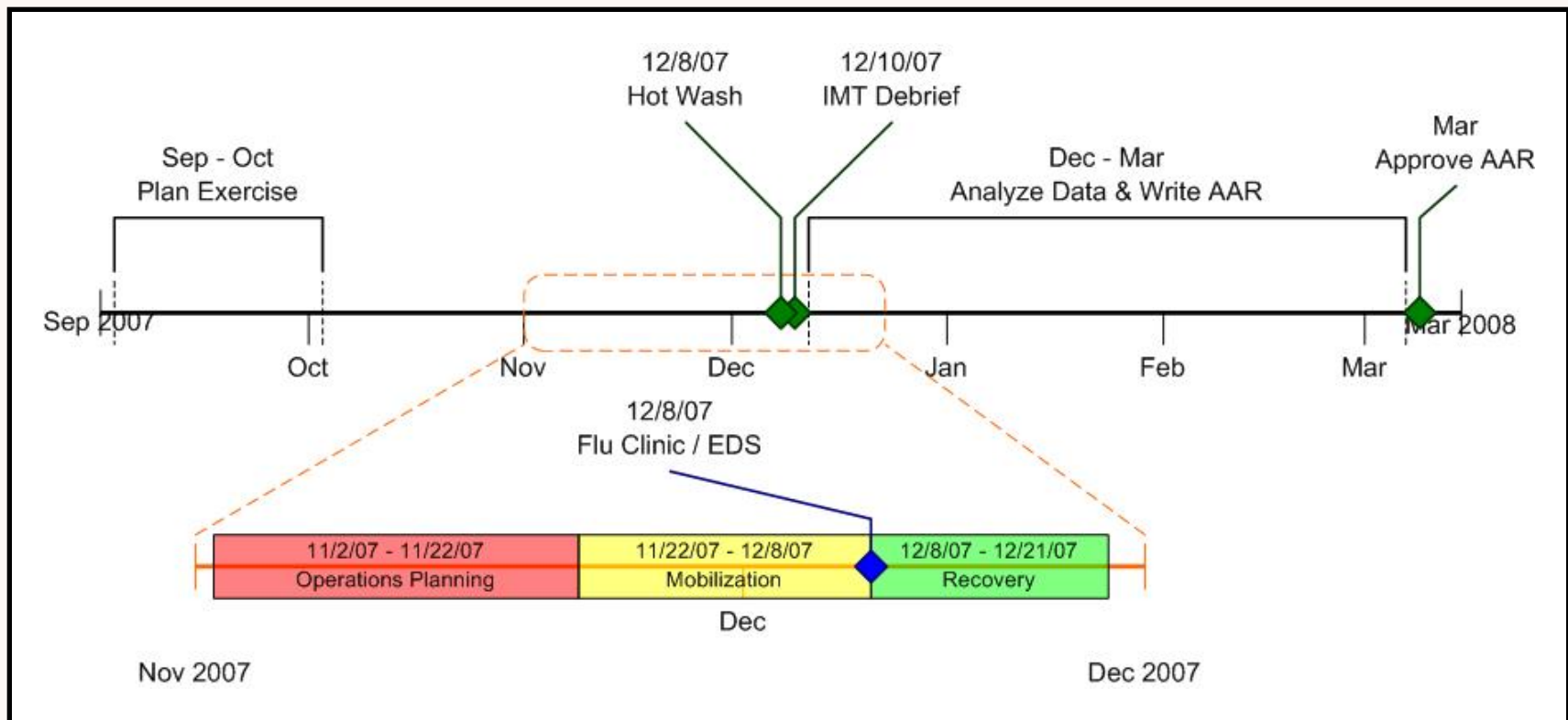
Planning Section Duties

- Developed timeline for duties
- Developed traffic plan
- Developed clinic flow plan
- Organized vaccine types, quantities, lot #s
- Developed evaluation plan
- Evaluated exercise



Public Health
Prevent. Promote. Protect.

Timeline



Public Health
Prevent. Promote. Protect.

Example: Documented tasks by Section

Section	Phase			
	Planning	Mobilization	Operation	Recovery
Incident Commander	<ul style="list-style-type: none"> • Establish command 	<ul style="list-style-type: none"> • Coordinate sections 	<ul style="list-style-type: none"> • End operations 	<ul style="list-style-type: none"> • Convene IMT debrief
Planning	<ul style="list-style-type: none"> • Document objectives • Timeline 	<ul style="list-style-type: none"> • Develop evaluation • Support planning needs 	<ul style="list-style-type: none"> • Conduct evaluation 	<ul style="list-style-type: none"> • AAR/IP
Logistics	<ul style="list-style-type: none"> • Survey location 	<ul style="list-style-type: none"> • Transport and/or organize resources 	<ul style="list-style-type: none"> • Staff care • Supply management 	<ul style="list-style-type: none"> • Medical waste disposal • Return surplus
Operations	<ul style="list-style-type: none"> • Clinical planning • Resource needs 	<ul style="list-style-type: none"> • Train clinical staff 	<ul style="list-style-type: none"> • JITT • Run Clinic 	<ul style="list-style-type: none"> • Debrief
Finance & Administration	<ul style="list-style-type: none"> • Standing order • Establish budget 	<ul style="list-style-type: none"> • Monitor expenditures 	<ul style="list-style-type: none"> • Support Operations 	<ul style="list-style-type: none"> • Reimbursement

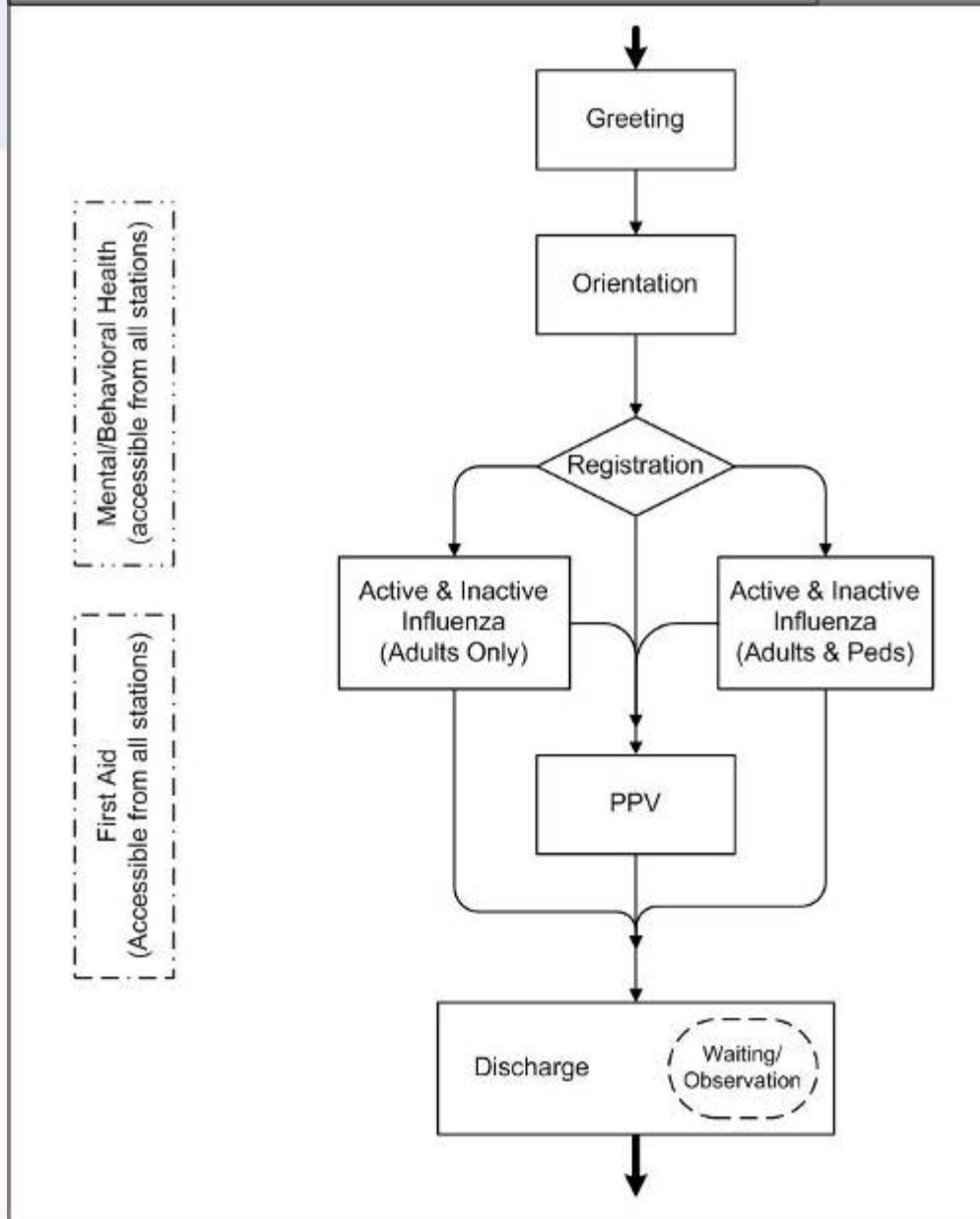
Traffic Plan

- Worked with Auxiliary Police in Newton
- Drew up plan
- Designated officer locations

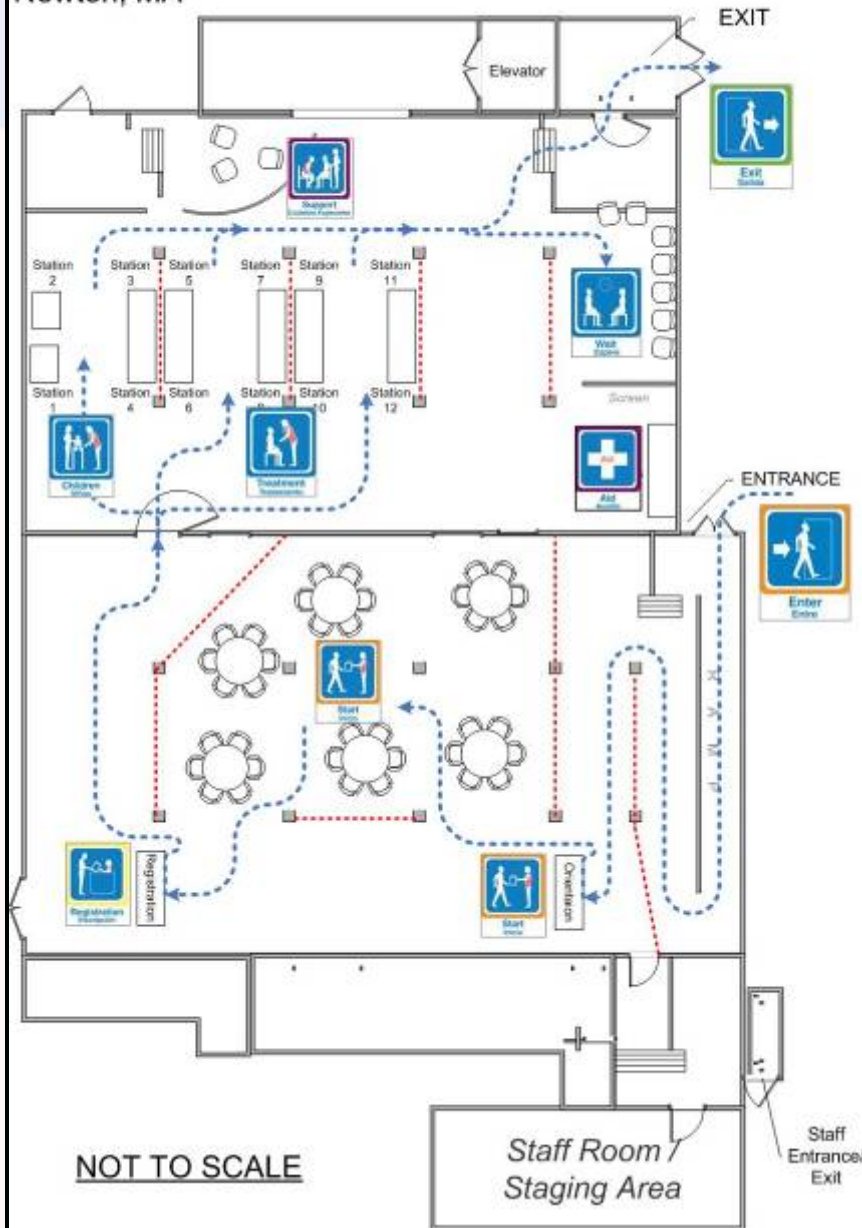
- What was missed:
 - Exterior signage
 - Officers were late



Public Health
Prevent. Promote. Protect.



Sub-Region 2 EDS Exercise
Flu / PPV Clinic Floor Plan: Our Lady of Help Church
Newton, MA



Public Health
Prevent. Promote. Protect.

Vaccine

- Pooled flu vaccine from all communities, from Mass DPH and Flu Mist from MedImmune
- 10 different lots for 6 different types of vaccines
- Vaccine lots
 - Coordinated through planning
 - Used color labels to track



Public Health
Prevent. Promote. Protect.

Exercise Objectives

- 1. Implement EDS Action Plan**
- 2. Develop and practice Incident Command Structure (ICS)**
- 3. Development and practice of a Risk Communication plan**
- 4. Increase outreach to special populations**
- 5. Develop and practice a behavioral health service**
- 6. Improve visual identification of volunteers and clinical stations**
- 7. Mobilize Region 4b Medical Reserve Corp (MRC)**



Public Health
Prevent. Promote. Protect.