

Gulf Coast Behavioral Telehealth Disaster Response Initiative Policy Implications

American Public Health Association
Annual Meeting
Washington, DC
05 November 2007

Thomas J. Kim, MD, MPH
Telehealth Project Manager
RCC at MSM

Acknowledgements / Disclosures

- The RCC at MSM
 - Drs. Satcher, Maupin, Rust and Others
- Gulf Coast Collaborators
- National Collaborators

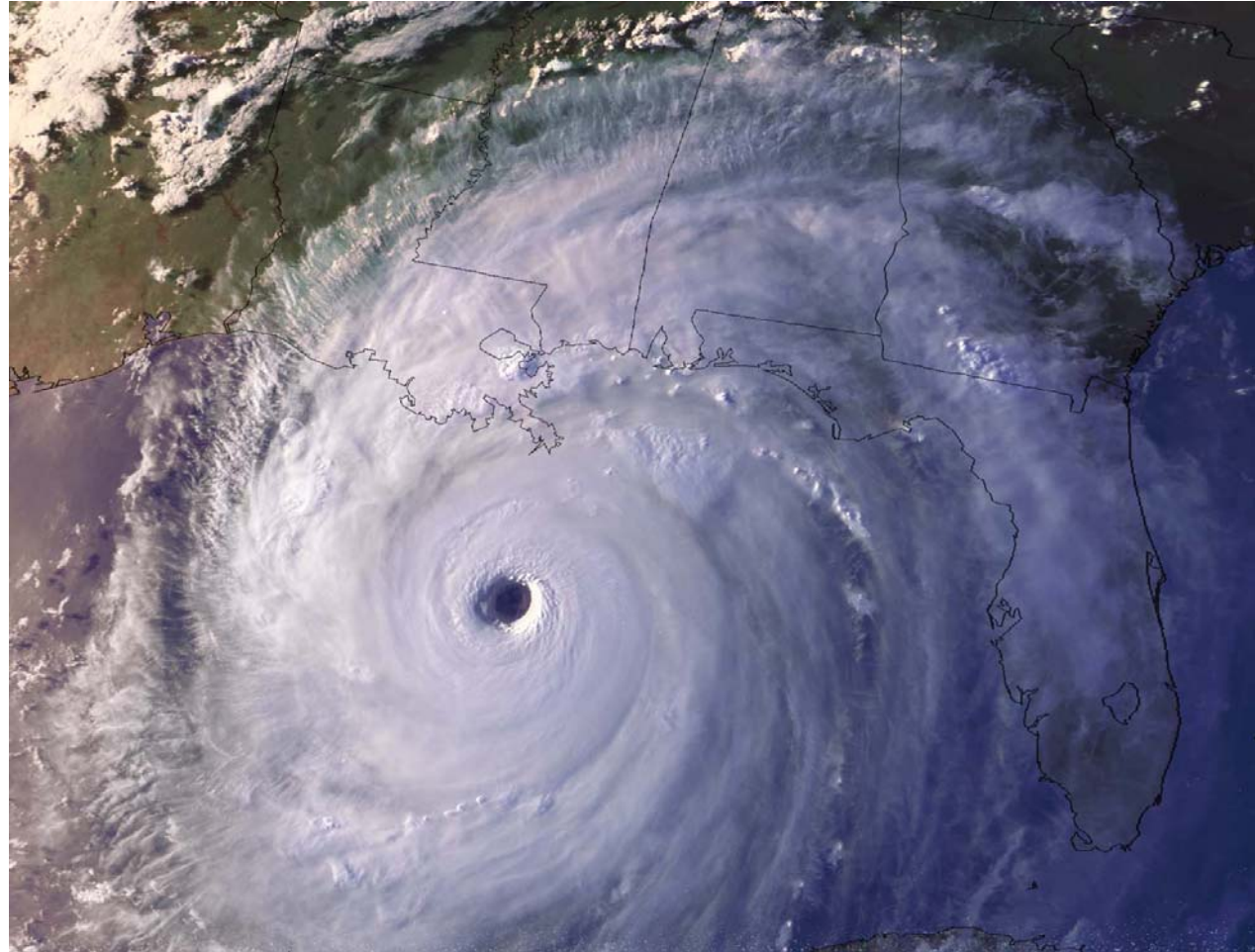
- No Disclosures

RCC at MSM

- Support
 - OMH, NCMHHD Funding Fall 2005
 - RWJF Funding Spring 2007
- Project Aim
 - Disaster Response to Health Disparities
 - Age Appropriate, Culturally Competent Care
 - Reproducible, Sustainable Telehealth Model

After The Storm

- August 2005



After The Storm Population

- **Brown University
American Communities Project**

Table 2. Displaced population based on DHH estimates

	Imputed net loss 1/06	DHH Population Estimates				Census estimate
		1/06	12/05	11/05	10/05	7/05
New Orleans metro total	468,715	871,982	848,751	818,600	725,704	1,340,697
City of New Orleans:						
Orleans	302,253	156,140	138,681	138,681	138,681	458,393
Suburban parishes:						
Jefferson	94,720	363,309	354,337	328,223	258,128	458,029
Plaquemines	12,123	17,309	15,984	14,671	5,794	29,432
St. Bernard	60,520	6,899	13,111	13,111	13,111	67,419
St. Charles	-3,471	51,830	52,137	52,205	52,492	48,359
St. James	-905	21,747	21,981	21,975	22,317	20,842
St. John the Baptist	-4,696	49,286	49,983	51,065	54,668	44,590
St. Tammany	8,172	205,461	202,536	198,668	180,513	213,633
Other Louisiana parishes	-83,002	3,265,933	3,288,580	3,298,325	3,328,817	3,182,931
State total	385,713	4,137,915	4,137,331	4,116,925	4,054,522	4,523,628
Imputed out of state total		385,713	386,297	406,703	469,106	

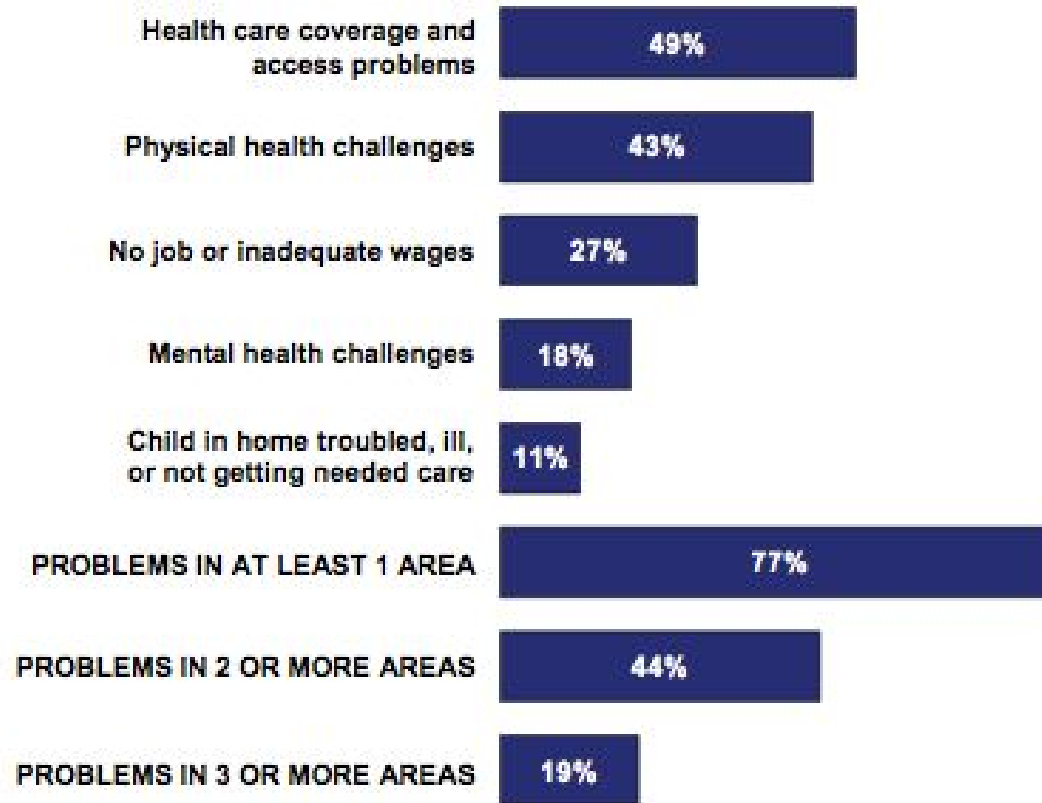
Ref
Logan 06/07

After The Storm Problems

- **KFF Baseline Survey Fall 2006**

Portrait of Problems Faced by Greater New Orleans Residents

Percent who reported having a problem in each of the following areas:



Ref
KFF 07/07

After The Storm Personnel

- MD Workforce

07/2005

- Total in LA 11,025
- Outside LA 4,918



Ref
LSBME 05/07

After The Storm Personnel

- MD Workforce

	<u>07/2005</u>	<u>03/2007</u>
– Total in LA	11,025	10,499
– Outside LA	4,918	4,728



Ref
LSBME 05/07

After The Storm Personnel

- MD Workforce

	<u>07/2005</u>	<u>03/2007</u>
– Total in LA	11,025	10,499
– Outside LA	4,918	4,728
– Orleans	↓ 36% (881)	
– St Bernard	↓ 86% (42)	
– Jefferson	↓ 3% (45)	
– Ascension	↑ 26% (16)	
– Tangipahoa	↑ 22% (26)	
– Lafayette	↑ 11% (65)	
– E B Rouge	↑ 9% (115)	



Ref
LSBME 05/07

Telehealth Primer

Ref
HRSA OAT

- **Definition**
 - The use of electronic information and telecommunications technologies to support long-distance clinical health care, patient and professional health-related education, public health and health administration.

Telehealth Primer

Ref
HRSA OAT

- **Definition**
 - The use of electronic information and telecommunications technologies to support long-distance **clinical health care**, patient and professional health-related **education**, public health and health **administration**.

Telehealth Primer

- Definition
- Terminology
 - Telemedicine, Telepsychiatry, Telehealth...
 - Synchronicity

Telehealth Primer

- Definition
- Terminology
- **Goals**
 - Distance versus Access
 - Realize Benefits, Improve Rigor

Telehealth Primer

- Definition
- Terminology
- Goals
- Rationale
 - Risk Assessment
 - Appropriate Incorporation of Technology

Telehealth Model of Care

- Components
 - Hardware



Telehealth Model of Care

Credit
Abilene Network

- Components
 - Hardware
 - Wiring Solution



Telehealth Model of Care

- Components

- Hardware

- Wiring Solution

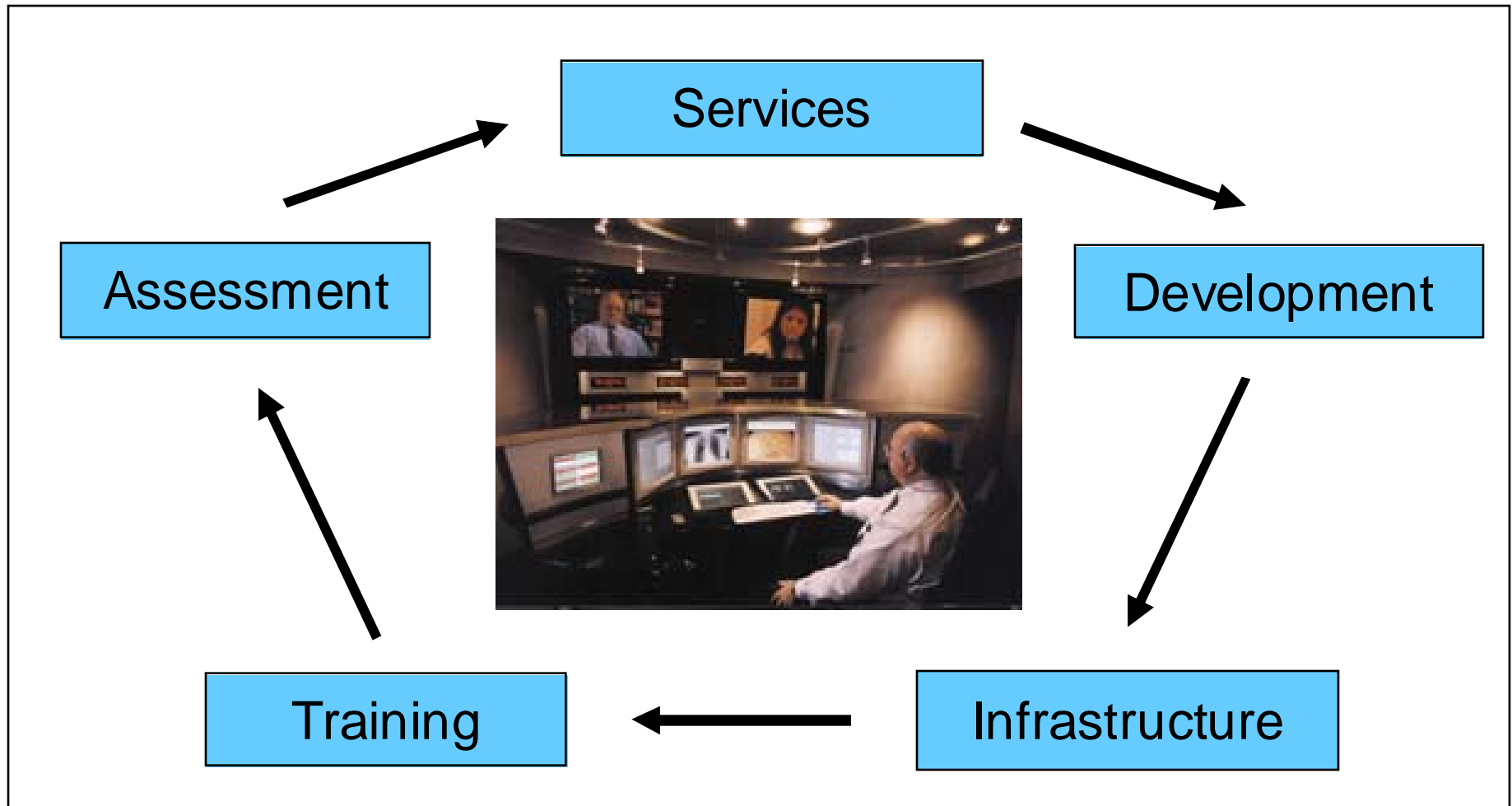
- Site Selection

KEY Features

- Client Density
- Interest
- Capacity
- Need

Telehealth Model of Care

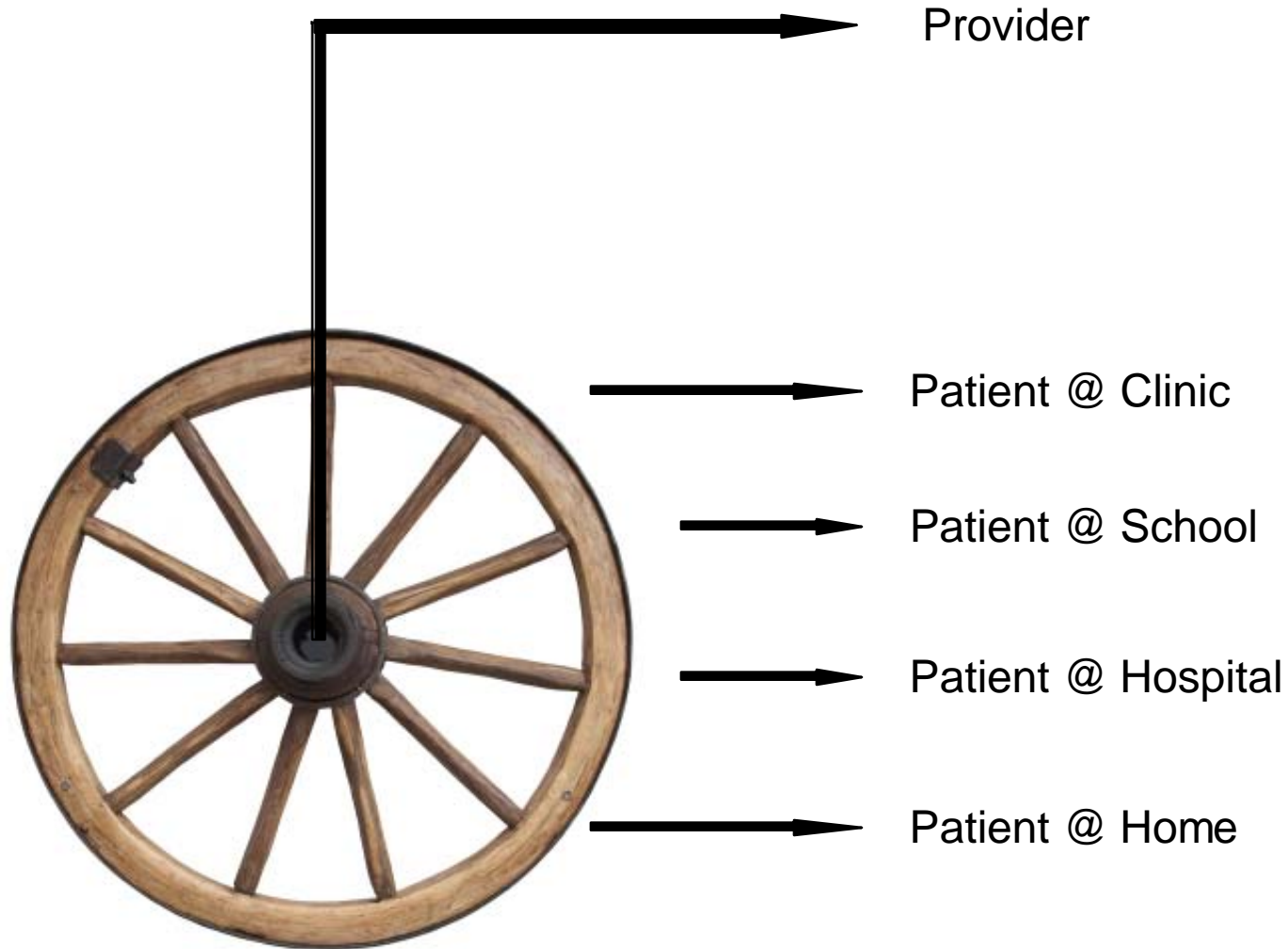
Credit
UTMB EHN



Telehealth Model of Care

- Anticipated Benefits
 - Responsive
 - Improved Quality of Care
 - Clinically Equivalent
 - Cost Effective
 - Knowledge Transfer
 - Redefines Clinician Communication

- Telehealth as Wheel



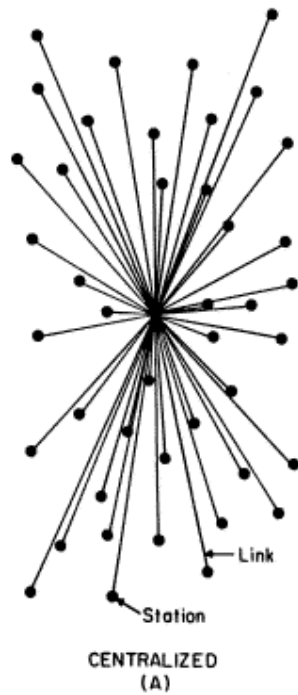
Telehealth Network

- Wheel?

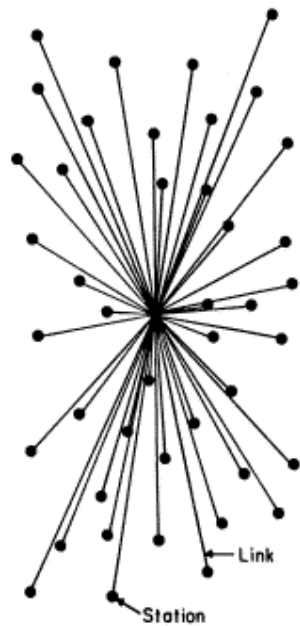


Telehealth Network

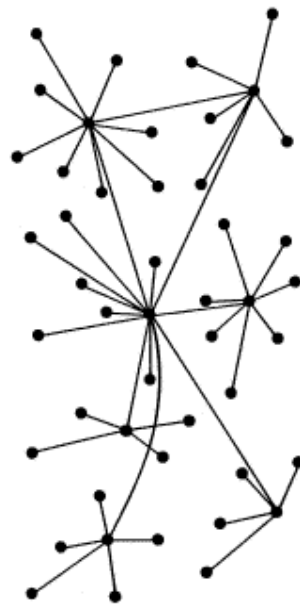
- Digital Communications



- Survivability

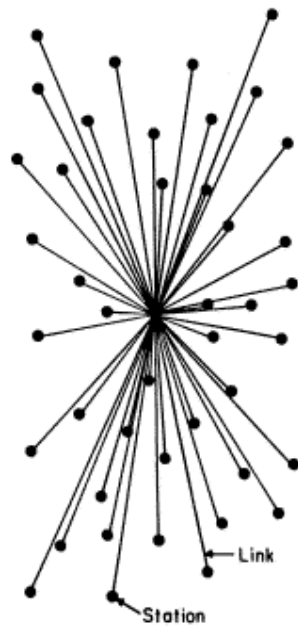


CENTRALIZED
(A)



DECENTRALIZED
(B)

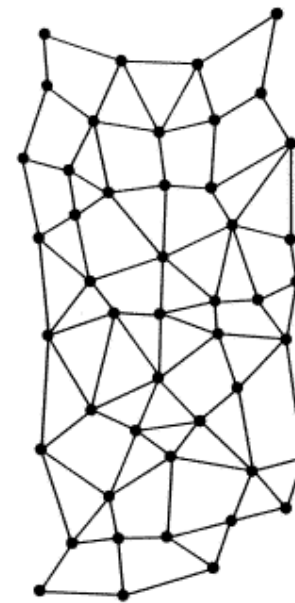
- Command and Control



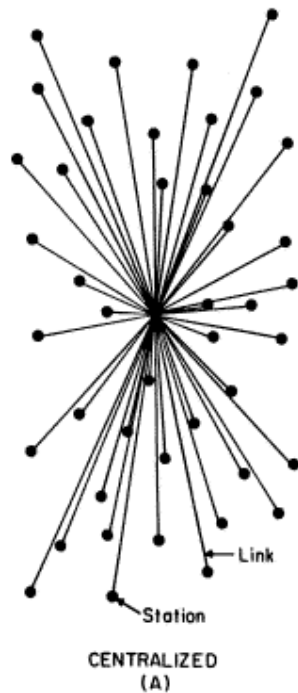
CENTRALIZED
(A)



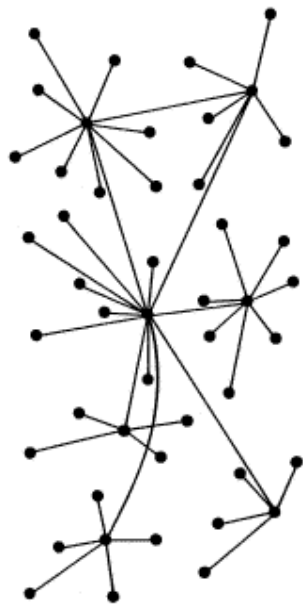
DECENTRALIZED
(B)



DISTRIBUTED
(C)

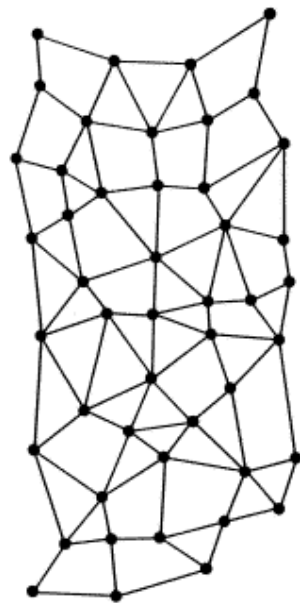


- Implementation
 - Excelth FQHC
 - Baton Rouge, LA
 - Coastal FQHC
 - Biloxi, MS
 - Mosteller FQHC
 - Bayou La Batre, AL
 - (Hope Clinic)
 - Houston, TX



DECENTRALIZED
(B)

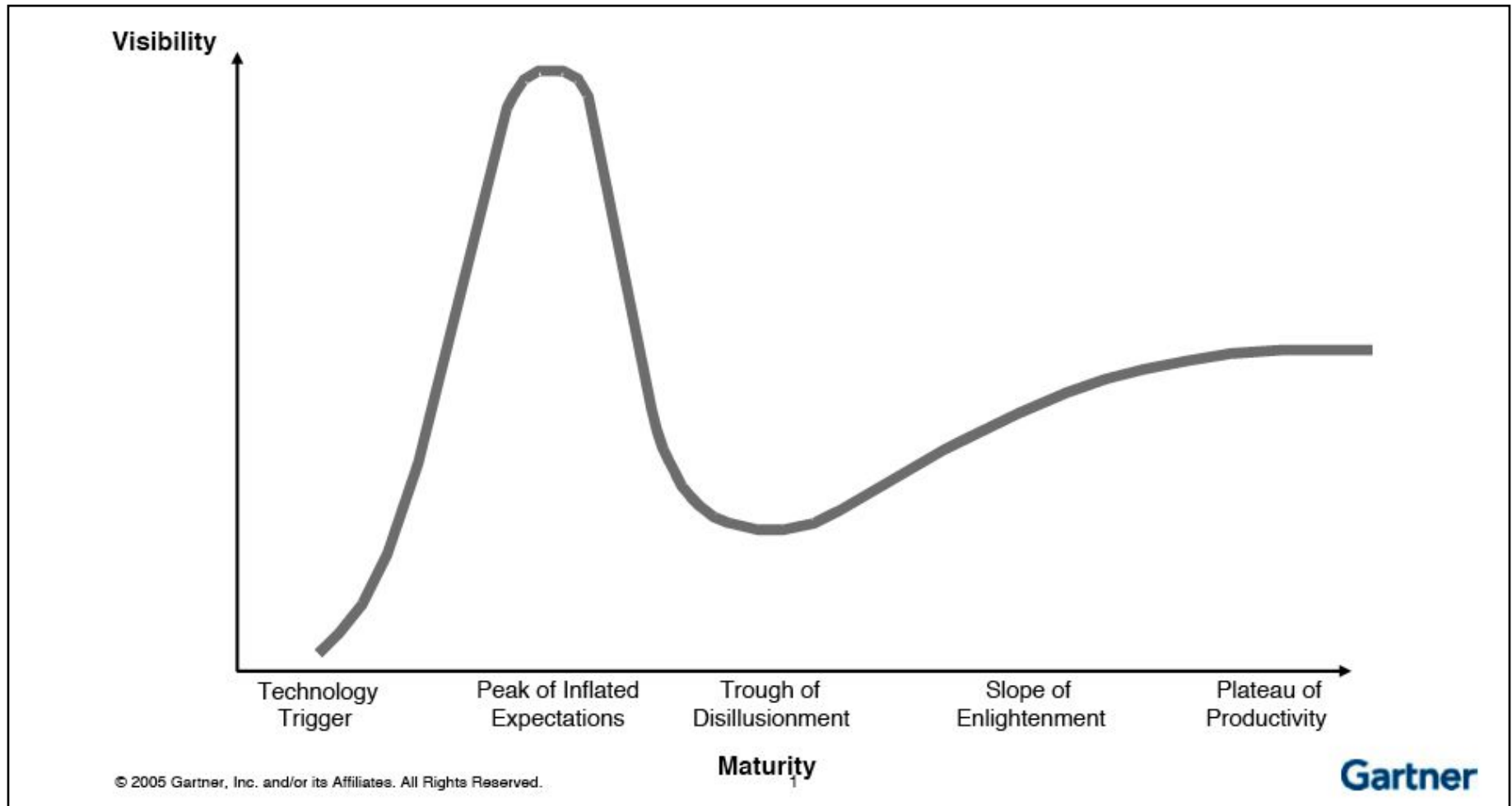
- Development
 - Children’s Health Fund
 - 3 Mobile Units
 - Project Fleur de Lis
 - 40 School Collaborative
 - Counseling Solutions
 - 5 Parish Organization
 - Mobile Mental Health
 - AL MD Organization
 - (Excelth FQHC)
 - Baton Rouge to Algiers



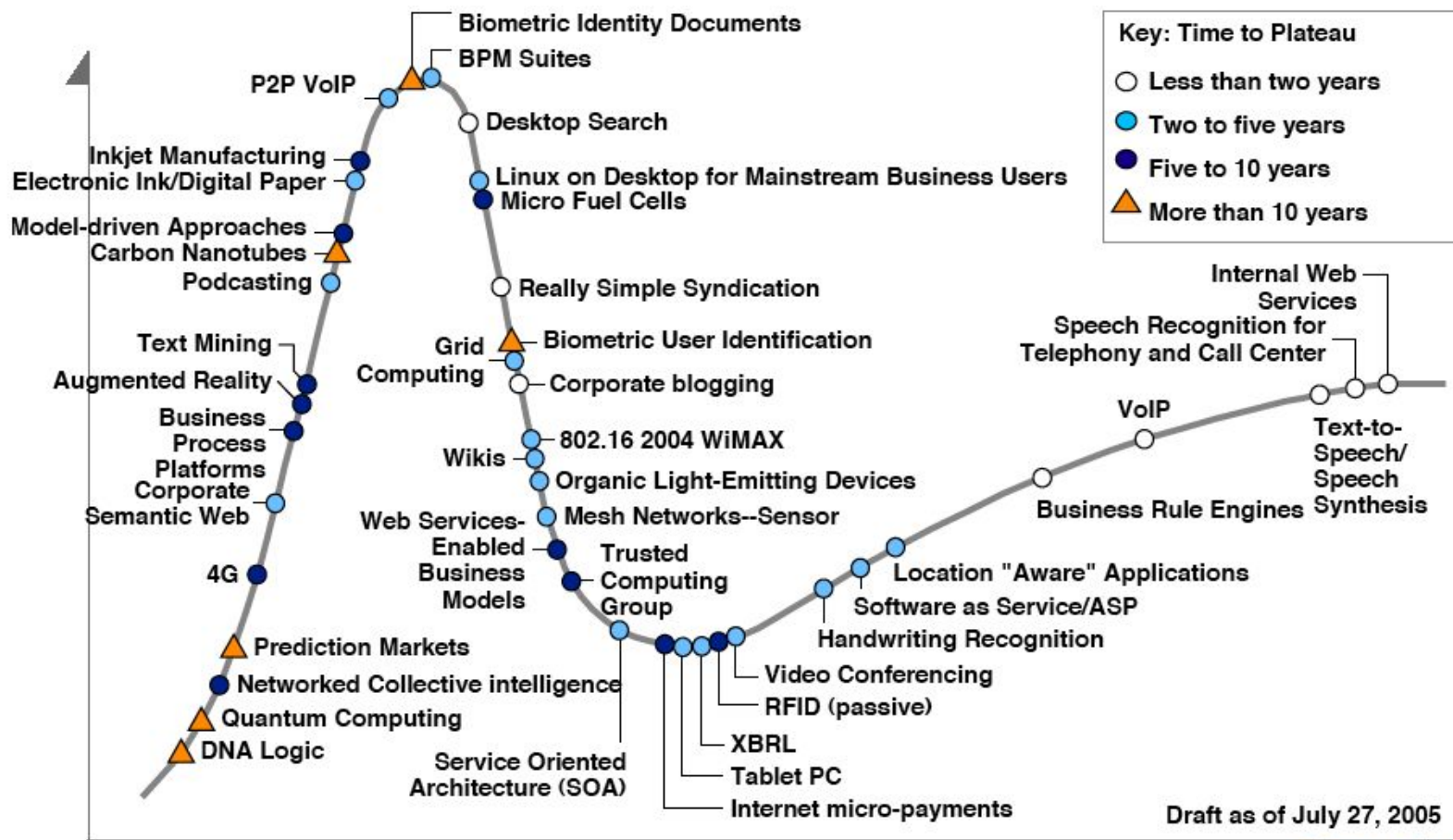
DISTRIBUTED
(C)

- **Maturation**
 - Gulf Coast Network
 - Resource Delivery
 - e.g. TX to AL
 - Disaster Response
 - Telehealth Relief
 - Repatriation
 - Return to Community
- **Expansion & Support**
 - AHMHA & Stream57
 - eCeptionist

Telehealth Model of Care



Telehealth Model of Care



Draft as of July 27, 2005

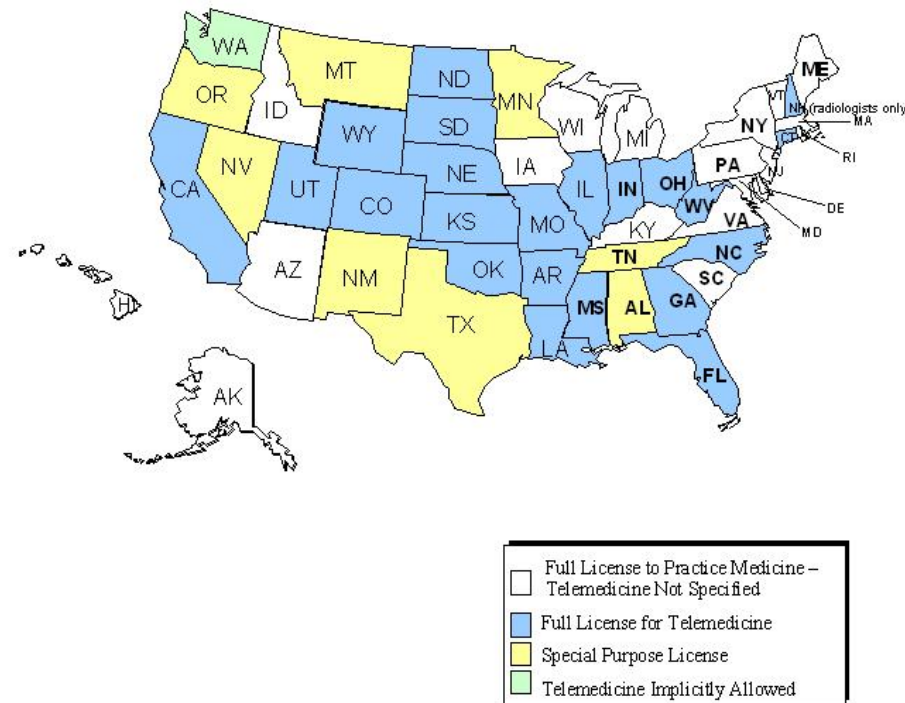
Telehealth Development Issues

- Regulatory
- Financial
- Operations and Management
- Technology Standardization
- Evaluation and Research
- Human Factors and Culture
- Business Modeling

Telehealth Challenges

- Licensure

Medical Licensure Laws Affecting Telehealth



© 2004 Center for Telemedicine Law. All rights reserved.

Telehealth Challenges

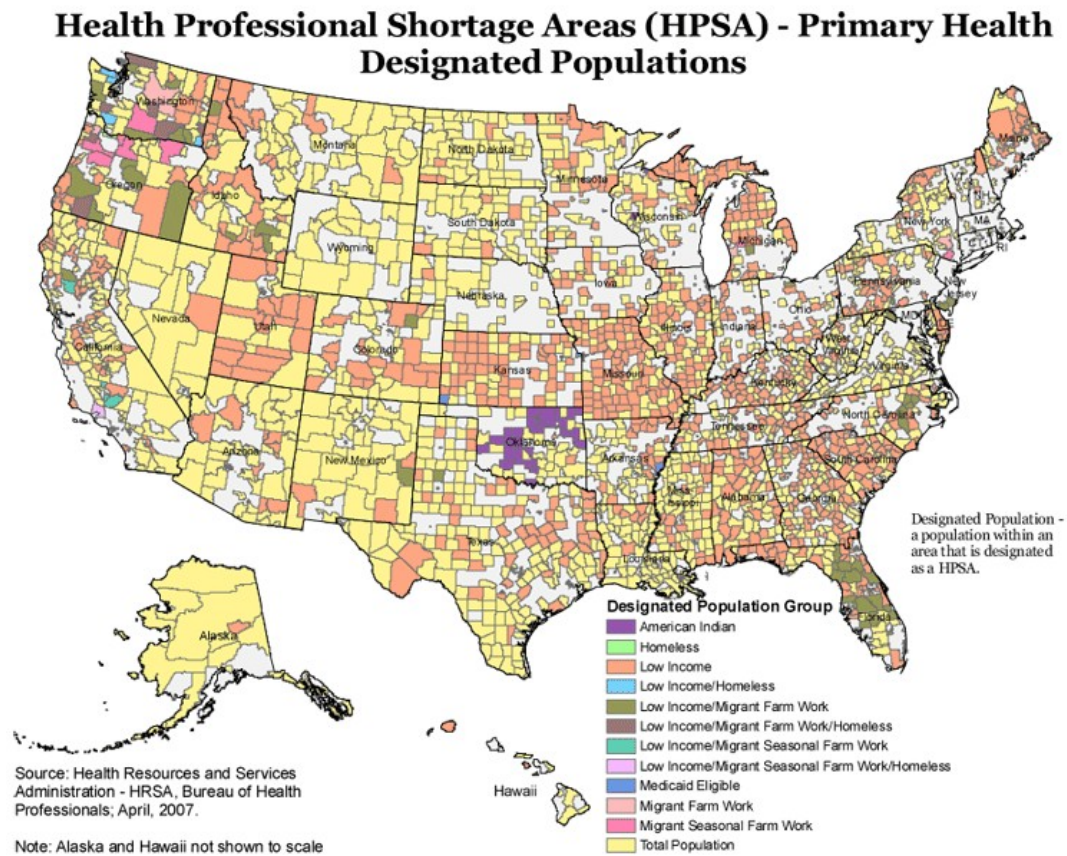
- Licensure
 - FSMB
 - Emergency Declaration (LAC 46:XLV.412)

Telehealth Challenges

- Licensure
 - FSMB
 - Emergency Declaration (LAC 46:XLV.412)
- Malpractice
 - Provider versus Patient Site
 - HRSA FTCA

Telehealth Challenges

- Financial



Telehealth Challenges

- Financial
 - HPSA and NMSA
 - CMS
 - LHHS Appropriations Bill
 - OAT Funding \$13.8 million
 - Senate - Yea. Congress - Nay
 - CONTACT CONGRESS



Conclusions

- Gulf Coast
 - High Need
 - Limited Capacity
 - Complex Solutions
- Telehealth
 - Timely
 - Equivalent
 - Effective
- Policy Issues
 - Licensure
 - Malpractice
 - Reimbursement
 - ACCESS

