



# Assessing Changes in U.S. Funding for International Health

Kyle Kinner  
CARE USA

November 5, 2007

# OUTLINE

- Health is a critical priority
- U.S. is spending more ...?
- New funding is concentrated
- Crucial sectors have lagged
- Outlook: without policy shift—  
similar trajectory
- Recommendations



I AM POWERFUL

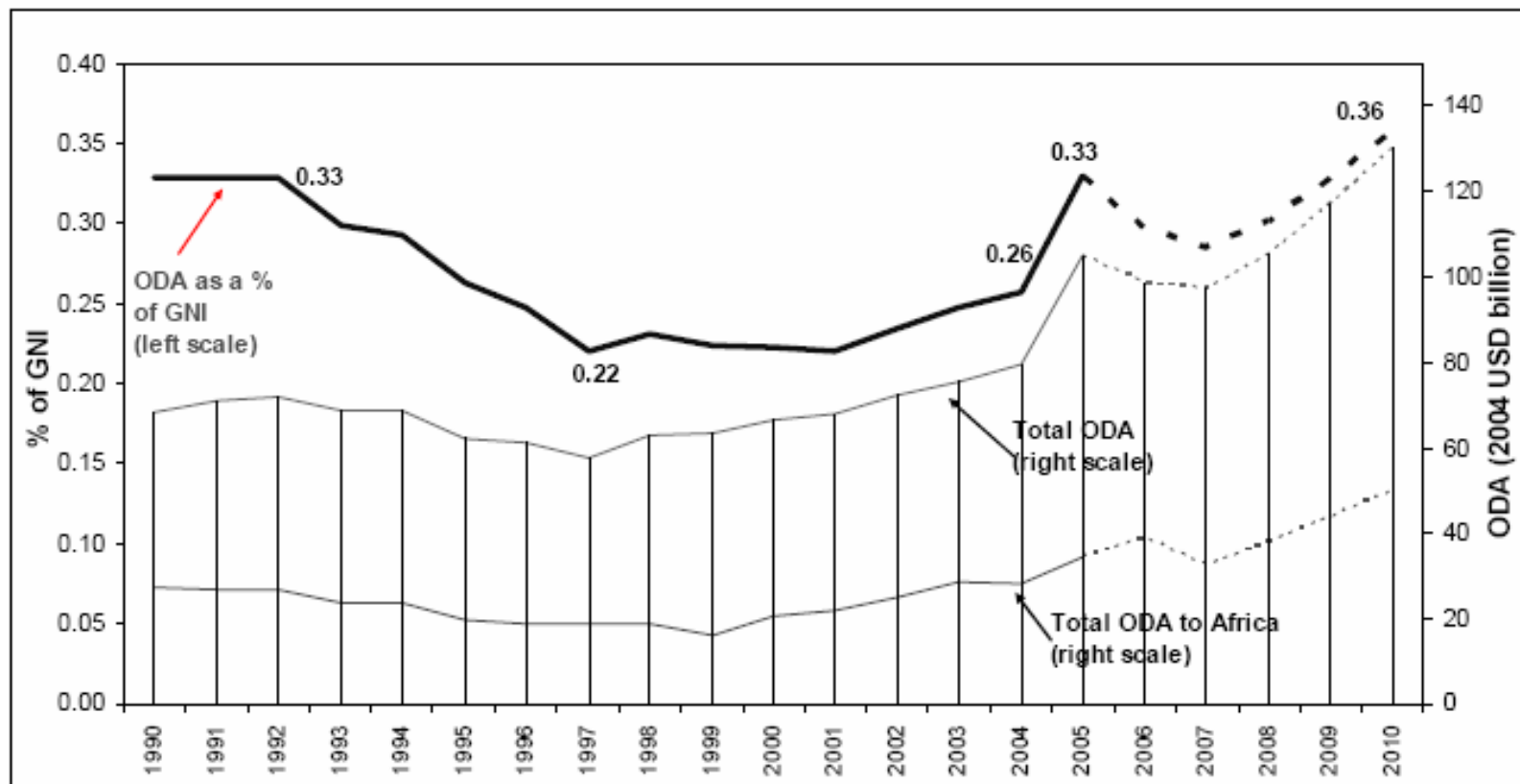


# CONTEXT

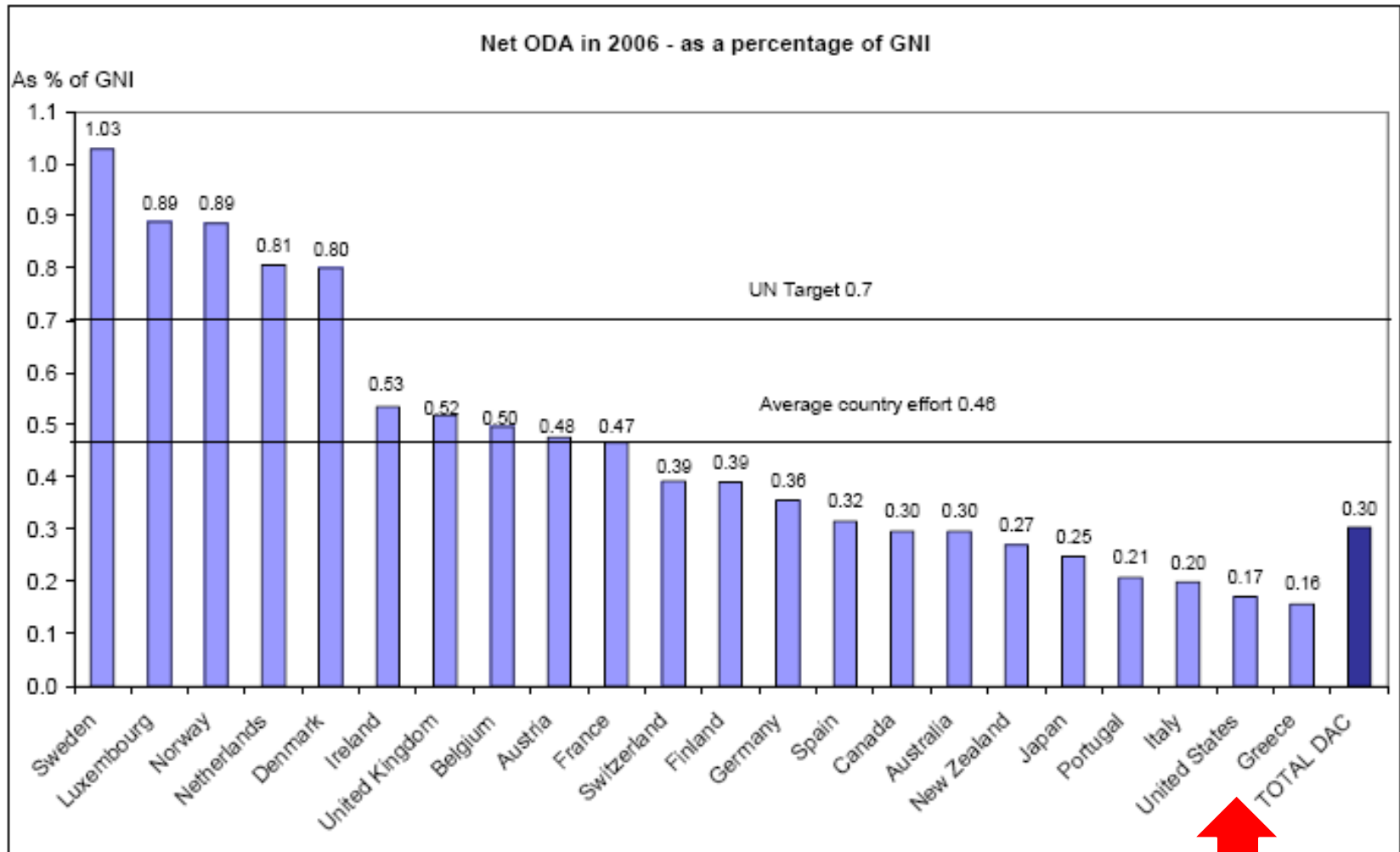
- ODA has increased *but ...*
- Aid as a percentage of GNI has lagged
- U.S. commitment is substantial
- Still a long way to go



## DAC Members' net ODA 1990 – 2005 and DAC Secretariat simulation of net ODA in 2006 and 2010



Source: OECD



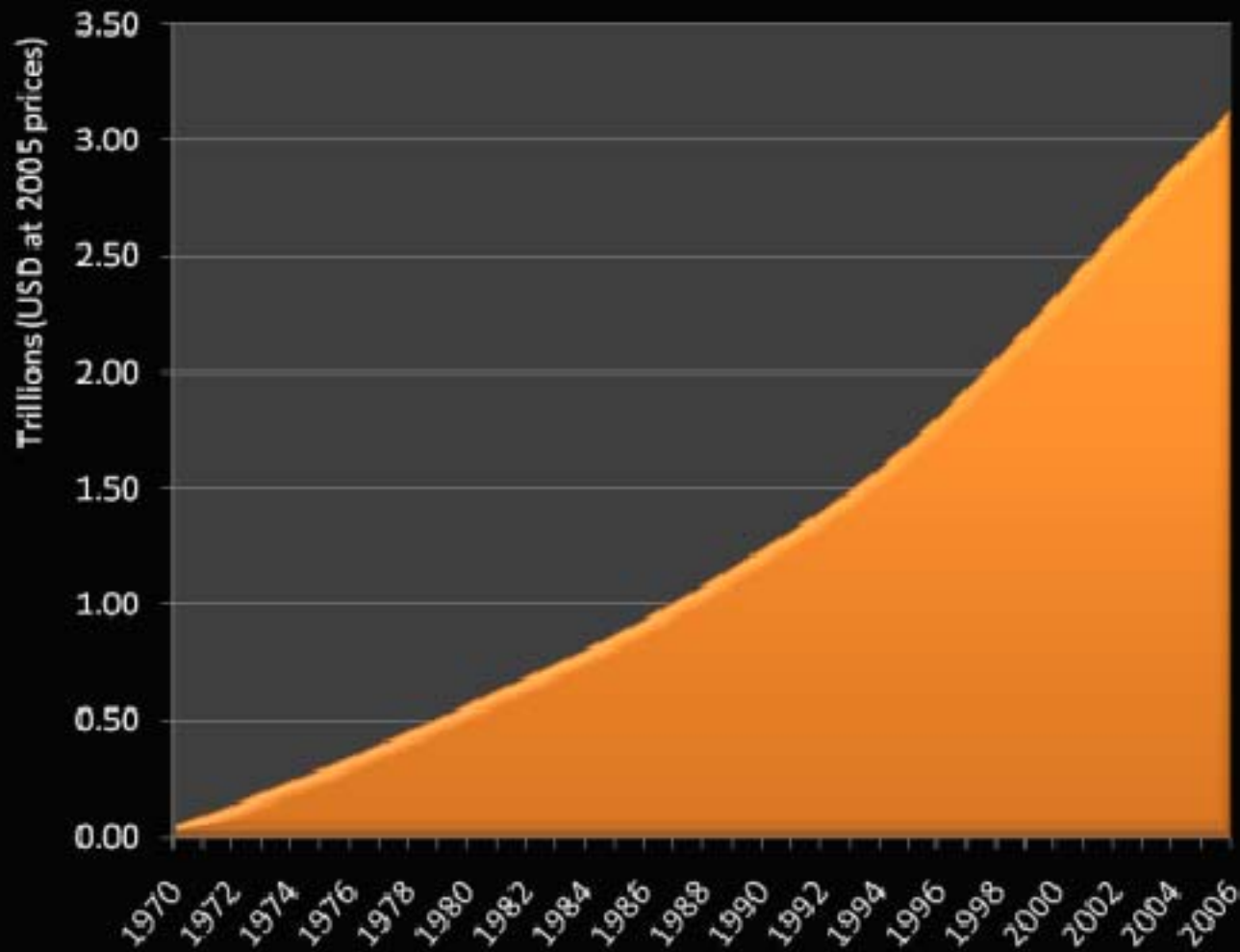
Source: OECD, 3 April 2007.



**U.S.**

Source: OECD

## Cumulative ODA Shortfall



Source: OECD

Source: OECD

# Health is a critical priority

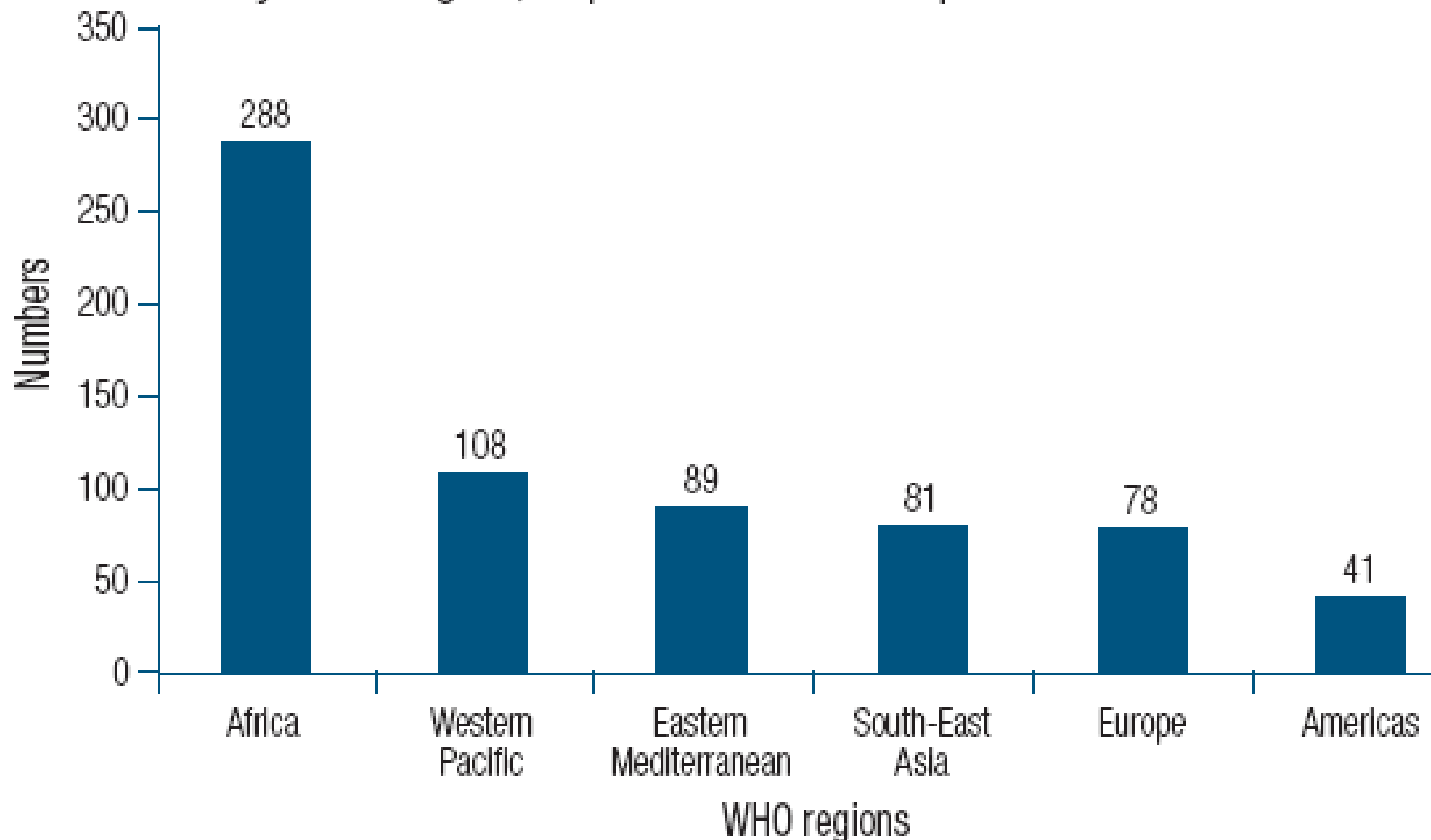
- Population health status affects development
- Health as a growing dimension of global and U.S. security interests
- Humanitarian impulse (high levels of preventable mortality/morbidity worldwide)



I AM POWERFUL



**Figure 1** Verified events of potential international public health concern, by WHO region, September 2003–September 2006



Total number of cases = 685

**SOURCE:** World Health Report (WHO); 2007: x.



# U.S. is spending more?

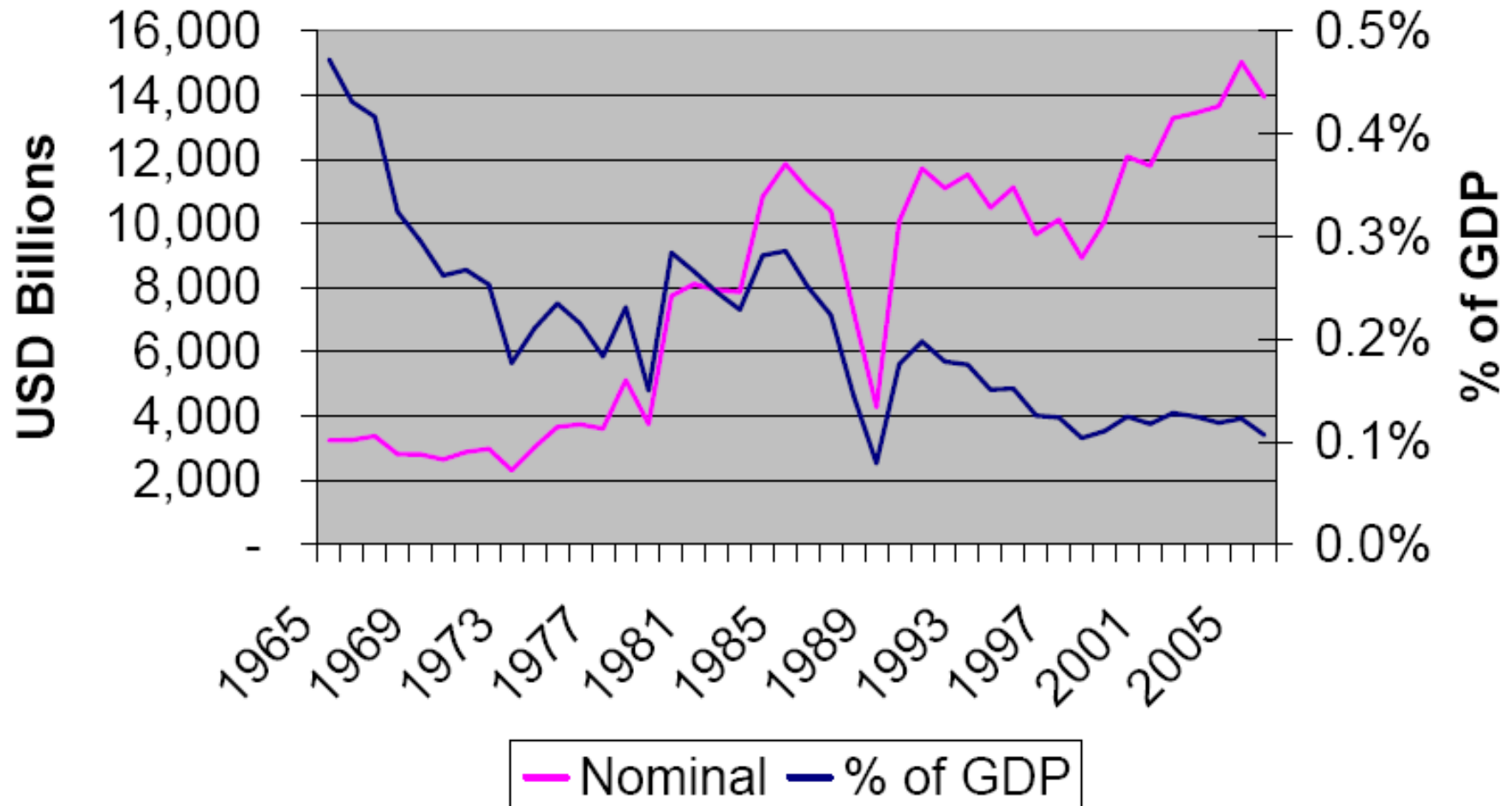
- 4.3x more than FY65
- As a % of GDP – a lot less  
(.47 in FY65, .11 in FY06)
- Lagged growth rate (Int Asst, -3.6%,  
versus 0.4%, total outlays, FY65-06 (% of GDP))
- Apparent close correlation with  
domestic discret. expend.



I AM POWERFUL

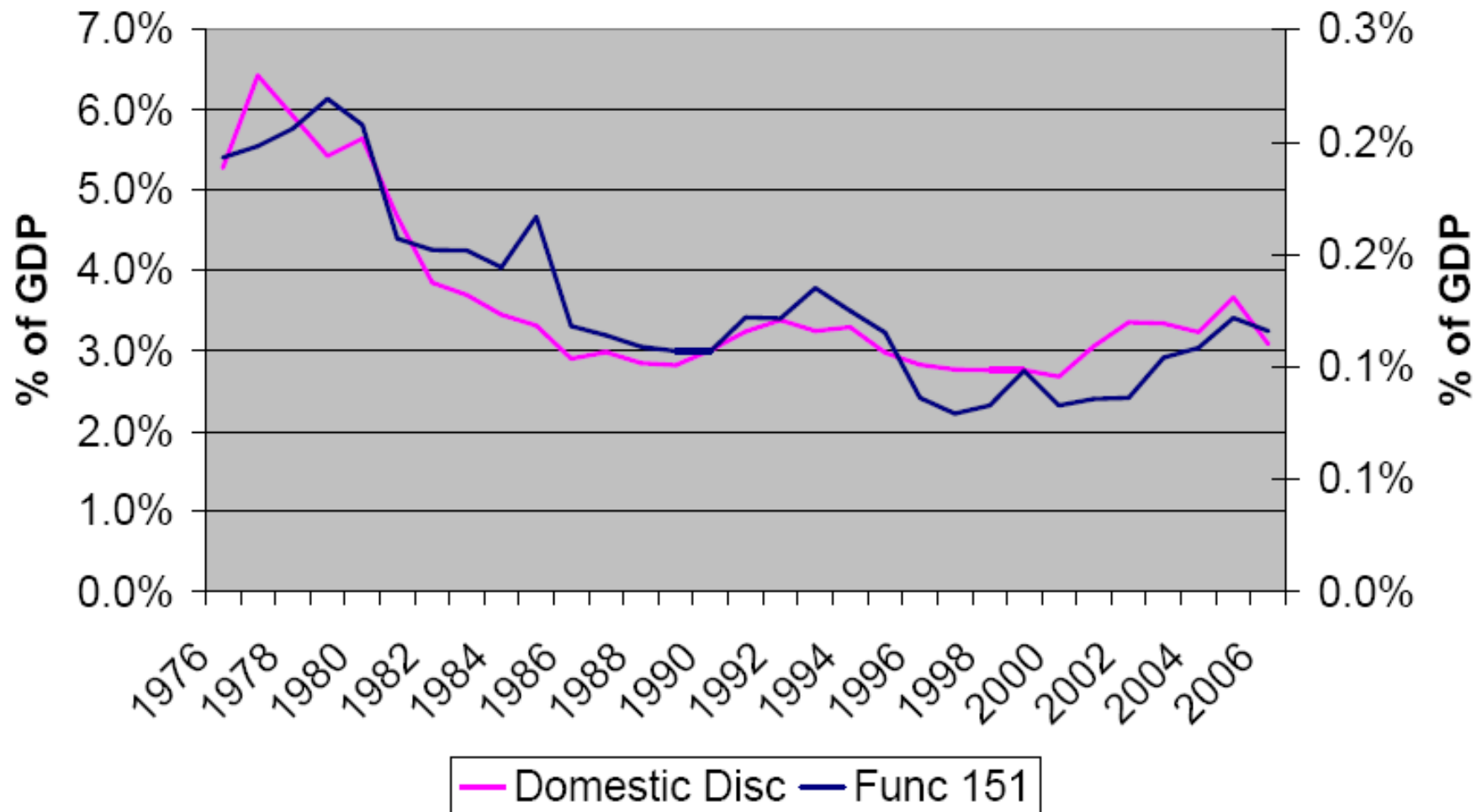


## U.S. Foreign Assistance Outlays (FY65-06), Actual \$ versus % of GDP



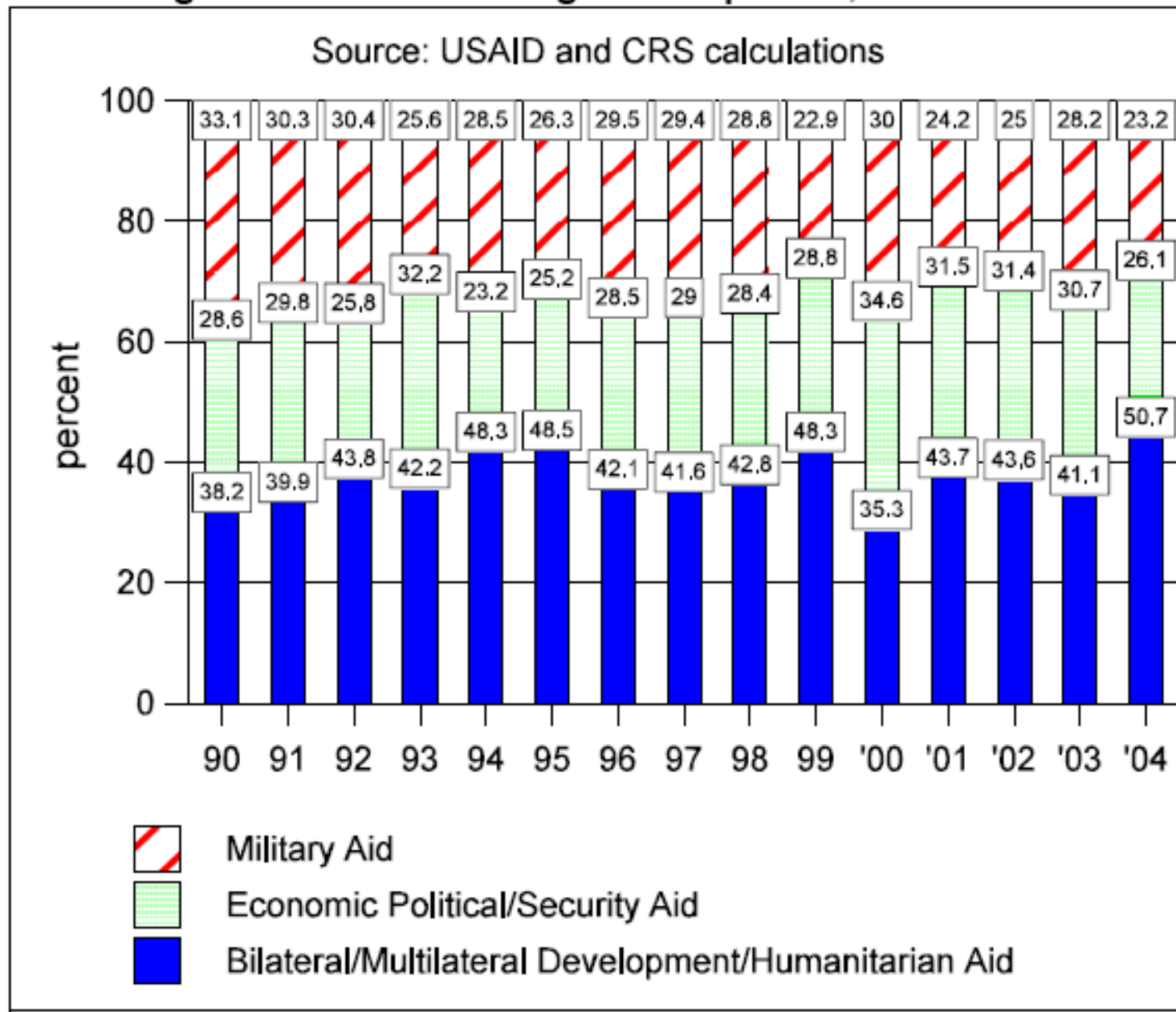
Source: OMB, 2007.

## Comparing Func 151 to Domestic Discretionary Expenditures (FY76-06, % of GDP)



Source: OMB, 2007.

**Figure 2. Shifts in Program Emphasis, 1990-2004**



Source: Tarnoff, Knowles. CRS Pub 98-916, 2004; 8.

# New funding is concentrated

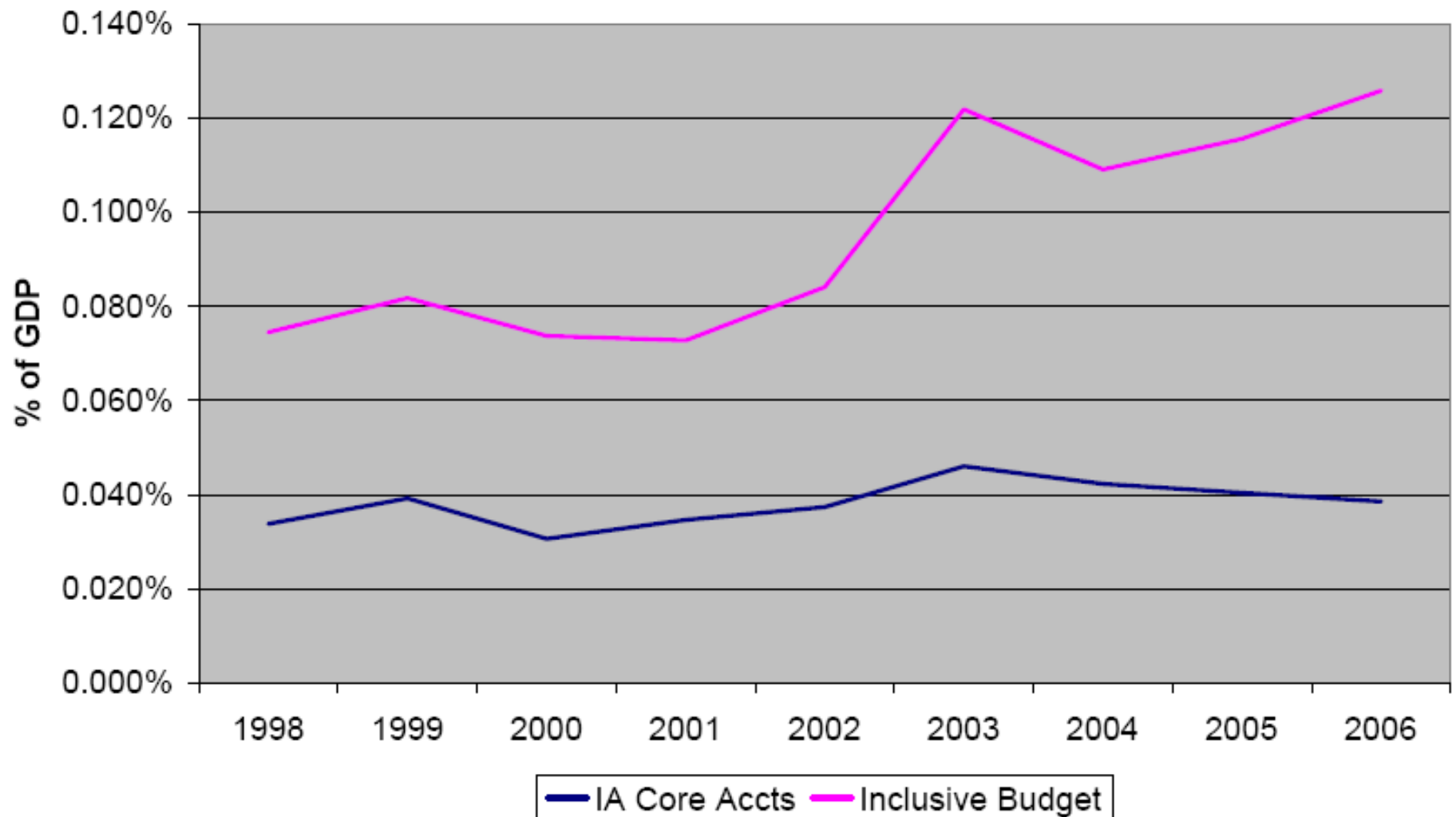
- Focusing on ‘poverty-fighting’ foreign assistance – we see shift in relative aid composition
  - ❖ **Winners:** PEPFAR, MCC
  - ❖ **Stuck:** PKO, IDFA, CSH (w/o AIDS), TI
  - ❖ **Losers:** ERMA, IOP, Food, MRA, DA, ESF



I AM POWERFUL

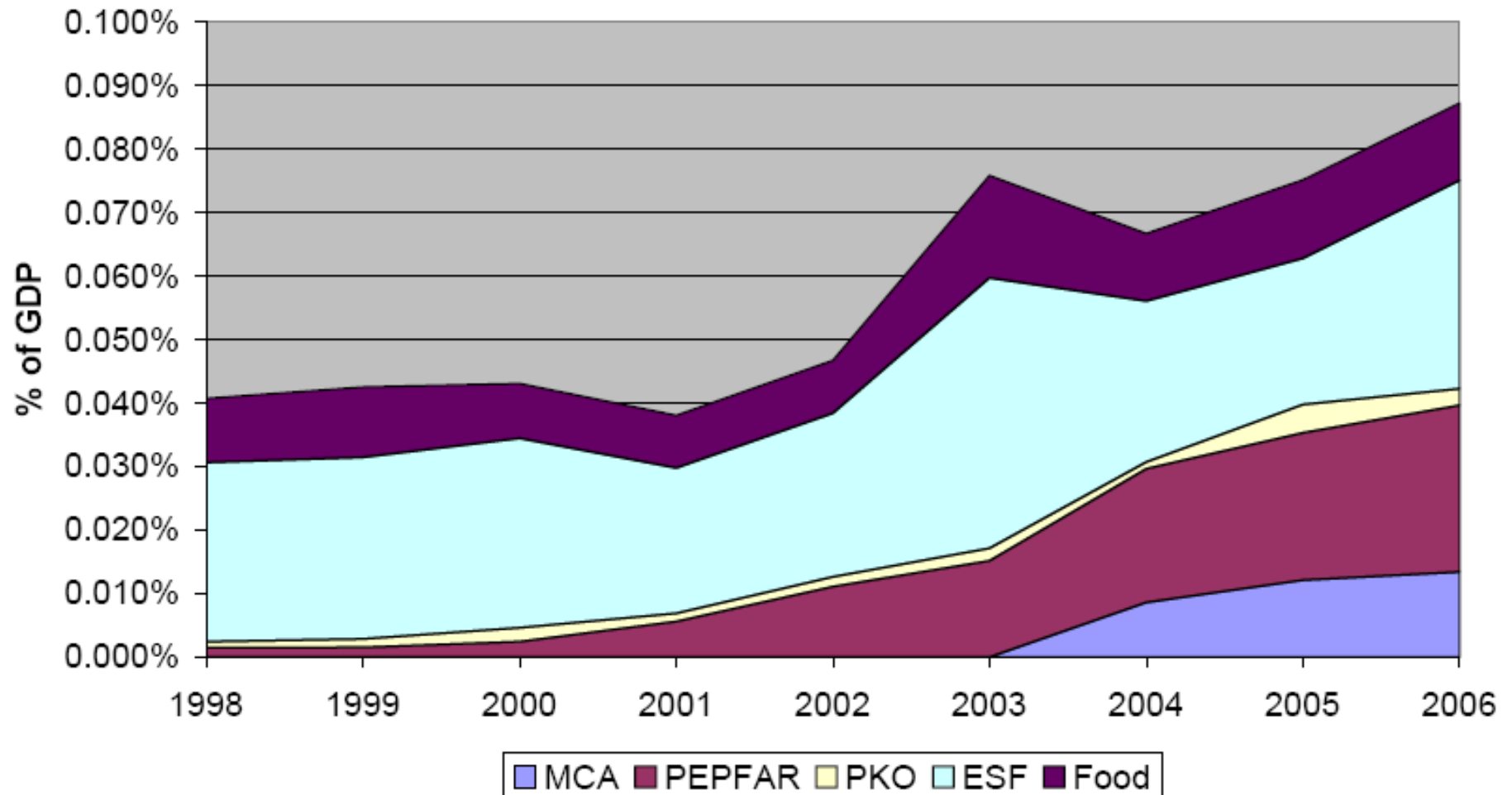


## Comparing IA Core Accounts to a More Inclusive Foreign Aid Budget (FY98-06, % of GDP)



Source: OMB, 2007.

## Decomposing non-IA Budget Objects (FY98-06, % of GDP)



Source: OMB, 2007.

# Crucial sectors have lagged

- CS/MH
- SRH/FP
- EID/AI
- Basic research
- PH Infrastructure

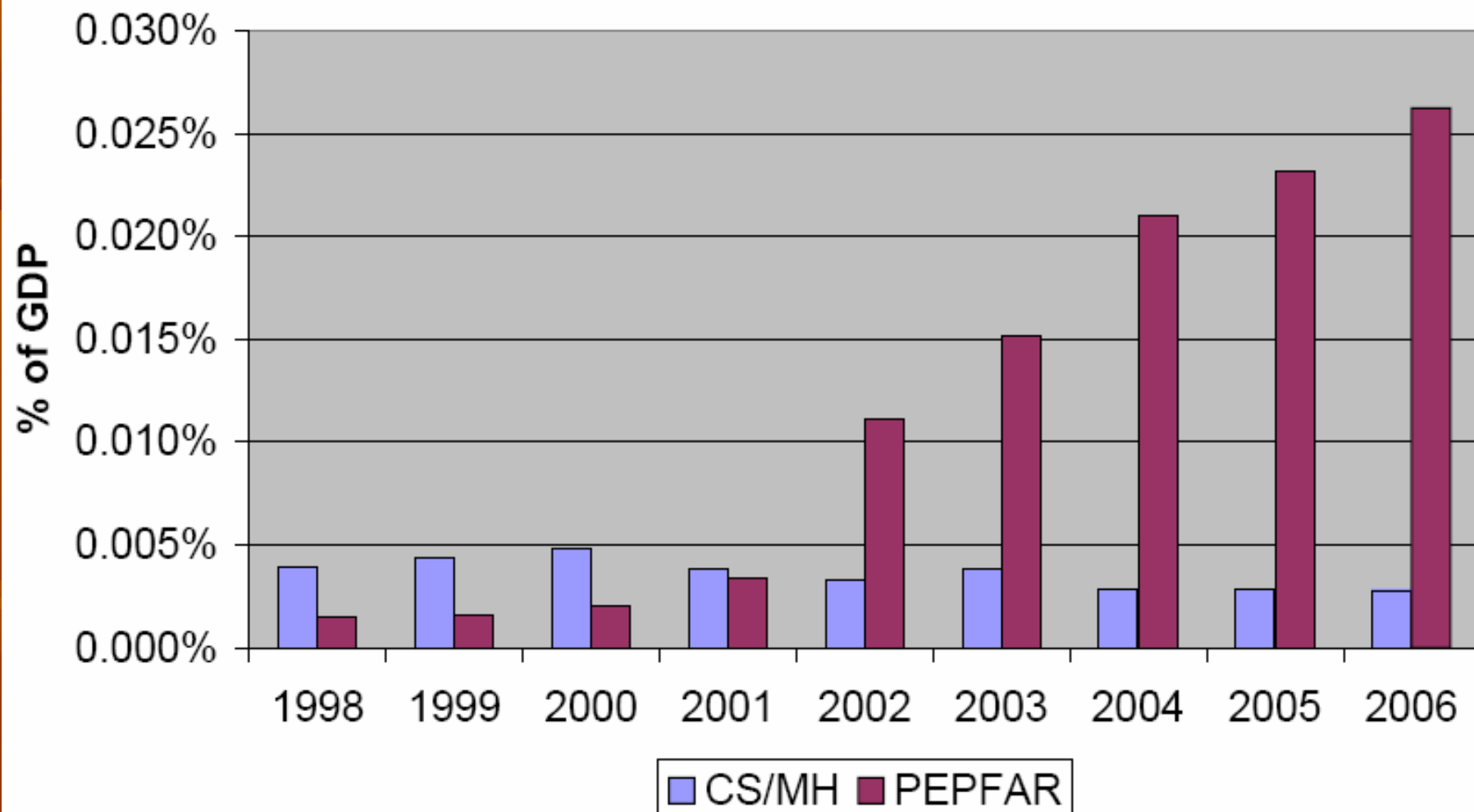


I AM POWERFUL



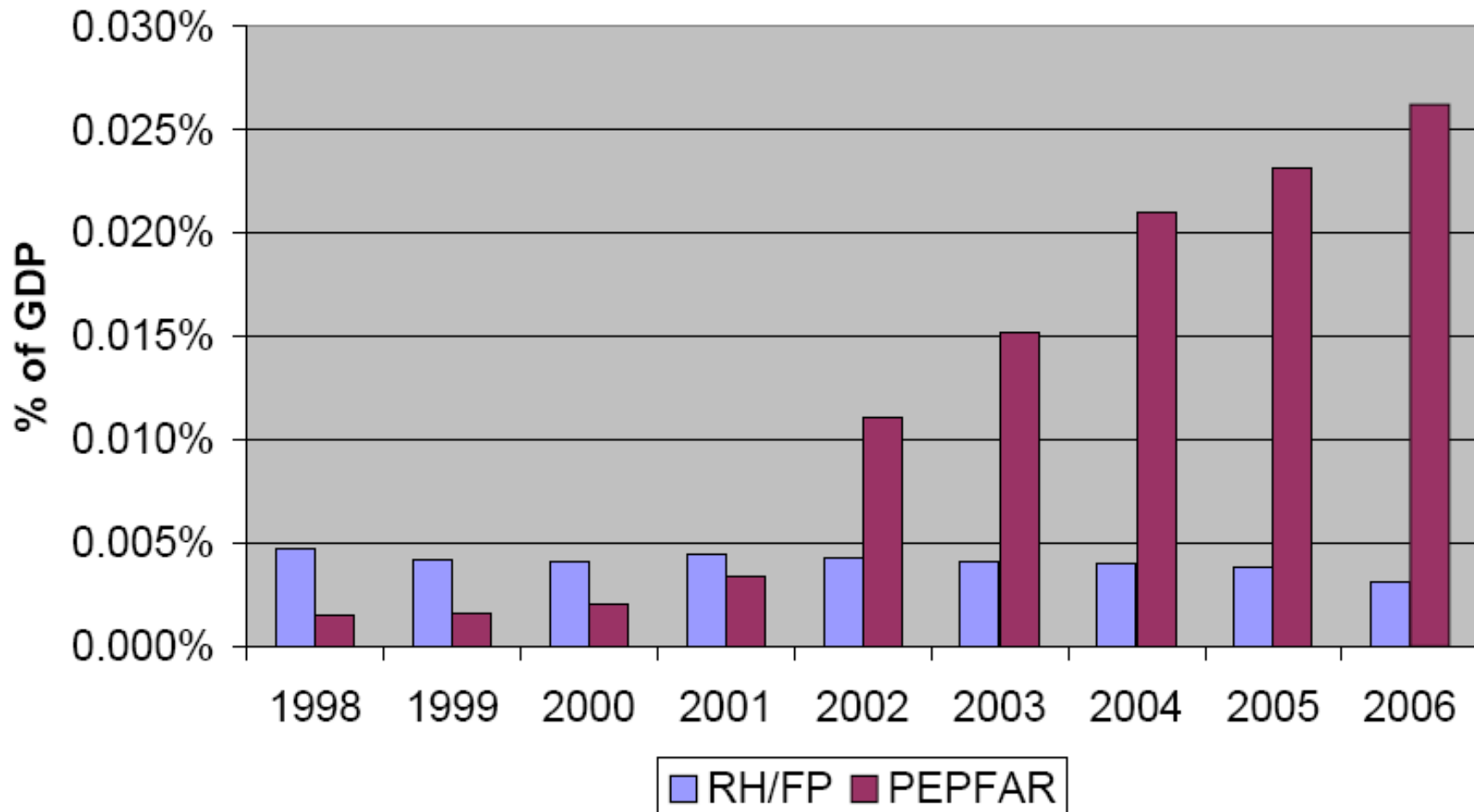


## Comparing Child Survival/Maternal Health with PEPFAR-AII (FY98-06, % of GDP)



Source: OMB, 2007.

## Comparing RH/FP-All with PEPFAR-All (FY98-06, % of GDP)



Source: OMB, 2007.

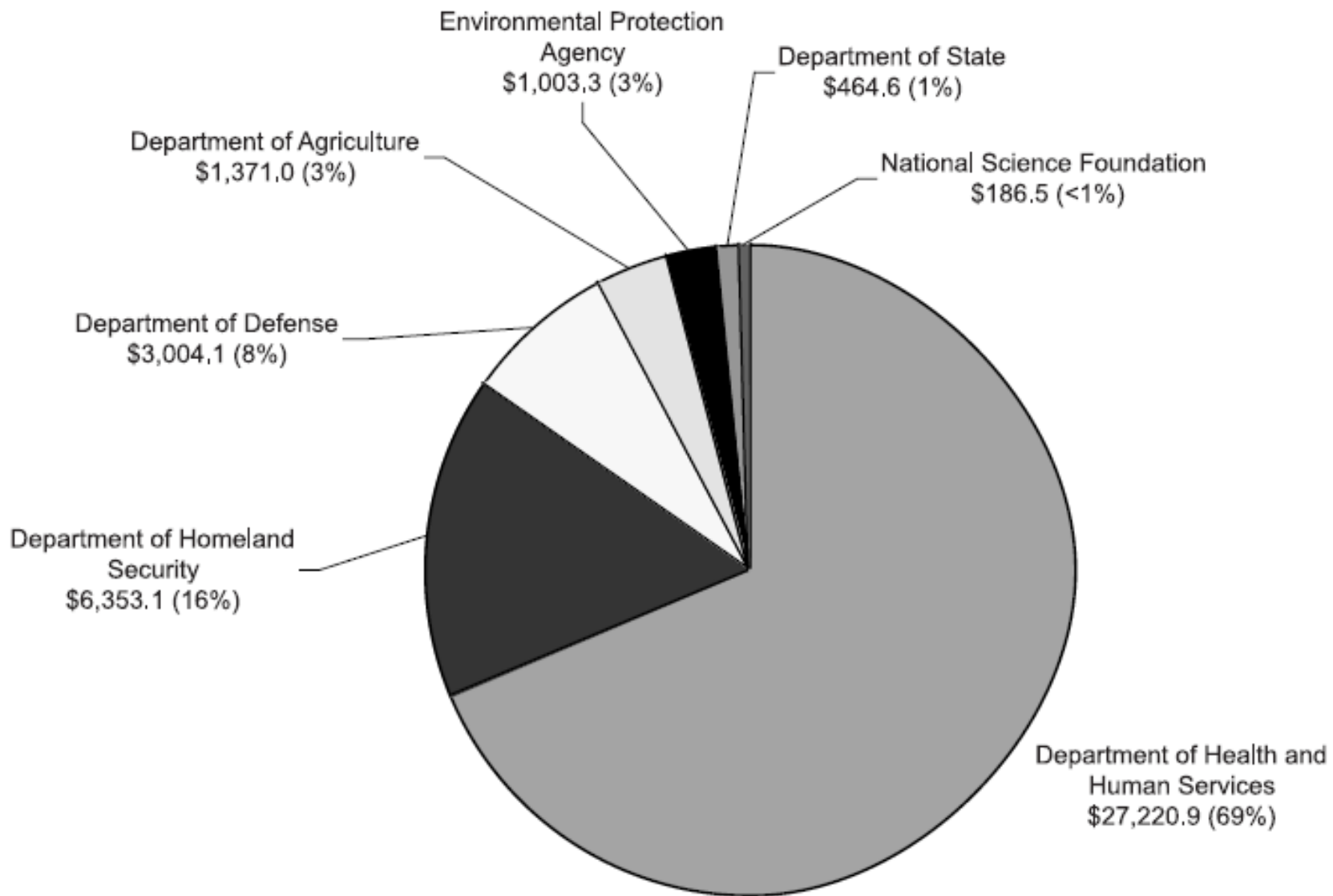
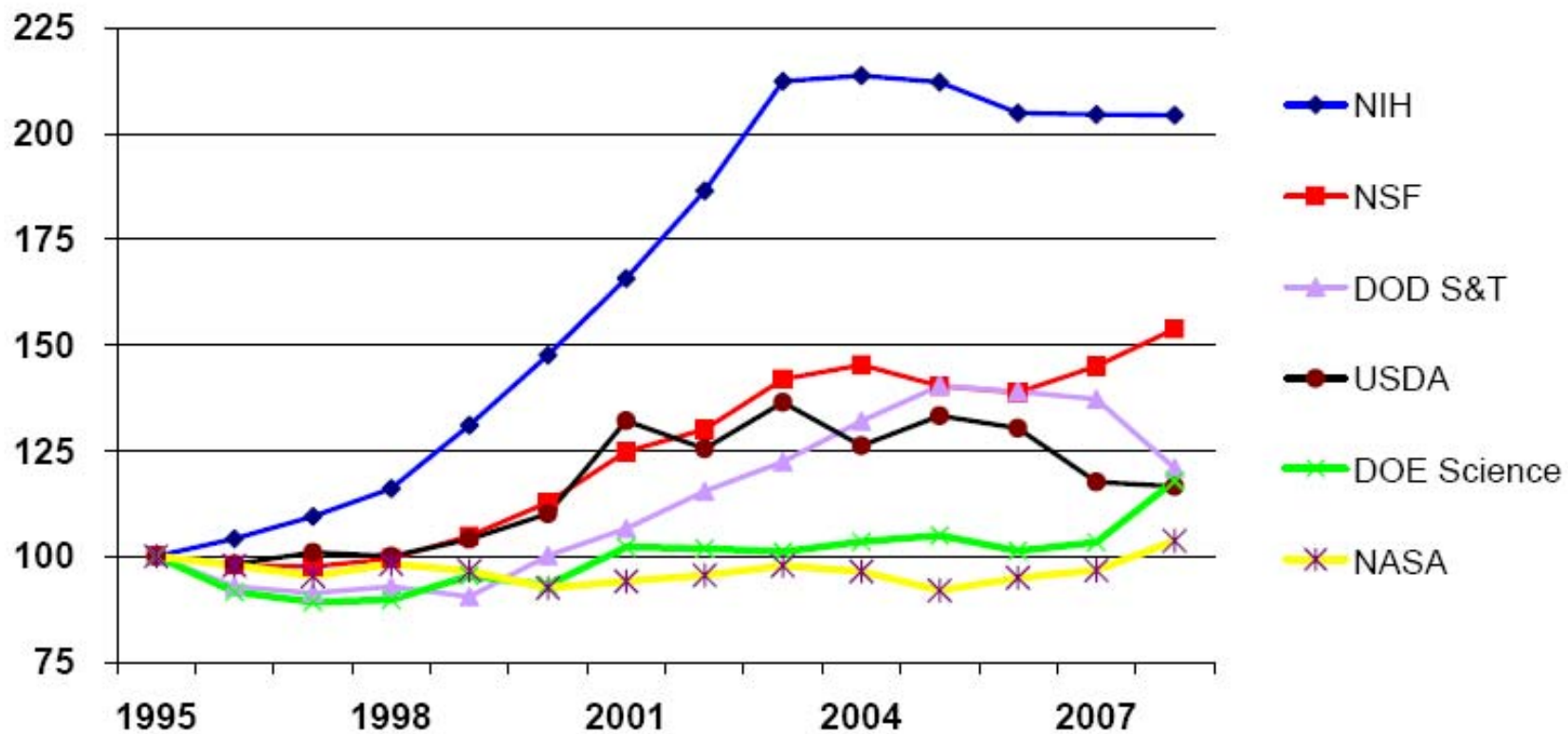


Figure 2. Cumulative Civilian Biodefense Funding by Agency, FY2001–FY2008 (in millions)

Source: Franco, Deitch; *Biosec Bioterror*. 2007; 5:119.

## Trends in Federal R&D, FY 1995-2008 (House)\*

selected agencies in constant dollars, FY 1995=100



Source: AAAS, 2007.

# Outlook: without policy shift— similar trajectory

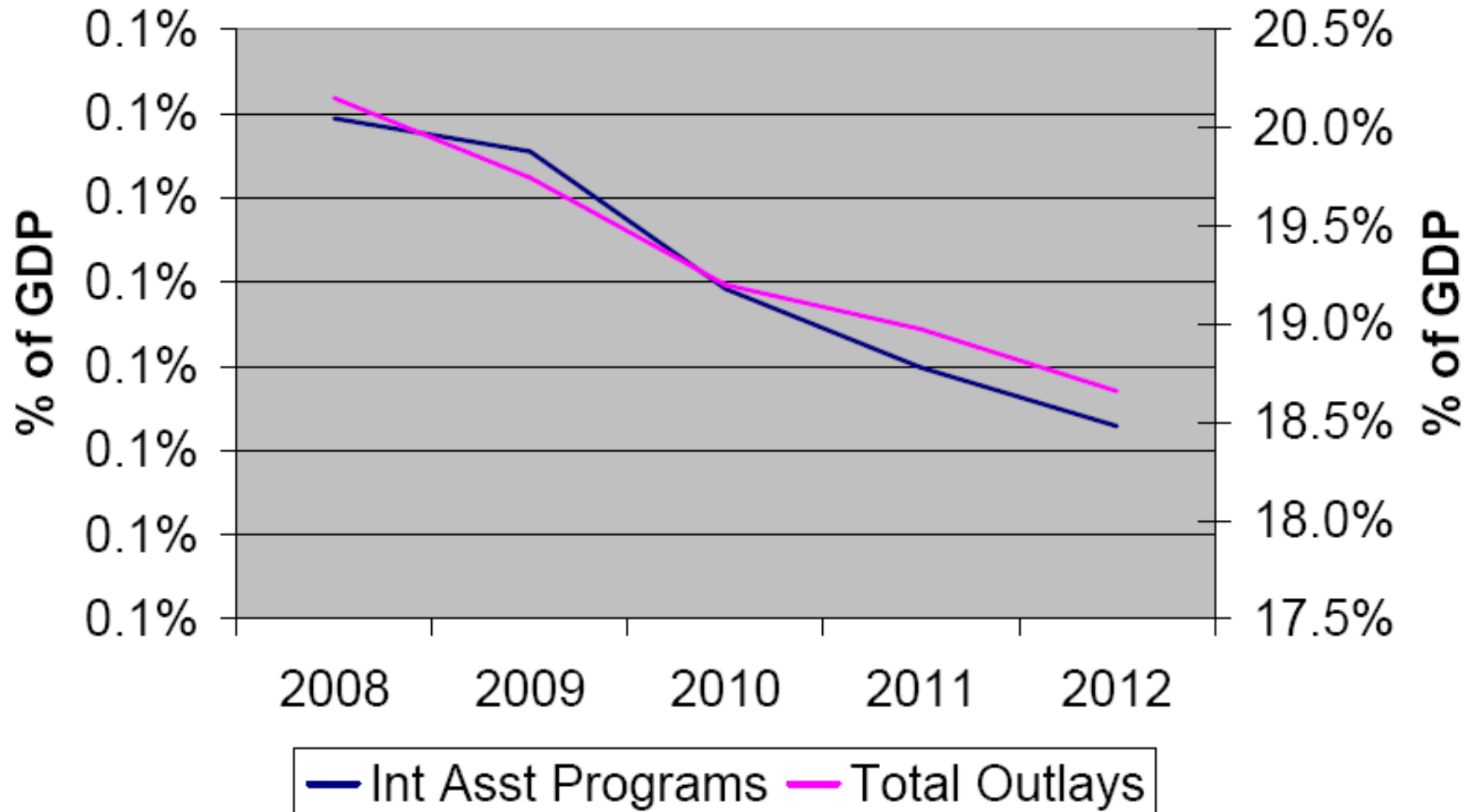
- FY08 President's Request  
(OVER FY07: CSH, -9.0%; CS/MH, -3.0%;  
SRH/FP, -25.4%, PEPFAR, 20.1%)
- FY08-12 OMB Forecast  
(Int Asst, -3.9%; total outlays, -1.9% (% OF GDP))
- FY08 H/S higher-of number  
(better, but Presidential veto looming)
- FY08 Int Aff as a % of GDP  
versus 0.7 target – *long way to go*



I AM POWERFUL



## OMB Forecast - Int Assistance Programs versus Total Outlays (FY08-12, % of GDP)



Source: OMB, 2007.

# Recommendations

- Increase U.S. foreign aid overall
- All boats should rise – growth convergence
- Build infrastructure
- Greater focus on the MDGs
- Engage underlying drivers that affect vulnerability/health



I AM POWERFUL



# Contact Info

Kyle Kinner  
CARE USA  
**(202) 595-2800**  
[kkinner@care.org](mailto:kkinner@care.org)



I AM POWERFUL

