



Agency for Healthcare Research and Quality

Advancing Excellence in Health Care

www.ahrq.gov

Medical Expenditure Panel Survey

HEALTH INSURANCE DATA



Health Insurance Public Use Files, 2005-2006

- **MEPS HC-093:
2006 P9R3/P10R1 Population
Characteristics**
- **MEPS HC-095:
2005 Person Round Plan Public Use
File**
- **MEPS HC-097:
2005 Full Year Consolidated Data File**



MEPS HC-093: 2006 P9R3/P10R1 Health Insurance

- **TRINW13X COV BY TRICARE AT INTERVIEW – EDITED**
- **MCARE13X COV BY MEDICARE – EDITED**
- **MCAID13X COV BY MEDICAID – EDITED**
- **OTPUBA13 COV BY/PAYS OTH GOV MCAID HMO**
- **OTPUBB13 COV BY OTH PUBLIC NOT MCAID HMO**
- **STPRG13 COV BY STATE SPECIFIC PROGRAM**
- **PUB13X COV BY PUBLIC INS - EDITED**



MEPS HC-093: 2006 P9R3/P10R1 Health Insurance

- **PRIEU13** **COV BY PRIV EMPL/UNION PLAN**
- **PRIDK13** **COV BY PRIV DK PLAN**
- **PRING13** **COV BY NONGROUP PLAN**
- **PRIOG13** **COV BY OTH GROUP PLAN**
- **PRIS13** **COV BY SELF-EMP-1 INS**
- **PRIOUT13** **COV BY HOLDER OUTSIDE RU**
- **PRIV13** **COV BY PRIVATE INS**
- **INSRD13X** **INSURED - EDITED**



MEPS HC-093: 2006 P9R3/P10R1 Health Insurance

- **HPRIEU13** **HOLDER OF PRIV
EMPL/UNION PLAN**
- **HPRIDK13** **HOLDER OF PRIV DK PLAN**
- **HPRING13** **HOLDER OF NONGROUP
PLAN**
- **HPRIOG13** **HOLDER OF OTH GROUP
PLAN**
- **HPRIS13** **HOLDER OF SELF-EMP-1 INS**
- **HPRIV13** **HOLDER OF PRIV INS PLAN**

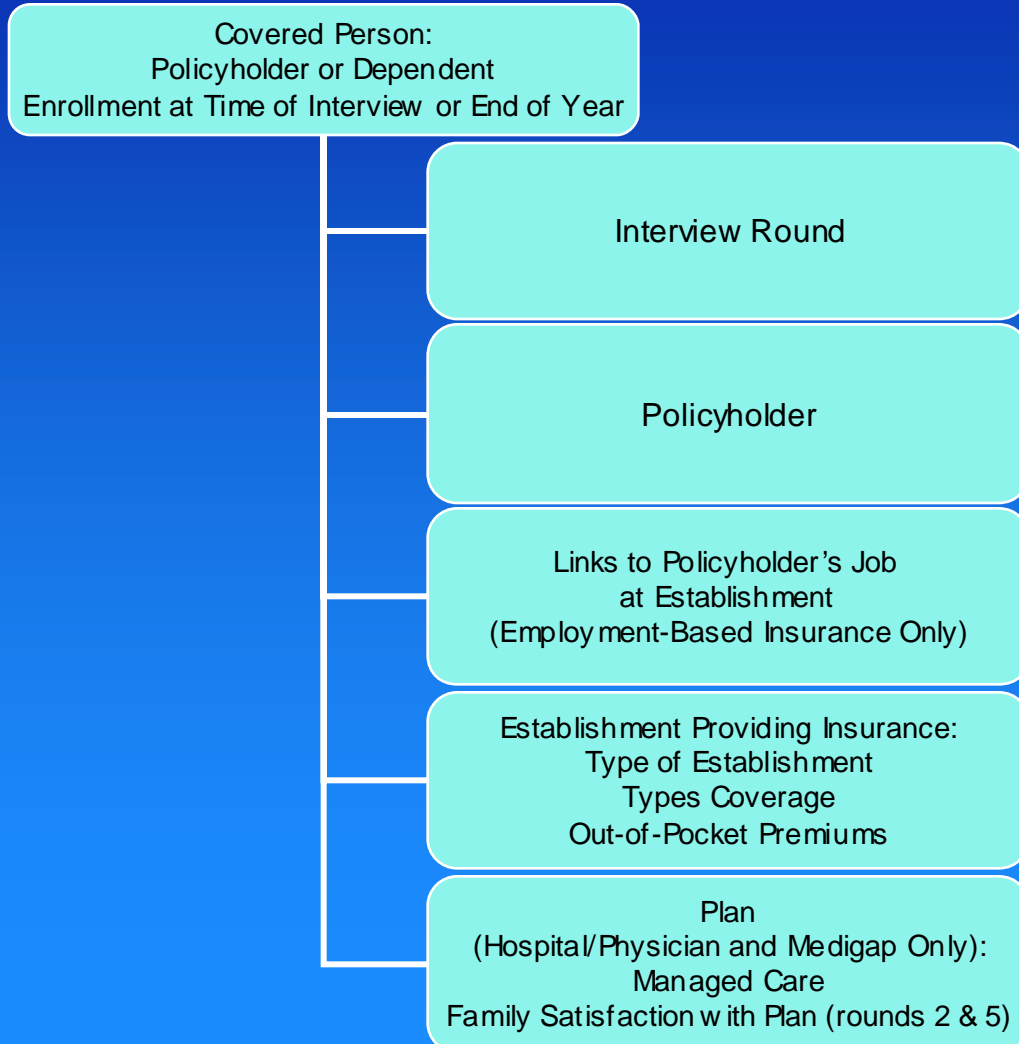


MEPS HC-095: 2005 Person Round Plan Public Use File (PRPL)

- **The PRPL file is designed to reflect the sometimes complex and dynamic relationships between people and their private insurance.**
- **The PRPL file contains records for persons with private insurance providing hospital/physician, medigap, dental, vision, or prescription medication coverage**
- **The PRPL file contains variables pertaining to managed care and satisfaction with plan coverage.**
- **Questions on out of pocket premiums were asked of all policyholders (starting in 2001) with private insurance coverage.**



Conceptual Overview of PRPL File





MEPS HC-097: 2005 Full Year Consolidated Data File

Month by month indicators

Public

- TRIJA05X-TRIDE05X - TRICARE
- MCRJA01X-MCRDE05X - Medicare
- MCDJA01X-MCDDE05X - Medicaid/SCHIP
- OPAJA05-OPADE05 - managed care, other public insurance
- OPBJA05 - OPBDE05 - not managed care, other public insurance
- STAJA05-STADE05 - state-specific program participation
- PUBJA05X-PUBDE05X - indicates public insurance in month



MEPS HC-097: 2005 Full Year Consolidated Data File

Month by month indicators

Private

- PEGJA05-PEGDE05 - employer/union group insurance
- PNGJA05-PNGDE05 - non-group private insurance
- POGJA05-POGDE05 - other group private insurance
- PDKJA05-PDKDE05 - don't know source of insurance
- POUJA05-POUDE05 - policy holder is outside the household
- PRSJA05-PRSDE05 - self-employed with firm size of 1
- PRIJA05-PRIDE05 - indicates private insurance in month
- Policy Holders (repeat of Private) "H"



MEPS HC-097: 2005 Full Year Consolidated Data File

Month by month indicators

Summary variables

- **PUBJA05X-PUBDE05X** - indicates public insurance in month
- **PRIJA05-PRIDE05** - indicates private insurance in month
- **INSJA05X-INSDE05X** - indicates any insurance in month
- **UNINS05** – uninsured all of 05
- **INSCOV05** – health insurance indicator 05



MEPS HC-097: 2005 Full Year Consolidated Data File

INSCOV05

- 1 = Any Private during 2005
- 2 = Public Only during 2005
- 3 = Uninsured all of 2005



MEPS HC-097: 2005 Full Year Consolidated Data File

Managed Care

- Medicaid or SCHIP HMO
- Medicaid/SCHIP Gatekeeper Plans

- Private HMOs
- Private HMO Plans that Pay for Visits to Non-Plan Doctors
- Private Gatekeeper Plans
- Private Gatekeeper Plans that Pay for Visits to Non-Plan Doctors
- Private Plan that has a Book or List of Doctors
- Private Plan that has a Book or List of Doctors that Pays for Non-Plan Visits



MEPS HC-097: 2005 Full Year Consolidated Data File

Summary variables (ever covered during year)

- **TRIEV05** - ever covered by TRICARE
- **MCREV05** - ever covered by Medicare
- **MCDEV05** - ever covered by Medicaid
- **OPAEV05** - ever covered managed care, other public insurance
- **OPBEV05** - ever covered not managed care, other public insurance
- **PRVEV05** - ever covered by private health insurance



MEPS HC-097: 2005 Full Year Consolidated Data File

- **DENTIN31/52/53 – round specific variables**
 - Indicates covered by a private health insurance plan that included at least some dental coverage
- **PMEDIN31/52/53 – round specific variables**
 - Indicates covered by a private health insurance plan that included at least some dental coverage



MEPS-IC Survey

- **Nationwide, annual survey of both private and public sector establishments**
- **Funded by the Agency for Healthcare Research and Quality (AHRQ)**
- **Conducted by the U.S. Census Bureau**
- **Survey data available for 1996 through 2005**



Types of Information Collected

- Establishment-level (location) characteristics
- Health insurance plan characteristics
- Firm-level (company) characteristics



Establishment-level (Location) Characteristics

- Number of active employees
- Whether or not establishment offers health insurance
- Number of plans offered
- Number of employees eligible for health insurance and number enrolled (full-time and part-time employees separately).
- Workforce characteristics (% women, union, over 50 years old, by wage level)



Health Insurance Plan Characteristics

- Premiums (single, employee plus one, family)
- Contributions
- Plan types (by type of provider arrangement)
- Self-Insured / Fully-Insured
- Enrollments (single/family coverage)
- Deductibles / Copayments
- Some plan benefits
- “Fringe” benefits



Firm (Company) Characteristics

- Size
- Industry
- Age of firm
- Retiree offerings
- Employee characteristics



MEPS-IC Sample Design

- **Sample of private establishments drawn from the Census Bureau's Business Register**
 - Approximately 42,000 establishments sampled
- **Sample of state and local governments drawn from the Census Bureau's Census of Governments**
 - Approximately 2,000 governmental units sampled
- **(No longer collected) Sample of employers directly linked to the MEPS Household Survey**
 - Last year available is 2001



MEPS-IC Sample Design

- Designed to make National, State, and some Metro area estimates
- Designed to make year-to-year estimates
- Data is Census Bureau Confidential - Public Use Files are not available
- Methodology Reports available on website