

Health Resources and Services Administration
Maternal And Child Health Bureau

Healthy Start: Learning Communities for Interconceptional Health

Maribeth Badura, M.S.N.

Dept. of Health and Human Services (HHS)
Health Resources and Services Administration (HRSA)
Maternal and Child Health Bureau (MCHB)
Division of Healthy Start and Perinatal Services (DHSPS)

November 2007



HEALTHY START

Goals:

- reduce racial and ethnic disparities in access to and utilization of health services through a lifespan approach;
- improve the local health care system; and
- increase consumer/community voice and participation in health care decisions.

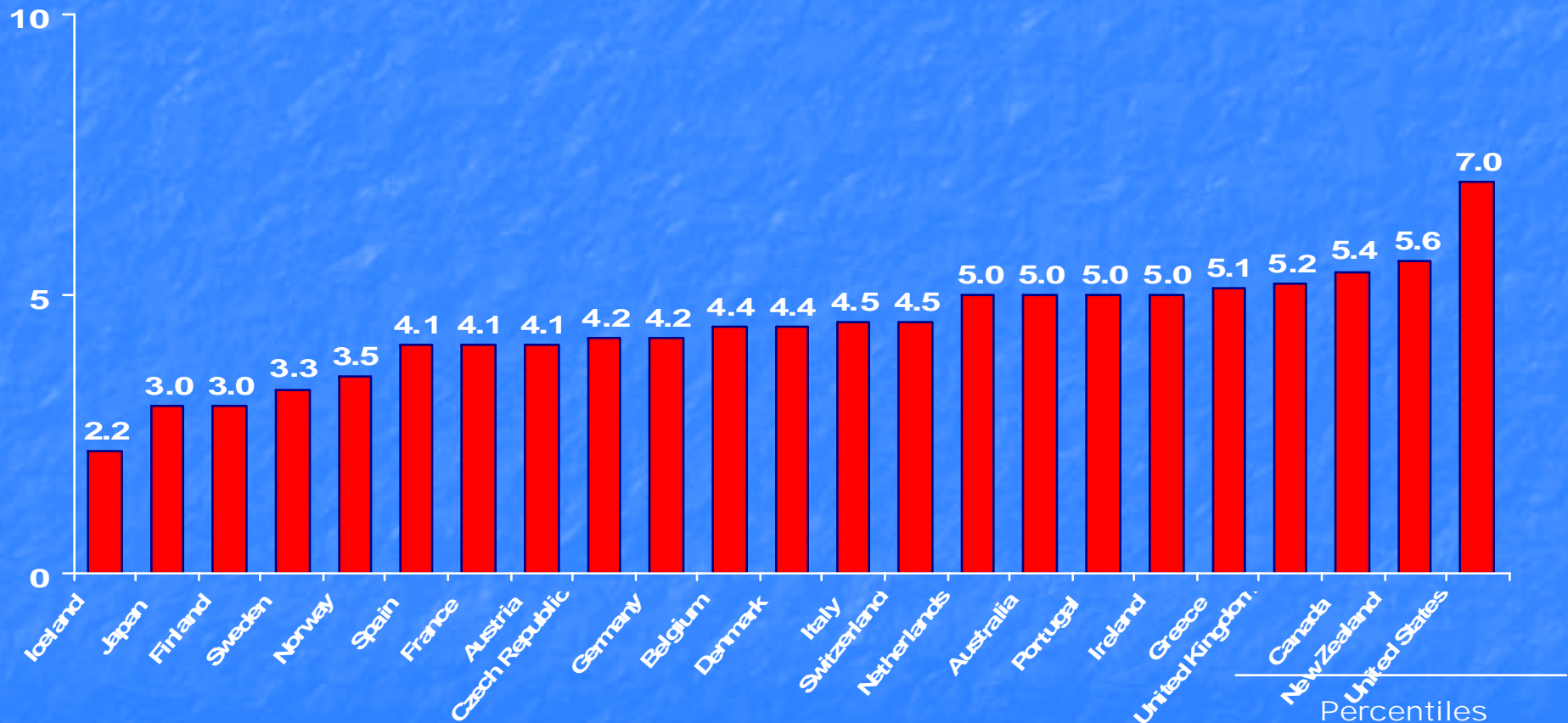
Authorizing Legislation –

Title III, Section 330H of the Public Health Service Act (42 U.S.C. 254c-8)

Infant Mortality Rate, 2002

Infant deaths per 1,000 live births

International variation



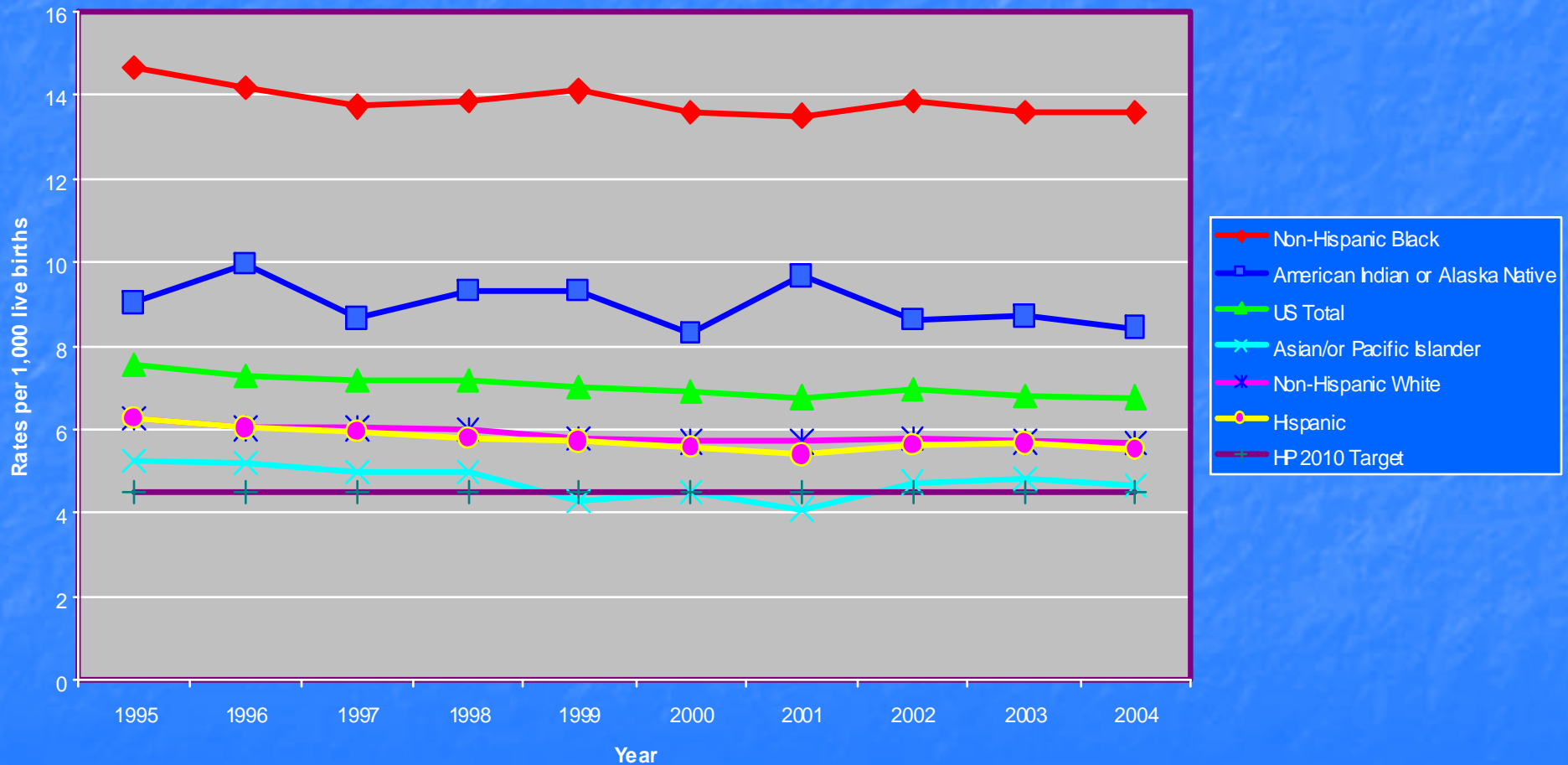
* 2001.

Data: International estimates—OECD Health Data 2005;

State estimates—National Vital Statistics System, Linked Birth and Infant Death Data (AHRQ 2005a).

Source: Commonwealth Fund National Scorecard on U.S. Health System Performance, 2006

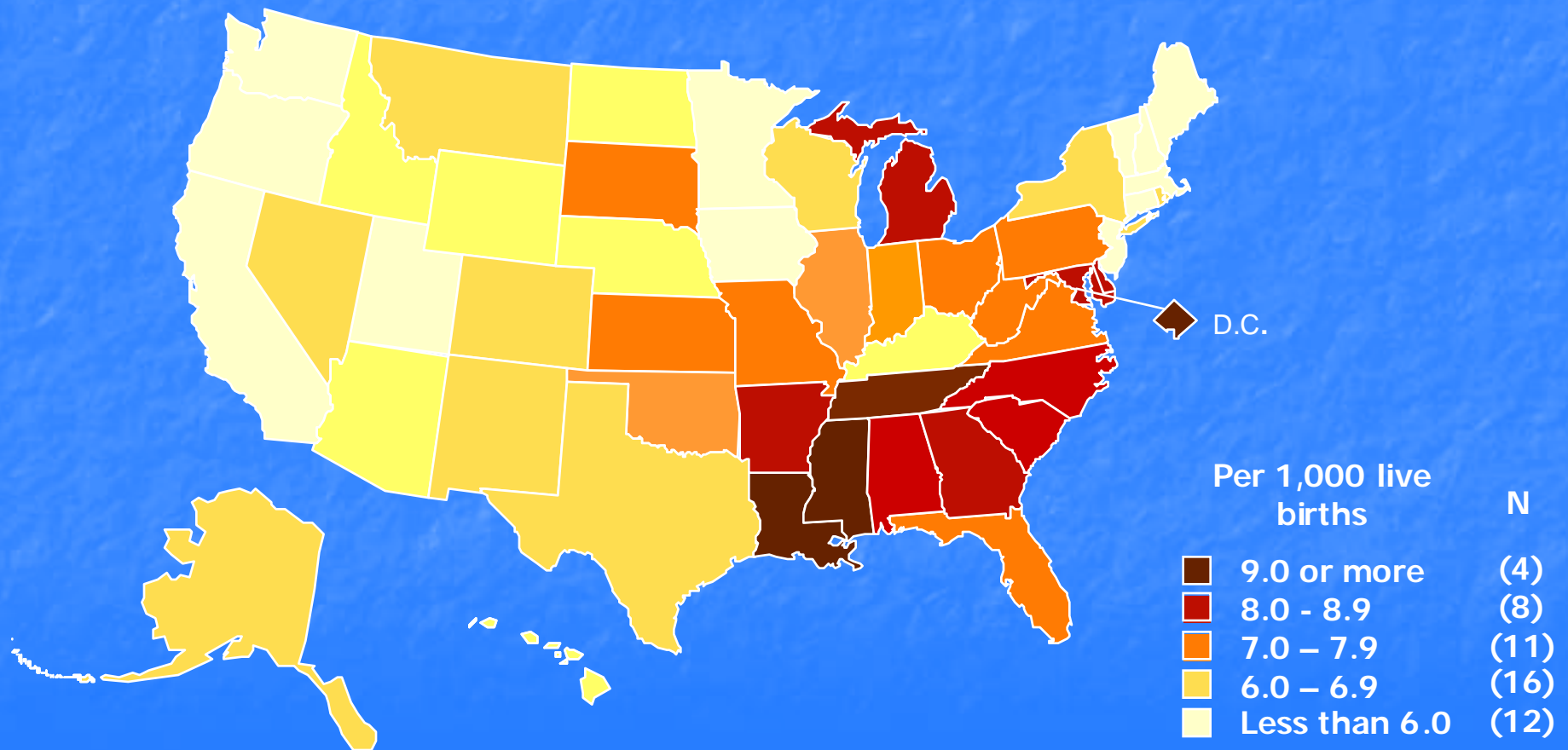
Infant Death Rates (Within 1 Year) by Race and Ethnicity: 1995 - 2004



Source: NVSS, NCHS, CDC.

All Infant Mortality Rate (Deaths: Within 1 Year) by State: 2002-2004

2010 Target = 4.5



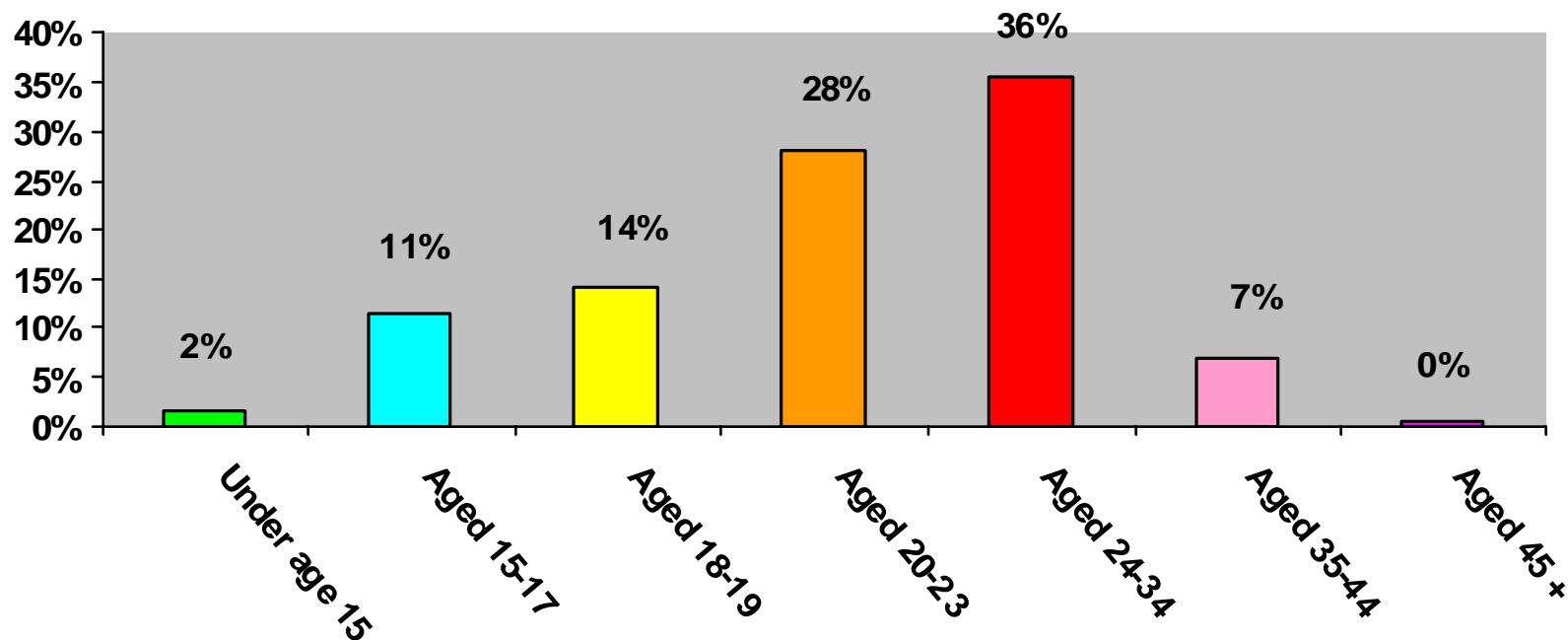
Source: NVSS, NCHS, CDC.

Obj. 16-1c



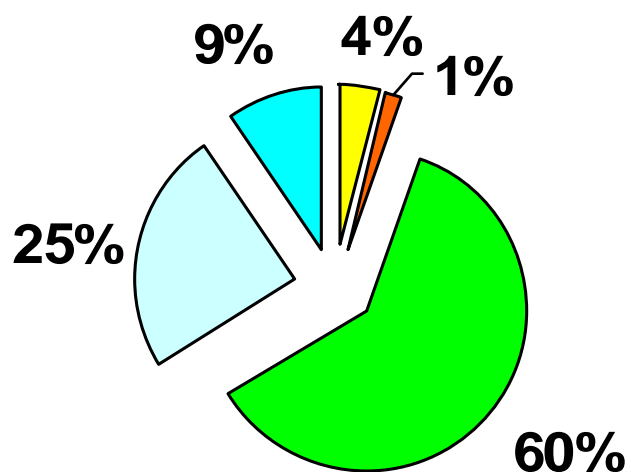
Who are the women served by Healthy Start?

WOMENS SERVED BY HEALTHY START DELIVERY THRU TWO YEARS AFTER DELIVERY BY AGE 2006



HEALTHY START, MCHB DGIS, 2006

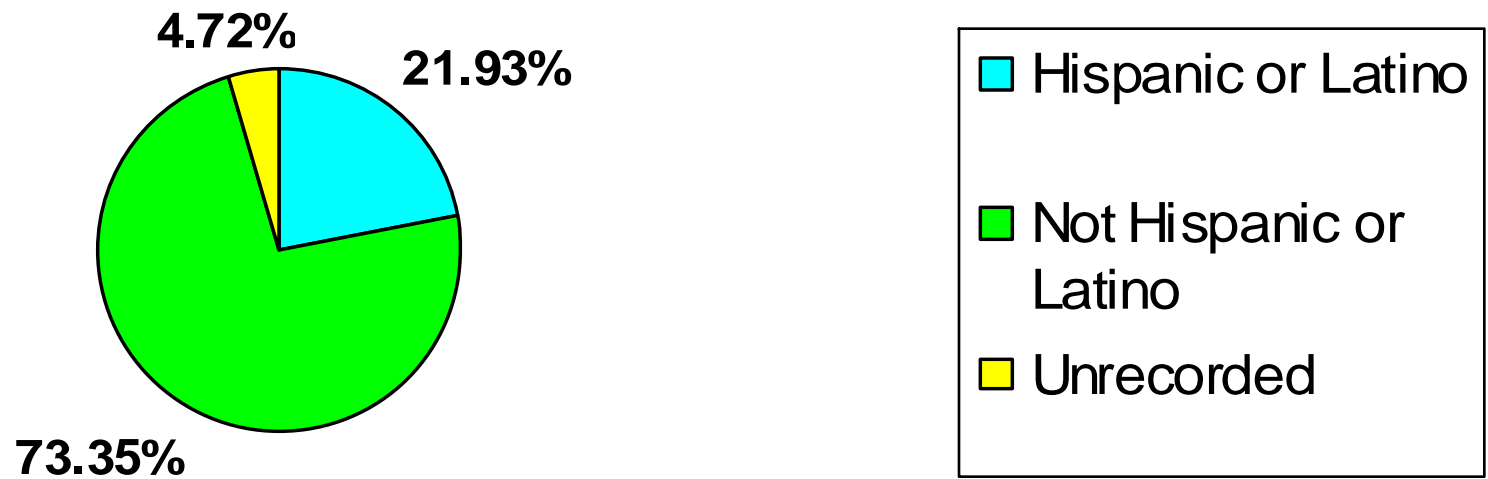
**WOMEN SERVED BY HEALTHY START
DELIVERY THRU TWO YEARS AFTER DELIVERY
BY RACE 2006**



-  American Indian or Alaska Native
-  Asian
-  Black or African American
-  White
-  Unknown/Multiracial

HEALTHY START, MCHB DGIS, 2006

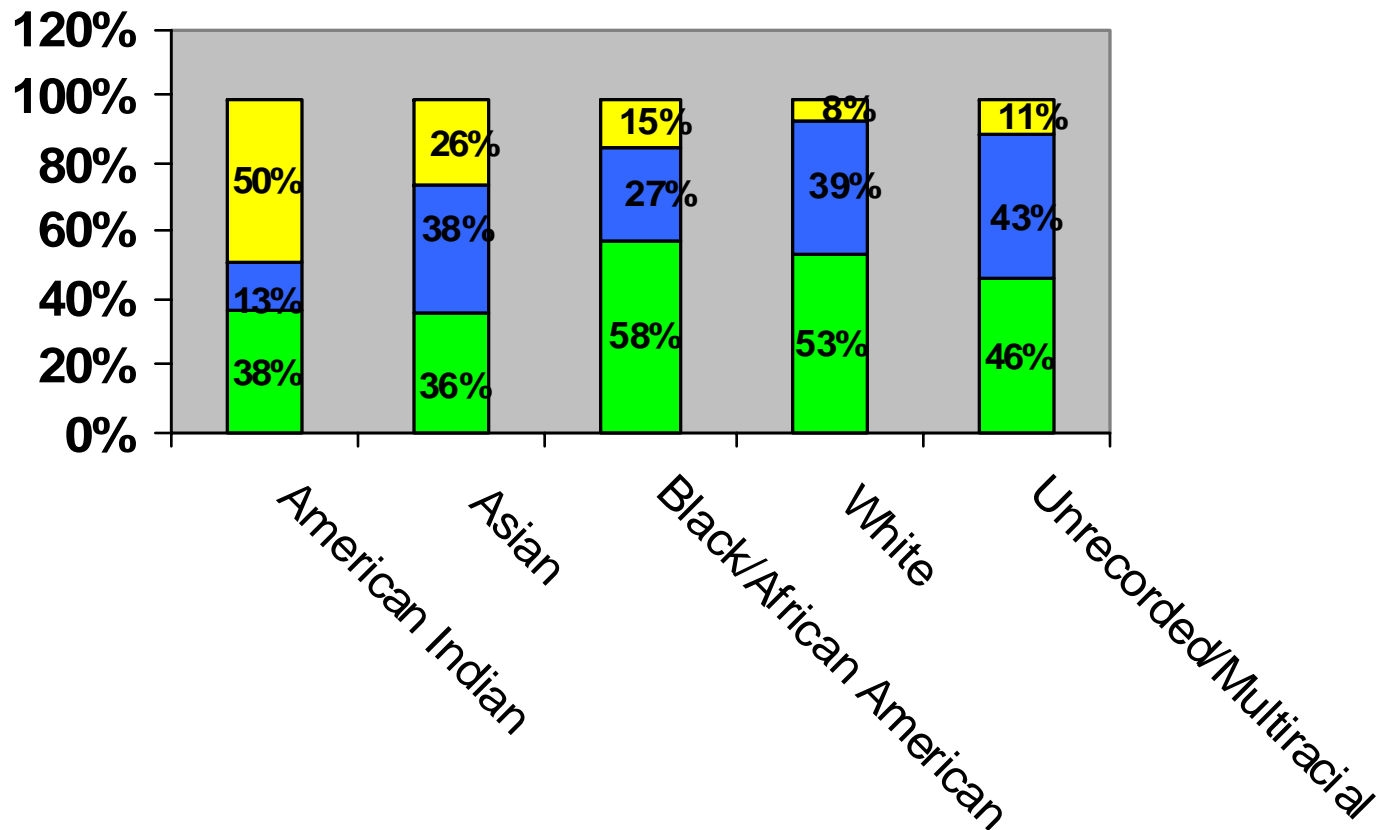
**WOMEN SERVED BY HEALTHY START
DELIVERY THRU TWO YEARS AFTER DELIVERY
BY ETHNICITY 2006**



HEALTHY START, MCHB DGIS, 2006

WOMEN SERVED BY HEALTHY START DELIVERY THRU TWO YEARS AFTER DELIVERY

■ Below 100 Percent of the FPL ■ Between 100-185 Percent of the FPL ■ Income Unknown



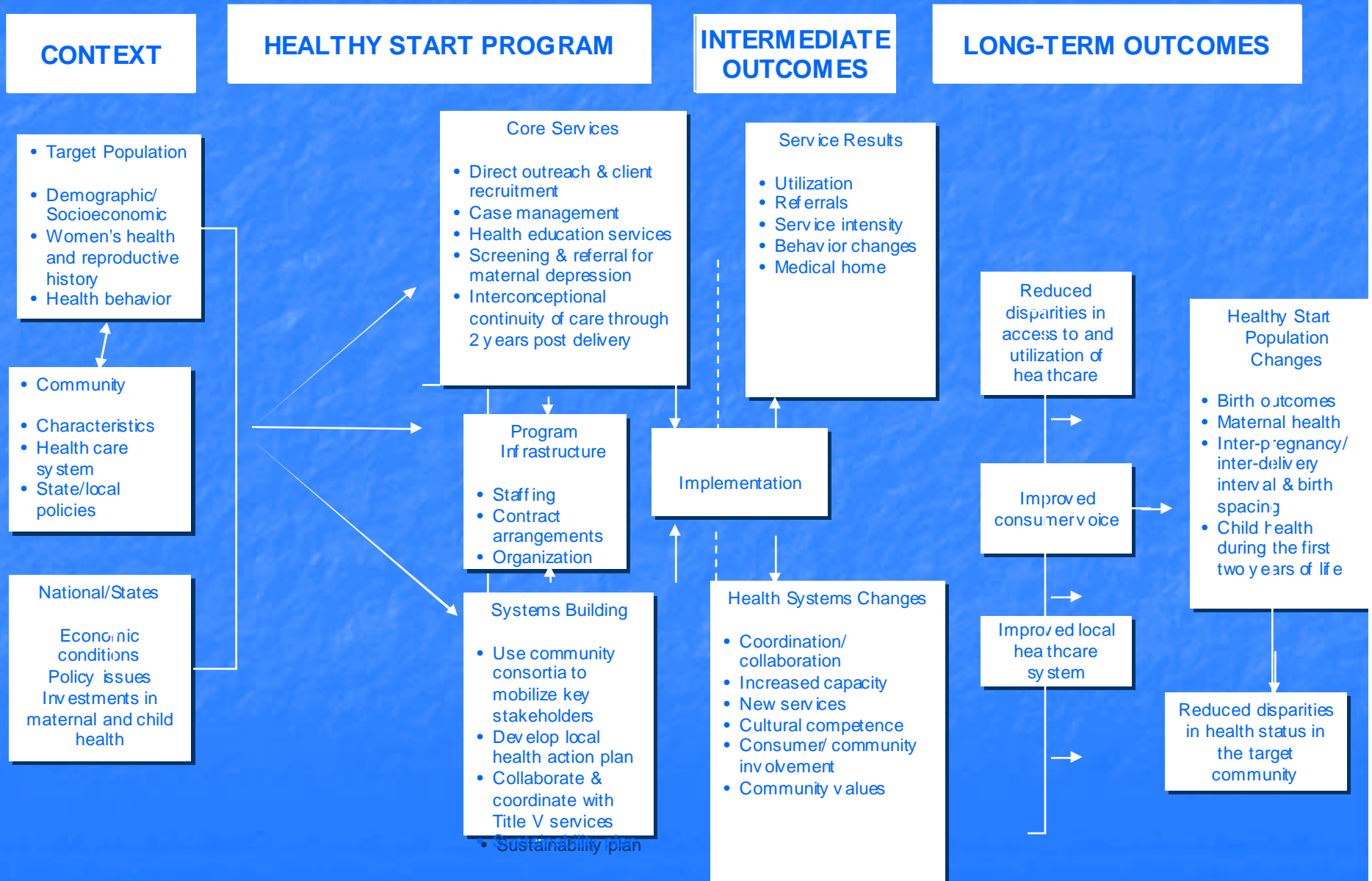
HEALTHY START, MCHB DGIS, 2006

HEALTHY START AND PERINATAL SERVICES

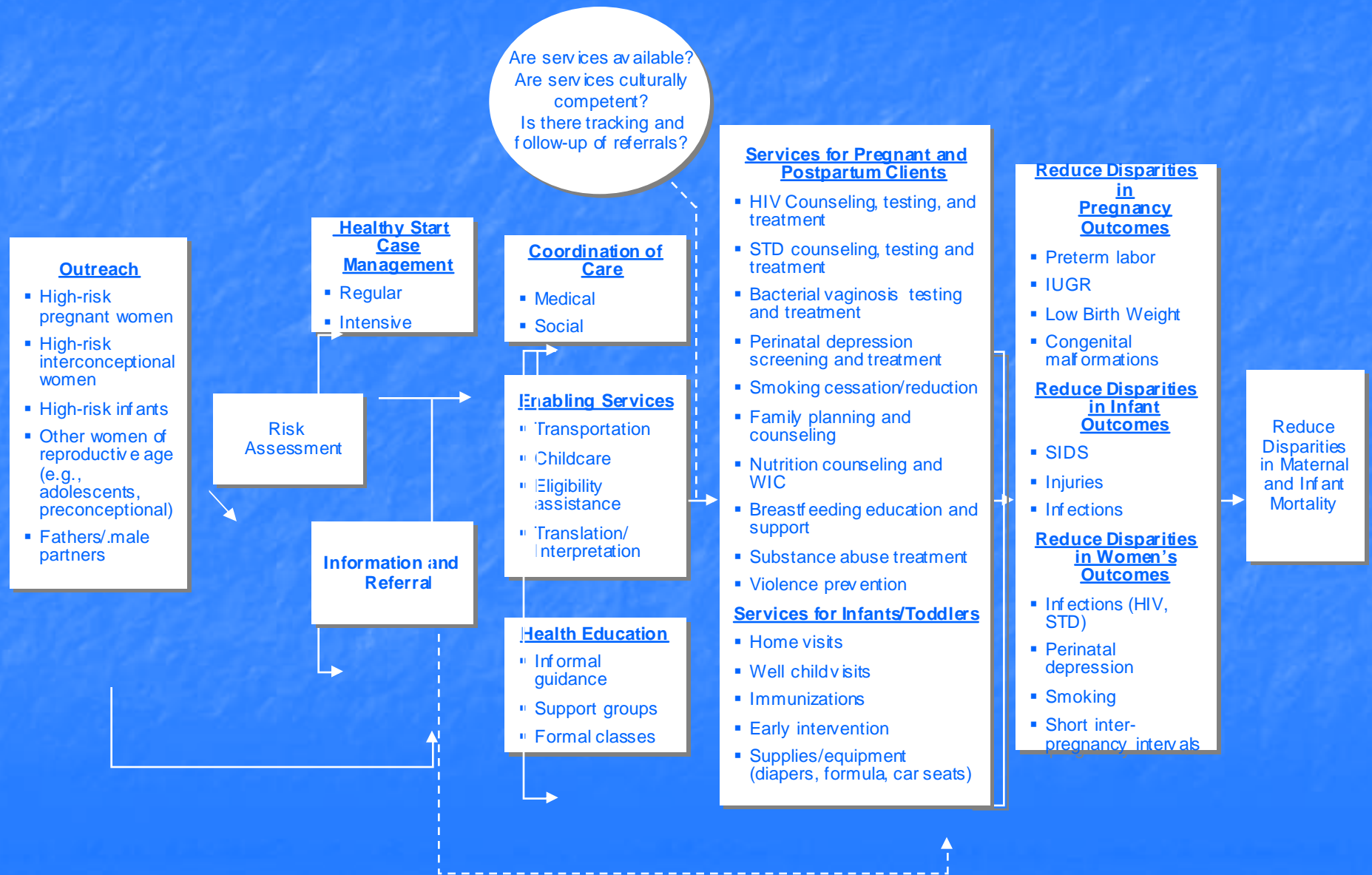
HEALTHY START

- **Core Services:** Outreach, case management, health education, screening for depression, and interconceptional continuity of care.
- **Core Systems Building:** Consumer and consortium involvement in policy formation and implementation, local health system action plan, collaboration with Title V, and sustainability.

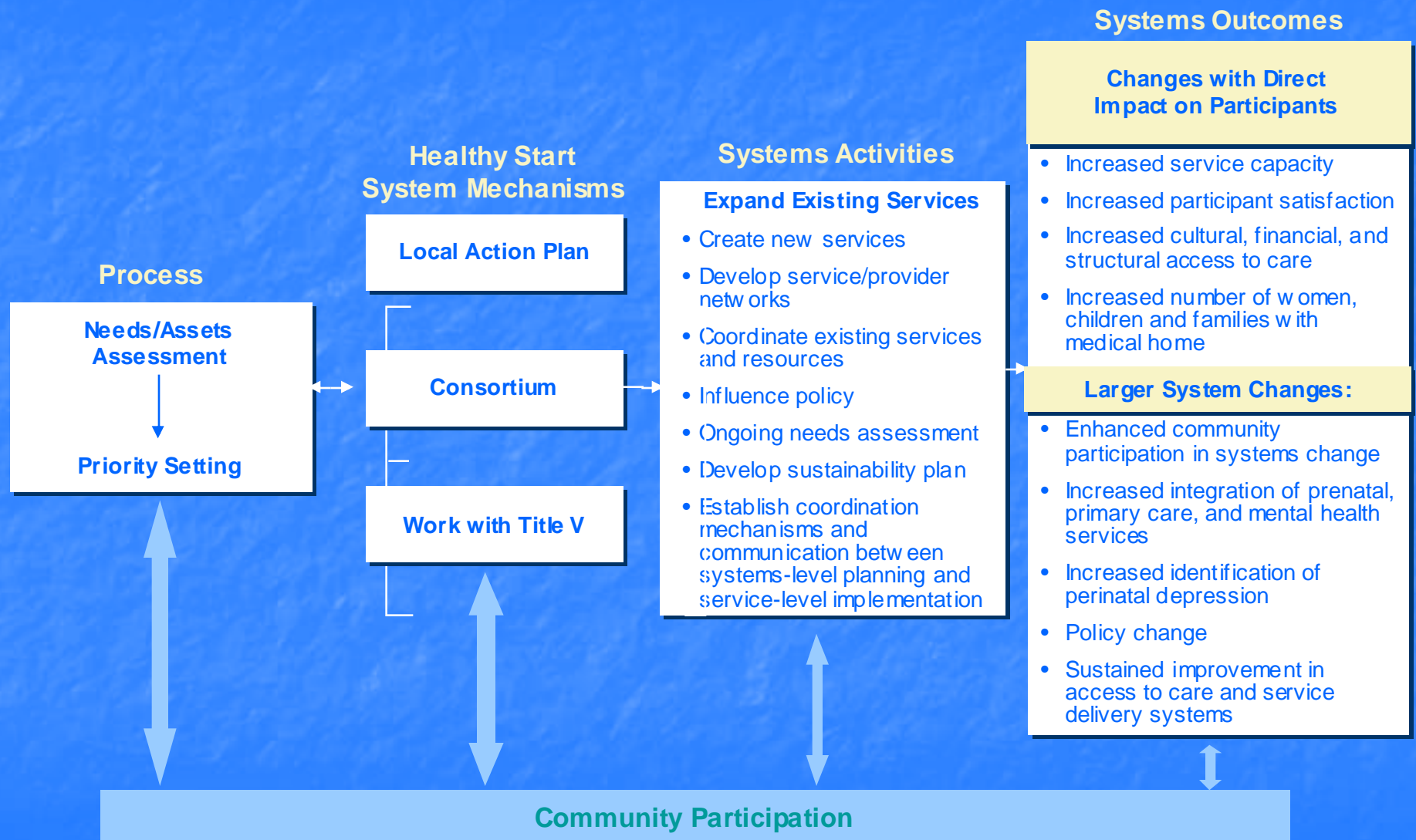
HEALTHY START LOGIC MODEL



HYPOTHESIZED LINK BETWEEN HEALTHY START SERVICES AND RESULTS

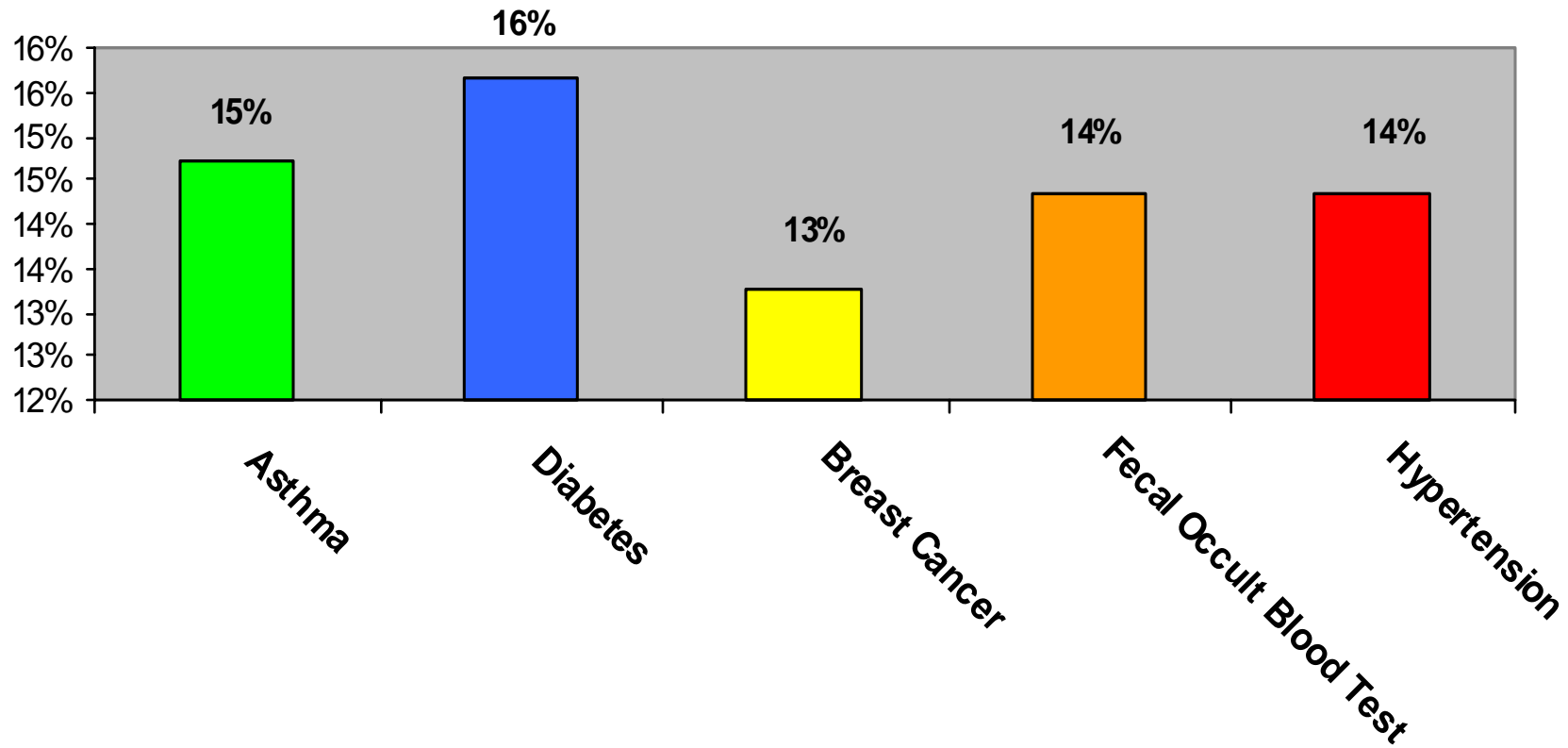


HYPOTHESIZED LINK BETWEEN HEALTHY START SYSTEMS ACTIVITIES AND RESULTS



WOMEN'S HEALTH NEEDS

DELIVERY THRU TWO YEARS AFTER DELIVERY

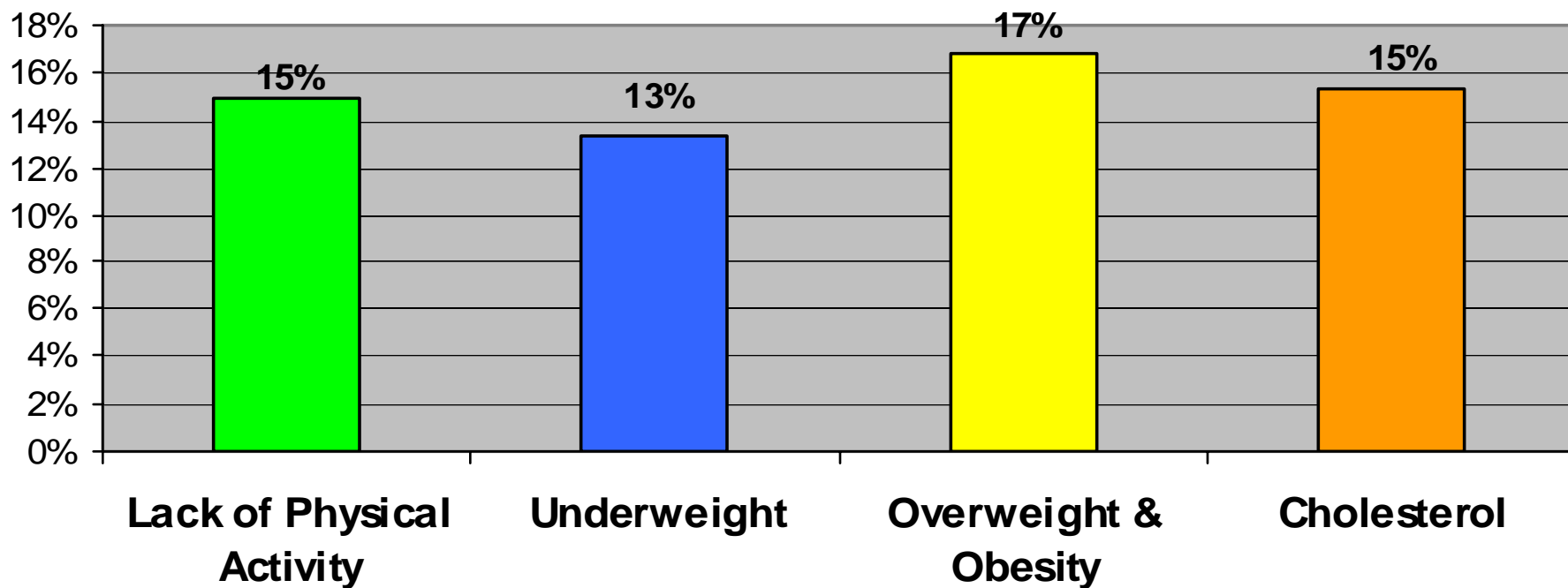


*Percentage Needing Intervention,

•HEALTHY START, MCHB DGIS, 2006

WOMEN'S HEALTH NEEDS*

DELIVERY THRU TWO YEARS AFTER DELIVERY

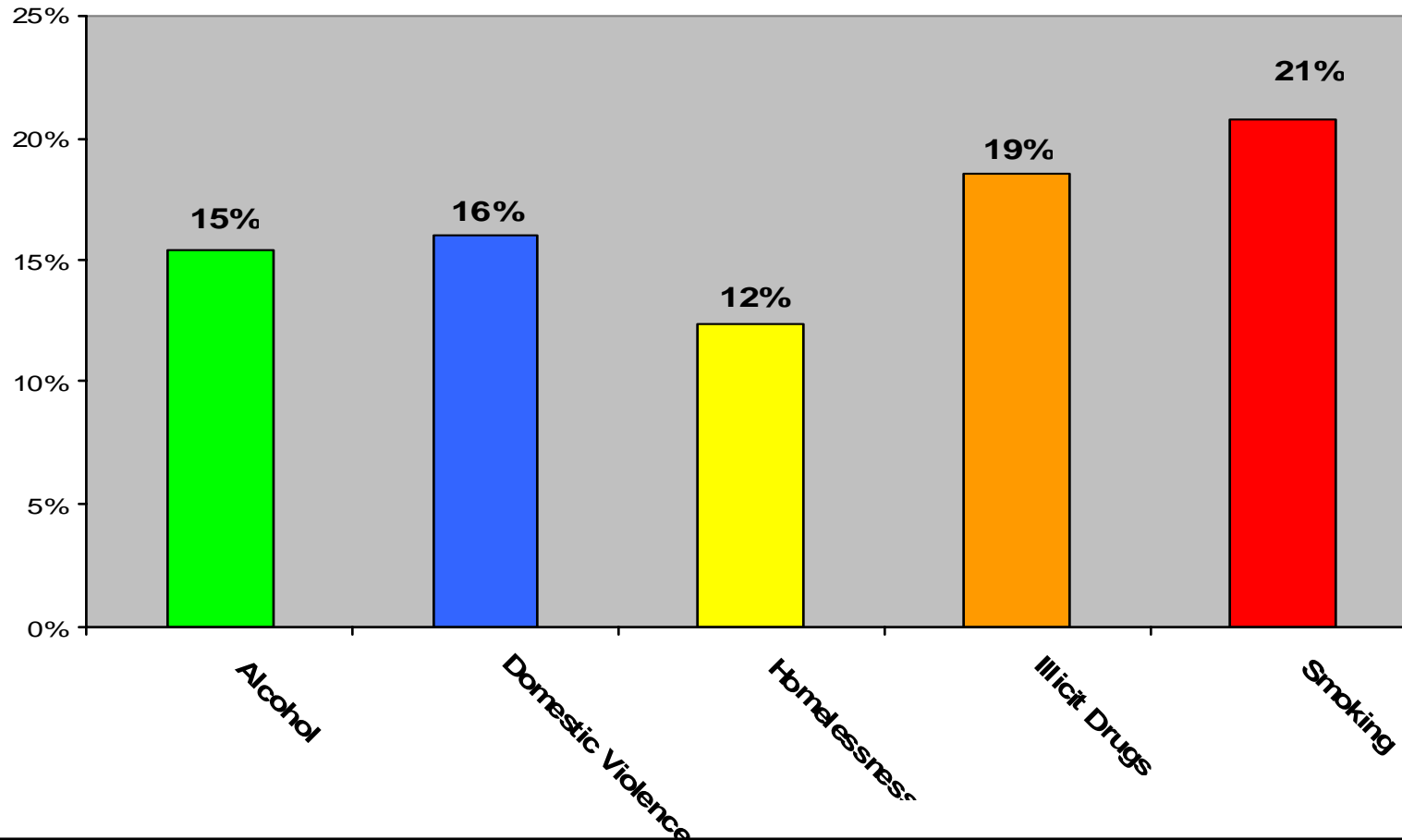


*Percentage Needing Intervention,

•HEALTHY START, MCHB DGIS, 2006

WOMEN'S HEALTH NEEDS

DELIVERY THRU TWO YEARS AFTER DELIVERY

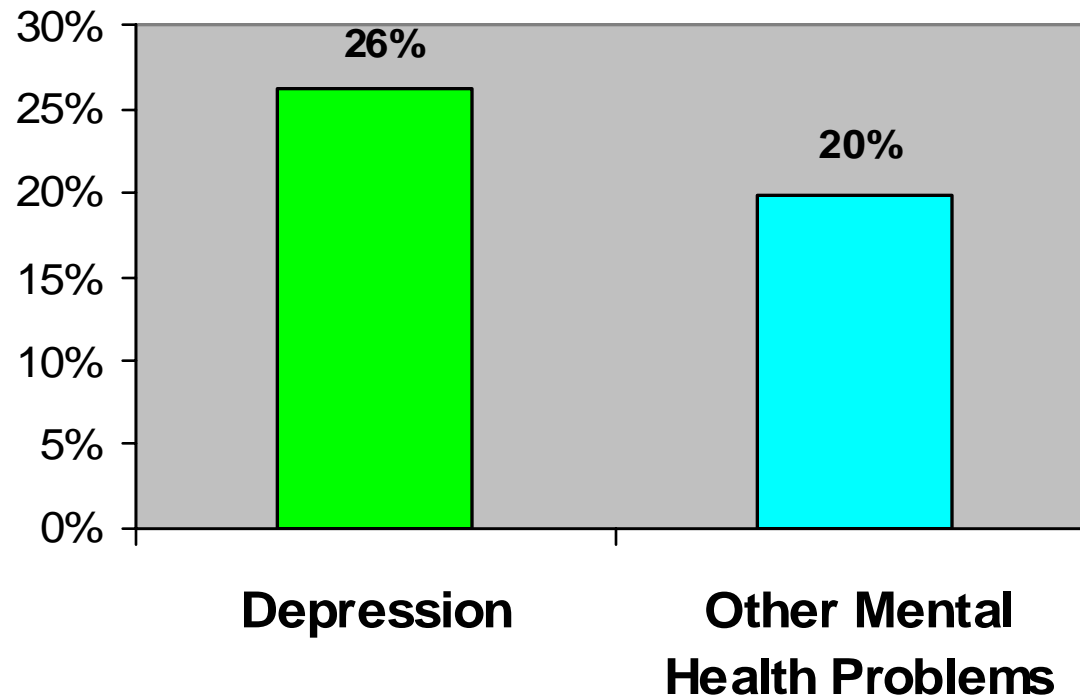


*Percentage Needing Intervention,

•HEALTHY START, MCHB DGIS, 2006

WOMEN'S HEALTH NEEDS*

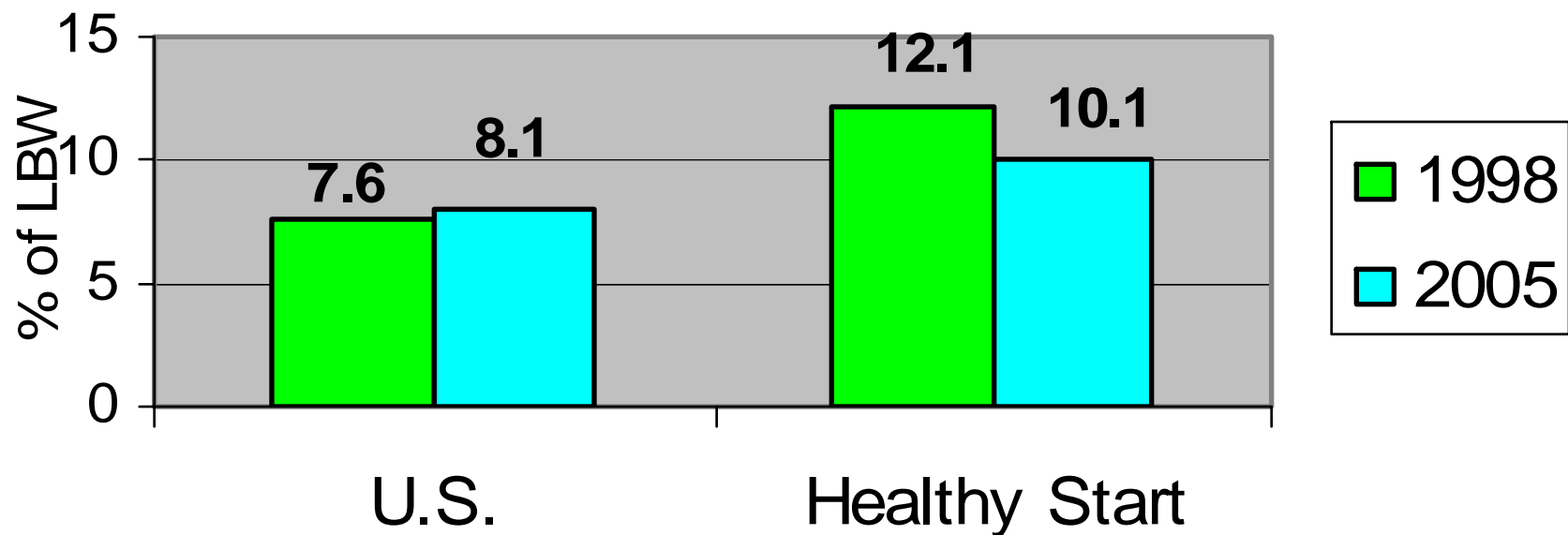
DELIVERY THRU TWO YEARS AFTER DELIVERY



*Percentage Needing Intervention,

•HEALTHY START, MCHB DGIS, 2006

LOW BIRTHWEIGHT: UNITED STATES AND HEALTHY START



*

•HEALTHY START, MCHB DGIS, 2006

HEALTHY START

Healthy Women



Healthy Families



Healthy Communities



Healthy Nation



CONTACT

Maribeth Badura

Director,
Division of Healthy Start and Perinatal Services
Maternal and Child Health Bureau
Health Resources and Service Administration
Department of Health and Human Services

5600 Fishers Lane
Room 18-12, Parklawn Building
Rockville, MD 20852

maribeth.badura@hrsa.hhs.gov