



# **Baccalaureate Education: Foundation for Public Health Nursing Practice—A Call to Action**

**November, 2007**

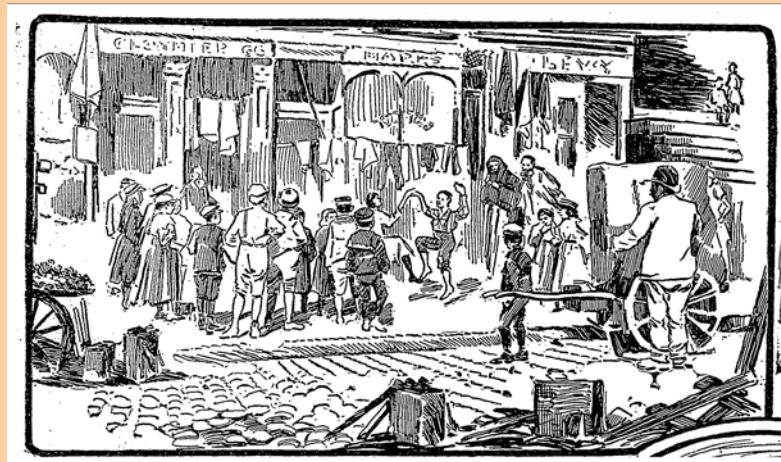
**Jeanne Matthews, PhD, RN  
Chair-Elect APHA  
Public Health Nursing Section**



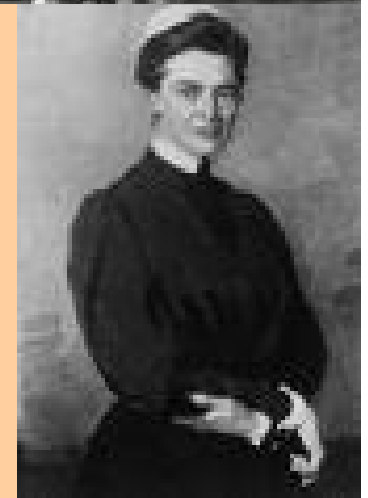
**Discuss the healthcare context and major issues surrounding baccalaureate education as the foundation for public health nursing practice.**



# From the wisdom of the pioneers...



April 23, 1905  
The New York Times





**...to the wisdom of our  
contemporaries who  
looked forward**

**In 1964, the ANA House of Delegates  
voted that the Association “continue to  
work toward baccalaureate education  
as the educational foundation for  
professional nursing practice.”**



# Examining how nurses were educated

- **Responsibility to:**
  - **Define the scope of practice**
  - **Assure competent nurses**
  - **Examine the type/quality of education**
- **Respond to:**
  - **Increase in knowledge about health**
  - **Increasing educational level in the US**
  - **Public demand for more health care**

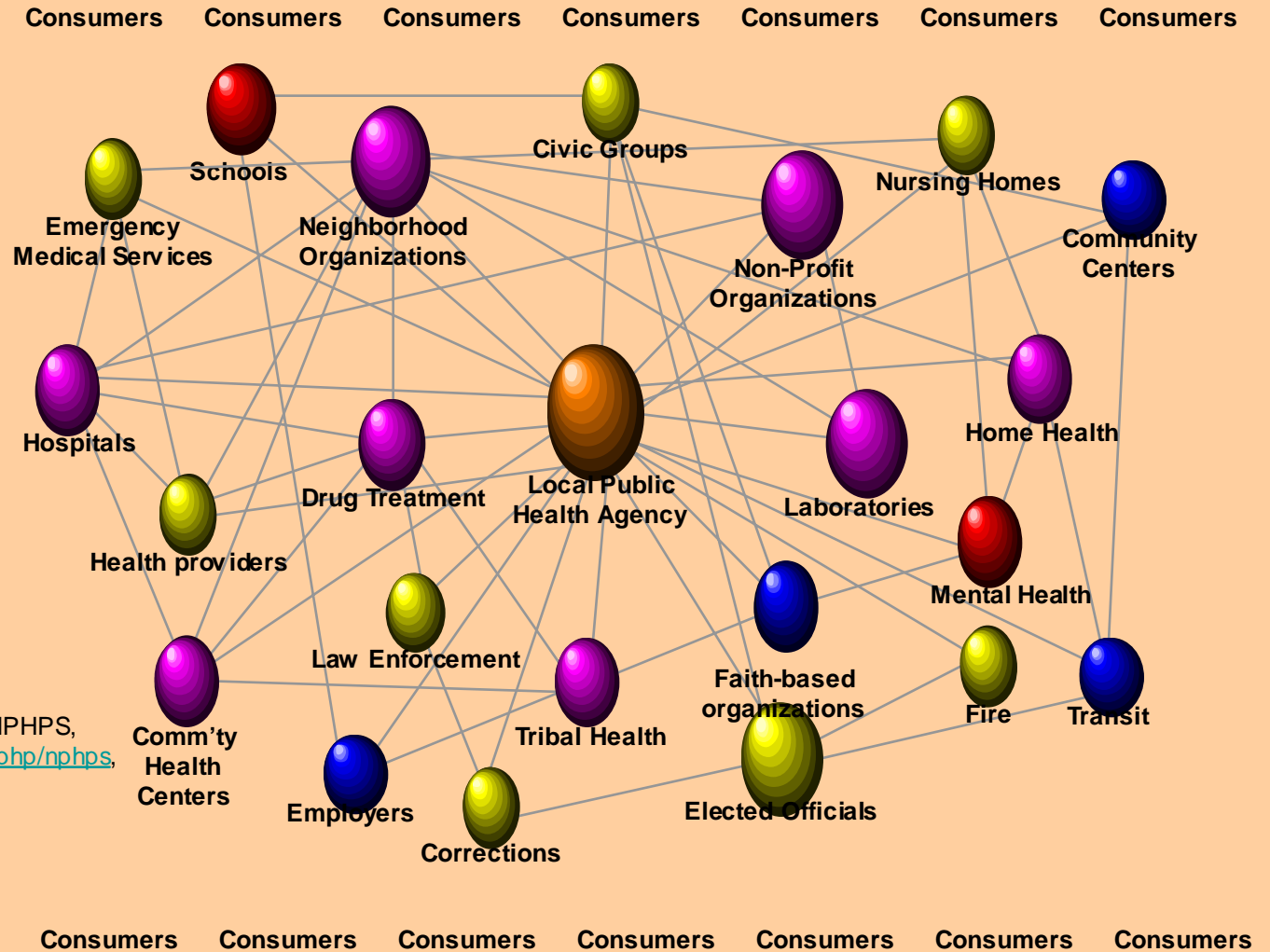


# The health care context

- **A costly, fragmented system of illness care**
- **Shift from hospital-centered to community-centered care**
- **Moving emphasis to including prevention in the equation**
- **Recognition of our limited movement to better health outcomes**



# The Public Health System



Arlington County Adaptation of the CDC, NPHPS, Public Health System, [www.cdc.gov/od/ocphp/nphps](http://www.cdc.gov/od/ocphp/nphps), Overview, slide 13



# **Public health nursing...still a practice discipline**

**“Public health nursing is the practice of promoting and protecting the health of populations using knowledge from nursing, social, and public health sciences.”**

**The definition and role of public health nursing: a statement of the APHA public health nursing section, March 1996 update, Washington, DC, 1996, APHA.**



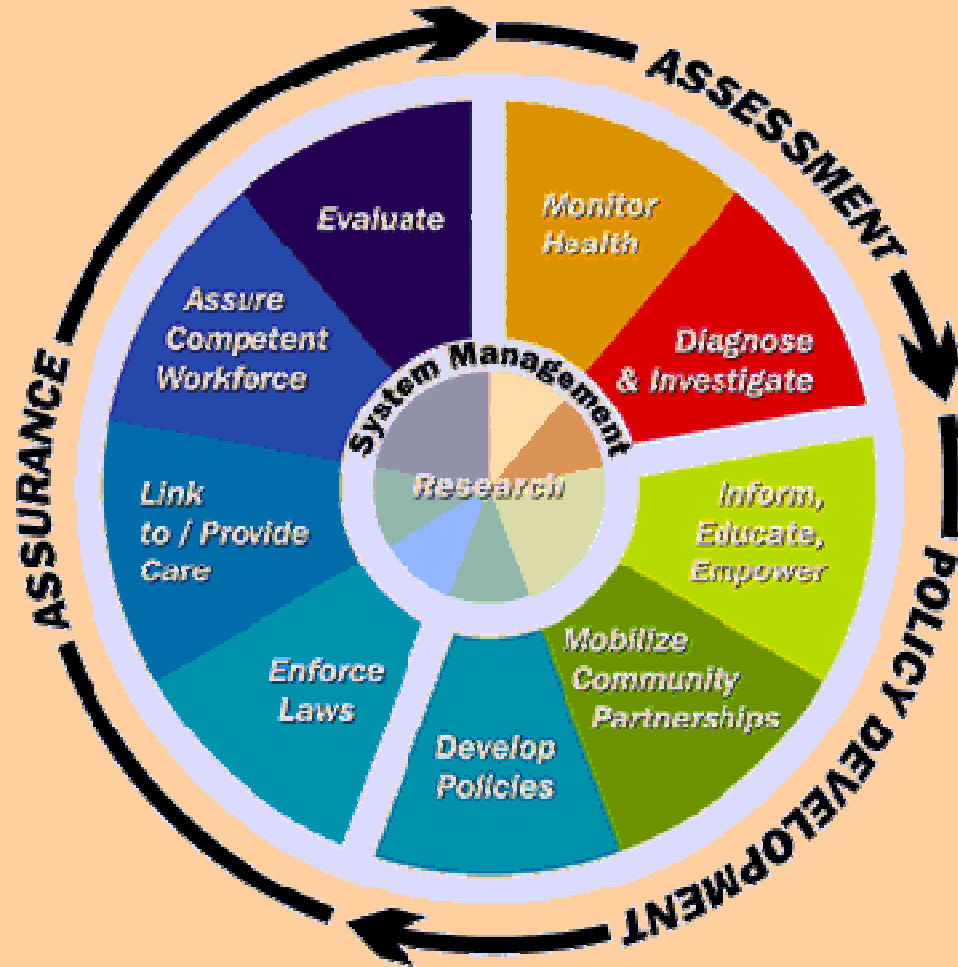
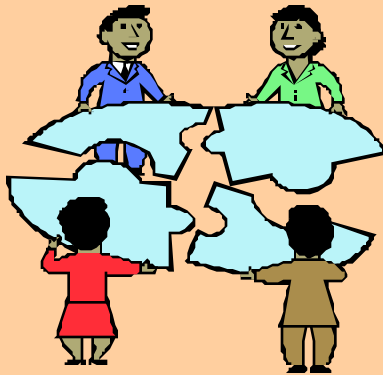


**What are the knowledge, skills and abilities (KSAs) needed to be a competent PHN?**

**Where will the nurse gain the KSAs?**



# Essential public health services



From "Public Health in America" Adopted: Fall 1994, Source:  
Public Health Functions Steering Committee (July 1995)  
<http://www.health.gov/phfunctions/public.htm>, accessed 10/21/07



## **Essential Services (Assessment Function)**

- **Monitor health status to identify community health problems**
- **Diagnose and investigate health problems and health hazards in the community**



# The PHN in Communicable Disease (and needed KSAs)

- **The PHN:**
  - **With partners, monitors rates of communicable disease over time (epidemiology, biostatistics)**
  - **Identifies strategies to prevent/control disease (communicable disease epidemiology, social and behavioral sciences, communication)**
  - **Collaborates with community partners to plan, implement and evaluate community disease prevention/control programs (program planning, communication, epidemiology, environmental health)**
  - **Works with individuals as needed for treatment, partner notification and case management to reduce incidence of disease (clinical skills, management, social and behavioral sciences, epidemiology)**



## **Essential Services (Policy Development Function)**

- **Inform, educate and empower people about health issues**
- **Mobilize community partnerships to identify and solve health problems**
- **Develop policies and plans that support individual and community health efforts**



# The PHN in School Health (and needed KSAs)

- **The PHN:**
  - **Creates and maintains community partnerships to design health promotion and disease prevention programs for the school community (growth and development, social and behavioral sciences, communication, cultural competency, environmental health)**
  - **Collaborates with the school community to develop program policies consistent with national and local best practices (communication, conflict management, program management)**
  - **Partners to monitor and enforce state and local regulation to prevent the spread of vaccine preventable disease (communication, program management, epidemiology, cultural competency, political science)**



## **Essential Services (Assurance Function)**

- **Link people to needed health services and assure the provision of health care when otherwise unavailable**
- **Assure a competent public health and personal health care workforce**
- **Evaluate effectiveness, accessibility & quality of personal and population-based health services**



# The PHN in Family Health Services (and needed KSAs)

- The PHN:
  - Collaborates with community to create a system to evaluate access to health for families in the community (assessment, behavioral and social sciences, cultural competency)
  - Partners with the community to advocate for Maternity services sufficient to meet population needs (communication, community assessment, social and behavioral science)
  - Using national benchmarks, collaborates with peers to identify needed training for PHN and other staff (assessment, research, quality management, information management, communication, cultural competency)





# The cross-cutting Essential Service: Research (and needed KSAs)

- **Research for new insights and innovative solutions to health problems**
- **Knowledge, skills and abilities:**
  - Collaborates with university and community partners to identify questions for study (public health and nursing theory, research, social science, communication)
  - Synthesizes available evidence to apply best practices to PHN (research, epidemiology, biostatistics, public health and nursing theory)



# So, why Baccalaureate education as the foundation?

- Recognition that population-focused practice demands additional KSA
- Commitment to the public:
  - Improving health status of all and the HP 2010 mandate to eliminate health disparities
  - Community emergency preparedness and response
  - Research: Aiken et al. (2003) published in JAMA "Educational Levels of Hospital Nurses and Surgical Patient Mortality"
- Professional recognition
- Attainment of advanced degrees



## Why now?

- **New scope and standards of practice**
- **PHN Competencies**
- **Accreditation is coming to Public Health**



**What next?**



# Thank you!

## Contact Information:

**Jeanne Matthews, PhD, RN**  
**Public Health Program Specialist (Nurse Manager)**  
**Arlington Department of Human Services**  
**Public Health Division**  
**Faculty, Georgetown University**  
**Nursing & Health Studies**  
**800 S. Walter Reed Drive**  
**Arlington, VA 22204**  
**PH: 703-228-5584**  
**FX: 703-228-5233**  
**EM: [jmatthews@arlingtonva.us](mailto:jmatthews@arlingtonva.us)**

