

# **JEWISH VOICE FOR PEACE HEALTH AND HUMAN RIGHTS PROJECT**

***Report from fifth delegation to Israel/Palestine  
20 October – 3 November 2007***

Alan Meyers, MD,MPH  
Associate Professor of Pediatrics  
Boston University School of Medicine  
Jewish Voice for Peace - Boston

# JEWISH VOICE FOR PEACE

[www.jvp.org](http://www.jvp.org)

[www.jewishvoiceforpeace.org](http://www.jewishvoiceforpeace.org)

Jewish Voice for Peace is a national membership organization that supports the aspirations of Israelis and Palestinians for security and self-determination.

JVP seeks:

- An end to the Israeli occupation of the West Bank, the Gaza Strip, and East Jerusalem
- A resolution of the Palestinian refugee problem consistent with international law and equity
- An end to all violence against civilians
- A change in U.S. foreign policy

# JVP's Health and Human Rights Project

- brings health professionals and others interested in human rights to Israel/Palestine to work with their counterparts in the health sector and the peace movement
- documents conditions on the ground and disseminates this information to inform the public debate and contribute to policy change in the U.S.
- partners primarily with:
  - Physicians for Human Rights-Israel ([www.phr.org.il](http://www.phr.org.il))
  - Palestinian Medical Relief Society ([www.upmrc.org](http://www.upmrc.org))

## October 2007 delegation

- travel restrictions, access problems
- territorial expansion in the oPT
- violence against civilians

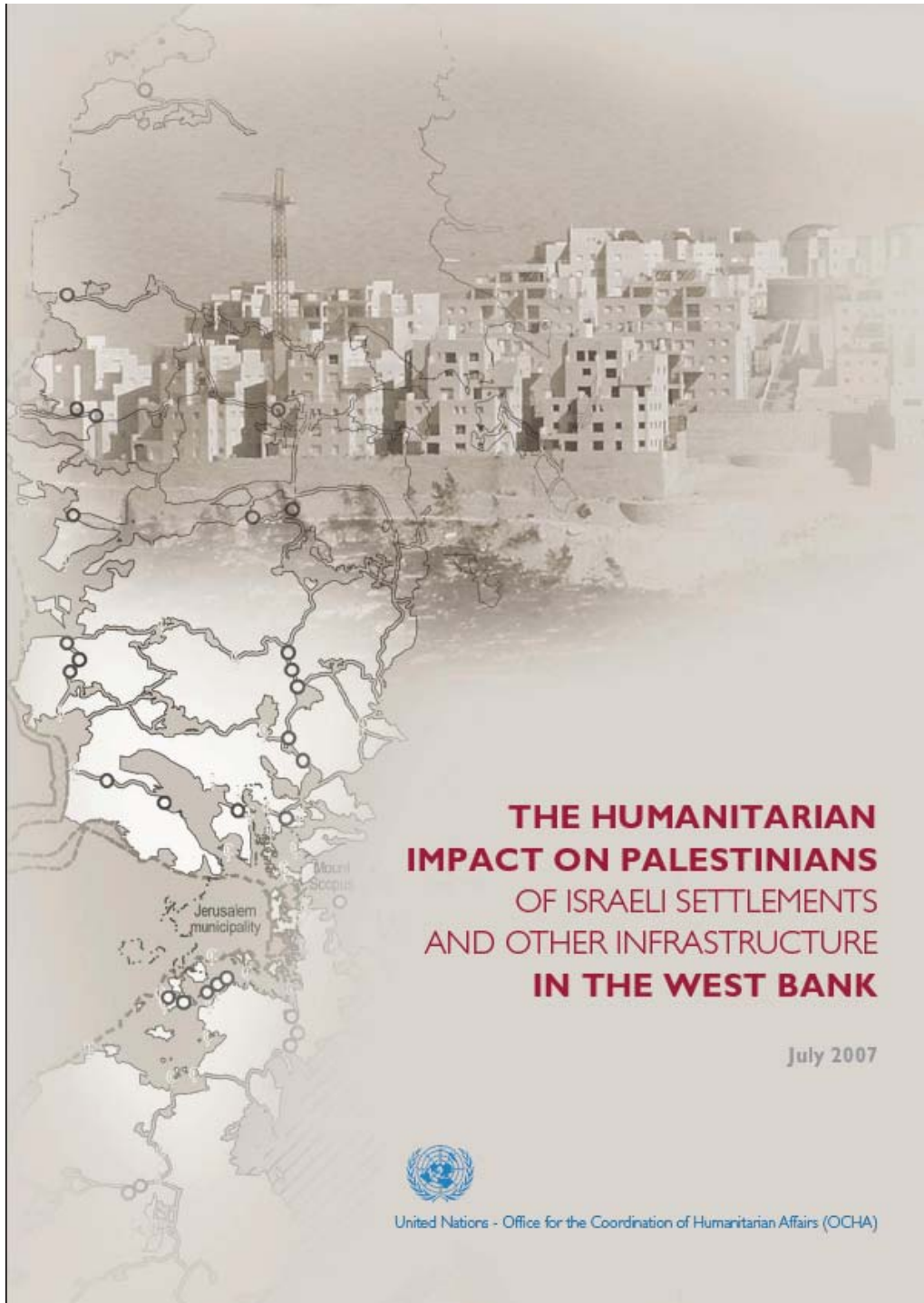


**THE HUMANITARIAN  
IMPACT ON PALESTINIANS  
OF ISRAELI SETTLEMENTS  
AND OTHER INFRASTRUCTURE  
IN THE WEST BANK**

July 2007



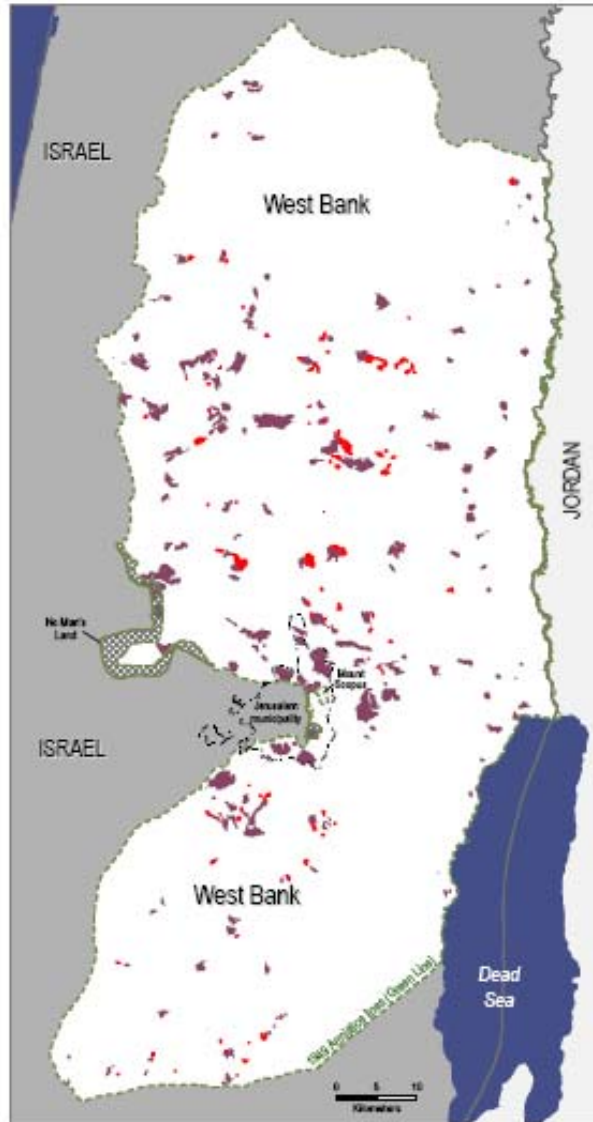
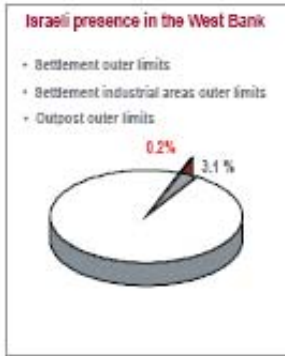
United Nations - Office for the Coordination of Humanitarian Affairs (OCHA)



“The analysis shows that almost 40% of the West Bank is now taken up by Israeli infrastructure... roads linking settlements to Israel, in conjunction with an extensive system of checkpoints and roadblocks, have fragmented Palestinian communities from each other.”

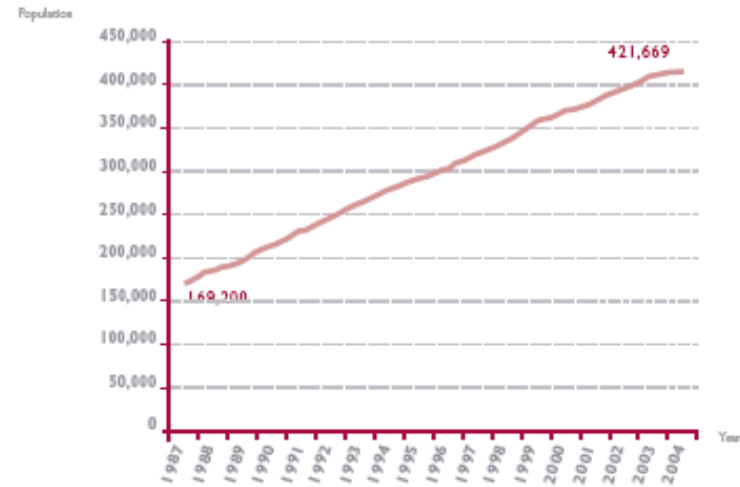


Outpost outer limits in 2005



Source: see Annex 2 and 3.

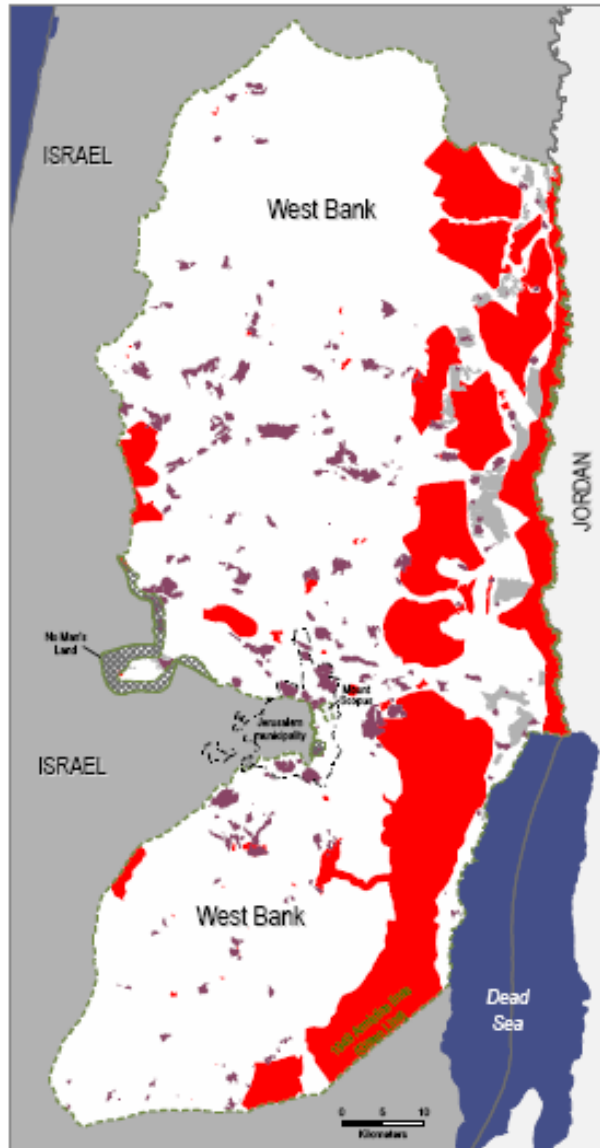
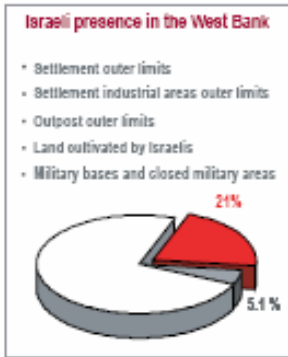
Expansion of Israeli settler population in the West Bank, including East Jerusalem



Source: OCHA, Israeli presence in the West Bank geo-database. For more details see Annex 2.

“Since the beginning of the Oslo Accords period in 1993, the total settler population has increased by 63%.”

Closed military areas

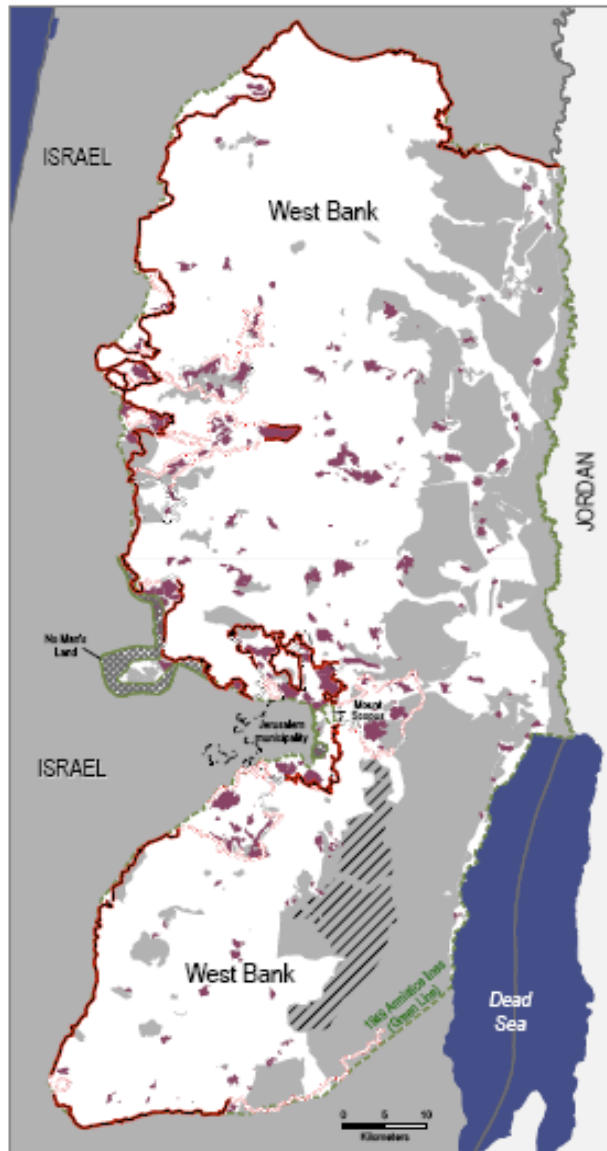
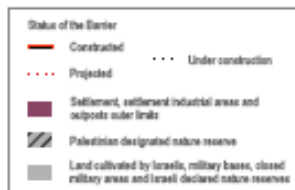
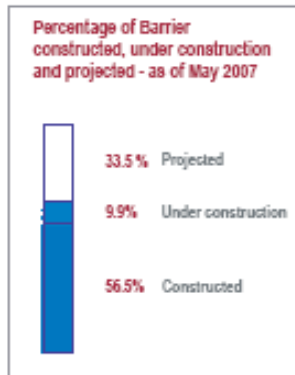


Source: see Annex 2 and 3.

“More than one-fifth of the West Bank is designated as closed military areas/fire zones..The military areas act as a physical division between the settler population and local Palestinian communities.”



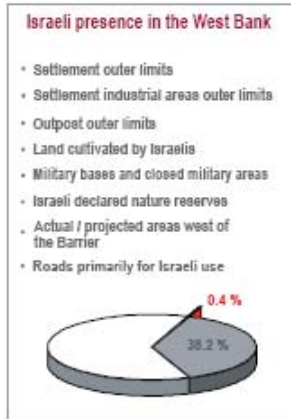
## The route of the Barrier



Source: see Annex 2 and 3.

“...nearly three-quarters of the total projected Barrier route (525 of the 721 km) runs inside the West Bank...and not along the Green Line. When complete, approximately 10.2 percent of West Bank territory...will be isolated by the Barrier and physically connected to Israel. The area affected includes some of the most agriculturally productive land and richest water resources in the West Bank.”

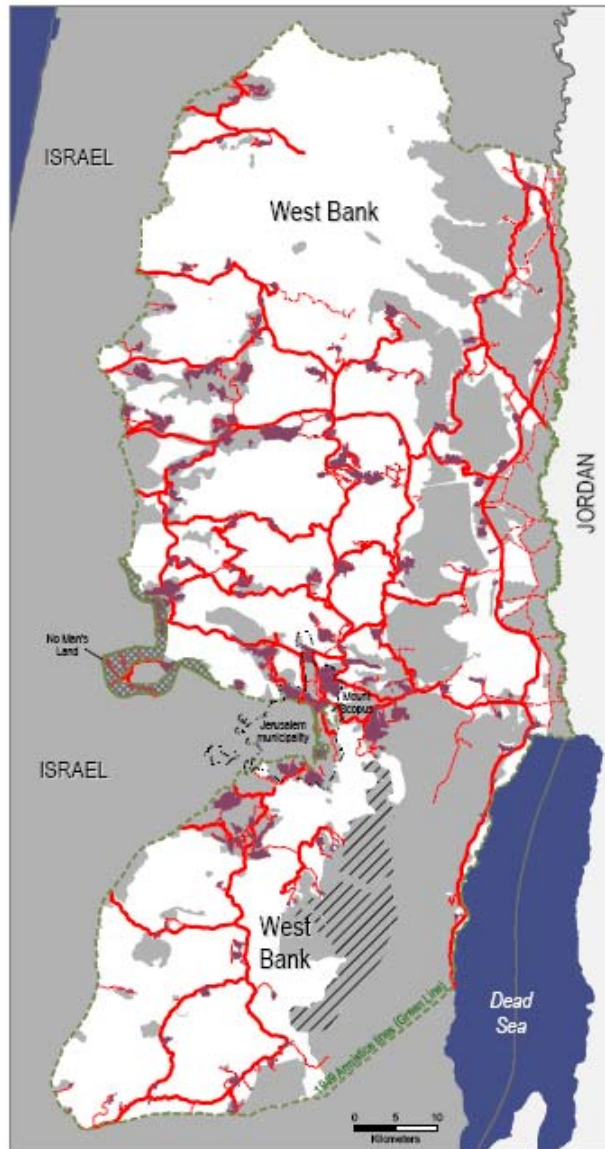
Roads primarily for Israeli use



Type of roads primarily for Israeli use

Type	Length in km
Main	401
Regional	466
Local	464
Outpost roads	200
Military road	130
<b>Total</b>	<b>1,661</b>

Source: OCHA (Israeli presence in the West Bank geo-database. For more details see Annex 2.



Source: see Annex 2 and 3.

“There are at least 20 major and regional roads primarily for Israeli use that specifically link West Bank settlements to each other and to Israel.”

# Physical components of the closure regime

A comprehensive system of 85 manned checkpoints and more than 460 physical obstacles regulates or prevents Palestinian vehicles from using those West Bank roads primarily reserved for Israeli use.

**- CHECKPOINT:**

A barrier manned by the IDF, Border Police and/or private security companies with observation towers and other physical blocks used to control pedestrian and vehicular access.



Al Ram checkpoint, Jerusalem governorate. Photo by J.C.Tordai, 2007.

**- PARTIAL CHECKPOINT:**

An established checkpoint structure operating periodically.



Ras Al Jora partial checkpoint on Road 35. Photo by J.C.Tordai, 2007.

**- ROADGATE:**

A metal gate used by the IDF to control movement along roads.



Roadgate blocking access onto Road 60 for Beitin villagers, Ramallah governorate. Photo by J.C.Tordai, 2007.

**- EARTHMOUND:**

A mound of rubble, dirt and/or rocks to obstruct vehicle access.



Earthmound in Hebron governorate. Photo by OCHA, 2006.

**- ROADBARRIER:**

A fence or other physical barrier of more than 100 metres in length, which runs alongside a road primarily reserved for Israelis. This obstructs the free passage of Palestinian people, vehicles and animals onto, off, or across the road.



Road barriers along Road 505, Salfit governorate. Photo by OCHA, 2007.

**- EARTH WALL:**

A series of earthmounds alongside a road used to prevent vehicles from crossing.



Earth wall along Road 317, Hebron governorate. Photo by OCHA, 2007.

**- ROADBLOCK:**

A series of one metre concrete blocks to obstruct vehicle access.



Roadblock obstructing vehicle access coming from Beit 'Einun village onto Road 60, Hebron governorate. Photo by J.C.Tordai, 2007.

**- TRENCH:**

A ditch dug across or alongside a road to prevent vehicles from crossing.








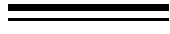


A trench in Tubas governorate. Photo by OCHA, 2006.



# Closures Update

Number of closures by type ( 11 July 2007)

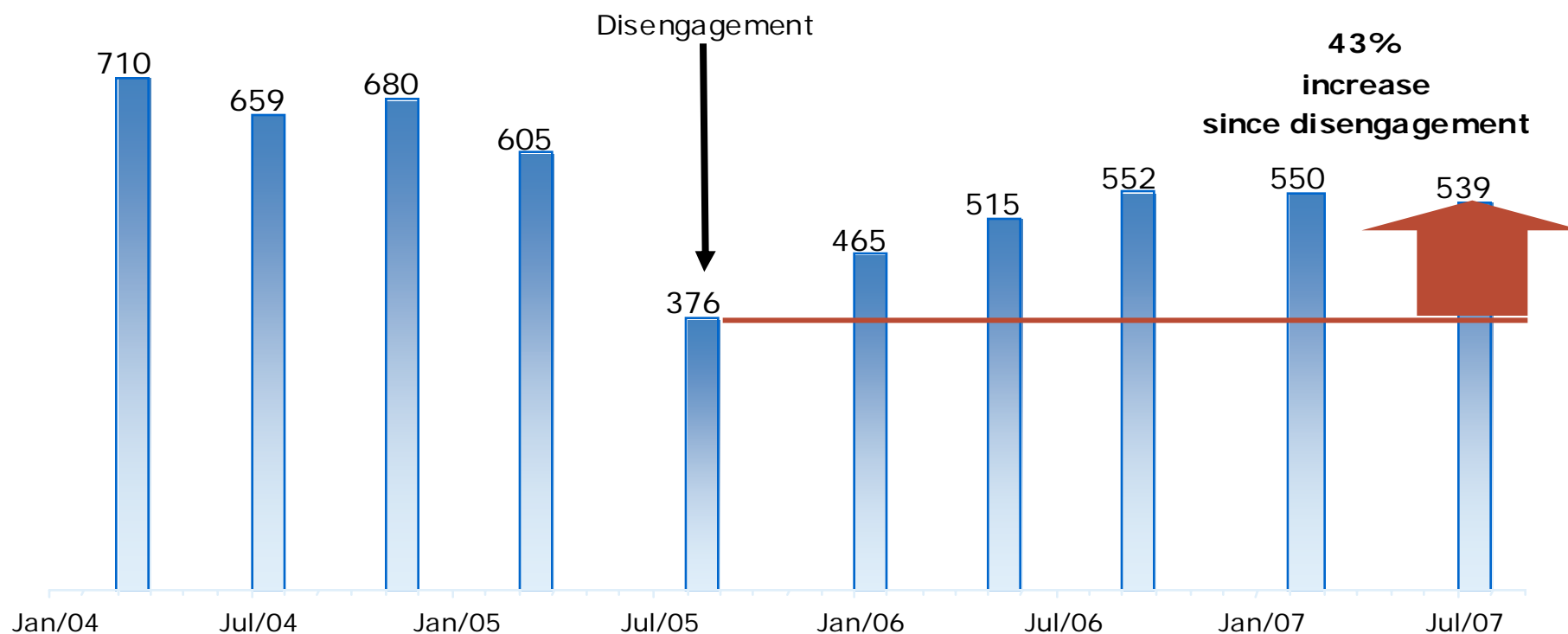
	74		<b>Checkpoints</b> A barrier manned by IDF and/or Border Police.
	12		<b>Partial Checkpoints</b> An established checkpoint operating periodically.
	90		<b>Road Gates</b> A metal gate, often manned by IDF, used to control movement along roads.
	56		<b>Roadblocks</b> A series of 1 metre high concrete blocks used to obstruct vehicle access.
	191		<b>Earthmounds</b> A mound of rubble, dirt and/or rocks used to obstruct vehicle access.
	14	35.9 km	<b>Trenches</b> A ditch used to prevent vehicle crossing.
	87	86 km	<b>Road barriers</b> Road barriers placed alongside major roads prevent movement across the roads.
	15	15 km	<b>Earth Walls</b> A continuous wall or series of earth mounds used to restrict access.
	<b>539</b>		<b>TOTAL (11 July 2007)</b>





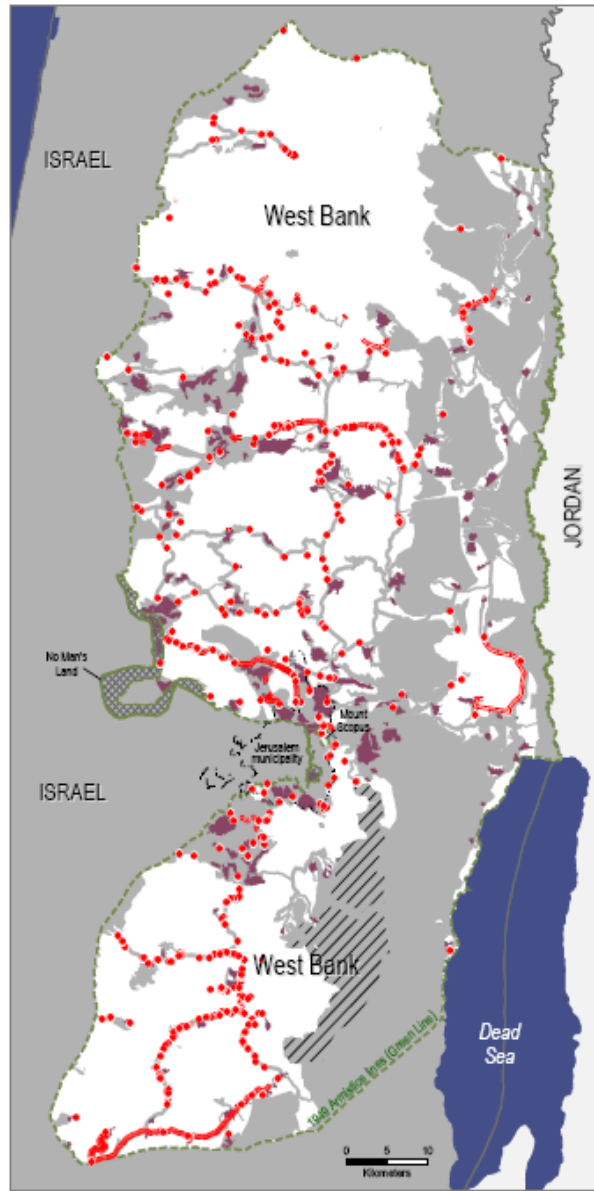
## No real improvement of Palestinian movement in West Bank

### Total number of checkpoints and roadblocks



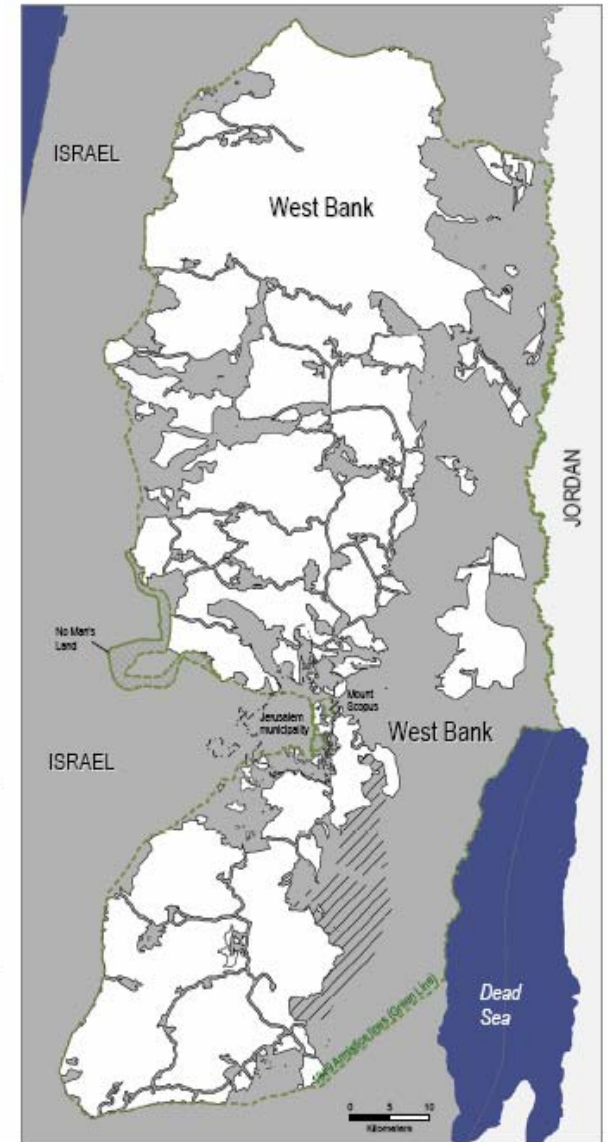
\* Figures include checkpoints and physical obstacles. Data collected by OCHA

### Location of the closures



Source: see Annex 2 and 3.

### Palestinian enclaves in the West Bank



Source: see Annex 2 and 3.

# Palestinian access to hospitals in East Jerusalem

OCHA, 2007

“Palestinians rely on hospitals in East Jerusalem for routine, emergency and specialist treatment... The need to get a permit to reach a hospital, the difficulties in traveling to East Jerusalem because of the Barrier and checkpoints, in addition to the general unpredictability of access for patients, has led to a 50% drop in patient admissions in these hospitals. The number of out-patients also fell by more than half between 2002 and 2003, and continues to drop.

Medical staff from the West Bank also faces difficulties getting to work...approximately 70% are West Bank residents requiring permits.”









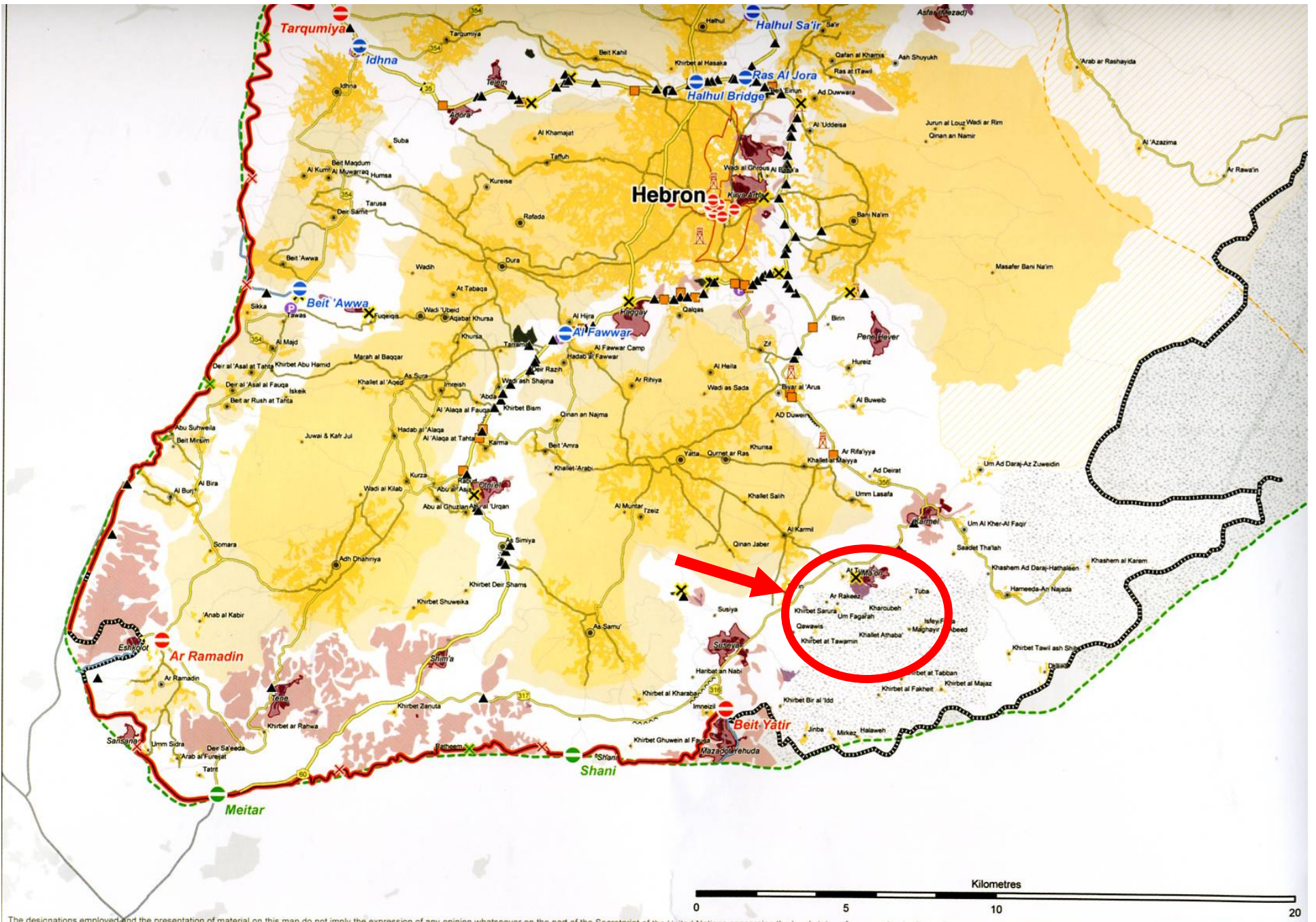






## October 2007 delegation

- travel restrictions, access problems
- territorial expansion in the oPT
- violence against civilians



The designations employed and the presentation of material on this map do not imply the expression of any opinion whatsoever on the part of the Secretariat of the United Nations concerning the legal status of any country, territory, city or area or of its authorities, or concerning the delimitation of its frontiers or boundaries. Reproduction and/or use of this material is only permitted with express reference to "United Nations OCHA oPt" as the source.





Copyright 2007, Alan F. Meyers, afmeyers@bu.edu











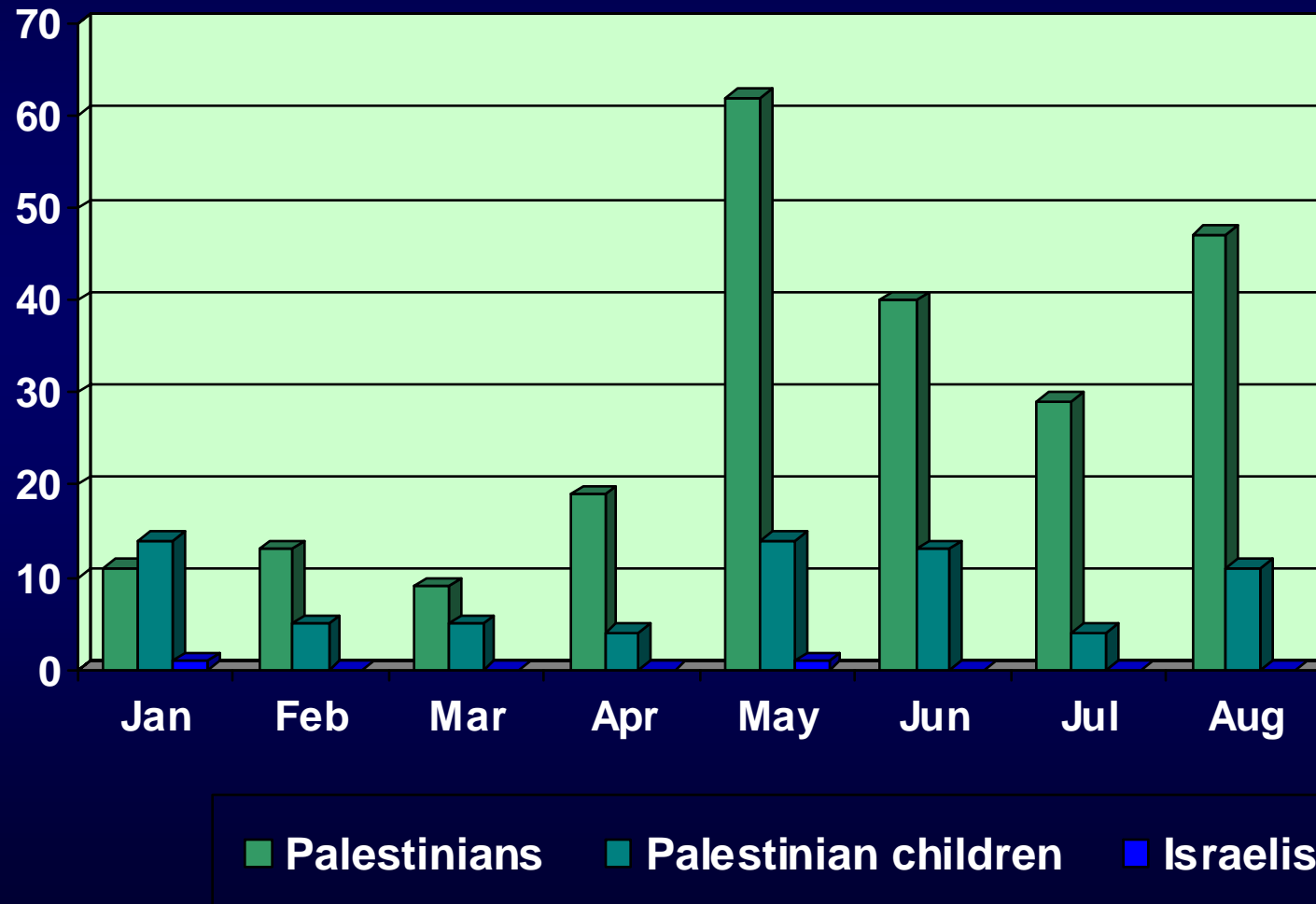


## October 2007 delegation

- travel restrictions, access problems
- territorial expansion in the oPT
- violence against civilians

# DEATHS IN THE CONFLICT, 2007

source: OCHA





























Copyright 2007, Alan F. Meyers, [afmeyers@bu.edu](mailto:afmeyers@bu.edu)

bullets fired into bed  
where children sleep























## Humiliation: the invisible trauma of war for Palestinian youth

Giacaman R et al. *Public Health* 2007;121:563

- N = 3415 10<sup>th</sup> – 11<sup>th</sup> grade students in Ramallah district
- survey questions derived from WHO, Gaza Community Mental Health Programme, focus groups
- dose-response effect seen with psychological and somatic symptoms increasing with increasing number of forms of humiliation experienced

# Humiliation: the invisible trauma of war for Palestinian youth

Giacaman R et al. *Public Health* 2007;121:563

