

# The CDC Automated Disaster and Emergency Planning Tool (ADEPT)

**A Standardized Process for  
Public Health  
Emergency Planning**

# Background

- Public health officials face many challenges to efficient and effective disaster and emergency planning
- Public health professionals may not always have immediate access to the plans, procedures, or guidance for decision making and resource allocation during an emergency or disaster

# Learning Objectives

- To provide an overview of the *Automated Disaster and Emergency Planning Tool (ADEPT)*
- To facilitate development and maintenance of evidence-based and effective emergency operations plans

# Problem Issues in Current Standard Emergency Planning

- Cumbersome to use
- Checklists that tend to fail
- Focus on tasks rather than management
- Many possible hazards and scenarios
- Lack of clear objectives and measures of effectiveness

# Challenges of Emergency Planning

- Plans must be written by *consensus* among *all* of the *stakeholders*
  - Planners
  - Responders
  - Managers
- Activities must be coordinated among all stakeholders
- “The *planning* is more important than the *plan*”
  - The *planning* is a way for everyone to learn the plan and to share in decision making
  - The *plan* should be viewed as a contract which documents the negotiation among all stakeholders

# What is ADEPT?

- Automated Disaster and Emergency Planning Tool
- A software tool and a planning process for writing and improving all-hazard, all-media public health emergency operations plans

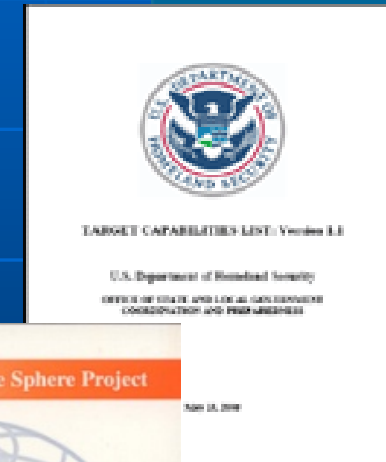
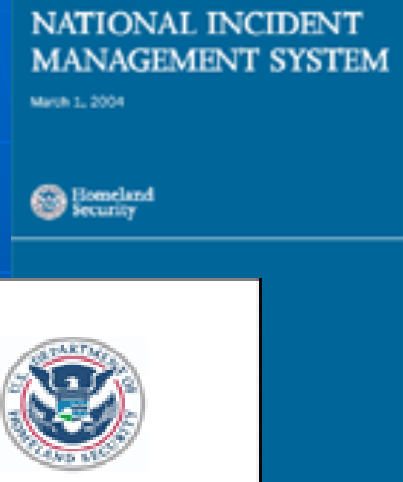


# Added Value of Electronic Plans

- Rapidly updated and distributed
  - References
  - Standards
  - Activities
- Available in different versions according to connectivity
  - Static (USB drive)
  - Dynamic version (Web-based)
- Plan format may be easily manipulated according to output needs
  - MS Word (.doc)
  - Internet Explorer (.html)
  - Acrobat (.pdf)
  - Email (.rtf)
- E-plans are searchable as a relational database
  - By CIO/Div/Branch/Office
  - By timeline
  - By job description
  - By task

# ADEPT Integrates

- National Incident Management System (**NIMS**)
- Target Capabilities List (**TCL**)
- **Sphere** Project minimum standards
- HHS National Healthcare Preparedness Program (**NHPP**) capabilities/priorities
- Customized **local** standards of care





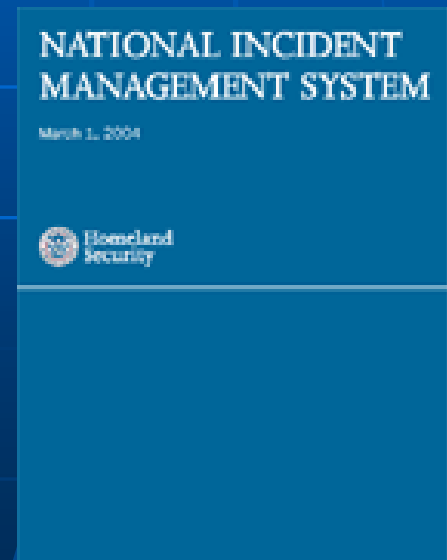
# HSPD-5: Management of Domestic Incidents

- Established NIMS
- Established National Response Framework (NRF)
- Federal departments/agencies require adoption of NIMS as requirement for Federal preparedness assistance
- Coordinate with State/local governments and private and nongovernmental sectors to ensure adequate planning, equipment, training, and exercise activities
- Provide assistance to State/local governments to develop all-hazards plans and capabilities, and ensure State, local, and Federal plans are compatible

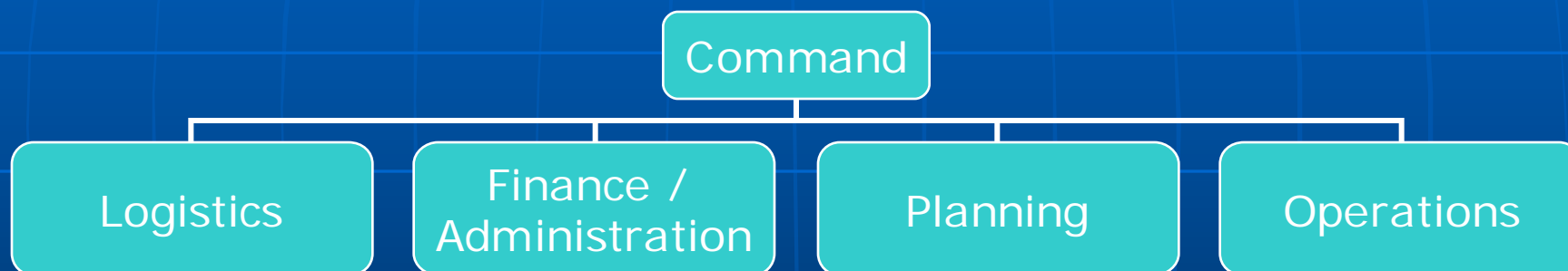


# HSPD-5 NIMS

- National/International Recognized Command and Control System
- Centralized Leadership and Planning
- Unity of Command
- Chain of Command
- Span of Control
- Adaptable to Situations



# HSPD-5 NIMS



# HSPD-8: National Preparedness

- Called for a National Preparedness Goal that established *measurable priorities, targets*, and a *common approach* to developing needed *capabilities*
- Uses a Capabilities-Based Planning approach

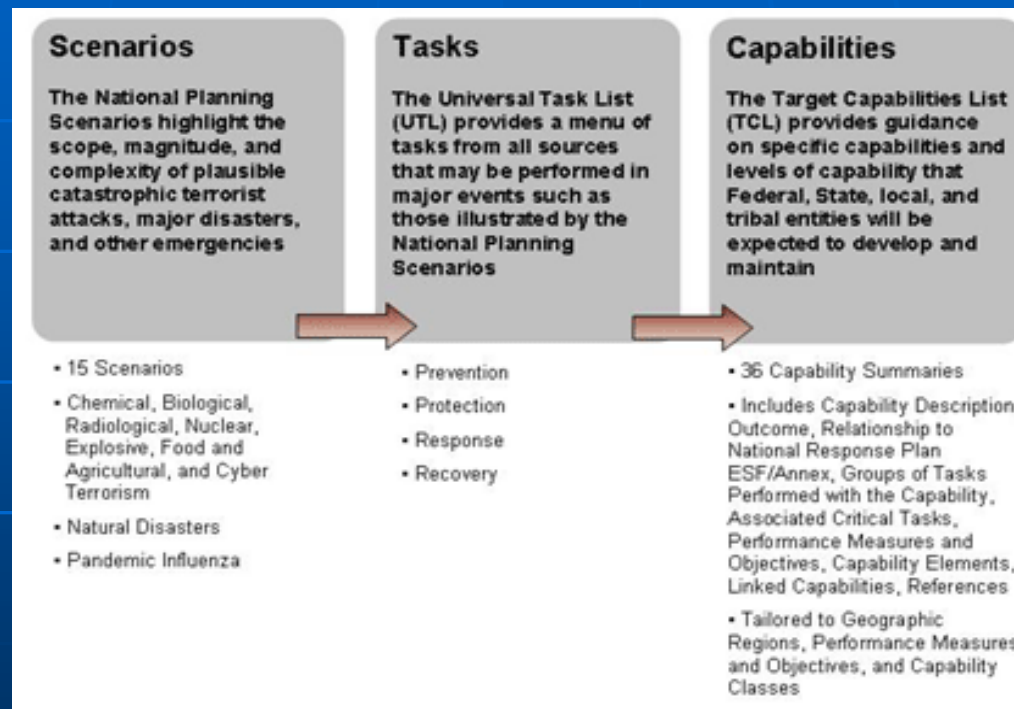


# HSPD-8: Capabilities-Based Planning

- Central objective - Identify target levels of capabilities to perform critical tasks
- Identify and develop critical capabilities from TCL to perform critical tasks from Universal Task List for National Planning Scenarios

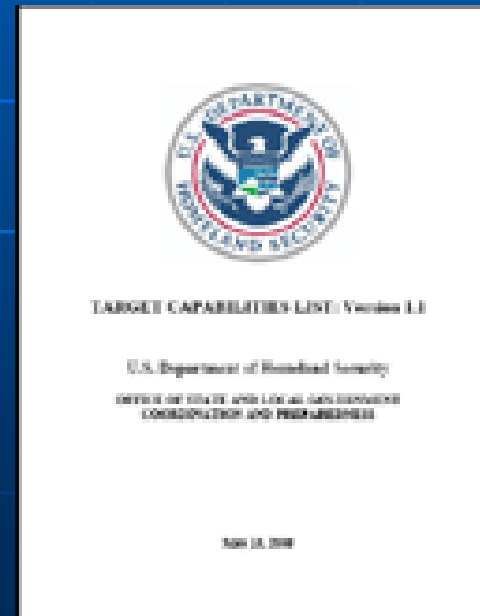


# HSPD-8: Capabilities-Based Planning

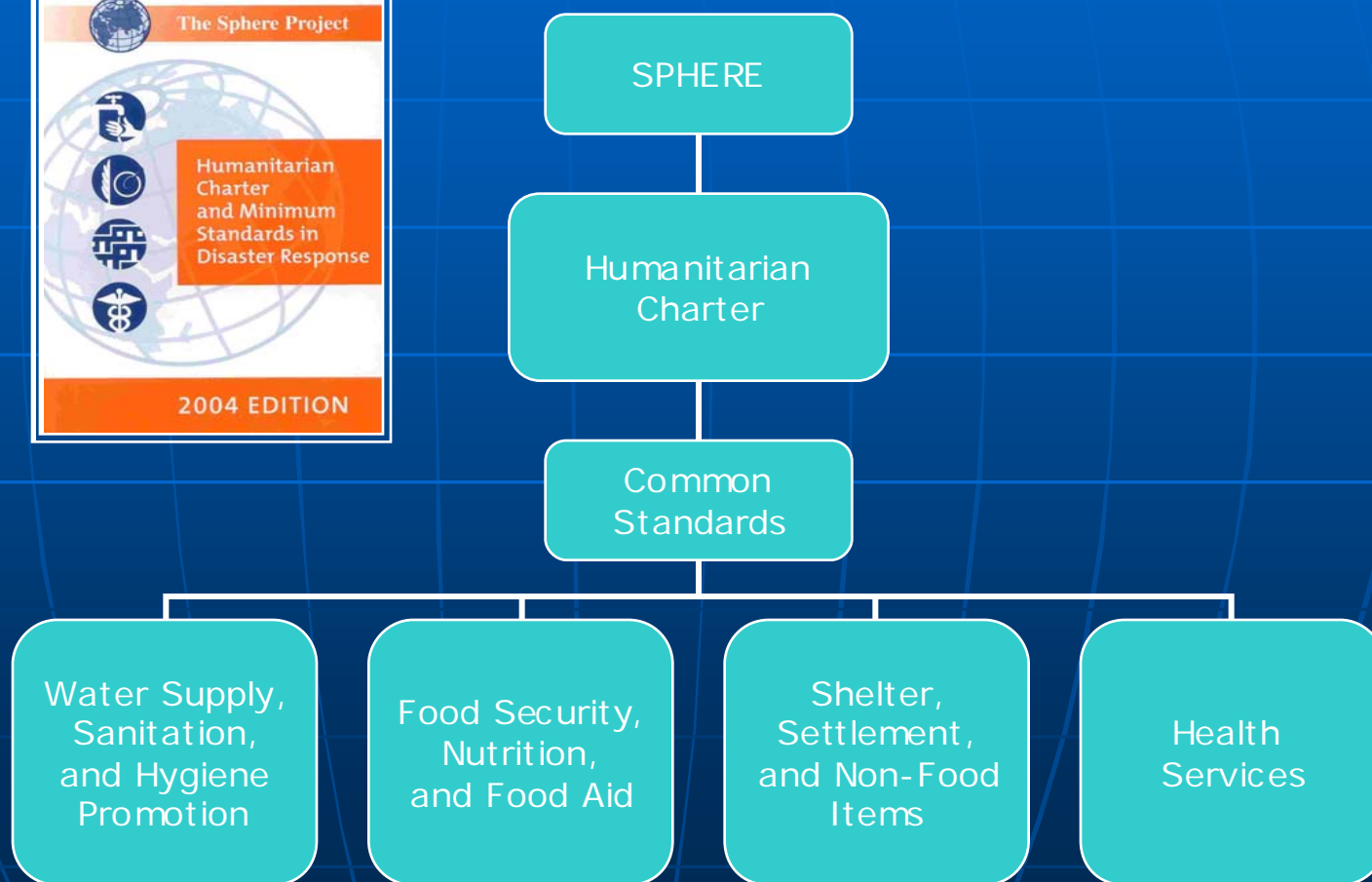
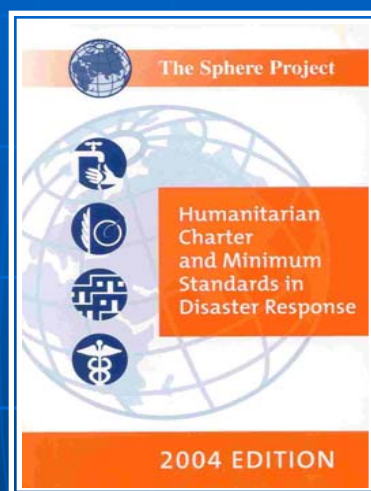


# Target Capabilities List (TCL)

- 37 Capabilities
- Defines the capabilities, outcomes, measures, and risk-based target levels of capability
- Types of Capabilities
  - Common
  - Prevent
  - Protect
  - Respond
  - Recover



# Sphere - Minimum Standards for Disaster Response





# Sphere

## Common Standards

- Chapter for 8 common standards
- 4 Specific sector chapters
- Each common standard and sector chapter contains:
  - Minimum Standards
  - Key Indicators
  - Guidance Notes

# Integrating NIMS Management with SPHERE and TCL Capabilities





# ADEPT

## FY07 Activities

- ❑ Radiological and Nuclear Incidents Sub-Annex to CDC Emergency Operations Plan (EOP)
- ❑ CDC Hurricane Annex to CDC EOP
- ❑ Revision of Public Health EOP for State of Florida Department of Health

# ADEPT FY08: Nations at High Risk for Pandemic Influenza



- Vietnam
- Cambodia
- Laos
- Thailand

# ADEPT Partners

## ■ Implementing Partners

- 3 Sovereign nations
- 4 US territories
- 10 US and foreign hospitals
- Florida State Department of Health
- 4 nations in Southeast Asia that are high risk for pandemic influenza

## ■ Developmental Partners

- Microsoft ©
- US Department of Defense
- World Health Organization



# Conclusions

- ADEPT is easy to use during live incidents
- ADEPT is useful for emergency planners
- ADEPT is evidence-based
- ADEPT has been applied successfully domestically and internationally

# Recommendations

- Public health emergency planners should consider utilizing ADEPT to assist development and maintenance of their own customized emergency operations plans for prevention and control of public health emergency events
- Public health professionals can inform their MOH/SHA/LHD/organization about ADEPT



# Demonstration of ADEPT: Automated Disaster and Emergency Planning Tool



# Questions or Comments?

Anthony J. Santarsiero  
CDC/NCEH/ATSDR/OD/OTPER

[ajs1@cdc.gov](mailto:ajs1@cdc.gov)

(770) 488-7995