

Practicums in International Health



Karen Caldwell, MPH
Management Sciences for Health

Overview

- Finding the Practicum Site
- Conducting a KAP Study
- Challenges
- Outcomes
- Lessons learned
- Update

Finding the Practicum Site

- Updating CV
- Knowing what you want
- Knowing what you bring
- Networking



Practicum Site

MSH PRISM II Project

Kankan, Guinea

- Guinea PRISM Project 1997-2007
- Improve quality and use of FP and RH services
- Prevention of STIs and HIV
- Region: Upper Guinea

My Practicum

Work with the primary consultant, program manager and M&E team to conduct a study of the Knowledge, attitudes and practices (KAP) of the health providers and target population of a pilot cervical cancer screening program

Pilot Cervical Cancer Screening Program

- 3 Urban Centers: Faranah, Siguiiri, Kankan
- 11 Urban Health Centers, 3 Regional Hospitals
- 42 Trained service providers implementing program

Map of Guinea



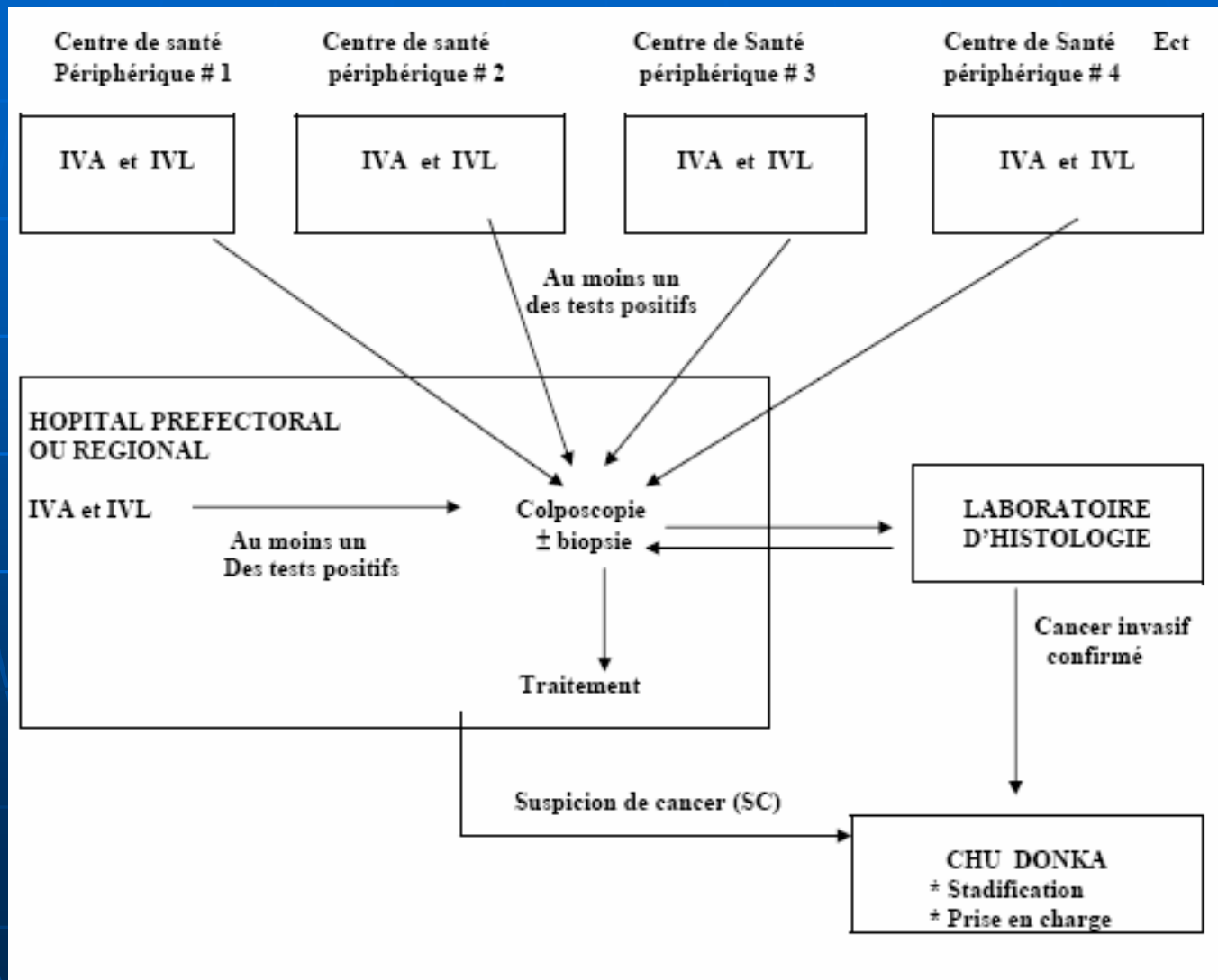
Map No. 4164 Rev. 3 UNITED NATIONS
June 2004

Department of Peacekeeping Operations
Cartographic Section

Norms and Procedures

- **Target population**– Women between the ages of 25 – 59.
- **Population Coverage Goal** – Minimum of 5 women screened / day / site.
- **Frequency of screening**– Target is to screen each women 1/lifetime. Counseled to return for screening 1/year.
- **Screening method** - VIA followed by VILI.
- **Doctors, Midwives and Nurses** are trained in **VIA/VILI**. Doctors conduct all treatment.
- **Integrated Method** used to reach the target population.

Program Organization



Screening February – May 2006

Service Delivery Site	Number of Clients Projected	Number of Clients Screened	Coverage Rate
Faranah	915	588	64.26%
Sigiri	1,310	337	25.72%
Kankan	2,060	1,592	77.28%

KAP Study Objectives

- Identify KAP in the following populations:
 - Trained service providers
 - Screening target population
- Recommend strategies and activities that will improve the cervical cancer screening program and the management of cervical cancer in Upper Guinea.

Practicum Activities

In conjunction with PRISM II staff:

- Develop 3 questionnaires
- Develop study design
- Recruit and hire interviewers to conduct study
- Train interviewers conducting study
- Oversee testing of questionnaire
- Oversee data collection and respond to roadblocks in data collection

Additional Activities

- Translate quarterly report from French to English
- Act as translator for a MSH staff person visiting from HQ
- Rapidly compile data in excel spreadsheet
- Write trip report / final paper

Outcomes

- 333 Interviews conducted
- Data handed off to M&E staff for evaluation
- Final Paper for International Health Concentration

Preliminary Data

- Forms and registries
- Patient counseling and consent
- Follow up training recommended
- IEC and BCC campaign
 - Understanding CC
 - Some resistance to pelvic exams
 - Confusion between HIV and CC screening
- Variations from town to town

Challenges

- National Strike
 - Office shut down
 - Potential evacuation to Mali
- Communication
 - Primary consultant and Chief of Party in Conakry
 - Language – HQ and field office
- KAP Study
 - Paying interviewers
 - Data Collection
- Time
 - Other priorities
 - Added activities to SOW
 - Two month practicum with lots of activities

Rewards

- Working with outstanding and dedicated field team
- Meeting people who were benefitting from PRISM II projects
- Experiencing the intricacies and difficulties of a working field project
- Learning by doing and doing important work

Lessons Learned

- Expect the unexpected
- Flexibility and creativity
- There is never enough time or enough resources



Questions / Comments



Karen Caldwell, MPH
Management Sciences for Health
kcaldwell@msh.org