

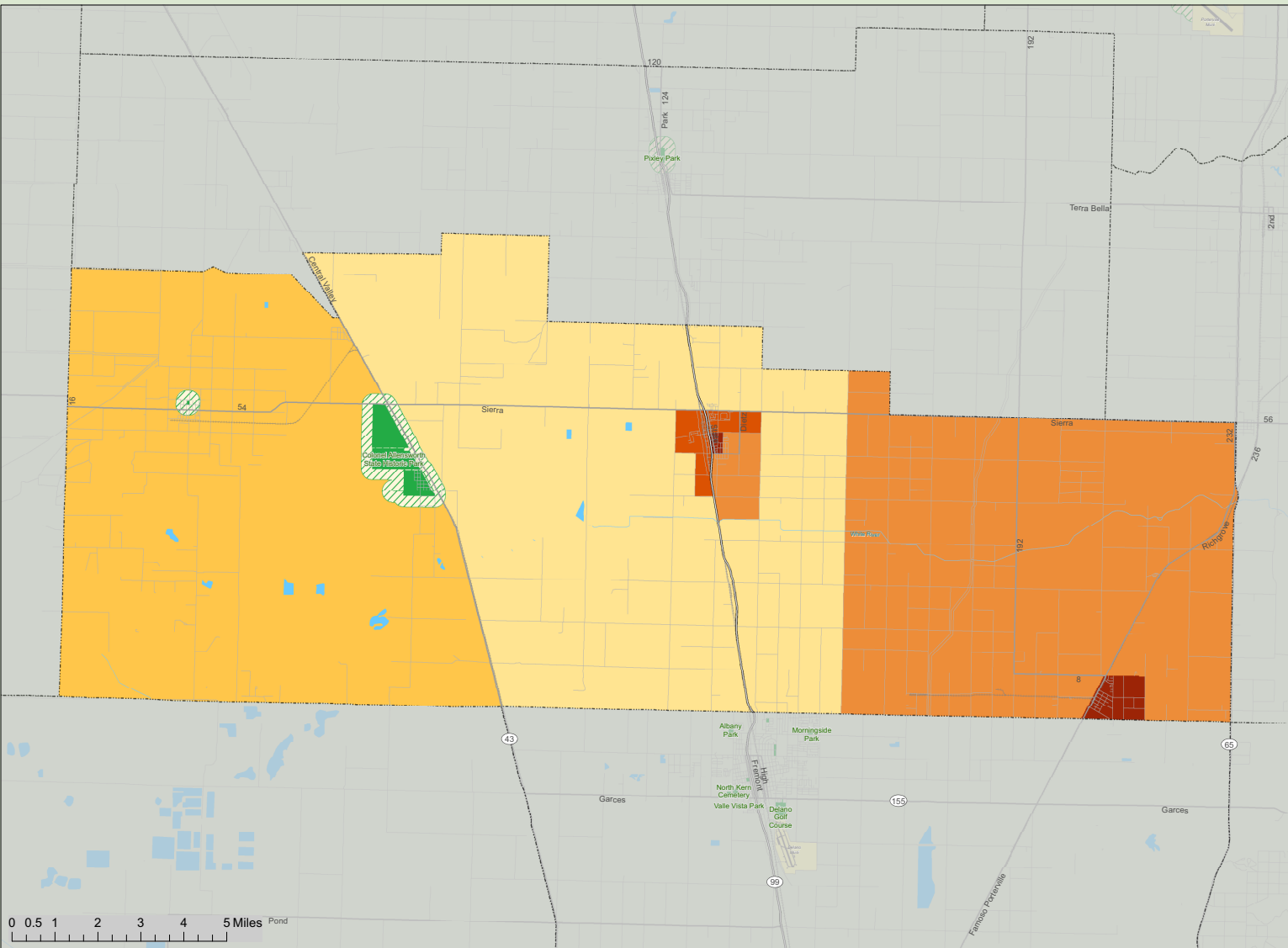
City of Earlimart, CA

Park Equity Analysis

The TPL Park Equity Model analyzes public access to existing parks and open space. The analysis incorporates a two-step approach: 1) determines where there are gaps in park availability across the landscape, and 2) constructs a demographic profile to identify gaps with the most urgent need for parkland.

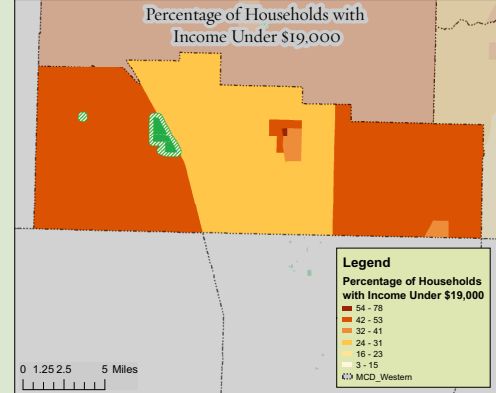
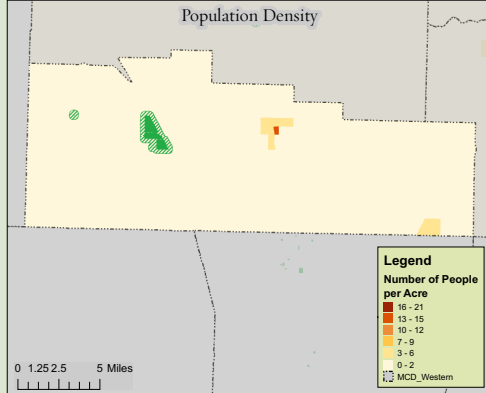
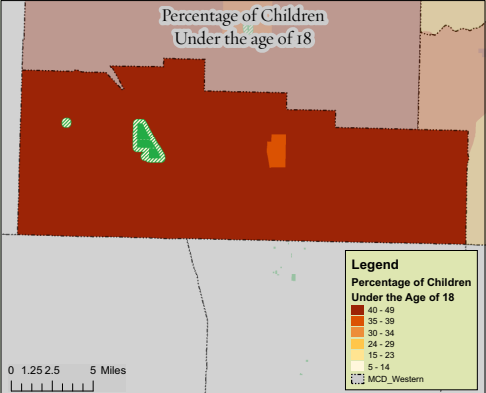
Park gaps are based on a service area (walking distance) of an eighth-mile radius for parks less than one acre and a quarter-mile radius for parks greater than one acre. In this specific analysis, service areas do not account for barriers across the landscape. Demographic profiles are based on U.S. Census 2000 block group data to determine park need. The percentage of children under 18 and the percentage of individuals with income less than \$19,000 are both equally weighted at twenty-five percent a piece with density (people per acre) weighted at fifty percent.

Areas in light tan show a low need for parks, areas in orange show a moderate need for parks, and areas in dark red show a high need for parks.



Legend

Protected Lands	Transportation	Park Equity Needs Analysis
Park Buffer	Limited Access	High
Waterbodies	Highway	Moderate
	Major Road	Low
	Local Road	
	Railroad	



Special thanks to the following data providers: Geolytics Inc., GreenInfo, and ESRI.
 Map created by the Trust for Public Land on June 13, 2007
 Created in ArcMap 9.1b
 Map Projection: NAD 1983 UTM Zone 11N
 TPL, The Trust for Public Land, and The Trust for Public Land logo are trademarks of The Trust for Public Land.
 Copyright © 2007 The Trust for Public Land.
 www.tpl.org
 Information on this map is provided for purposes of discussion and visualization only.

