

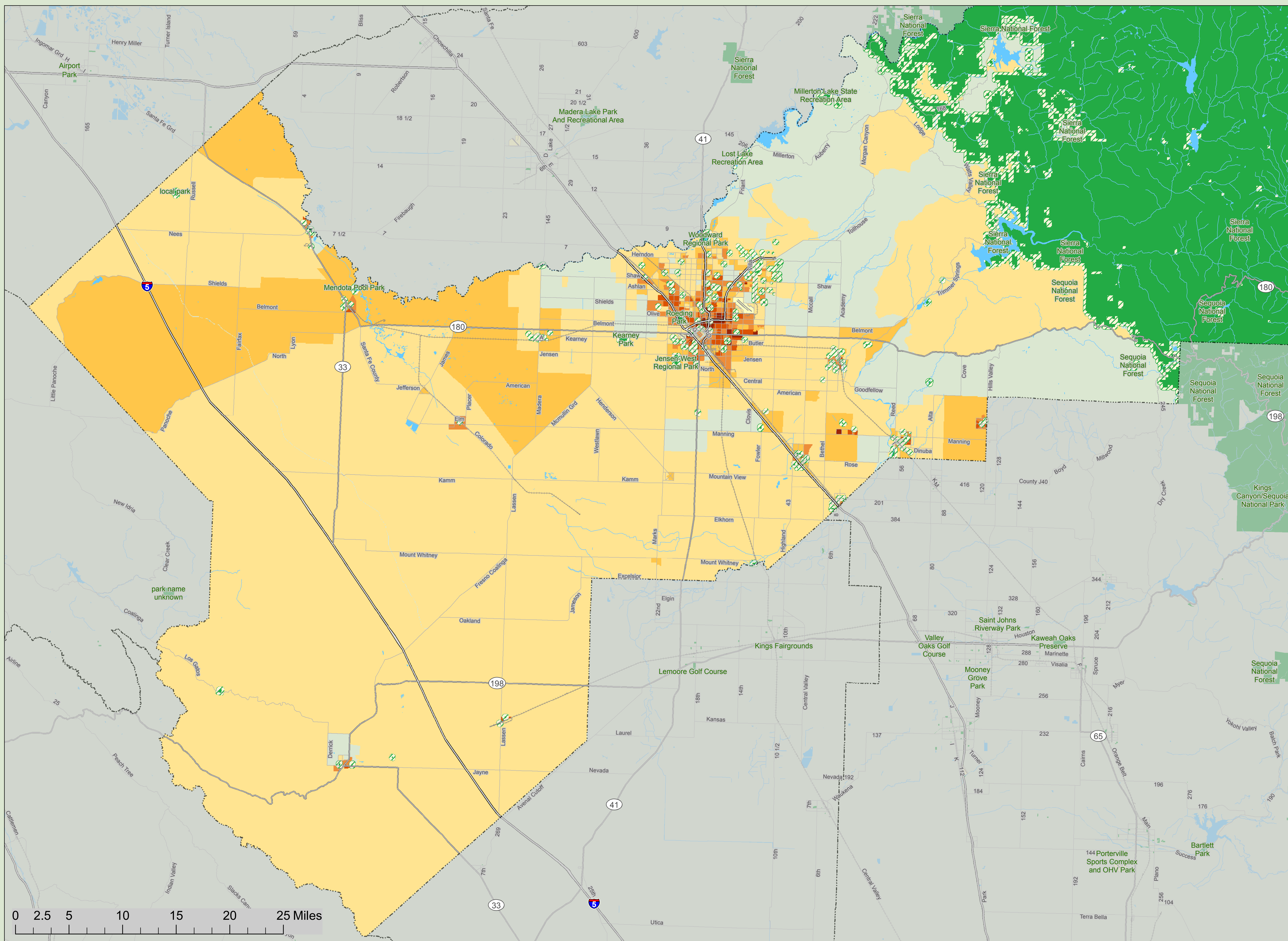
Fresno County, CA

Park Equity Analysis

The TPL Park Equity Model analyzes public access to existing parks and open space. The analysis incorporates a two-step approach: 1) determines where there are gaps in park availability across the landscape, and 2) constructs a demographic profile to identify gaps with the most urgent need for parkland.

Park gaps are based on a service area (walking distance) of an eighth-mile radius for parks less than one acre and a quarter-mile radius for parks greater than one acre. In this specific analysis, service areas do not account for barriers across the landscape. Demographic profiles are based on U.S. Census 2000 block group data to determine park need. The percentage of children under 18 and the percentage of individuals with income less than \$19,000 are both equally weighted at twenty-five percent a piece with density (people per acre) weighted at fifty percent.

Areas in light tan show a low need for parks, areas in orange show a moderate need for parks, and areas in dark red show a high need for parks.



Legend

Fresno County	Transportation	Park Equity Needs Analysis
Protected Lands	Limited Access	High
Park Buffer	Highway	Moderate
Waterbodies	Major Road	Low
	Railroads (Local)	

