



Patterns of Utilization and Costs for Persons with Serious Mental Illness Involved in the Criminal Justice System

American Public Health Association  UNIVERSITY OF SOUTH FLORIDA
Philadelphia, PA 11/10/2009

Presenter: Gregory B. Teague, Ph.D.
Louis de la Parte Florida Mental Health Institute
College of Behavioral & Community Sciences
University of South Florida

Presenter Disclosures

- The following personal financial relationships with commercial interests relevant to this presentation existed during the past 12 months
 - Industry-sponsored grant for research: Financial support for this project provided by Ortho-McNeil Janssen Scientific Affairs, LLC



- No other relationships to disclose

Sample & Data

- Population: 3,769 persons with SMI with at least one day in jail 7/02-6/03 in one FL county
- Data
 - Drawn from collaborative database incorporating jail and other county services, statewide arrest and service events, & Medicaid
 - Individual characteristics, incarceration, public behavioral & general healthcare, and social services
 - Expenditures
 - One year prior to index year and two years following
 - Grouped in 90-day periods for analysis

Study Sample: Demographic & Clinical Characteristics

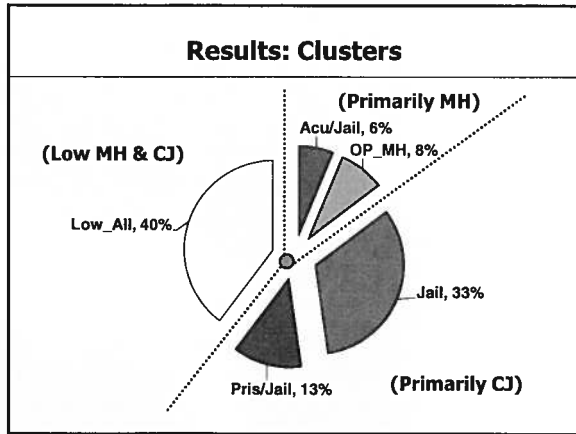
Age	Mean ± s.d. = 36.0 ± 10.3		
Gender	59% Male, 41% Female		
Race / Ethnicity	74% White, 20% Black, 5% Hispanic, 1% Other		
Psychiatric Diagnosis	22% Psychotic, 29% Bipolar, 31% Major Depression, 18% Other mood		
Crime	57% Felony, 86% Misdemeanor		
SUD Diagnosis	67%	History of Homelessness	13%

Methods: Cluster Analysis

- Purpose
 - ID groups of people with similar utilization patterns
 - Examine differences in characteristics
 - Derive inferences: alternative intervention strategies
- Input variables = days of use in 4 categories, 4 yrs
 - 2 Mental Health (MH): ● Outpatient (OP); ● Acute (hospital, emergency, crisis)
 - 2 Criminal Justice (CJ): ● Jail; ● Prison
- Data modifications
 - Annual days adjusted for proportion of time in county
 - Square root transformation
 - Standardized for clustering procedure

Cluster Identification & Comparison

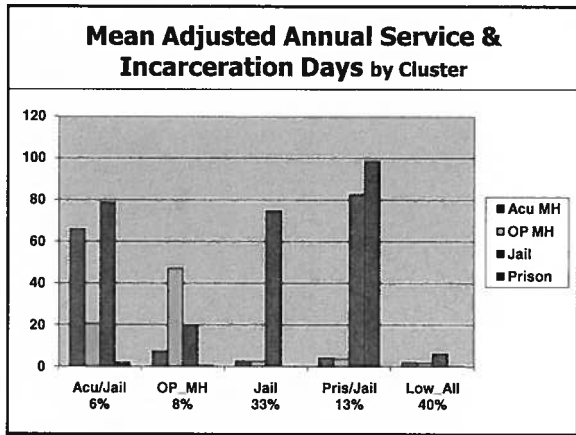
- 2-step cluster procedure (SPSS), multiple runs
 - In random order (results sensitive to order)
 - # of clusters not specified
 - Variance in #s of clusters produced, but solutions with same #s of clusters very similar
- # of clusters selected empirically and theoretically
- Multiple second-level cluster analysis
 - Cluster assignments from first set as input; similar
 - Selected solution close to first-level with good fit
- Comparisons: univariate (anova, chisquare) & multivariate (multinomial logistic regression)



Clusters: Service Patterns & Size

Label	Pattern	%
Acu/Jail	High use of MH inpatient, emergency, and involuntary hospitalization; high jail time	6%
OP_MH	High use of MH outpatient services; other MH use low; lower incarceration	8%
Jail	High # of days of incarceration in jail; low MH and prison	33%
Pris/Jail	High # of days of incarceration in prison and jail; low MH	13%
Low_All	Low in all categories	40%

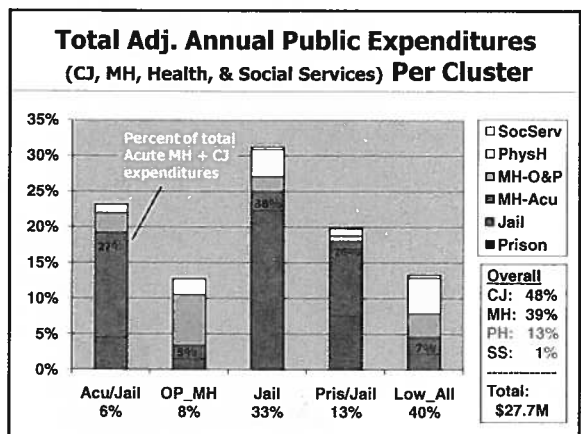
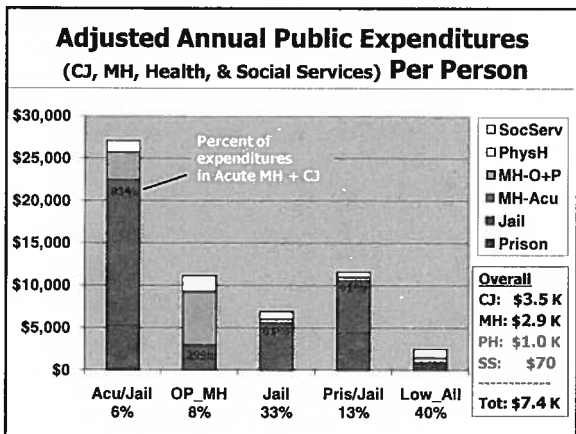
USF UNIVERSITY OF SOUTH FLORIDA
COLLEGE OF PROFESSIONAL & ADVANCED STUDIES



Arrests & Charges

Cluster	Annual Arrests		% w/ Felony	Relatively Frequent Charge Categories
	Obs.	Adj.		
Acu/Jail	1.2 ²	2.6 ¹	71% ²	Violation; Public; Person
OP_MH	.8 ³	.9 ³	41% ³	
Jail	1.5 ¹	2.0 ²	75% ²	Drug; Public
Pris/Jail	1.2 ²	2.8 ¹	85% ¹	Drug; Property
Low_All	.8 ³	.9 ³	35% ⁴	
Total	1.1	1.6	43%	% with charge: Property (45%), Person (39%), Drug (35%), Public (27%), Violation (15%)

(Colors & superscripts indicate significantly different rates [p<.05])



Demographic & Clinical Characteristics

■ Significant variance across clusters

	Chi-sq	df	p (2-s)
Age group	69.1	12	< .000
Gender	73.3	4	< .000
Race / Ethnicity	106.0	12	< .000
Diagnosis	227.0	12	< .000
SUD diagnosis	73.5	4	< .000
Medicaid	118.9	4	< .000
Homeless	123.1	4	< .000
Juvenile Justice history	8.5	4	.076

USF UNIVERSITY OF SOUTH FLORIDA COLLEGE OF BEHAVIORAL & COMMUNITY SCIENCES 13

Clusters & Characteristics: Odds Ratios

(MLR Reference categories: Low_All & most others are largest)

* < .05, ** < .01, *** < .000, † NS

	Adv/Jail	OP_MH	Jail	Pris/Jail	Low_All
< 21		.5 *		.5 *	+
40-50		1.4 *		.6 ***	
51-64	1.7 *		.6 **	.4 ***	+
Female	.6 ***	1.4 **	.8 ***	.6 ***	+
Black	1.4		1.9 ***	2.9 ***	-
Hispanic	3.5 ***				
Psychotic	6.3 ***	6.4 ***	1.7 ***	2.5 ***	-
Bipolar	2.5 ***	3.7 ***	2.0 ***	2.6 ***	-
Oth. Mood	1.8 *	.4 ***	.6 ***	.4 ***	
SUD Dx.	2.3 ***	2.1 ***	1.9 ***	2.3 ***	-
Homeless	2.8 ***	1.6 *	3.3 ***	2.6 ***	-
Medicaid	2.2 ***	2.3 ***	.8		
Juv. Just.			1.6 **		

USF UNIVERSITY OF SOUTH FLORIDA COLLEGE OF BEHAVIORAL & COMMUNITY SCIENCES 14

Summary: Characteristics Associated With MH & CJ Use Patterns

Age	Young adults & prison; older & OP-MH
Males	Incarceration & acute MH; less OP-MH
African-Americans	Incarceration, especially prison
Hispanics	Acute MH + Jail
Psychotic disorders	Acute MH + Jail; OP-MH
Major depression	Lower use overall
SUD diagnosis	All high-use patterns
Homelessness	Any high service use, esp. incarceration & high-intensity MH services

USF UNIVERSITY OF SOUTH FLORIDA COLLEGE OF BEHAVIORAL & COMMUNITY SCIENCES 15

Implications for Interventions

- Co-occurring SUD/SMI in community & forensic populations
- Community-based MH services for different groups
 - People with arrest history not engaged in MH services
 - People with arrest history using acute MH services
 - Youth in transition
- Homelessness prevention
 - Supportive housing programs for homeless persons w/ SMI
 - Re-entry focus on housing & service engagement

USF UNIVERSITY OF SOUTH FLORIDA COLLEGE OF BEHAVIORAL & COMMUNITY SCIENCES 16

Other Implications • Limitations

- More general strategies in response to selective service access & pervasive system/ community/ societal issues
 - E.g., engagement in culturally acceptable services for African Americans & other minorities with SMI; males
- Limitations
 - Single county/state & time period, jailed persons only
 - Data for only public services and expenditures
 - No data on treatment in prison/jail
 - Prison/jail expenditures data not person-specific
 - Incomplete MH/SA data during one year
 - Clinical diagnosis, partial demographics

USF UNIVERSITY OF SOUTH FLORIDA COLLEGE OF BEHAVIORAL & COMMUNITY SCIENCES 17

Contact Information

Gregory B. Teague, Ph.D.
 Department of Mental Health Law & Policy
 Louis de la Parte Florida Mental Health Institute
 College of Behavioral & Community Sciences
 University of South Florida
 13301 Bruce B. Downs Blvd
 Tampa, FL 33612
 Voice: 813-974-7185
 E-mail: teague@fmhi.usf.edu

USF UNIVERSITY OF SOUTH FLORIDA COLLEGE OF BEHAVIORAL & COMMUNITY SCIENCES 18