

	<h2>Identifying gaps in the environmental public health system to perform the essential environmental health services</h2>
	<p>Patrick O. Bohan, MSEH, MS, PhD, RS Associate Professor East Central University Ada, OK</p>

	<h2>Presenter Disclosures</h2> <p>Patrick Bohan, PhD</p>
	<p>(1) The following personal financial relationships with commercial interests relevant to this presentation existed during the past 12 months: "No relationships to disclose"</p>

	<h2>Definition</h2>
	<p>"the art and science of <i>protecting</i> against environmental factors that may adversely impact <i>human health</i> or the <i>ecological balances</i> essential to long-term human health and environmental quality, whether in the natural or human-made environment".</p> <p>Committee on the Future of Environmental Health. "The Future of Environmental Health: Part two," <i>Journal of Environmental Health</i> 55 (1993): 42-45.</p>

	<h2>Roots of Environmental Health</h2>
	<p>FIGURE 1. Crude death rate* for infectious diseases — United States, 1900-1996†</p> <p>*Per 100,000 population per year. †Adapted from Armstrong GL, Conr LA, Pinner RW. Trends in infectious disease mortality in the United States during the 20th century. <i>JAMA</i> 1999;281:61-6. ‡American Water Works Association. Water chlorination principles and practices: AWWA manual M20. Denver, Colorado: American Water Works Association, 1973.</p>

	<h2>Impact</h2>
	<ul style="list-style-type: none"> ■ Inspections became customary <ul style="list-style-type: none"> - Quotas - Used to evaluate staff ■ Limited workforce preparation ■ Focus on infectious diseases ■ EPA and fragmentation ■ Emerging issues – how prepared are we?

	<h2>Where We Are</h2>
	<ul style="list-style-type: none"> ■ Emphasis on enforcement ■ Emerging environmental health problems ■ Disconnect between health and environment ■ Measure the number of activities ■ What is accomplished by doing inspections? ■ Lost sense of purpose?

Enhancing the Environmental Health System

- Core functions
- Essential PH Services
- Essential EH Services
- NPHPS
- Accreditation
 - PHAB

Vision

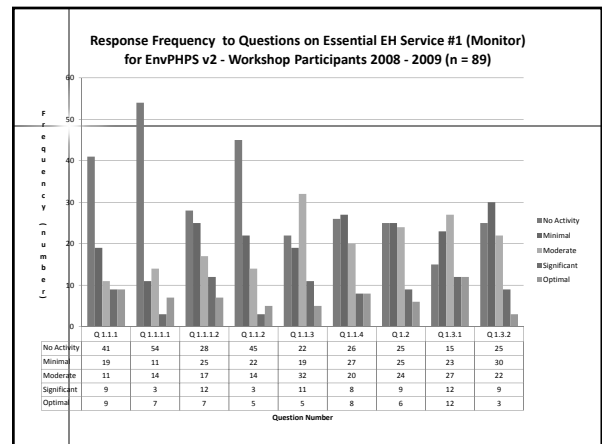
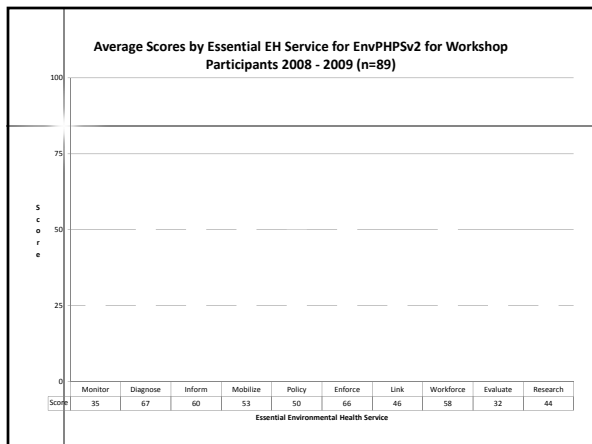
- Nationally
 - Build consistency
 - Build capacity
 - Build accountability
- National Environmental Public Health Performance Standards project

Value

- Provide a clear sense of purpose
- Elevates us to a complete and comprehensive public health program
- Can assist with budget justification
- Can be applied to a system or program
- Orient new and existing staff

Scoring Matrix

- No activity= 0%
- Minimal activity= >0 – 25%
- Moderate activity= >25 – 50%
- Significant activity= >50 – 75%
- Optimal activity= >75 – 100%



Gaps in Essential EH Service #1 (Monitor)

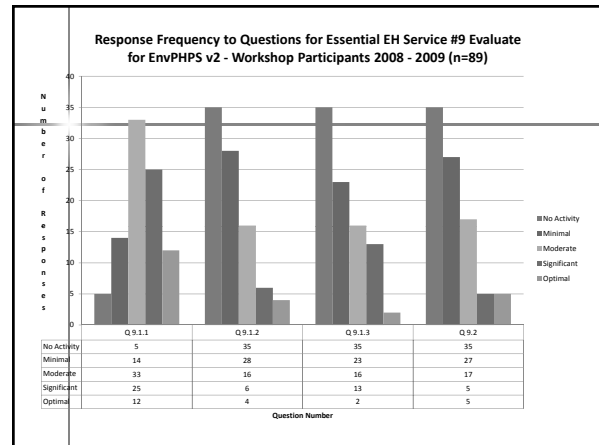
- 1.1.1 *Has a community environmental health assessment been completed?*
 - 1.1.1.1 *Is the community environmental health assessment updated at least every 3 years?*
 - 1.1.1.2 *Are existing and potential EH trends identified by comparing analysis results to relevant benchmarks?*

Gaps in Essential EH Service #1 (Monitor)

- 1.1.2 *Have the data from the community environmental health assessment been compiled into an updated profile?*
- 1.1.3 *Are EH data prepared in a format that allows for the clear communication and interpretation by the public and policy makers?*
- 1.1.4 *Is information about the community EH profile easily available to all?*

Gaps in Essential EH Service #1 (Monitor)

- 1.2 *Are appropriate tools, such as GIS, used to support the profile databases?*
- 1.3.1 *Are data collected from a range of sources involved in environmental and public health protection?*
- 1.3.2 *Have plans been made to address gaps in information and data needed?*



Gaps in Essential EH Service #9 (Diagnose)

- 9.1.1 *Are environmental public health programs and services routinely evaluated with a focus on accomplishments and achievement or program goals?*
- 9.1.2 *Is an assessment completed that measures the satisfaction of stakeholders and residents with environmental public health services?*
- 9.1.3 *Is an action plan in place and implemented to address needed improvements to services and policies identified through evaluations?*

Gaps in Essential EH Service #9 (Diagnose)

- 9.2 *Has the EH System or program evaluated the effectiveness of the multiple agencies with responsibility in areas of environmental health in terms of their coordinated and timely responses to all constituents?*

	Contact Information
	Patrick Bohan, PhD 580-559-5658 pbohan@ecok.edu