

Roundtable: Evaluation of a multi-site asthma program initiative: Linking program activities with distal outcomes to demonstrate systems change

[Lynn D. Woodhouse, M Ed, EdD, MPH](#)¹, Russ Toal, MPH², DeAnna Keene, MPH³, Laura H. Gunn, PhD⁴, Simone M. Charles, PhD⁵, Cassandra Arroyo, PhD⁶, Stuart Tedders, PhD⁷, William Livingood, PhD⁸, Trang Nguyen, MD, MPH DrPH⁹.

APHA, Denver, CO

November, 2010

(1) Associate Dean and Professor of Community Health, JPHCOPH Georgia Southern University, Cone Hall, PO Box 8015, Statesboro, GA 30460. (2) Clinical Associate Professor, JPHCOPH Georgia Southern University, PO Box 8015, Statesboro, GA 30460. (3) Research Associate, JPHCOPH GSU, PO Box 8015, Statesboro, GA 30460. (4) Jiann-Ping Hsu College of Public Health, Assistant Professor of Biostatistics Georgia Southern University, PO Box 8015, Statesboro, GA 30460. (5) Environmental Health Sciences, Georgia Southern University, P.O.Box 8015, Building 0253, Cone Hall, Herty Drive, Statesboro, GA 30460. (6) Assistant Prof of Epidemiology Jiann Ping Hsu College of Public Health, Georgia Southern University, PO Box. 8015, Statesboro, GA 30460. (7) Jiann-Ping Hsu College of Public Health, Georgia Southern University, P.O. Box 8148, Statesboro, GA 30460. (8) Duval County Health Department & Univ of Florida, 900 University Blvd, Suite 604, Jacksonville, FL 32211. (9) Public Health Asthma Surveillance and Program Evaluation, New York.

lwoodhouse@georgiasouthern.edu

Comprehensive Evaluation of the
*Georgia Childhood Asthma
Management Program*

*Funded by:
Healthcare Georgia Foundation, Inc.
(HCGF)
Atlanta, GA*

This presentation will:

- Document the processes the evaluation team used to support the linking of the systems objectives (such as improved systems of care) to the distal outcomes (ER use and school absenteeism reductions leading to improved improved health status) through more short term or intermediate outcomes such as changes in timely use of appropriate medications or reduction in triggers for asthma.
 - The need to produce a clear link between the program activities, systems changes and outcomes through evaluation evidence is critical when calling for policy change.

HCGF Childhood Asthma Grantees

- **Children's Healthcare of Atlanta Foundation**
provides an integrated approach to managing childhood asthma for children in metropolitan Atlanta
- **Georgia Association for Primary Health Care, Inc.**
improve asthma management among children and adolescents by implementing the Learning Model, Chronic Care Model and Performance Improvement Model in four of Georgia's federally qualified health centers
- **Georgia State University Research Foundation**
continue an asthma management program in the N P Unit V community, with a focus on training and health care navigation for children and their parents/caregivers
- **Lowndes County Board of Health**
to continue a childhood asthma management program through Children's Medical Services
- **St. Galilee Outreach Ministry, Inc.**
to continue to implement the Central Georgia Asthma Education Initiative (CGAEI), a community health education program targeting six counties in the North Central Health District.

First year of the evaluation

- 2009-2010:
- Most grantees worked with our ET to refine their evaluation plans, devise functional mechanisms for data collection, increase client referrals, improve their programmatic infrastructure, solidify and expand partnerships, begin to integrate their programs into electronic registration or record systems, and position themselves for success in the second and third years of their grants.
- The efforts on year one also included assisting grantees with logic model development, understanding what will be required to achieve system changes, assessing the opportunities for accomplishing and sustaining such changes, and on monitoring grantee enrollment and measurement progress.

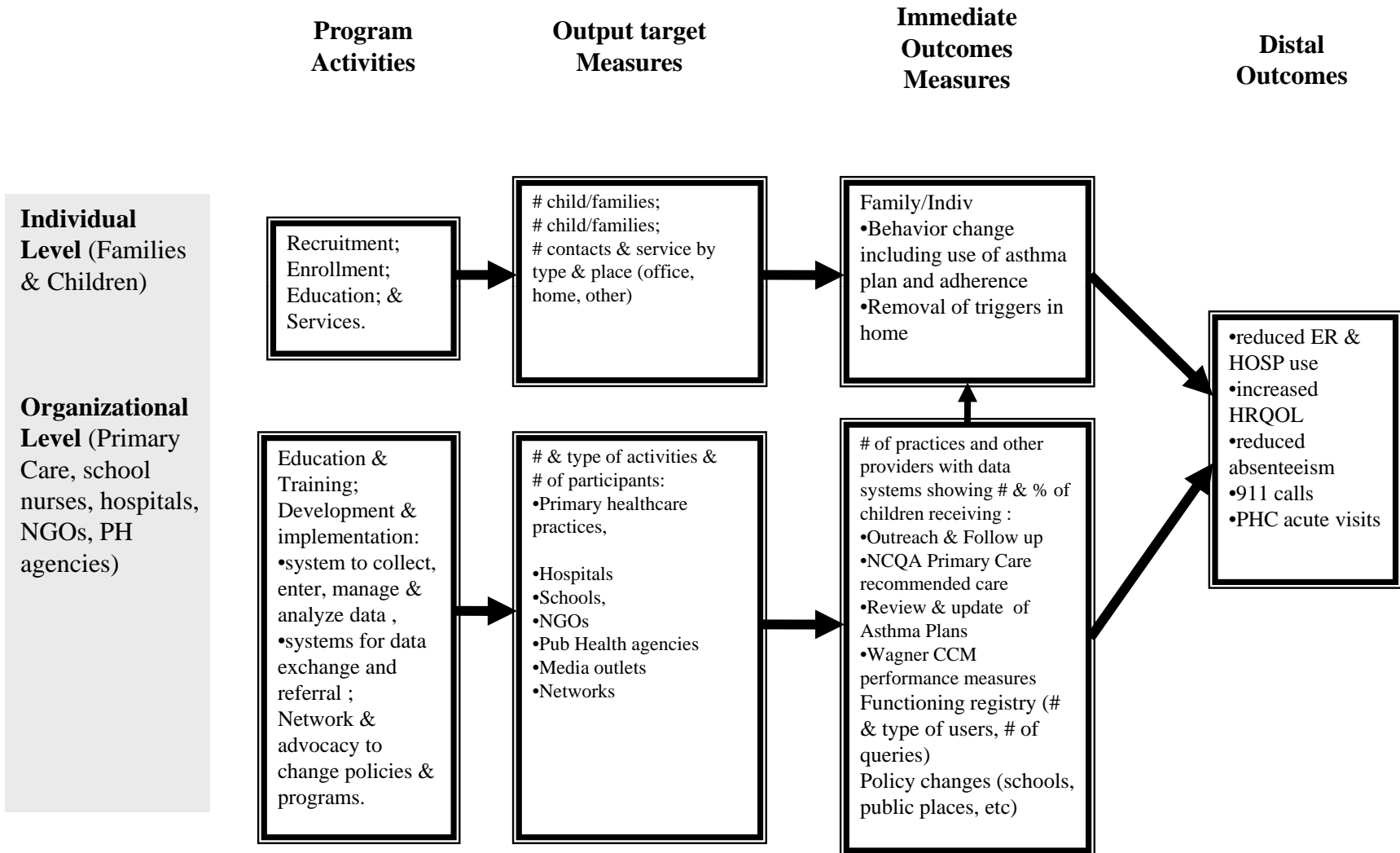
Plan for year 2 emerged from challenges of year 1

- Proposed a coaching/consulting approach to evaluation whereby the ET provides evaluation expertise to assist the Grantees to enhance the identification, collection, management and analysis of data
- This approach will:
 - facilitate and support progress in achieving their program goals with increased emphasis on systems goals.
 - include TA to help grantees refine output and outcome target metrics and help them create basic systems to collect and utilize data.
 - enhance the use of data to support ongoing QI of the programs as the Grantees clarify the relationship of the programs to evidence based practice.

Now evaluators will have an active role in helping the Grantees reorganize the objectives and identify metrics and data systems that enhance the Grantees' capacity to achieve goals for enhancing the systems that support prevention and control of asthma episodes.

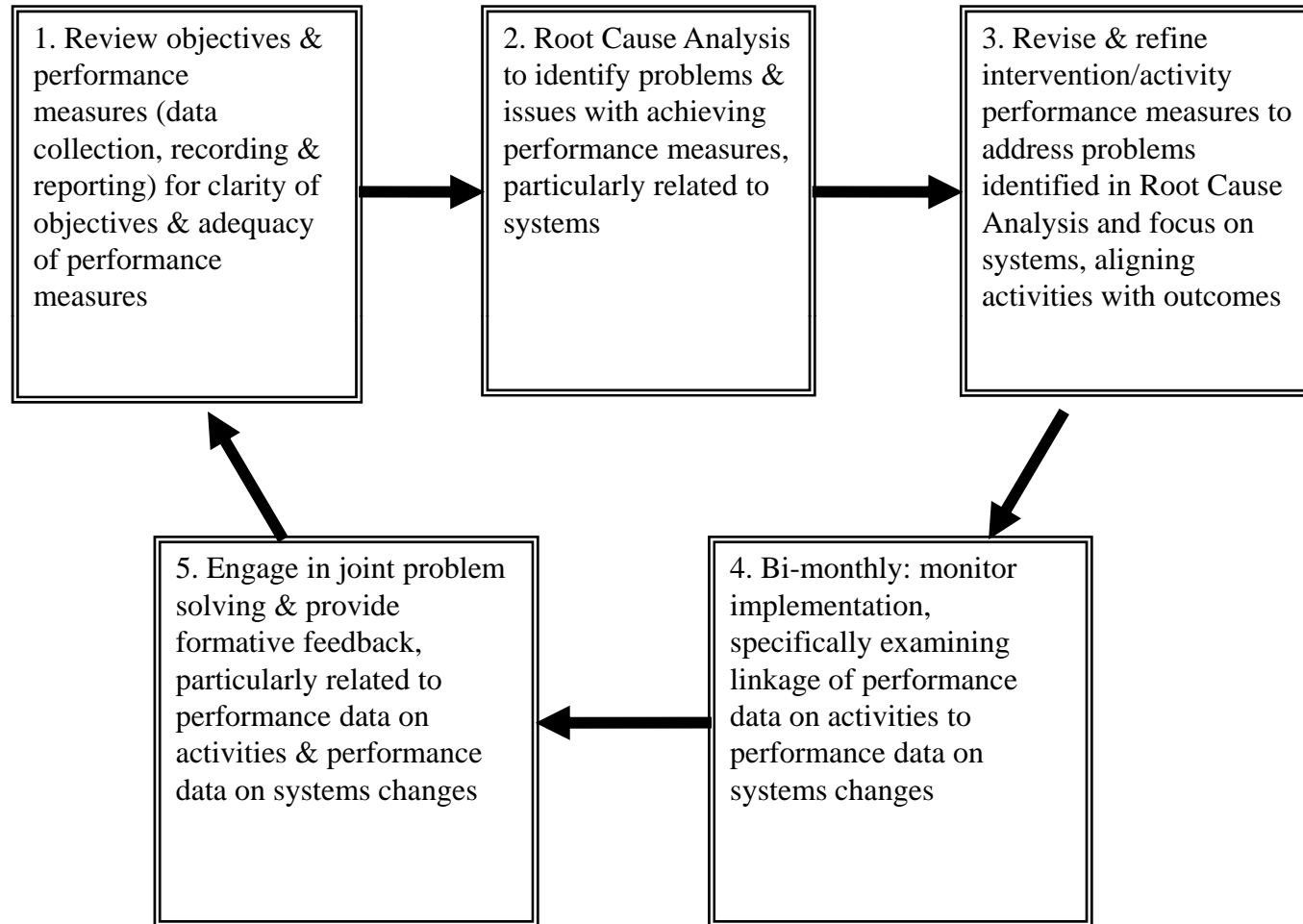
Logic Model Separating System Changes to Target Individual and Organizational Levels

Woodhouse and Livingood, 2010

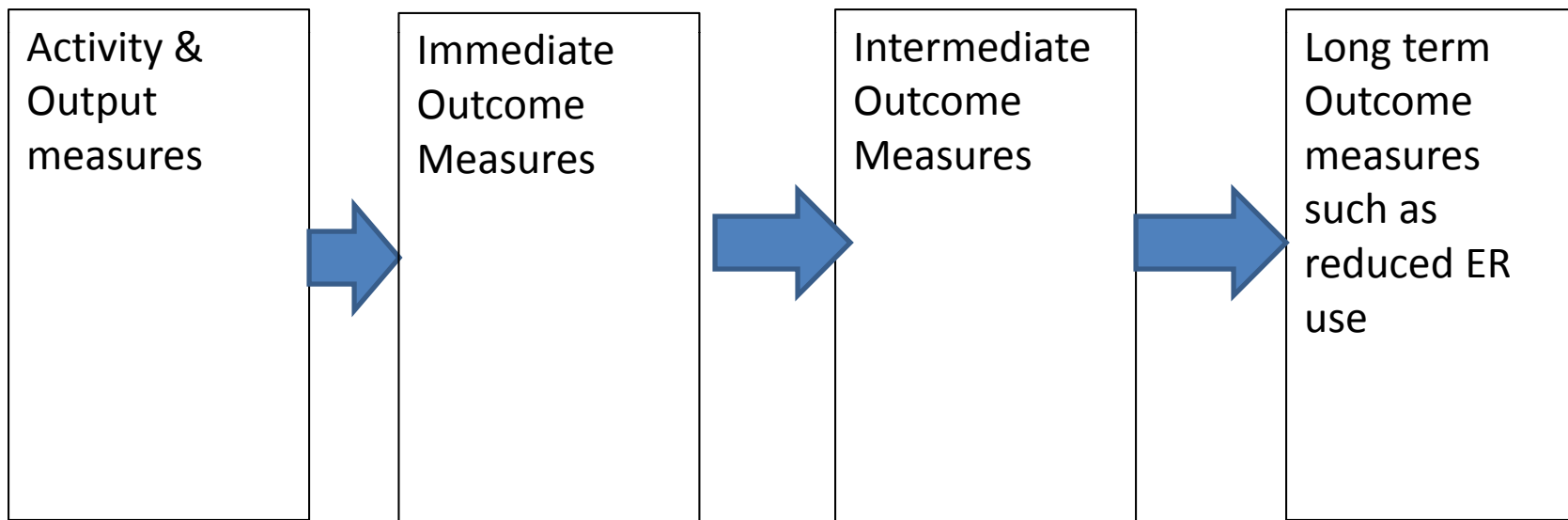


Process Map for Asthma Evaluation Coaching

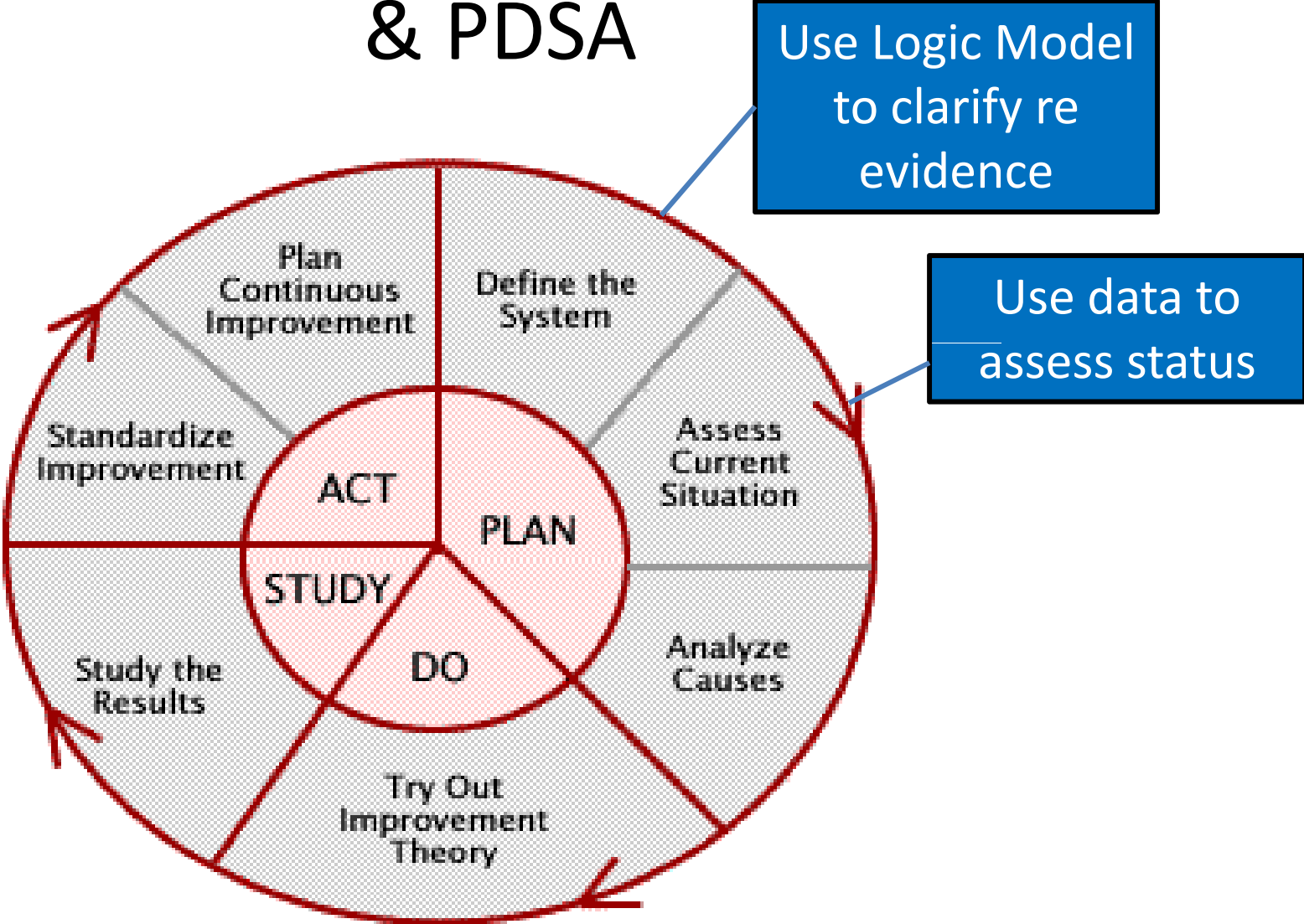
Livingood and Woodhouse, 2010



Training process for linking activity to outcome



Logic Model/Performance Measures & PDSA



Where are we now?