



County Health Rankings

Mobilizing Action Toward Community Health

**County Health Rankings:
Experiences in Media Communication &
Community**

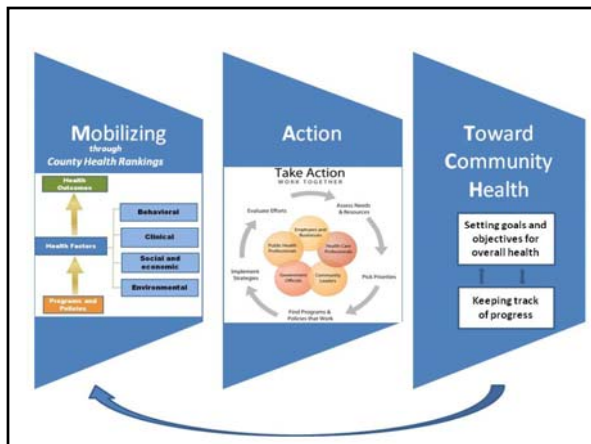
Julie A. Willems Van Dijk RN PhD
American Public Health Association Meeting
November 8, 2010

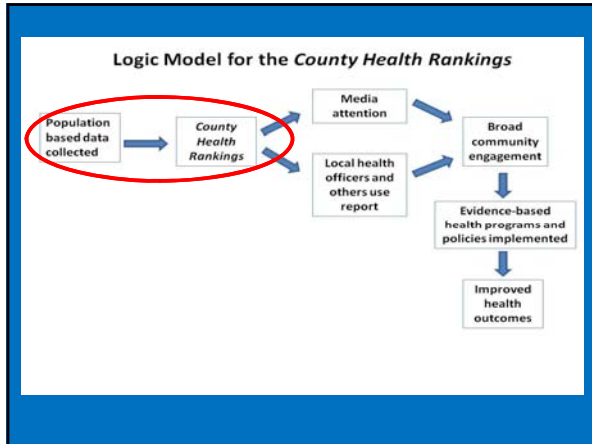


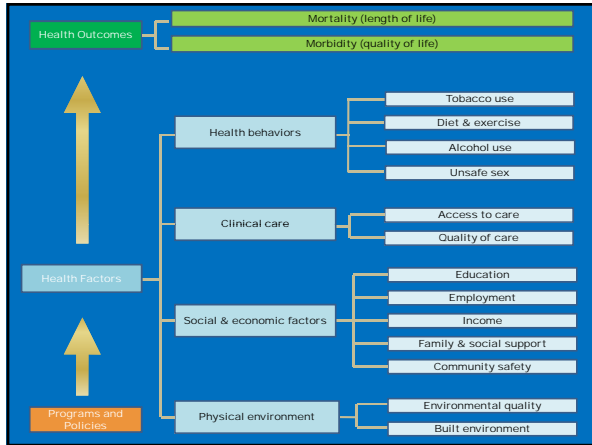
Presenter Disclosure Julie A. Willems Van Dijk

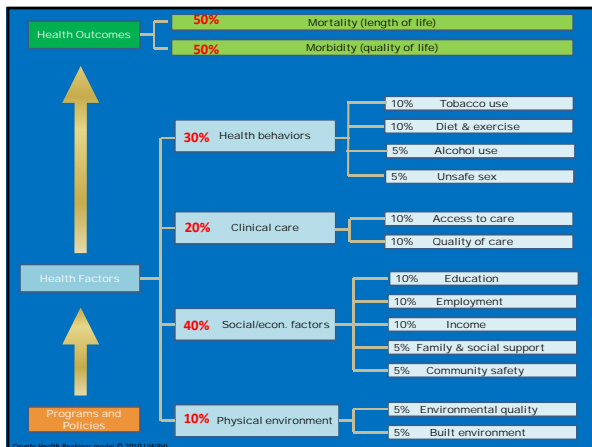
The following personal financial relationships with commercial interests relevant to this presentation existed during the past 12 months:

No relationships to disclose





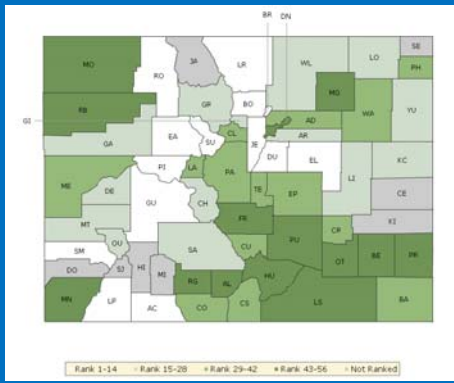




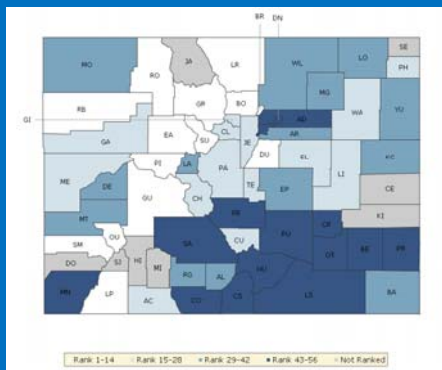
www.countyhealthrankings.org

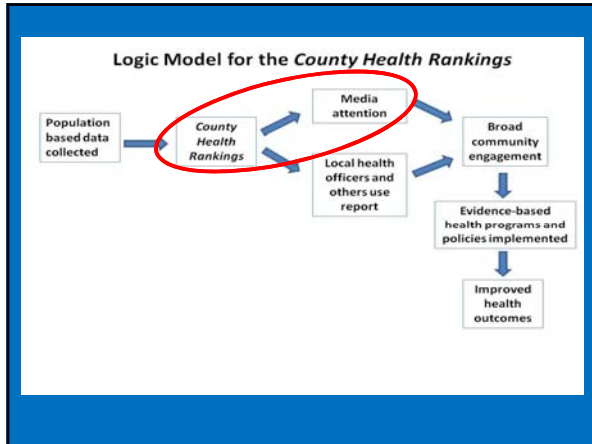


Health Outcomes

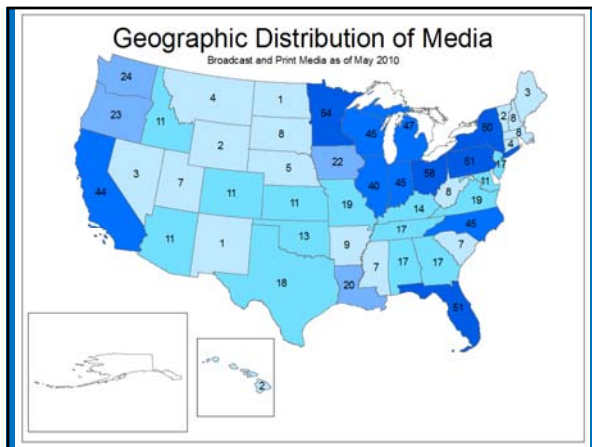


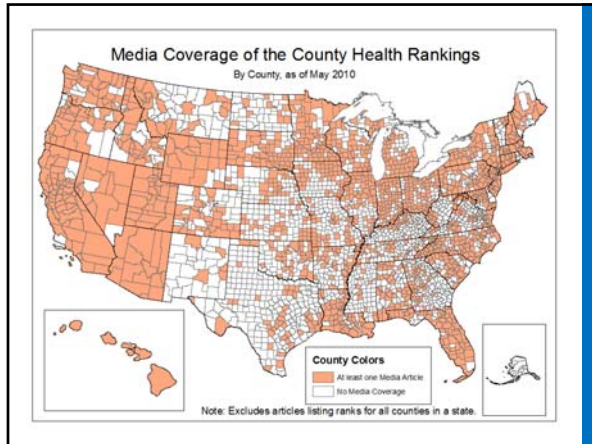
Health Factors











Moving to Action

- Where we live matters to our health.
- There are great disparities in health based on where we live.
- Many factors contribute to health. Health is more than health care.
- Health is everyone's business.
- We all need to work together.



Health data is everyone's business

By Linda Churping
For the Times-News

Published: Wednesday, April 28, 2010 at 4:30 a.m.

Health is not just about medical care. Health is strongly linked to education and income, which makes it everyone's business. To truly understand the health needs of Henderson County, we need access to data.

Two new sources of data, NC-CATCH and MATCH, will help assess our health status and identify public health priorities. These websites can assist individuals, nonprofits, county government and local organizations to quickly retrieve data, educate our community, enhance grant applications or other petitions for funding and complete community health assessments used to determine community needs.

PANTAGRAPH.COM

Healthy ranking still leaves room for improvement

By The Pantagraph Editorial Board | Posted: Wednesday, February 24, 2010 7:00 am

McLean County's ranking of 15th among the healthiest counties in Illinois is worth taking pride in. However, it is more valuable as a call to action to improve areas in which the county is weak.

The bottom line is that McLean County is doing well, but we can — and should — do better.

OrlandoSentinel.com

Good health good for business

By Andrew Webber | Guest columnist

March 29, 2010

Employers, who spend more than \$700 billion each year on health care for their employees, need to take more ownership for improving it. They should follow the lead of the Florida Health Care Coalition, a group that has partnered with organizations such as the American Lung Association of Central Florida to bring asthma-prevention programs to local schools and the Orange County Health Department to improve nutrition.

Editorial: Better health needs a push

A new report on Shelby County should provide the motivation for a vigorous campaign.

It would be easy to sigh, throw up our hands and pronounce the poor health of Shelby County residents a hopeless situation.

The correlation between affluence and healthy lifestyles is obvious, and with a quarter of the Memphis population living in poverty the excuses are not hard to find.

The improvement of our system of parks and recreation is vital in a community where there is an epidemic of child obesity.

Health issues should figure into efforts to fight crime, improve air quality, educate our youth about birth control and sexually transmitted diseases, and address the critical need for mentors.

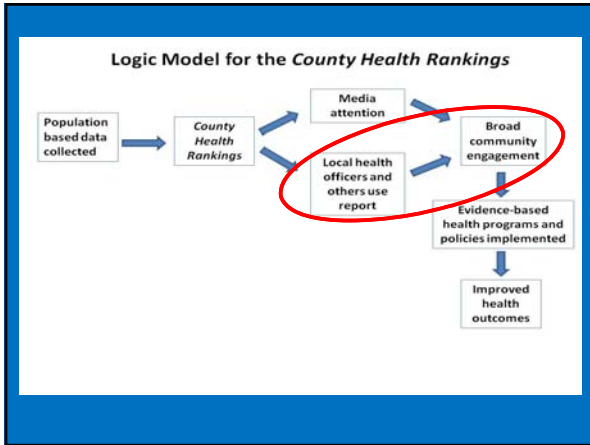
Churches, employers, civic organizations and government entities should all be involved.

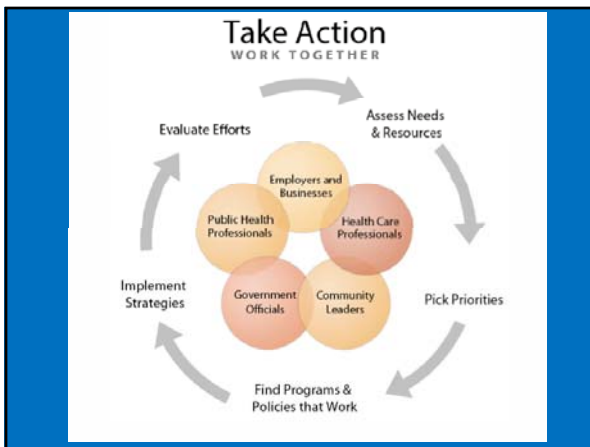
<http://www.commercialappeal.com/news/2010/feb/19>

C'EST BON

We like our gumbo and our rice and gravy, but maybe Lafayette isn't so unhealthy after all. The parish ranked fifth healthiest in the state, according to a new County Health Rankings survey. The survey does not stack Lafayette up against any counties outside Louisiana, so the competition wasn't that stout (Louisiana is 47th in a ranking of the healthiest states), and you could even argue this is akin to being the slimmest person to show up at weight loss camp, but hey, we're never one to turn down any accolades. This calls for cake!

<http://www.theind.com/pooyie/5764-pooyie-022410?>



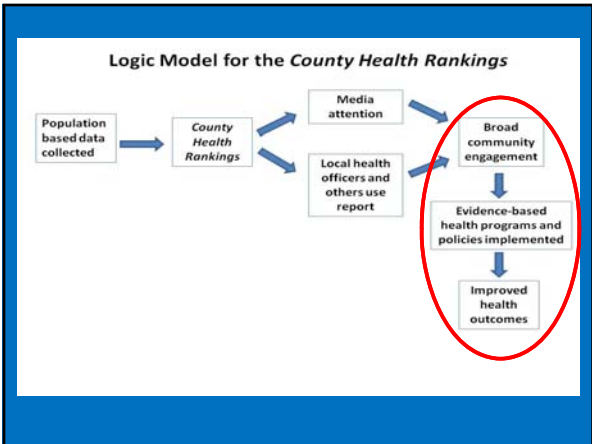


Multi-sector Engagement by Local Health Departments N=842


- 2/3 reached out to community leaders, government officials, and health care professionals
- 1/3 reached out to employers and businesses

Rankings Use LHD Responses

- 68% To guide community health assessment
- 67% To engage local partners from sectors outside of public health
- 54% To communicate with the media
- 44% To take action in response to the Rankings
- 36% To apply for funding
- 35% To communicate with legislators
- 27% To communicate with state government leaders



MICHIGAN



Central Michigan District Health Department
PUBLIC HEALTH SUMMIT
Wednesday, March 10, 2010
Doherty Hotel & Conference Center
604 N. Michigan Street, Clare
9:00 a.m. - 2:00 p.m.

* Presentation will have focus on the County Health Rankings released in February 17th, 2010 to the University of Wisconsin Population Health Institute. The goal of the Summit will be to develop plans to improve the rankings of community health status through the public health profession.
Lunch will be provided.
RSVP to Allison at (989) 773-3822 ext. 8623 or allison@cmhd.org by February 26th.

Rank 1-20 Rank 21-41 Rank 42-62 Rank 63-82 Not Ranked

For More Information

www.countyhealthrankings.org

Julie Willems Van Dijk
University of WI Population Health Institute
Madison, WI
willemsvandi@wisc.edu
608-263-6731
