

Applying the Healthy Development Measurement Tool (HDMT) to Post-Ike Galveston: The utility of mapping social and environmental determinants on post-disaster recovery planning and beyond

John D. Prochaska, DrPH, MPH; Alexandra B. Nolen, PhD, MPH, Meredith C. Masel, PhD, MSW; Vanessa M. Byrd, MA; & Sayali Tarlekar, MPH

Background

Galveston, an island city located along the upper Texas coast, suffered a direct hit from Hurricane Ike in late-2008. About 75% of homes and over 80% of businesses were severely impacted by the storm. While devastating, the storm provided the city with an opportunity to address a number of long existing issues affecting the community, including:

- concentrated poverty
- dilapidated housing
- economic development
- deteriorating infrastructure

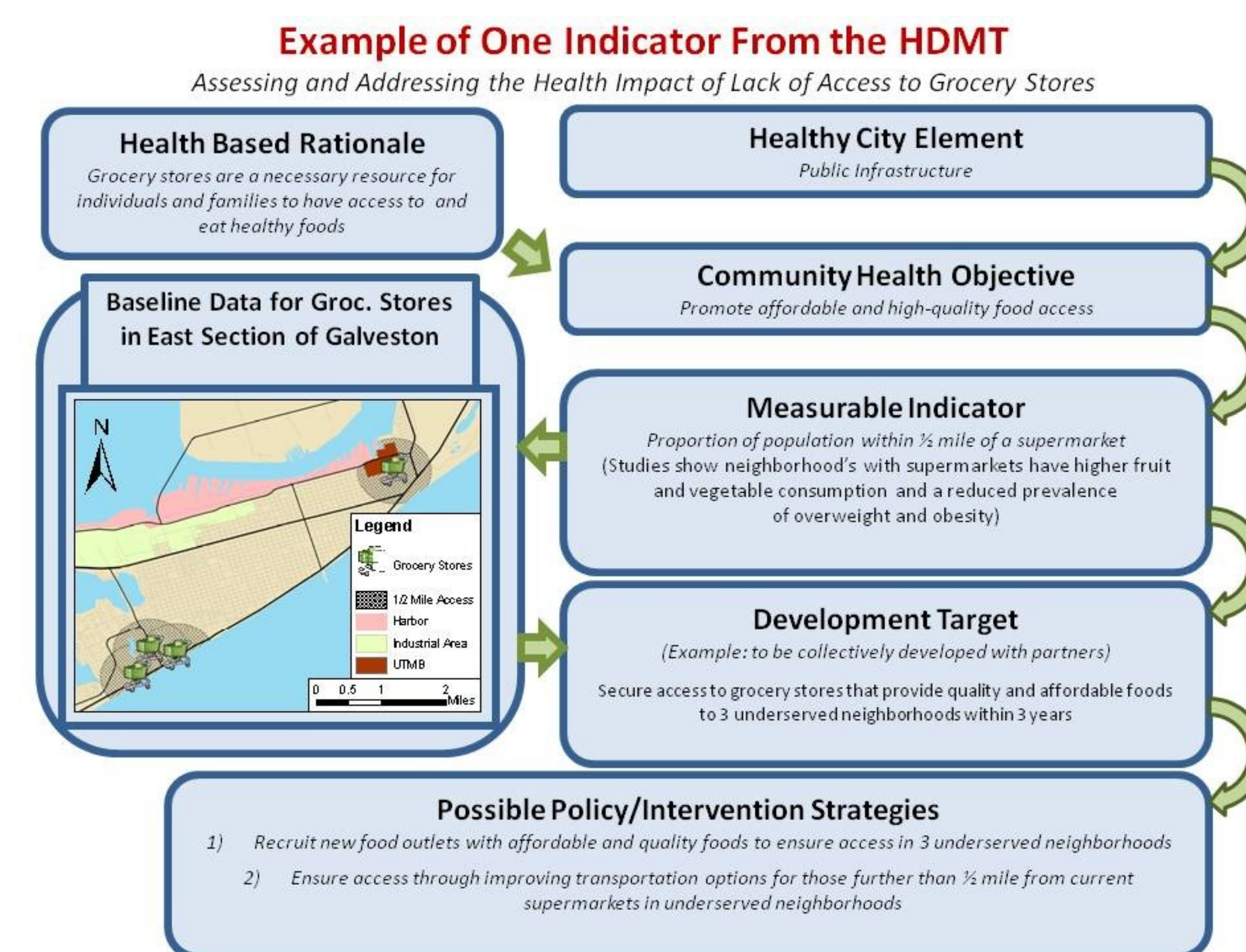
The potential responses to addressing these areas during the redevelopment of the island have varying health impacts. This work aims to inform the potential health impacts of recovery efforts in an attempt to rebuild the city into a healthier and more equitable community following Hurricane Ike.



Process

Our process utilizes the Healthy Development Measurement Tool (HDMT)¹ as a model. The HDMT provides a framework for health impact assessments on a range of topics grouped into six elements: environmental stewardship, sustainable and safe transportation, social cohesion, public infrastructure / access to goods and services, adequate and healthy housing, and a healthy economy. See figure 1.

Figure 1: Example of how the HDMT process works for addressing access to healthy and affordable foods.



Work to Date

- Modifying existing and identifying additional HDMT indicators for appropriate application to the Galveston community
- Collecting data on indicators related to housing, access to health care, transportation, access to healthy foods, land-use and zoning, pre-storm demographics, and many others
- Working with local government to integrate indicators into long-term planning efforts, including the municipal comprehensive plan and re-zoning efforts
- Developing partnership with local housing authority to address the redevelopment of public and low-income housing and reduction of poverty

Key Partners

- ❖ City of Galveston
 - Department of Planning and Community Development
 - Long-term Recovery Committee
 - Comprehensive Plan Steering Committee
 - Master Neighborhood Planning Committee
 - Families, Children, and Youth Board
- ❖ Galveston Economic Development Partnership
- ❖ Galveston Housing Authority

Next Steps

Continue working with city officials, service providers, and local residents to identify priority issues and develop potential solutions that would improve health impact

Provide training and technical support for bringing health into all policy decision making processes locally

Expand process into similar communities along the Texas Gulf Coast

References, Contact Information & Acknowledgements

1 - The Healthy Development Measurement Tool (HDMT) was developed by the San Francisco Department of Public Health.

For more information, please visit: <http://www.thehdmt.org>

For more information, please contact John Prochaska at joprocha@utmb.edu, (979) 574-6111. All authors are with the University of Texas Medical Branch Center to Eliminate Health Disparities, Galveston, Texas, a member of the Gulf Coast SECURE Center. Please visit: <http://www.utmb.edu/CEHD>

This work was funded in part by NIH's National Center on Minority Health and Health Disparities, and by the Catholic Campaign for Human Development.