



Susquehanna County Adolescent Services Assessment

By Gale Spencer, Ralph Klotzbaugh, Fran Srnka-Debnar, & Maureen Daws

Binghamton University
Decker School of Nursing




During the past 12 months we have not had a financial, professional, or personal relationship that might potentially bias and/or impact contents of the educational session



Presenter Disclosure


Gale Spencer, Ralph Klotzbaugh, Frances Srnka-Debnar & Maureen Daws

The following personal financial relationships with commercial interests relevant to this presentation existed during the past 12 months:
No relationships to disclose




History

- ❖ Integrated Children's Services Planning (ICSP) - statewide initiative in PA to improve services and programs for youth and families
- ❖ Emphasis on multiple services or "systems" (i.e. child welfare, juvenile probation, mental health, substance abuse programs, etc.).
- ❖ Identify
 - gaps in services
 - service issues/complications
- ❖ Decker School of Nursing Research Team invited to partner with ICSP team to survey youth clients and their parents (guardians).




Purpose of the Study

- ❖ To evaluate the mental health services that youth clients and their families are currently receiving in Susquehanna County.




Methodology of the Study

- ❖ Questionnaires identified from the literature were tailored to meet the approval of the ICSP members.
- ❖ Both youth and family questionnaires and consent letters were delivered by Penn State Cooperative Extension to each of the participating agencies. Envelopes were attached to the questionnaires to ensure confidentiality.
- ❖ Each agency's name was stamped on the questionnaires.
- ❖ A sealed box was placed in each agency for completed questionnaires.



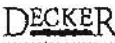
Methodology (cont.)

- ❖ Agency personnel offered a questionnaire to each client and their family member at their appointment.
- ❖ The parent or guardian gave consent for their dependent to participate in the evaluation, and the dependent agreed to participate.
- ❖ Data was collected over 2 months. Completed questionnaires were mailed to Binghamton University.
- ❖ Each respondent's data was entered into the appropriate database.
- ❖ All data was analyzed as grouped data using SPSS 18.



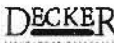
Demographics of the Sample

- ❖ **Sample**
 - Youth = 105
 - Parent or guardian = 104
- ❖ **Age**
 - Youth ranging from 12 - 19 years, x = 16 years
 - Parent or guardian ranging from 25 - 72 years, x = 44 years
- ❖ **Gender**
 - Youth - 58 % were male and 42% were female
 - Parent/guardian- 75% were male and 25% were female




Demographics of the Sample

<ul style="list-style-type: none"> ❖ Race - Youth <ul style="list-style-type: none"> - American Indian/Alaskan Native = 8.9% - White/Caucasian = 84.2% - Black (African American) = 3% - Other = 4% ❖ Ethnicity (report by youth on parent) - Hispanic/Latino <ul style="list-style-type: none"> - Yes = 5% - No = 95% 	<ul style="list-style-type: none"> ❖ Race - Parent/Guardian <ul style="list-style-type: none"> - American Indian/Alaskan Native = 1% - White/Caucasian = 97% - Black (African American) = 2% ❖ Ethnicity (report by parent on youth) - Hispanic/Latino <ul style="list-style-type: none"> - Yes = 3% - No = 97%
--	--




Demographics of the Sample

<p>Health Insurance/Medicaid Coverage</p> <ul style="list-style-type: none"> ❖ Youth - Medicaid <ul style="list-style-type: none"> - Yes = 50% - No = 13.7% - Don't Know = 36.3% 	<p>Health Insurance Coverage</p> <ul style="list-style-type: none"> ❖ Parents/Guardians - Health Insurance <ul style="list-style-type: none"> - Medicare/SSI = 14.9% - Medicaid = 52.9% - Private = 29.7% - Self-Pay = 2.3%
---	---



Parent/Guardian Relationship with Youth Receiving Service

- ❖ **Relationship**
 - Biological parent = 82%
 - Adoptive parent = 5%
 - Step-parent = 1%
 - Foster-parent/care provider = 4%
 - Grandparent = 7%
 - Other relative = 1%
- ❖ **Legal Guardian Status**
 - Yes = 90%
 - No = 10%



Youth Living Situation (in last 6 months)

- ❖ With one or both parents = 67.6%
- ❖ With another family member = 21.9%
- ❖ Foster home = 14.3%
- ❖ Therapeutic foster home = 1%
- ❖ Crisis shelter = 1%
- ❖ Group home = 4.8%
- ❖ Residential treatment center = 6.7%
- ❖ Hospital = 2.9%
- ❖ Local Jail = 2.9%



Youth Moving

In past 3 years as reported by parent/guardian

- ❖ Moved from one house to another = 75%
- ❖ Moved from parent's home to foster care = 8.3%
- ❖ Moved to a residential treatment setting = 16.7%



School Absence

How many times was I absent

- ❖ 1 day or less = 34%
- ❖ 2 days = 16.5%
- ❖ 3-5 days = 16.5%
- ❖ 6-10 days = 5.8%
- ❖ Over 10 days = 4.9%
- ❖ N/A - not in school = 5.8%
- ❖ Do not remember = 16.5%

How many times was my youth absent

- ❖ 1 day or less = 61.2%
- ❖ 2 days = 14.3%
- ❖ 3-5 days = 10.2%
- ❖ 6-10 days = 4.1%
- ❖ Over 10 days = 6.1%
- ❖ N/A - not in school = 2%
- ❖ Do not remember = 2%



Were Services Voluntary

Youth Services

- ❖ Services
 - Voluntary = 60%
 - Involuntary = 8%
 - Mandated = 32%

❖ Length of Service

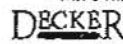
- Less than 1 month = 5.7%
- 1-2 months = 7.6%
- 3-5 months = 17.1%
- 6 mos. - 1 yr. = 28.6%
- More than 1 yr. = 37.1%

Parent/Guardian

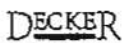
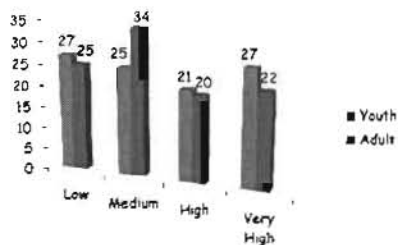
- ❖ Services
 - Voluntary = 73.8%
 - Involuntary = 4.8%
 - Mandated = 21.4%

❖ Length of Service

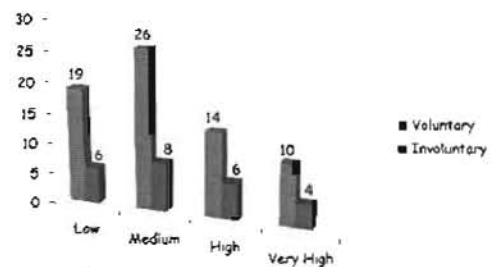
- Less than 1 month = 1.9%
- 1-2 months = 4.8%
- 3-5 months = 13.5%
- 6 mos. - 1 yr. = 25%
- More than 1 yr. = 50%

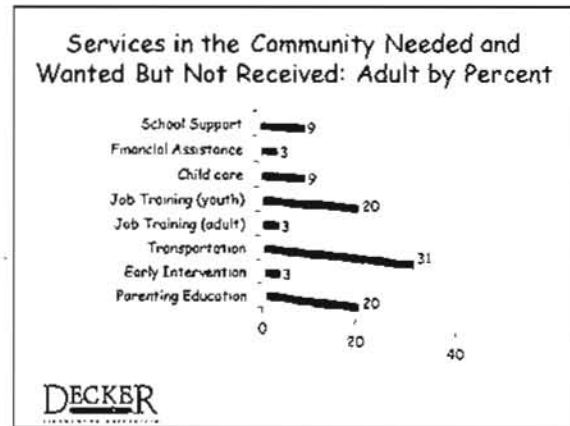
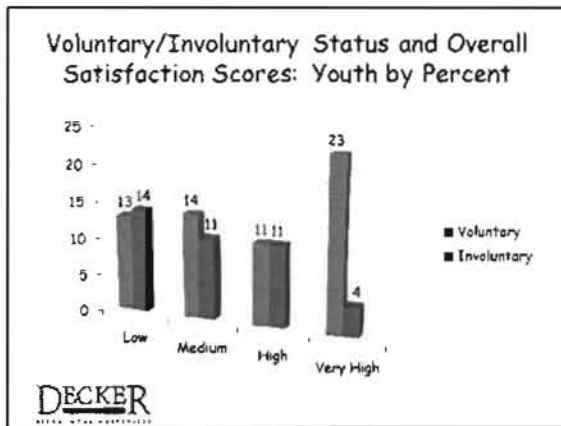


Overall Satisfaction Scores by Percent



Voluntary/Involuntary Status and Overall Satisfaction Scores: Adult by Percent





Summary

- No statistical significance was found in the youth and parent/guardian satisfaction scores.
- No statistical significance was found by youth voluntary or involuntary status on their satisfaction scores.
- No statistical significance was found by youth voluntary or involuntary status on parental/guardian satisfaction scores.
- The services needed and wanted but not received in this community were:
 - Job training youth
 - Parent education
 - Transportation

DECKER

Limitations of the Study

- Limitations related to sample size.
 - adults = 104
 - Youth = 105
- Collection methods
 - youth survey was not matched to correspond with caregivers survey to identify differences and similarities
- Agency had specific objectives related to performance rather than interest in investigating areas of service enhancement

DECKER

Future for the study

- The use of focus groups would:
 - assist in clarifying some of the conflicting responses within the surveys
 - may elicit responses related to adolescent mental health in Susquehanna County
- The future of the study is dependent upon:
 - the willingness of all associated agencies to participate in a more in-depth study
 - And funding to support the continuation of the study

DECKER