

Using online mapping tools for strategic health planning and policy making for the health care safety net



Federally Funded Community Health Centers

- ▶ The Health Resources and Services Administration's Bureau of Primary Health Care provides grants to not-for-profit and public entities to provide health care to the medically underserved
- ▶ Program roots in the Migrant Health Act of 1962 and the Economic Opportunity Act of 1964
- ▶ Stats
 - ▶ More than 1100 grantees operate more than 7900 sites in every state and territory serving more than 19 million patients in 2010
 - ▶ Approximately 93% of health center patients nationally are low-income, 37.5% are uninsured and 38.5% are Medicaid recipients

HealthLandscape



Uniform Data System

- ▶ Every calendar year, each health center grantee enters data into the Uniform Data System
 - ▶ Patient counts by age, gender, race, ethnicity, income level, insurance source, special populations
 - ▶ Staffing information
 - ▶ Data on diagnoses and services provided
 - ▶ Costs and revenue
- ▶ In 2005, health center grantees began reporting patients by ZIP Code

HealthLandscape



Geography of Health Centers' Service Areas

- ▶ Prior to having patient by ZIP Code data, BPHC relied on two geographies:
 - ▶ Medically Underserved Areas
 - ▶ Federally designated areas- rarely redesignated to determine if need still exists there
 - ▶ Health Centers must serve the populations from MUAs
 - ▶ Health Center claimed service areas
 - ▶ Health Centers must declare their service areas- from census tracts to counties
 - ▶ Many claim a larger service area than they currently serve based on outlier use of the health center

HealthLandscape



UDS Mapper

- ▶ Development began in 2009 for limited users
- ▶ Intent was to let BPHC project officers look at potential service area overlap
- ▶ Half-way into development, intent changed to open to public and timeline dramatically shortened
- ▶ Currently used by almost 4000 unique users from health centers, supporting organizations, communities seeking funding, state and local government and BPHC/ HRSA

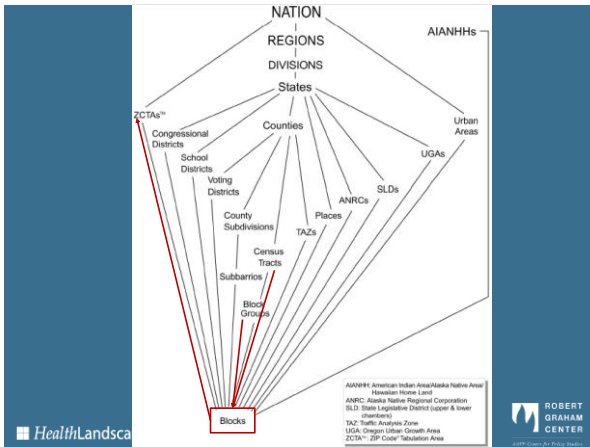
HealthLandscape



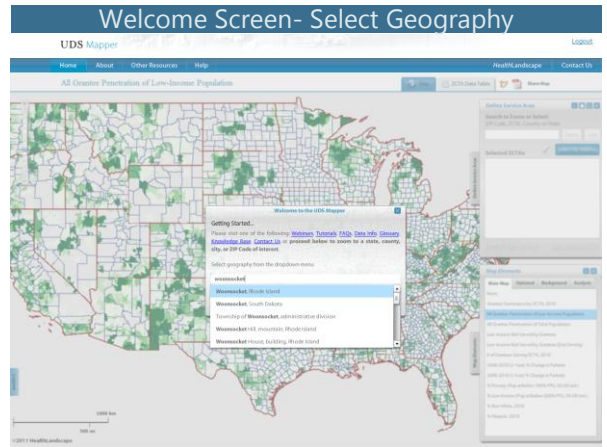
Data in the UDS Mapper

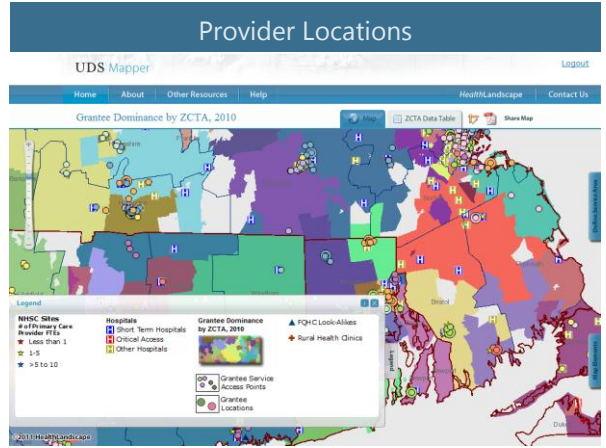
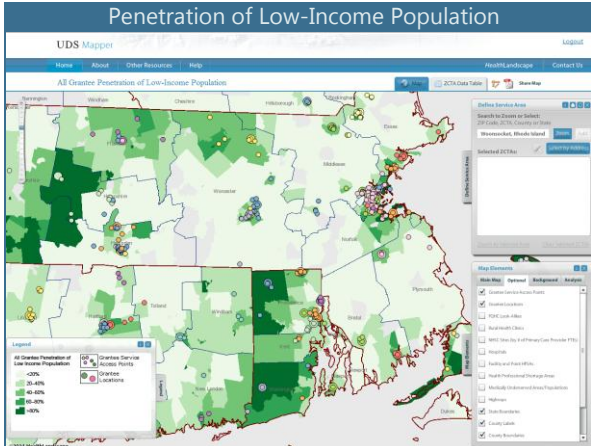
- ▶ 2010 (calendar year) patient data from Section 330 Health Center grantees
 - ▶ Report patients by ZIP Code
- ▶ Demographic estimates based on
 - ▶ 2010 Census counts to the block level
 - ▶ Population count, race, ethnicity
 - ▶ 2005-2009 ACS data to the block group and census tract
 - ▶ Poverty, low-income rates
- ▶ Full explanation of methodology can be found in the help section of the UDS Mapper site

HealthLandscape



HealthLandscape





Rollovers

Grantee Rollover

Thundermist Health Center
Community Health Center: Yes
Migrant Health Center: No
Health Care for the Homeless: Yes
Public Housing: No

Rural Health Clinic Rollover

PAGE SHENANDOAH HEALTH CENTER
Address: 516 1st St # B
City: Shenandoah
State: VA
ZIP Code: 22849-1602

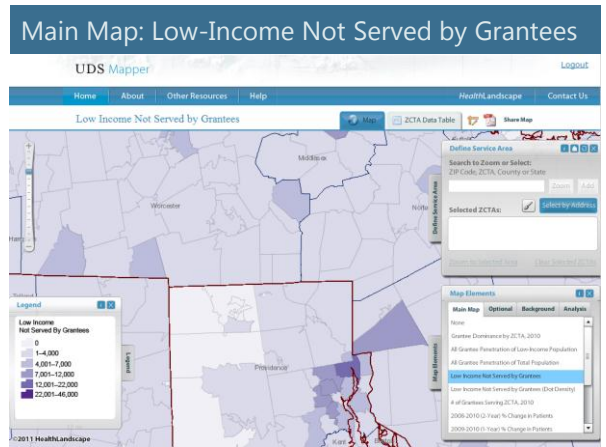
Service Access Point Rollover

THE MOLAR EXPRESS - DENTAL VAN
Grantee Name: Thundermist Health Center
Address: 450 Clinton St
City: Woonsocket
Hours Per Week: 48
Operation: Part-Time
Schedule: Year-Round

FQHC-LA Rollover

Max Robinson Center
Address: 2301 Martin Luther King Jr Ave SE
City: Washington
State: DC
ZIP Code: 20020-5813

ROBERT GRAM CENTER
A HealthLandscape Company



Main Map: Low-Income Not Served (Dot Density)

UDS Mapper

Home About Other Resources Help HealthLandscape Contact Us

Low Income Not Served by Grantees (Dot Density)

Search to Zoom or Select:
ZIP Code, ZCTA, County or State

Selected ZCTAs: Select by Address

Map Elements
Main Map | Optional | Background | Analysis

Legend
Low Income Not Served by Grantees (Dot Density)
1 dot = 100 people

ZCTA Data Table View

UDS Mapper

Home About Other Resources Help HealthLandscape Contact Us

ZCTA Data Table View

Export or share maps, data

ZCTA	Service Area	Total Population	Penetration of Total Pop	Uninsured by 2010	Low Income Pop 2010	Penetration of Low Income	Uninsured by 2010	06-10 Patient Grantees	06-10 Patient Change (M)	% Change	09-10 Patient	% Pop. in Poverty 2010	% Low-Income Pop. 2010	% Non-White 2010	% Hispanic 2010
00000		89,519	15.90%	75,280	22,206	64.12%	7,967	1,666	13.43%	4.52%	12.27%	25.41%	13.66%	6.71%	

Analysis Results

Label	Value	Description
Service Area Total Population	89,519	Total (census) population for defined Target Area zip
Current FQHC Placement	14,239	Number of defined target area covered by patients of any FQHC grantee in 2010
Current FQHC Penetration Rate - Total Pop.	15.90%	Percent of total target area population using an FQHC in 2010
Current Total Pop. Uninsured by FQHC Prog.	75,280	Count of target area residents not using an FQHC in 2010
Total Pop Target for proposed site	2,500	Total New Patients to be served by proposed site
% FQHC Uninsured Total Pop Targeted	3.32%	Percent of Target Area residents not currently using an FQHC that will be users of FIP

Existing Provider Summary

Count of Federally Linked Non-FQHC Sites in Target Area	Count of Non-FQHC LASHLs
Count of Stand-Alone NHSC Placement Sites in Target Area	Count of non-FQHC NHSC Placement sites
Count of current FQHC grantee sites in Target Area	Count of existing FQHC grantee service delivery sites

*Note: Low Income penetration and need assumes all current users to be low income - watch the grantees currently serving large population > 200% of poverty

Select by Address

UDS Mapper

Home About Other Resources Help HealthLandscape Contact Us

Select by Address

Address: 595 Smithfield Rd, North Smithfield, RI 02896-7226

Selected ZCTAs: Select by Address

Threshold Sliders - Poverty

UDS Mapper

Home About Other Resources Help HealthLandscape Contact Us

Threshold Sliders - Poverty

Map Elements
Main Map | Optional | Background | Analysis

Map Elements
You can use the use arrows to change value

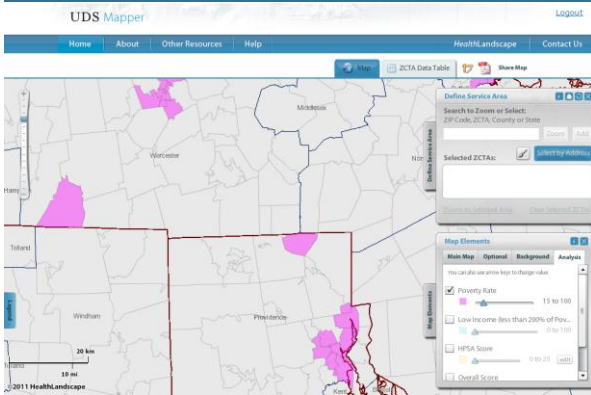
Poverty Rate 0 to 100

Low Income less than 200% of Pov... 0 to 100

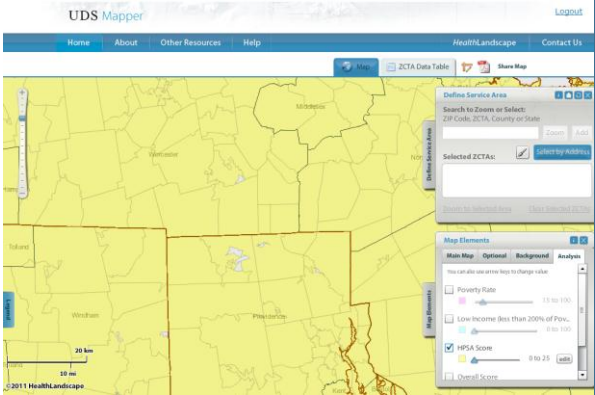
HPSA Score 0 to 25 (edit)

Overall Score

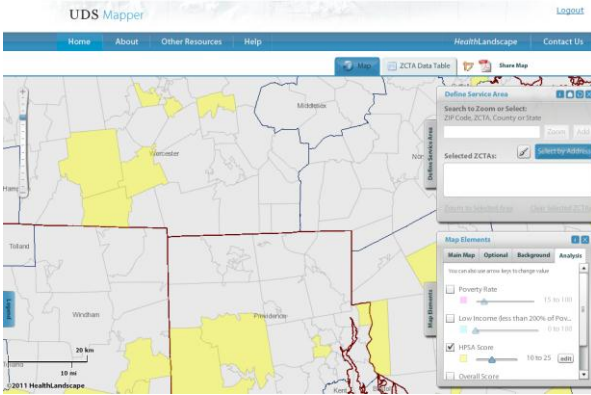
Threshold Sliders- 15% Poverty



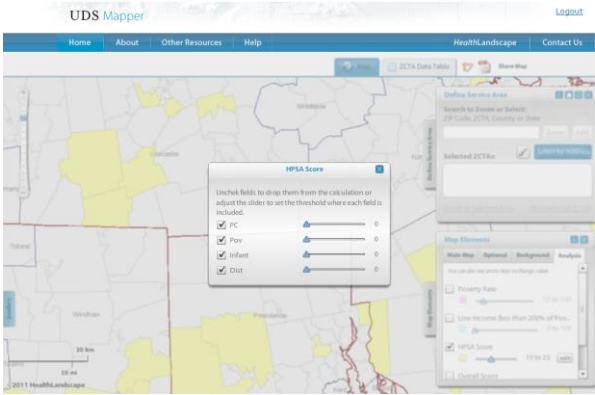
Threshold Sliders- HPSA Score



Threshold Sliders- 10 HPSA Score



Threshold Sliders: Composite Indices



Help Available Throughout the Site

The screenshot shows the UDS Mapper website interface. On the left, a 'Welcome' message explains the site's purpose: to help inform users about the geographic extent of US Federally Qualified Health Centers (FQHCs). It mentions the 'Uniform Data System (UDS)' and provides a link to 'Help' and 'About'. Below this is a search bar for ZIP codes or states. On the right, the 'UDS Mapper' search page is visible, featuring a map and a search box. A 'Help' link is highlighted in the top navigation bar. The footer includes the Robert Graham Center logo and the text 'AAFP Center for Public Health'.

Future of the UDS Mapper

- ▶ Actual health center service areas
- ▶ Network analysis
- ▶ In-depth analysis for specific regions
 - ▶ Combining local data with data in the Mapper
- ▶ Additional trainings and help features
- ▶ Possible integration into *HealthLandscape*
- ▶ You tell us...

The bottom of the slide features two logos: 'HealthLandscape' on the left and the 'ROBERT GRAHAM CENTER' logo on the right, which includes the text 'AAFP Center for Public Health'.

Questions?

<http://www.udsmapper.org/contact-us.cfm>

The screenshot shows the navigation bar of the HealthLandscape website. The 'Contact Us' link is circled in red. Other visible links include 'Home', 'About', 'Knowledge Base', and 'My Profile'. The Robert Graham Center logo is visible in the bottom right corner of the slide.

Sean Finnegan
sfinnegan@aafp.org

HealthLandscape

ROBERT GRAHAM CENTER
AAFP Center for Public Health