



Previous Breastfeeding Experience and Breastfeeding Duration among Multiparous Hong Kong Mothers

Marie Tarrant¹, RN MPH PhD; Dorothy Li Bai¹, MBBS; Kendra M. Wu, BSc MSc MMedSc² Daniel Y. T. Fong¹ PhD & Joan E. Dodgson RN MPH PhD³
¹University of Hong Kong, School of Nursing, ²University of Hong Kong, School of Public Health, ³Arizona State University, College of Nursing

Background

- While previous breastfeeding experience is often identified as a factor influencing the duration of breastfeeding in subsequent children, few studies have specifically examined the duration of previous breastfeeding in samples of only multiparous mothers.

Method

- 511 multiparous, mother-infant pairs were recruited from four public hospital obstetric units in and followed prospectively for 12 months or until weaned.
- Study outcomes were duration of any and exclusive breastfeeding and predictor was duration of previous breastfeeding.
- Participants categorized into three groups: no previous breastfeeding, breastfed for ≤12 weeks, and breastfed for >12 weeks.
- Cox regression used to assess impact of previous BF duration on current duration of any BF and EBF.

Results

- 17% (n=87) had not previously breastfed, 43.3% (n=221) had breastfed for ≤12 weeks, and 39.7% (n=203) had breastfed for >12 weeks (Table 1).
- Participants with little or no previous breastfeeding experience were more likely to breastfeed and exclusively breastfeed for shorter durations (Figs 1 & 2).
- After adjustment, having no previous breastfeeding experience or having previously breastfed for ≤12 weeks were both significantly associated with a higher risk of early weaning (Table 2).

Discussion and Conclusion

- Multiparous mothers who plan to breastfeed but who have not had previous breastfeeding experience or who have had previously unsuccessful breastfeeding experiences should receive additional pre- and post-natal breastfeeding support.

Results

Table 1. Unadjusted HRs for duration of breastfeeding by mother-infant characteristics and previous breastfeeding duration

Characteristic	Total N=511 N (%)	Duration of any BF		Duration of EBF	
		HR	(95% CI)	HR	(95% CI)
Age of mother (years)					
18–24	11 (2.15)	1.48	0.75 – 2.90	1.57	0.85 – 2.90
25–29	88 (17.22)	0.98	0.73 – 1.31	0.74	0.55 – 1.01
30–34	238 (46.58)	1.14	0.91 – 1.42	0.93	0.75 – 1.16
≥35	174 (34.05)	1		1	
Maternal education					
Compulsory secondary ^a	149 (29.16)	0.94	0.73 – 1.21	0.88	0.68 – 1.13
Upper secondary	189 (36.99)	1.17	0.93 – 1.47	1.13	0.90 – 1.43
University degree or above	173 (33.86)	1		1	
Monthly family income (HKD)^b					
<\$15,000	161 (31.51)	0.81	0.64 – 1.03	0.71	0.56 – 0.90
\$15,000–\$29,999	134 (26.22)	1.16	0.91 – 1.48	1.03	0.81 – 1.31
≥\$30,000	216 (42.27)	1		1	
Planning to EBF					
No	147 (28.77)	1		1	
Yes	364 (71.23)	0.48	0.39 – 0.60	0.43	0.35 – 0.53
Returning to work postpartum					
No	206 (40.31)	1		1	
Yes	305 (59.69)	1.68	1.37 – 2.07	1.79	1.45 – 2.22
Previous BF experience					
None	87 (17.03)	3.15	2.36 – 4.21	3.23	2.41 – 4.33
≤12 weeks	221 (43.25)	3.05	2.42 – 3.84	2.99	2.36 – 3.79
>12 weeks	203 (39.73)	1		1	

^a Compulsory secondary education is to Form 3 or Grade 9 ^b 1 USD = 7.78 HKD

Table 2. Adjusted HRs for duration of breastfeeding by mother-infant characteristics and previous breastfeeding duration

Characteristic	Duration of any BF		Duration of EBF	
	HR	(95% CI)	HR	(95% CI)
Planning to EBF				
No	1		1	
Yes	0.57	0.46 – 0.71	0.51	0.41 – 0.63
Returning to work				
No	1		1	
Yes	1.54	1.20 – 1.96	1.44	1.12 – 1.85
Previous BF experience				
None	3.11	2.31 – 4.18	3.08	2.27 – 4.19
≤12 weeks	2.54	1.99 – 3.24	2.34	1.82 – 3.00
>12 weeks	1		1	

Results

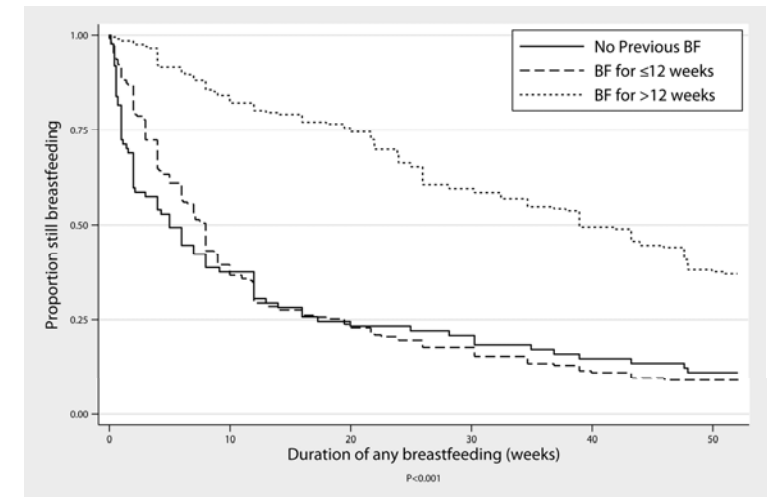


Figure 1. Kaplan-Meier survival estimates of the duration of any breastfeeding by previous breastfeeding experience

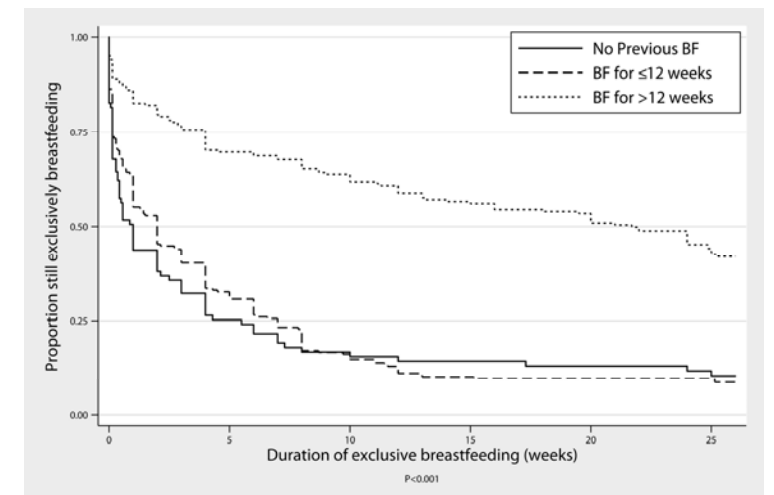


Figure 2. Kaplan-Meier survival estimates of the duration of exclusive breastfeeding by previous breastfeeding experience

Acknowledgement

- Funding was provided by Health and Health Services Research Fund, Government of the Hong Kong SAR (Grant: #05060721), the University of Hong Kong (Grant: #10207306), the University of Hong Kong Strategic Research Theme of Public Health, and the School of Nursing, University of Hong Kong.