

Students are Healthy, Well and Ready to Learn in Palm Beach County Schools



Ronald J. Wiewora, MD, MPH
 Anne Hedges, MSN, RN, NCSN
 Ginny Keller, RN, MBA, NCSN
 10/29/12

Presenter Disclosures

Ronald J. Wiewora, MD, MPH, FACP, FACPM

(1) The following personal financial relationships with commercial interests relevant to this presentation existed during the past 12 months:

No relationships to disclose.

Program Information School Nurse Program in Palm Beach County

- The School District of Palm Beach County enrollment for 2012-2013 is 174,866 students
- The role of the School Nurse is to support the academic achievement of students by managing the health and wellness of students
- Since 1997 at least one School Nurse has been assigned to each regular public school in the county
- Three partners: School District, Health Care District and the Department of Health



Background Information

- Palm Beach County School District is the 11th largest school district in the US, the 5th largest in Florida
- The National Association of School Nurses recommends a ratio of 1:750, nurse to students
- The HCD program has a ratio of 1:779
- Some services are provided in alternative schools



National Association of School Nurses Nursing Practice Statement (2010)

- School nursing is a specialized practice of professional nursing that advances the wellbeing, academic success, and lifelong achievement of students.
- To that end, school nurses facilitate normal development and positive student response to interventions; promote health and safety including a healthy environment; intervene with actual and potential health problems; provide case management services; and actively collaborate with others to build student and family capacity for adaptation, self-management, self advocacy, and learning



Palm Beach County School Nursing Model

- Each of 169 schools has at least one School Nurse (Registered Nurse)
- Schools with high volumes have more than one nurse
- Leadership includes a Medical Director and Program Administrator
- 10 Nursing Supervisors
- 207 School Nurses
- 1 Nurse Educator
- 3 Administrative Staff
- 1 Vision and Hearing Specialist
- 10 Vision and Hearing Technicians
- Electronic Medical Record – Welligent™



Training and Education

- International Trauma Life Support for Pre-Hospital Care Providers.
- Emergency Care/Injury Response Program, Illinois Emergency Medical Services for Children/School Nurse Task Force guidelines.
- Health Care District, School District and Palm Beach County Disaster Preparedness Plans
- Healthcare Emergency Response Coalition



Student Health Services

Medication Visits	171,532
Non-medication Visits	534,203
TOTAL	705,835

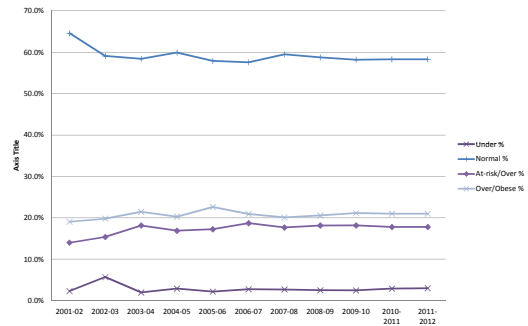
Screening Services

Screening Service	Number of students screened
Hearing	59,740
Vision	59,680
Body Mass Index	35,080
Scoliosis	10,956
TOTAL	165,456

Follow-up is time sensitive and parent/guardian response and interventions are critical to student success



BMI SCREENING, 2001-2011



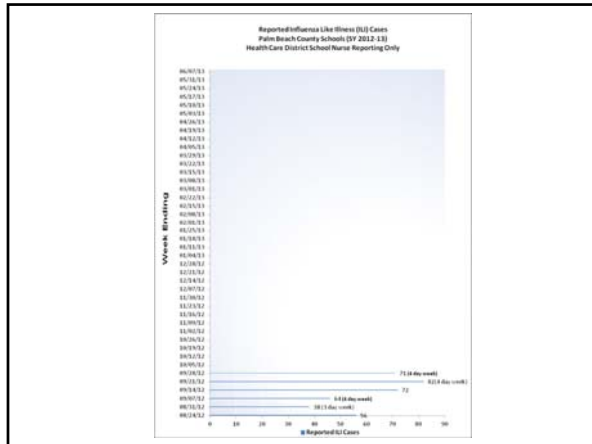
Health Condition	Total
ADHD	3,369
Allergies – mild	8,313
Allergies – severe	1,496
Asthma	9,421
Bleeding Disorder	188
Cancer	86
Cardiac Conditions	629
Cystic Fibrosis	32
Diabetes	379
Epilepsy	779
Kidney Disorders	189
Psychiatric Conditions	550
Sickle Cell Disease	172
Autism Spectrum Disorder	435
Migraines	190
GI disorders	217
TOTAL	26,445

15% of student population has an identifiable health condition

Syndromic Surveillance in Schools

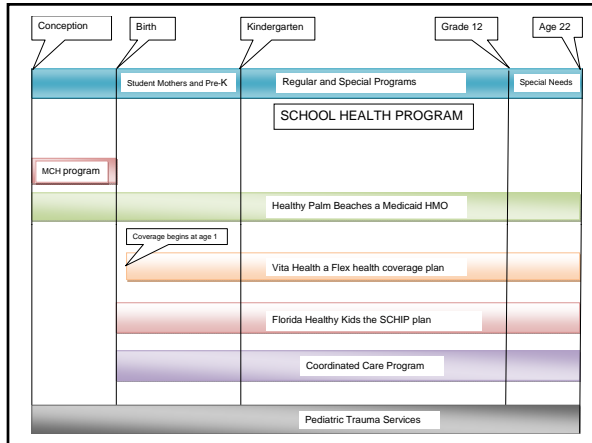
- In 2011-2012, school nurses identified 3,964 students with influenza-like illness (ILI)
- In the first 4 weeks of the current school year, 212 students have been identified with similar symptoms compared to 228 during the same time period last school year.





Integration of School Health program into the system

- Collaboration with the School District
 - School level
 - System level
- Wellness initiatives
- Liaison with social service agencies
- Referral for health coverage



How is the program funded?

School District	\$ 2,631,000
Health Care District	\$ 12,035,946
TOTAL	\$ 14,666,946

2012-2013 budget

