

Routinizing HIV and HCV Testing Using an Innovative, Scalable Dual Testing Model

Catelyn Coyle MPH MEd, Helena Kwakwa MD MPH

Dual HIV and HCV Testing Model:

- Routine HIV and HCV testing
 - Medical Assistant initiated opt-out testing
- Laboratory-based reflexive testing
 - 4th generation HIV testing
 - HCV antibody screen with reflex to HCV RNA, quantitative, by PCR
- EMR modifications
 - Prompt testing and linkage services
 - Project progress and patient tracking through continuum of care
 - Report to funders
 - Templates to collect discrete data and organize HCV and HIV test results
 - Facilitate payment for HCV and HIV tests performed on uninsured patients
 - Competitive commercial laboratory pricing for uninsured HCV and HIV tests
 - Separate account to perform tests on uninsured patients with Quest Diagnostics added to EMR
 - Invoice with HCV and HIV tests sent to project manager and paid with grant funding
- Testing Eligibility
 - HIV Testing
 - 13 years or older annually tested
 - Additional testing if reported risk factor or opt-in
 - HCV Testing
 - 18 years or older
 - Subsequent testing risk-based testing
 - Drug use
 - Housing changes
 - Tattoo/piercing from unlicensed locations

Routinizing HIV and HCV Testing Using an Innovative, Scalable Dual Testing Model

Catelyn Coyle MPH MEd, Helena Kwakwa MD MPH

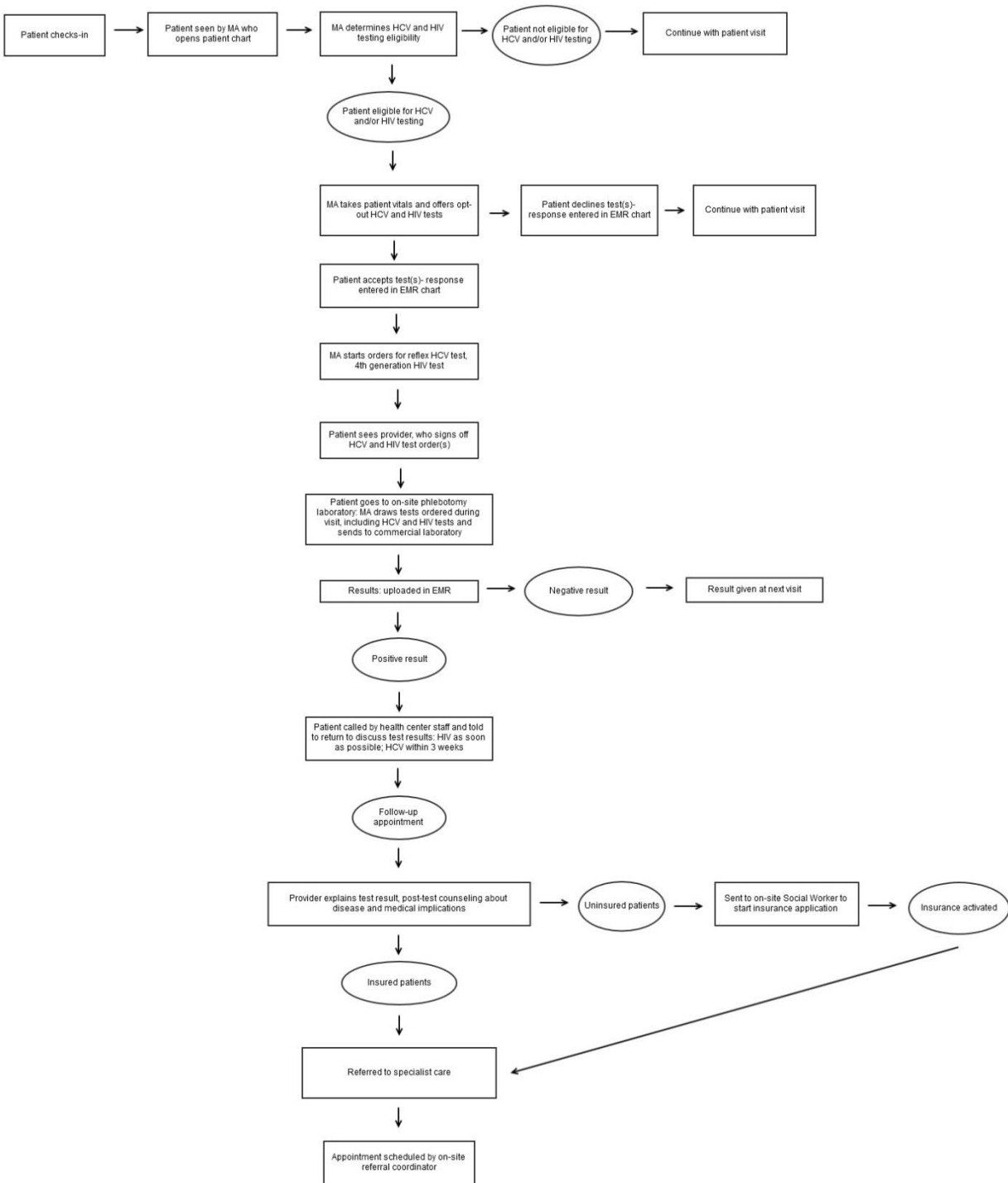


Figure from Coyle C, Kwakwa H. Routine Dual HCV and HIV Testing: Seroprevalence and Linkage to Care in Four Community Health Centers in Philadelphia, PA (*In Submission*)