



Coming Together to Improve the Health of Our Communities: Opportunities for Collaboration Between the Clinical Care System and Local Public Health Departments

Virginia Huang Richman, PhD MPH
Interim Director, Office of Planning, Evaluation and Development
Los Angeles County Department of Public Health





Presenter Disclosure

Virginia Huang Richman, PhD MPH

The following personal financial relationships with commercial interests relevant to this presentation existed during the past 12 months:

No relationships to disclose



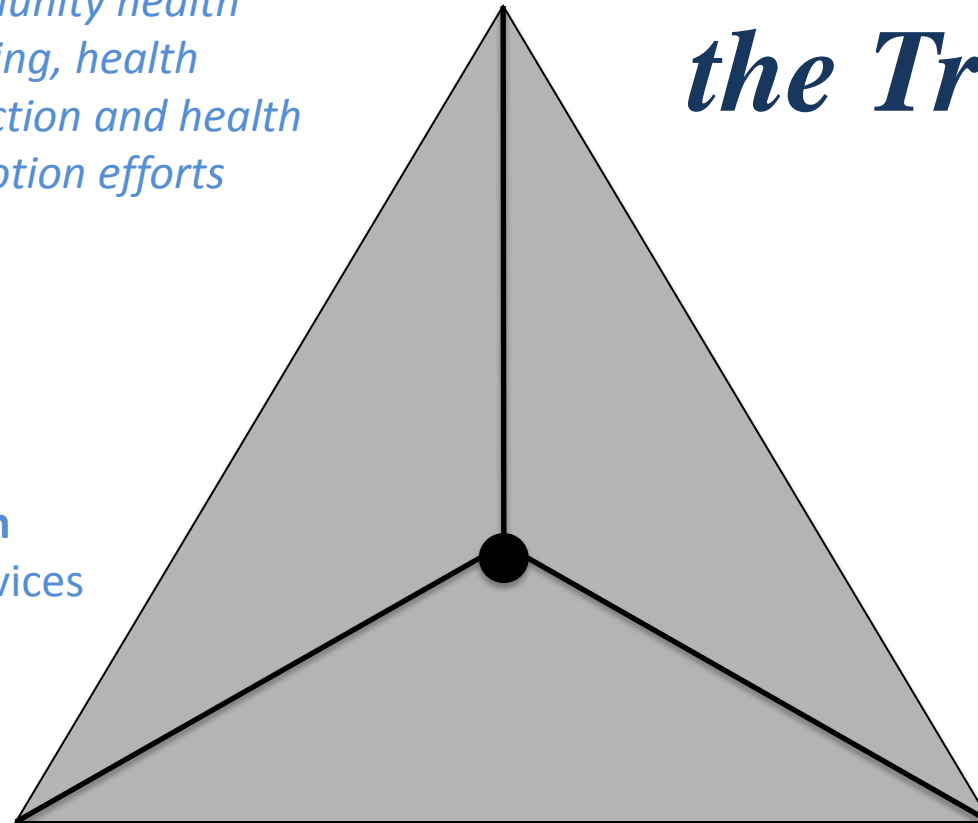
Introduction

- Definitions: Local Public Health Department vs. Local Health Department vs. local public health
- What do we mean by “population health”? Examples of ways local public health work on “population health”.
- Challenges and opportunities for collaboration and integration.

**Focus of Local Govt.
Public Health**
*Community health
planning, health
protection and health
promotion efforts*

**Population
Health**

Achieving the Triple Aim

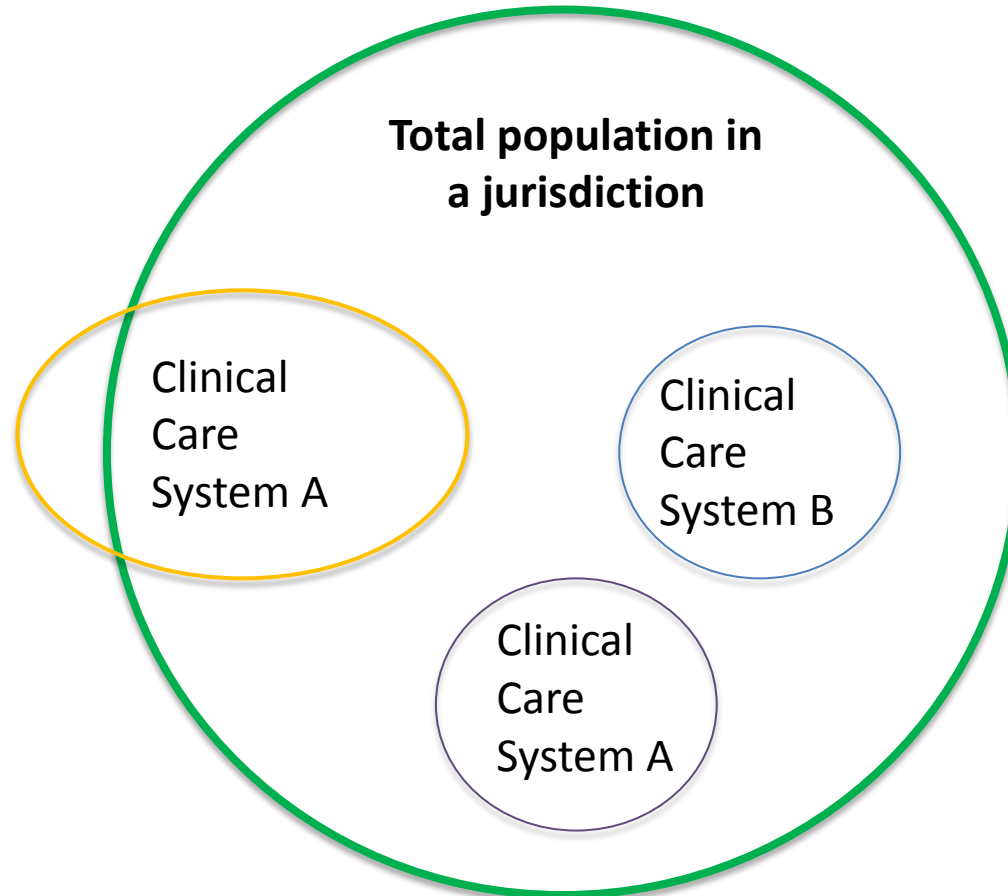


Clinical care system
Individual level services
(both public and
private)

**Experience
of Care**

**Per Capita
Cost**

***“Population Health”* from the Local Public Health Perspective**



Many systems to navigate:

- Publicly-run clinical care system
- Large health plans
- Private provider groups
- Community health centers
- Behavioral health services

Adapted from National Quality Forum. “An Environmental Scan of Integrated Approaches for Defining and Measuring Total Population Health” June, 2012.

http://www.qualityforum.org/Publications/2012/06/An_Environmental_Scan_of_Integrated_Approaches_for_Defining_and_Measuring_Total_Population_Health.aspx

Broad Conceptualization of a “Healthy Community”

What is a Healthy Community?

A Healthy Community provides for the following through all stages of life:

MEETS BASIC NEEDS OF ALL

- Safe, sustainable, accessible, and affordable transportation options
- Affordable, accessible and nutritious foods, and safe drinkable water
- Affordable, high quality, socially integrated, and location-efficient housing
- Affordable, accessible and high quality health care
- Complete and livable communities including quality schools, parks and recreational facilities, child care, libraries, financial services and other daily needs
- Access to affordable and safe opportunities for physical activity
- Able to adapt to changing environments, resilient, and prepared for emergencies
- Opportunities for engagement with arts, music and culture

QUALITY AND SUSTAINABILITY OF ENVIRONMENT

- Clean air, soil and water, and environments free of excessive noise
- Tobacco- and smoke-free
- Green and open spaces, including healthy tree canopy and agricultural lands
- Minimized toxics, green house gas emissions, and waste
- Affordable and sustainable energy use
- Aesthetically pleasing

ADEQUATE LEVELS OF ECONOMIC AND SOCIAL DEVELOPMENT

- Living wage, safe and healthy job opportunities for all, and a thriving economy
- Support for healthy development of children and adolescents
- Opportunities for high quality and accessible education

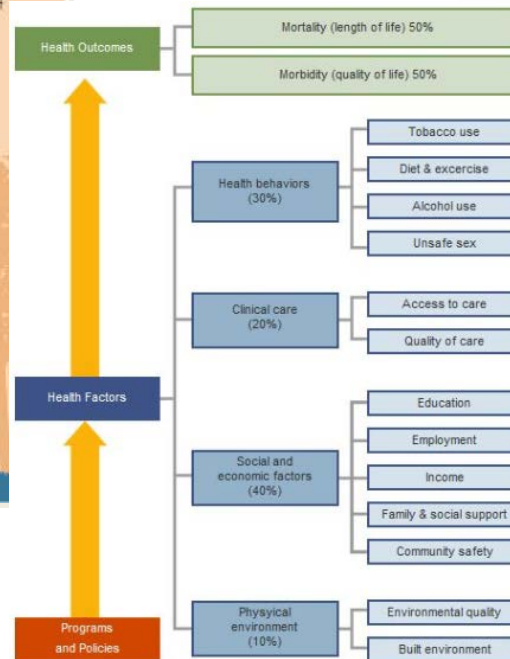
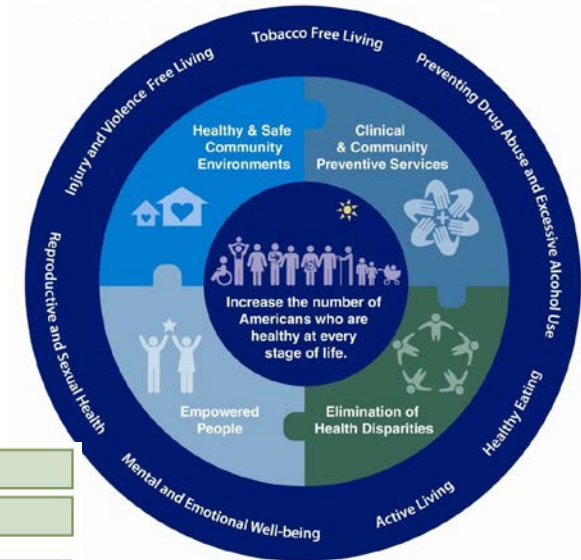
HEALTH AND SOCIAL EQUITY

SOCIAL RELATIONSHIPS THAT ARE SUPPORTIVE AND RESPECTFUL

- Robust social and civic engagement
- Socially cohesive and supportive relationships, families, homes and neighborhoods
- Safe communities, free of crime and violence



National Prevention Strategy

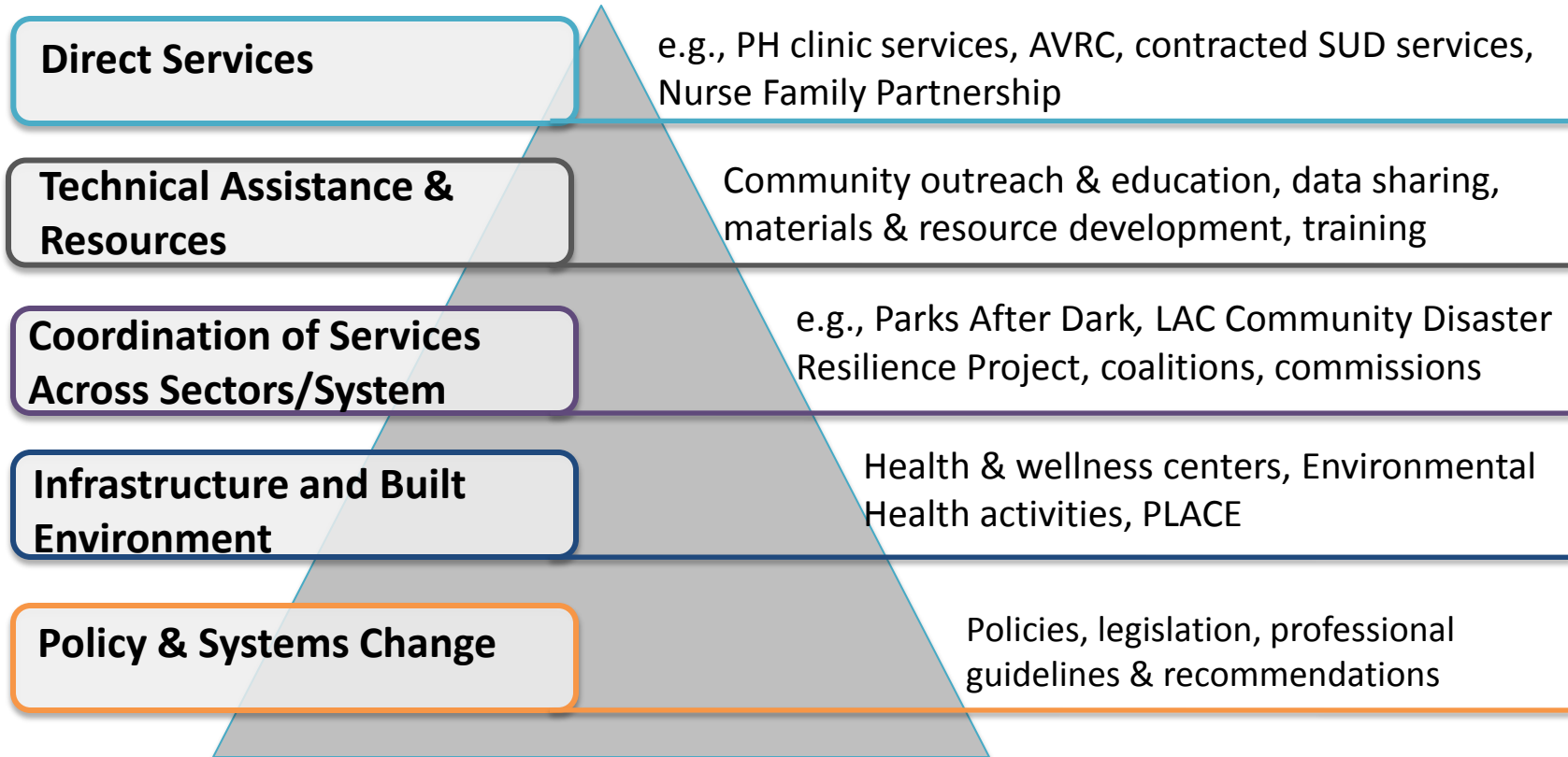


County Health Rankings

Source: California Health in All Policies Task Force. Health in All Policies Task Force Report to the Strategic Growth Council.



Local Public Health Community Engagement Activities



4 Area Health Offices (Community Health Services)

- Based in Public Health Clinics- Area Health Officers and community liaison staff (PHNs and Health Educators)
- Liaison to cities and CBOs
- Participate in Hospital Community Benefits assessments and planning
- Support DPH program initiatives
- Building community health planning coalitions in SPA 3,4,7,& 8



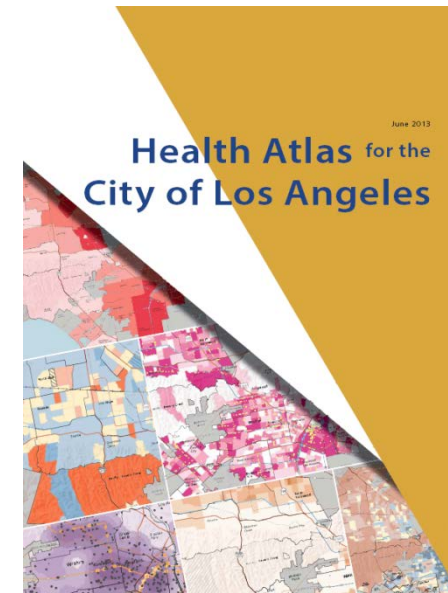
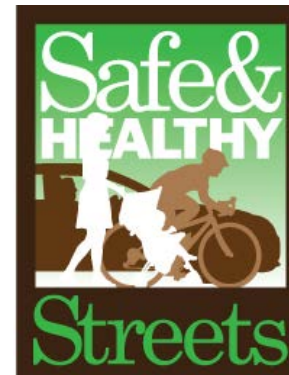
Examples of AHO Work in Communities

- Breastfeeding initiatives
- Emergency Preparedness Activities
- Activate Whittier, Lancaster
- TCE's Building Healthy Communities
- Other city-wide initiatives, i.e. Healthy San Fernando, Healthy Los Nietos

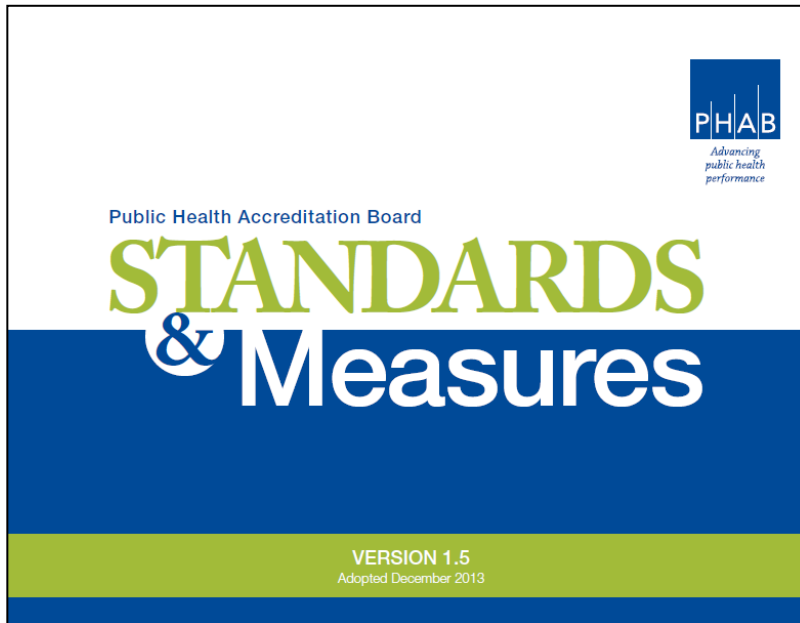


Community Planning Efforts in DPH Programs

- EPRP- Los Angeles County
Community Disaster Resilience
Project
- PLACE
 - Healthy Design Workgroup
 - Working with cities in health
Planning
- County Toxic Threat Strike Team



Community Health Improvement Planning in Public Health Accreditation



Similarities to CHNAs...

- Community Health Assessment (CHA)
- Community Health Improvement Plan (CHIP)
- Cross-sector community input

...with some key differences

- 3-year cycle vs. 5 year cycle
- Total population
- Strategic plan for jurisdiction, not local public health department

Opportunities for Collaboration: Data

Assets

- LHDs have in-house epidemiologic and demographic expertise, growing GIS and HIA capacity
- LHDs have data from population surveys, vital statistics, disease surveillance
- Clinical care systems sometimes have proprietary data (smaller region) and data from EHRs

Opportunities

- Joining forces on data collection and selecting key indicators, benchmarks for community health planning
- Analysis /Evaluation of community benefit interventions
- Applying for PCORI research grants



Opportunities for Collaboration: Community Health Planning

Assets

- LHDs convene other departments and contracted safety-net community providers.
- Community benefit programs experience with development, connection to other CBs, private sector (providers and business)
- LHDs bring broad population health and social determinants perspective, work on the policy level

Opportunities

- Collaborating on community engagement to ensure cross-sector participation
- Jointly sponsor online platforms for community health planning
- Resources for meetings
- Common interest in evidence-based and promising interventions



Promoting *Integration* of Clinical Care System and Local Public Health Accreditation

Challenges

- EHR and billing for non-clinical interventions from LHDs
- Funding streams for episodes of care in population health work

Opportunities

- Centers for Medicare and Medicaid Innovation Models (CMMI)
- Medi-Cal expansion of behavioral health services
 - Coordinated Care Initiative for the dual-eligible
 - Health Neighborhoods (Whole-person Care)
- CDC Community Prevention Grant Funding



Health Neighborhoods

DPH Vision: Healthy People in Healthy Communities
(LAC-wide population health)

Health Neighborhoods: to address local health disparities in five pilot neighborhoods

health neighborhoods: integration of health, MH, SUD and PH services via regional service delivery networks



Thank you!

Virginia Huang Richman, PhD MPH
vrichman@ph.lacounty.gov