

CDC's Quarantine Branch: Building Partnerships and Enhancing Workforce Development



Gabrielle Benenson, MPH

Division of Global Migration & Quarantine

**National Center for the Preparedness, Detection, and
Control of Infectious Diseases Centers for Disease
Control and Prevention (CDC)**



SAFER · HEALTHIER · PEOPLE™

Quarantine and Border Health Services Branch Mission



To protect the health of the public from communicable diseases through science, partnerships, and response at U.S. ports



“The war against infectious diseases has been won...”

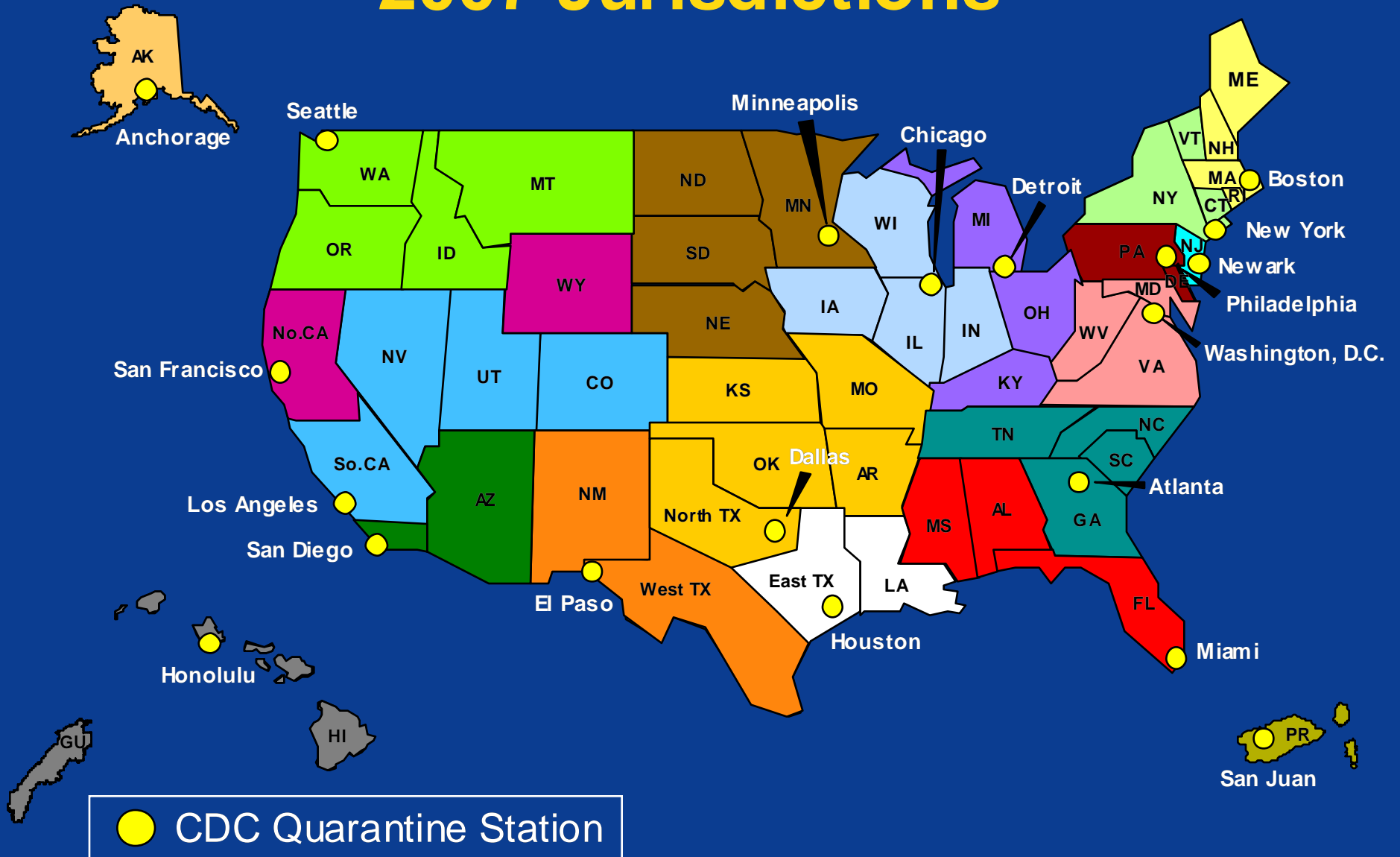
**— William H. Stewart
U.S. Surgeon General, 1969**



SAFER • HEALTHIER • PEOPLE™

Copyright 2007, Gabrielle Benenson, GBenenson@cdc.gov

CDC Quarantine Stations 2007 Jurisdictions



Federal Quarantine Authority

- Public Health Service Act, section 361
(42 US Code § 264)

*U.S. Secretary of Health and Human Services authorized to take measures to **prevent the entry and spread of communicable diseases from foreign countries into the United States and between states****



* Derived from Commerce Clause of U.S. Constitution

Executive Order 13295

Revised List of Quarantinable Communicable Diseases

- Cholera; diphtheria; infectious tuberculosis; plague; smallpox; yellow fever; and viral hemorrhagic fevers (Lassa, Marburg, Ebola, Crimean-Congo, South American, and others not yet isolated or named)
- Severe acute respiratory syndrome (SARS)
- Influenza caused by novel or reemergent influenza viruses that are causing, or have the potential to cause, a pandemic



President George W. Bush
April 1, 2005



CDC Quarantine Stations' Functions

- Respond to reports of illnesses on maritime vessels (cruise, cargo), airplanes, and at land crossings
- Inspect animal and human products posing threat to human health
- Distribute life-saving immunobiologics and investigational drugs
- Plan and prepare for emergency response



CDC Quarantine Stations' Functions

- Monitor health, and collect, distribute, and manage medical information of new immigrants, refugees, and parolees
- Inspect cargo and hand-carried items for potential vectors of human infectious diseases
- Provide travelers with essential health information
- Respond to mass migration emergencies
- Form partnerships for disease surveillance and control

Travel Health Alert Notice: Measles

To the traveler: You may have been exposed to measles while traveling. Measles is a highly contagious illness transmitted through the air when infected people cough or sneeze.

Symptoms: If you have a fever AND a red, raised rash that usually starts on the face and spreads to the arms, legs, and body; a cough; runny nose; or red eyes —

- Contact your doctor right away; tell your doctor that you were exposed to measles during your trip and arrange to be seen.
- Show your doctor this card.
- Limit your contact with other people.
- Do not travel, unless you are traveling locally for medical care.
- Cover your nose and mouth with a tissue when you cough or sneeze.
- Wash your hands often, especially after coughing or sneezing.



You are most likely protected if you

- have had measles,
- were born in the United States before 1957, or
- have had 2 doses of measles or MMR vaccine.

If not protected, people at higher risk for serious infection are

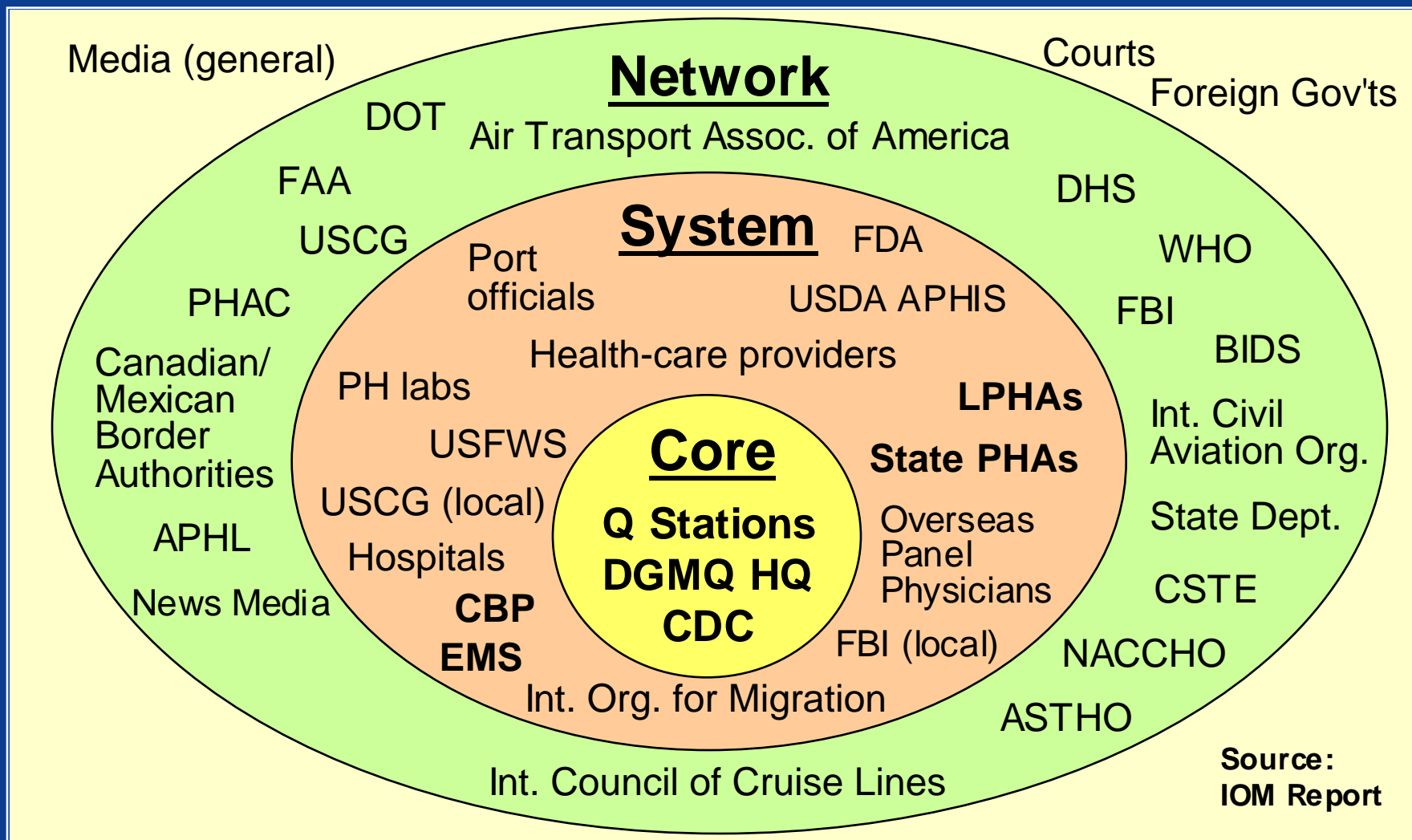
- pregnant women,
- persons who have a health condition or medical treatment that affects their immune system.

See "To the doctor" on the other side...



SAFER • HEALTHIER • PEOPLE™

The Quarantine System



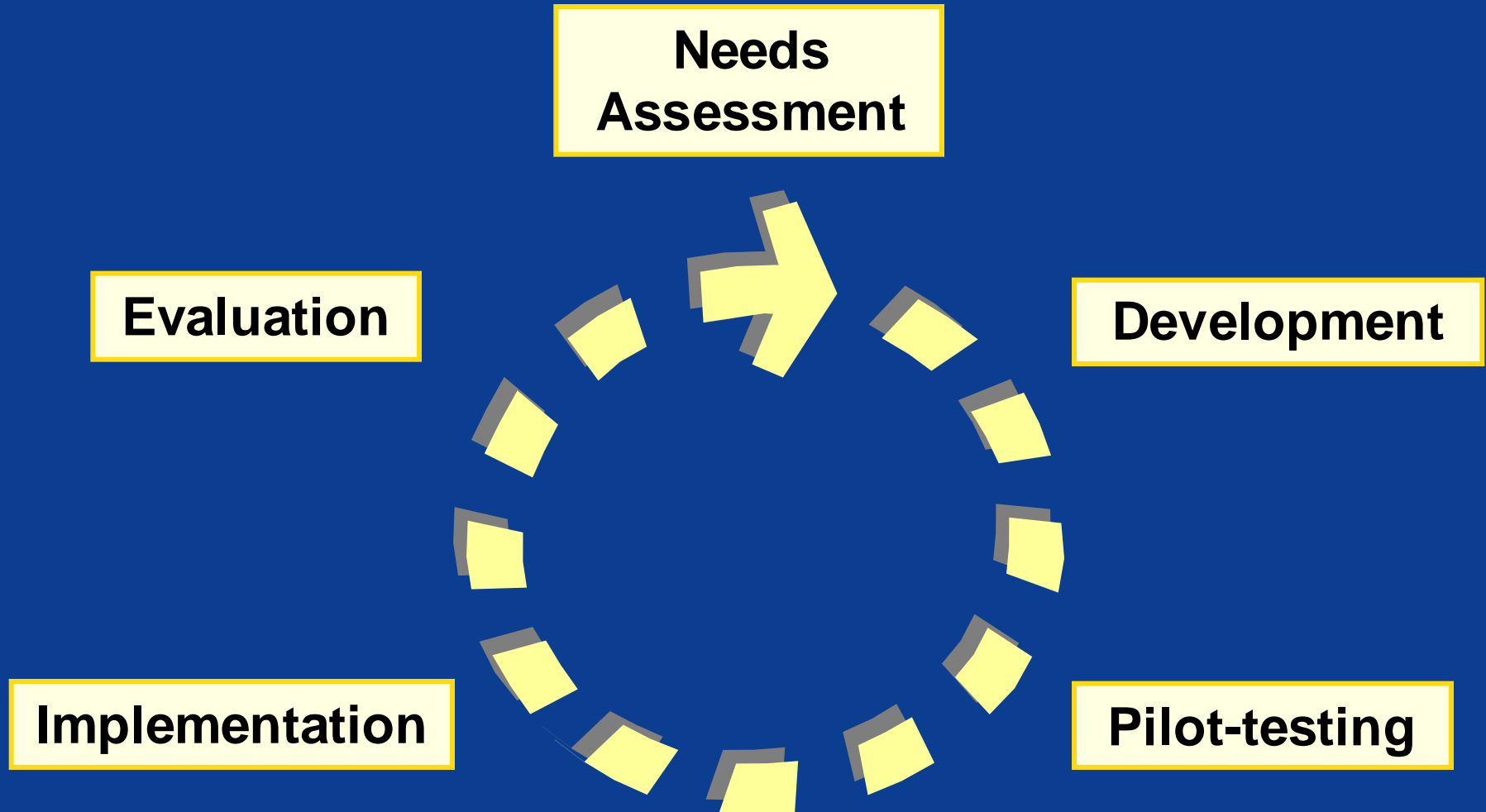
Relationships among the Quarantine Core System and Network for U.S. Ports of Entry

Quarantine Training & Education Team (QTET)

Provides training,
education, and
communication
support and
expertise for the
Quarantine & Border
Health Services
Branch staff and
partners



Overview of Systematic Approach to Health Education



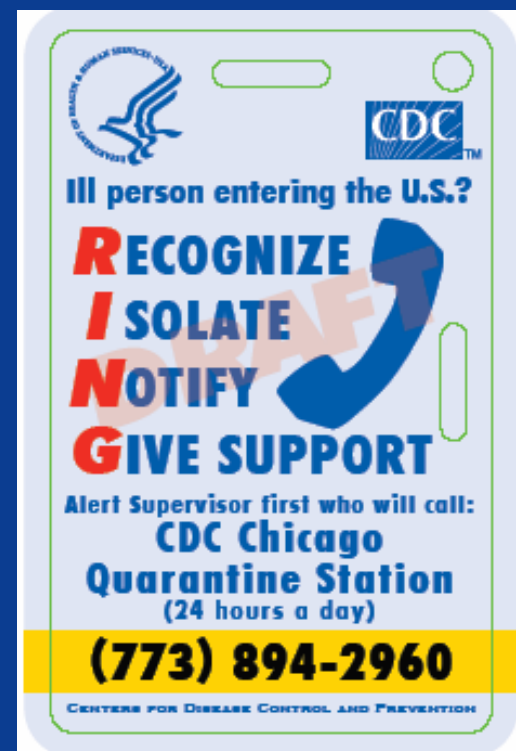
Goals of Needs Assessment and Formative Evaluation Activities

- Build and strengthen relationships with key partners at ports of entry
- Develop appropriate training and education content and communication messages
- Provide content through preferred and effective formats




Customs and Border Protection

- Focus groups and interviews with CBP instructors and officers about training and job aids
- Evaluation of basic training course
- Roundtable discussions and Web-based survey planned



Airlines

- Focus group with American Airlines
- Interviews and roundtable discussions planned



Flight Crew Public Health Alert
Measles

Overview Germany and other countries participating in the World Cup are experiencing measles outbreaks. Most U.S. travelers are already immune to measles. Still, you may encounter persons with measles.

Measles Measles is a highly contagious illness transmitted through the air when infected people cough or sneeze. For more information, visit the following CDC website:
<http://www.cdc.gov/nip/diseases/measles>

If a passenger exhibits or reports a fever AND one or more of the following symptoms of measles, follow the guidance below.

- a red, raised rash that starts on the face and moves to arms, legs, and body
- cough
- runny nose
- red eyes

What to do with an ill passenger

- Offer a surgical mask to the passenger.
- Move the passenger as far away from others as possible.
- Ask the passenger to cover his/her mouth with a tissue when coughing or sneezing.
- Ask the passenger to wash his/her hands with soap and water (or an alcohol-based hand gel) especially after coughing or sneezing.


Reporting procedures Federal regulations [42 CFR Part 71.21(b)] require captains of aircraft destined for a U.S. airport to report any death or serious illness among passengers.

1. Immediately inform the captain of the illness.
2. The captain will call the Operational Control Center (OCC).
3. The OCC will contact the nearest CDC Quarantine Station, Emergency Medical Service (EMS), and the airline's medical office or passenger health services.
4. If OCC cannot contact the nearest Quarantine Station, OCC will contact the CDC Quarantine Duty Officer at 866-694-4867.
5. After the plane lands, CDC Quarantine Station staff and/or EMS may board the plane and evaluate the ill passenger. At this time, CDC may also collect passenger contact information.

Staff info As a member of the flight crew, you should be aware of your own immunization status. You are most likely protected from measles if you

- were born in the United States before 1957,
- have had measles, or
- have had 2 doses of measles or MMR vaccine.

If you are uncertain of your immune status and think you were exposed to measles, consult your health-care provider.



DEPARTMENT OF HEALTH AND HUMAN SERVICES
CENTERS FOR DISEASE CONTROL AND PREVENTION

SAFER • HEALTHIER • PEOPLE™

EMS

- Roundtable discussions at EMS & CDC Collaborative Meeting
- Roundtable discussions at Aircraft Rescue Firefighting Working Group Annual Meeting
- Interviews with training coordinators planned



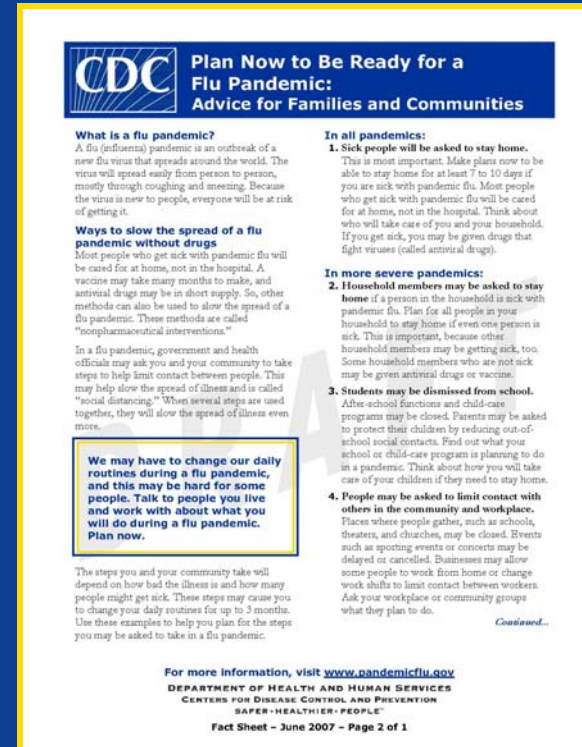
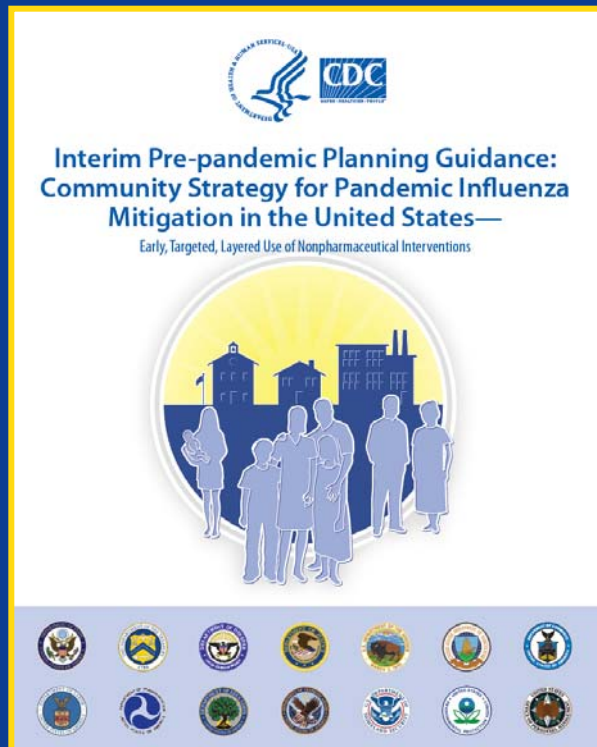
Travelers and General Public

- Focus group on Travel Health Alert Notices (additional planned)
- Message testing for quarantine and pandemic influenza messages



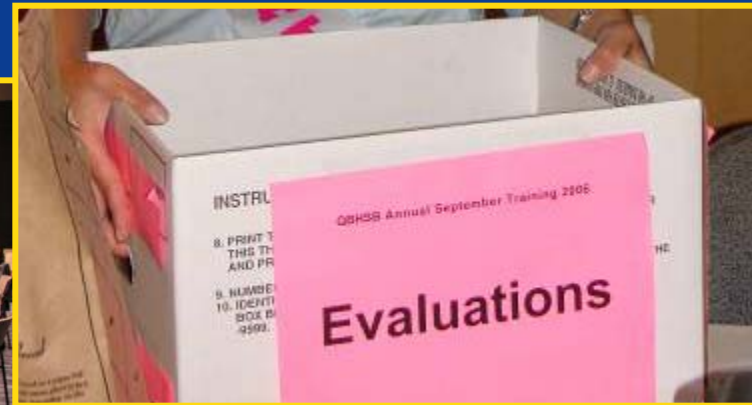
Public Health Practitioners

- Review of fact sheets on community strategies for pandemic flu mitigation
- Focus groups with physicians planned



Quarantine Station Staff

- Evaluation and planning committee for annual conference
- Web-based survey on training topics, formats, frequency, and location



Questions?



SAFER · HEALTHIER · PEOPLE™

Copyright 2007, Gabrielle Benenson, GBenenson@cdc.gov