

PUBLIC HEALTH: Increasing Minority Human Capital in Public Health Practice and Research to Reduce Health Disparities

Sandra Glover, MBA, PhD
Associate Dean for Health Disparities
and Social Justice
Director - IPEHD /
USC-Claflin EXPORT Center

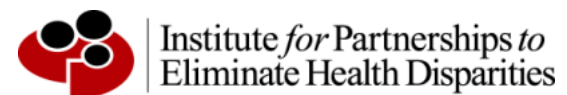
APHA 135TH Annual Meeting and Expo
November 3-7 2007



UNIVERSITY OF SOUTH CAROLINA

Agenda

- Overview of Learning Objectives
- Introduction to Institute for Partnerships to Eliminate Health Disparities (IPEHD)
- Initiative: W.K. Kellogg Program
- Initiative: The USC-Claflin EXPORT Center
- Sources of Support for Pipeline Sustainability
- Q&A

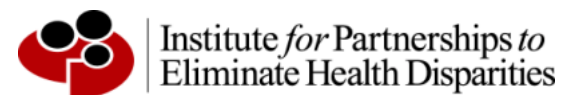


THE ISSUE (NEED)

Article: Creating and Maintaining a Sustainable Workforce

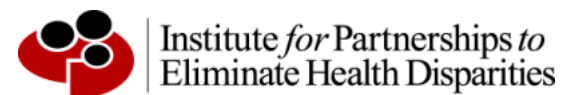
“There has been increasing concerns about the health of *the pipeline*- the new generation of investigators that will make the discoveries of the future.”

*-Norka Ruiz Bravo, Ph.D.
Director, Office of Extramural Research and NIH
Deputy Director for Extramural Research*



SESSION LEARNING OBJECTIVES:

- Understand the need for increasing minority professionals in public health practice and research in order to reduce health disparities.
- Understand an innovative human capital approach to develop minority health researchers and public health professionals and advocates in the community to address health disparities.
- Understand the process of linking community based participatory research approaches with a historically black college and a major flagship university to develop an organic bottom-up approach to eliminate health disparities.
- Understand the potential for collaborative linkages between a major research university and historically black college to address health disparities.



What is IPEHD?

- A partnership between....
 - A large, research-oriented institution of higher learning
 - Historically Black Colleges and Universities (HBCU's)
 - 1890 Land Grant Network
 - Statewide public health agencies
 - Other community organizations

Our mission:

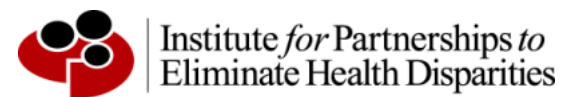
To eliminate health disparities through academic, community and other strategic partnerships in South Carolina and beyond.



Institute for Partnerships to
Eliminate Health Disparities

GOALS AND OBJECTIVES

- The main goal of IPEHD is to reduce and eliminate health disparities in minority populations
- The objectives include:
 - Increasing the number of minority professors who are knowledgeable in the field of public health
 - Encouraging minority students to consider careers in public health
 - Increasing statewide research on health disparities
 - Supporting organizations committed to reducing and eliminating health disparities



CURRENT PROGRAMS / ACTIVITIES

W. K. Kellogg Public Health Fellowship and Development Program



SC DHEC



M.A.T.C.H (Mobilizing Against Threats to Community Health)

MID-CAROLINA AHEC

CLAFLIN UNIVERSITY

USC- Claflin EXPORT Center



ALLEN UNIVERSITY

PALMETTO HEALTH

Minority HIV/AIDS Council



RICHLAND SCHOOL DISTRICT ONE

Victory Tabernacle Church

MINORITY AFFAIRS COMMISSION



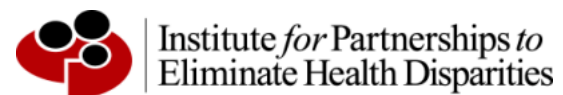
1890 Land Grant Network



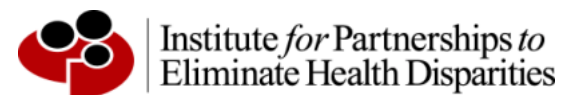
Institute for Partnerships to Eliminate Health Disparities

PARTNERSHIPS TO DEVELOP PUBLIC HEALTH PROFESSIONALS

- University of South Carolina's Institute for Partnerships to Eliminate Health Disparities
- USC Arnold School of Public Health
- SC Historically Black Colleges and Universities (HBCUs)
- SC DHEC



OUR FOUR CORNERSTONES:



BUILDING THE PIPELINE

STUDENT DEVELOPMENT

High School, Undergraduate and Graduate Students are introduced to:

- Public Health Professions/Careers
- Health Disparities Research
- Career Development Processes
- Academic Preparation for Graduate/Professional School
- Opportunities for Fellowships, Graduate Assistantships, Internships with Researchers



Institute for Partnerships to
Eliminate Health Disparities

INITIATIVE:



- African American Public Health Fellowship and Development Program to Address Health Disparities
- Builds a synergistic research network to increase interactive health disparities research
- Increase the number of African-American students/professionals in health disparities research activities
- Promote minority leadership positions in state/community organizations at the front line

Multi-Tiered Fellowship Program

- Tier One-High School
 - Accomplishments
 - 462 High School Student Participants
 - Summer Enrichment Program
 - Saturday Academy



Multi-Tiered Fellowship Program

- Tier Two-Undergraduate
 - Accomplishments
 - Established a process for distributing Kellogg Grant funds to each HBCU campus
 - Awarded 67 undergraduate fellowships



Institute for Partnerships to
Eliminate Health Disparities

Multi-Tiered Fellowship Program

- Tier Two-Undergraduate
 - Accomplishments
 - Established a process for distributing Kellogg Grant funds to each HBCU campus
 - Awarded 67 undergraduate fellowships



Institute for Partnerships to
Eliminate Health Disparities

Multi-Tiered Fellowship Program

- Established a process for distributing Kellogg Grant funds to each HBCU campus
- Awarded 67 undergraduate fellowships
- Minority Health Month Symposium and Luncheon



Institute for Partnerships to
Eliminate Health Disparities

Multi-Tiered Fellowship Program

- Established a process for distributing Kellogg Grant funds to each HBCU campus
- Awarded 67 undergraduate fellowships
- Minority Health Month Symposium and Luncheon
- Two-week summer institute



Institute for Partnerships to
Eliminate Health Disparities

Multi-Tiered Fellowship Program

Tier 3-Graduate Studies

Eight Master's Level Students

Four Doctoral Students



Institute for Partnerships to
Eliminate Health Disparities



EXPORT

Center of **EX**cellence in **P**artnerships, **C**ommunity **O**utreach,
Research on Health Disparities, and **T**raining
University of South Carolina - Claflin University

INITIATIVE:

EXPORT Center of EXcellence in Partnerships, Community Outreach, Research on Health Disparities and Training

- Funded by the National Center for Minority Health and Health Disparities (NCMHD) of the National Institutes of Health (NIH)



*Institute for Partnerships to
Eliminate Health Disparities*



PROGRAM OBJECTIVES

- (1) Advance the science directed towards reducing, eliminating, or preventing health disparities
- (2) Discover new interventions or expand utilization/adaptation of existing evidence-based interventions
- (3) Increase the number of professionals from minority and underserved populations trained in biomedical and behavioral research by building capacity at minority serving institutions
- (4) Conduct research on health disparities
- (5) Increase public trust and dissemination and utilization of scientific and health information relevant to health disparity populations



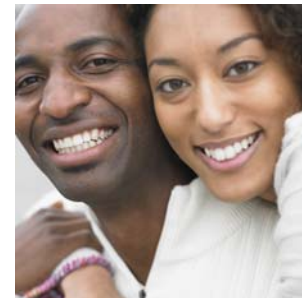
Institute for Partnerships to
Eliminate Health Disparities

TRANSLATIONAL RESEARCH

- The USC-Claflin EXPORT Center recognizes and is dedicated to moving theoretical research to practice
- Community partnership and involvement throughout the program is essential in fostering a healthier SC
- EXPORT serves as a bridge by using its research results to reduce health disparities in rural populations



EXPORT



Institute for Partnerships to
Eliminate Health Disparities

PROJECT EXPORT COMPONENTS

Administrative Core

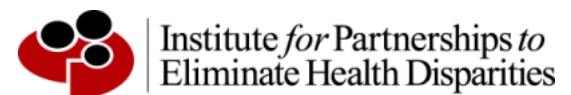
Research Core and
Research, Education and
Training Core (RET) Core
combined

Community Partnerships and
Outreach (CPOC) Core





***The USC-Claflin EXPORT CENTER
Molecular Virology Laboratory***



MOLECULAR VIROLOGY LAB



Institute for Partnerships to
Eliminate Health Disparities

MOLECULAR VIROLOGY LAB

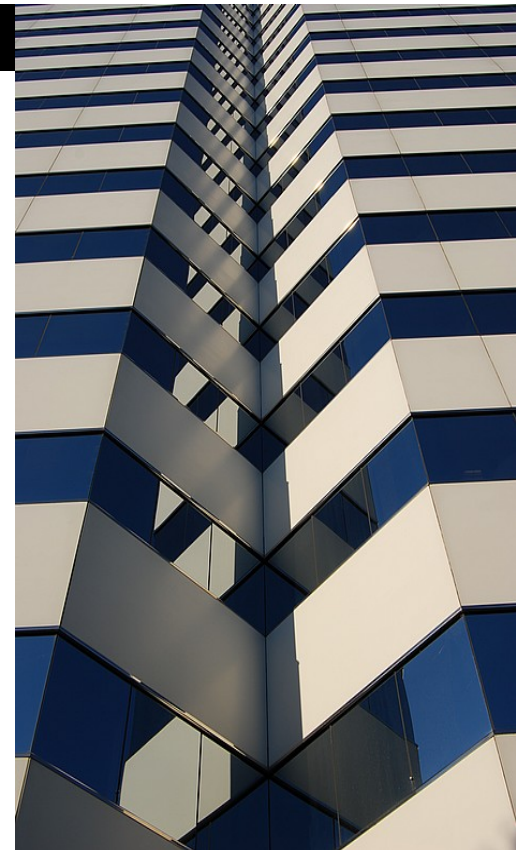


Institute for Partnerships to
Eliminate Health Disparities

SUSTAINING THE PIPELINE

FOUR+1 DEGREE PROGRAM RESEARCH NETWORK

- Research development training activities for HBCU faculty
- Establishment of Pilot Studies
 - Five pilot studies have been funded
- External Funding Opportunities
- Minority Fellowships
- Loan Repayment Programs



Institute for Partnerships to
Eliminate Health Disparities



Questions?

CONTACT INFORMATION

Sandra Glover, MBA, Ph.D., Director
Institute for Partnerships to Eliminate Health Disparities
220 Stoneridge Drive
Columbia, South Carolina 29210
803.251.6300
sglover@gwm.sc.edu

Associate Dean for Health Disparities and Social Justice
Arnold School of Public Health

Co-Principal Investigator
USC-Claflin EXPORT Center



Institute for Partnerships to
Eliminate Health Disparities